

ROMO FABRICS



The textiles and colours shown are selected by HAY. Other colours from ROMO are available subject to a specified minimum order – please contact your local sales person for more information. It is not possible to select other colours from the range of Lola textiles.

HAY

OLAVI BY HAY

ROMO FABRICS

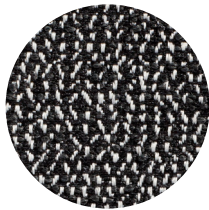
OLAVI BY HAY COLOURS



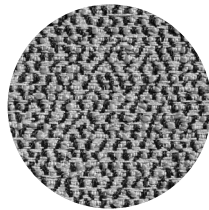
01



02



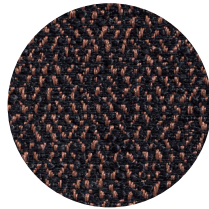
03



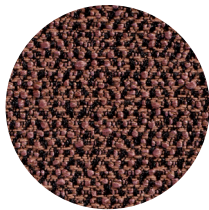
05



07



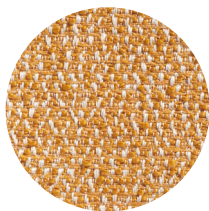
08



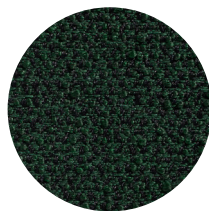
12



14



15



16

Bridging domestic and contract use, Olavi by HAY is an inviting semi-plain with a textured, irregular weave structure and a range of tantalising colours, including classic combinations and high-contrast teasers, all in a strong contemporary palette.

Collection Olavi by Hay

Composition 54% Polyester, 26% Acrylic, 20% Cotton

Width 140 cm / 55.12"

Price group 2

Martindale 70,000

Lightfastness 5

FIRE RATINGS

/ EN 1021 PART 1 (CIGARETTE) - EU

/ CAL117 - US

/ NFPA 260 - US

OPTIONAL FIRE RATINGS (WITH FR TREATMENT)

/ BS 5852 PART 1 IGN 0 AND IGN 1 (CIGARETTE AND MATCH) - UK

Note: Due to variations in computer screens, we cannot guarantee that the colours shown here are truly representative of our products.

HAY

LINARA

ROMO FABRICS

SELECTED COLOURS BY HAY



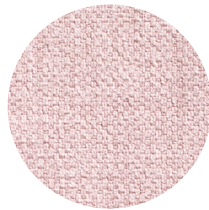
198



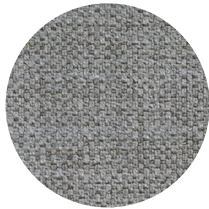
196



103



415



443



311



142



216

An exquisite cotton-linen blend, Linara has a beautiful brushed finish with an exceptionally soft, peach-skin feel that adds a luxurious quality to this versatile plain.

Collection Linara

Composition 63% Cotton, 37% Linen

Width 140 cm / 55.12"

Price group 1

Martindale 36,000

Lightfastness 5

FIRE RATINGS

/ BS 5852 PART 1 IGN 0 (CIGARETTE) - UK

/ EN1021 PART 1 UPHOLSTERY - EU

/ NFPA260 - US

/ CAL117 - US

OPTIONAL FIRE RATINGS

/ BS5852 PART 1 IGN 0 AND IGN 1 (CIGARETTE AND MATCH)

- WITH DUB BACK COATING - UK DOMESTIC

/ EN1021 PART 2 UPHOLSTERY - WITH DUB BACK COATING - EU

/ BS5852 PART 2 CRIB 5 - WITH CUB BACK COATING - UK CONTRACT*

Note: Due to variations in computer screens, we cannot guarantee that the colours shown here are truly representative of our products.

HAY

RUSKIN

ROMO FABRICS

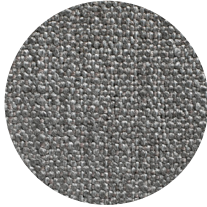
SELECTED COLOURS BY HAY



33



05



12



11

Note: Due to variations in computer screens, we cannot guarantee that the colours shown here are truly representative of our products.

Perfect for upholstery this versatile plain portrays a natural quality with an element of textural luxury. A blend of viscose, linen and wool creates a beautiful movement of colour and gives the fabric a textured appearance.

Collection Ruskin

Composition 70% Viscose, 15% Linen, 10% Wool, 5% Polyamide

Width 140 cm / 55.12"

Price group 3

Martindale 60,000

Lightfastness 5+

FIRE RATINGS

/ BS 5852 PART 1 IGN 0 (CIGARETTE) - UK

OPTIONAL FIRE RATINGS

/ BS5852 PART 1 IGN 0 AND IGN 1 (CIGARETTE AND MATCH)
- WITH DUB BACK COATING - UK DOMESTIC

HAY

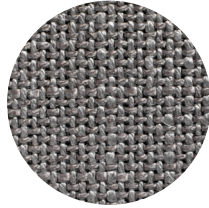
RODEN

ROMO FABRICS

SELECTED COLOURS BY HAY



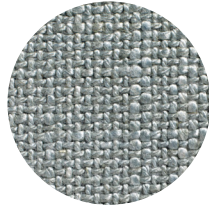
04



05



06



08

Note: Due to variations in computer screens, we cannot guarantee that the colours shown here are truly representative of our products.

A textural viscose linen with a subtle sheen and wonderful natural appearance.

Collection Alston

Composition 55% Viscose, 24% Linen, 10% Cotton, 8% Polyester, 3% Polyamide

Width 140 cm / 55.12"

Price group 3

Martindale 50,000

Lightfastness 5+

FIRE RATINGS

/ BS 5852 PART 1 IGN 0 (CIGARETTE) – UK

/ EN1021 PART 1 UPHOLSTERY – EU

/ NFPA260 – US

/ CAL117 – US

OPTIONAL FIRE RATINGS

/ BS5852 PART 1 IGN 0 AND IGN 1 (CIGARETTE AND MATCH)

- WITH DUB BACK COATING - UK DOMESTIC

/ BS5852 PART 2 CRIB 5

- WITH CUB BACK COATING - UK CONTRACT*

HAY

CARE

FABRICS

- / Vacuum the furniture regularly using the upholstery nozzle to remove dust and avoid fluff and pilling.
- / Straighten the fabric with your hands from time to time. Wrinkles in the fabric can be straightened using a steamer.
- / Soak up spilled liquids immediately with an absorbent napkin or cloth by dabbing gently towards the centre of the stain.
- / Never use concentrated detergents or bleach, ammonia, optical brighteners or soap intended for hard surfaces.
- / We do not recommend spot cleaning of individual marks and stains as this damages the fabric and causes colour loss.
- / If the stain persists, consult a specialist cleaner.

HAY