



Also in the FabLab range:



See our full range of toys and gifts at:

[www.playmonster.co.uk](http://www.playmonster.co.uk)

**PlayMonster**



Designed and manufactured by:

**PlayMonster UK Ltd.**

Artisan, Hillbottom Road, High Wycombe.

HP12 4HJ.

Please retain our address for future reference.

The FabLab® trademark is registered in the UK

to PlayMonster UK Ltd. Made in China.

Copyright ©2021 PlayMonster UK Ltd.



Instructions

Invent-A-Scent  
**Perfume**

Create **FAB**  
Perfumes Made For You





## WARNING!

For children over 8 years of age. Use under adult supervision. Not suitable for children under 3 years of age due to small parts which may represent a choking hazard.

Contains fragrances which may cause an allergic reaction.

The fragrances are not toxic, but if fragrances enter the eye, rinse immediately with plenty of cold water. Do not consume the fragrances. If consumed, drink plenty of cold water. Do not induce vomiting.

If symptoms persist, consult a doctor, and take this booklet with you.

## CAUTION!

Read these instructions before use, follow them and keep them for reference.

Keep young children and animals away from the experimental area. Store this set in its original packaging out of reach of children under 8 years of age. Clean all equipment after use. Make sure that all containers are fully closed and properly stored after use. Ensure that empty containers are disposed of properly

(in household waste or plastics recycling). Wash hands after carrying out the activities. Do not use equipment which has not been supplied with this set or recommended in the instructions for use.

Do not eat or drink in the area in which you are carrying out the activities. Do not allow chemicals to come into contact with the eyes or mouth.

This kit contains genuine fragrances. These can stain wood surfaces and may damage certain plastics and painted surfaces, so please make sure that activities are carried out on a suitable surface, such as a kitchen sink drainer, or on kitchen work surfaces protected by several layers of newspaper (to absorb any spills). Always thoroughly dry the fragrance bottles, pipettes, and work area with kitchen paper after use.

Contains: Aqua 7732-18-5; Parfum; Glycerin 56-81-5; Potassium Sorbate 590-00-1; Polysorbate 20 9005-64-5.

## Allergen testing

We recommend that you test each of the fragrances on your skin before use. Apply a droplet of fragrance to the skin of the inner forearm and leave for 30 minutes. If there is no visible redness, you are unlikely to be sensitive to any of the ingredients.

If you are particularly susceptible to allergic reactions, the above test method can be used, but cover the test area with a sticky plaster and leave for 24 hours before washing off.

Once opened or mixed, fragrances must be used within 6 months.

Allergens over 0.01%				
Allergen	CAS Number	Citrus	Fruity	Floral
Benzyl Alcohol	100-51-6			•
Citronellol	106-22-9		•	
Hexyl Cinnamic Aldehyde	101-86-0		•	
Limonene	5989-27-5	•	•	
Linalool	13906-04-4		•	

## Contents

- 5 x Fragrances (Musk, Floral, Citrus, Fresh, & Fruity)
- 5 x Pipettes
- Perfume Tester Strips
- 4 x Spray Gift Bottles (Pink, Blue, Purple & Yellow)
- 1 x Sheet Sticker Labels
- 1 x Pair of Laboratory Gloves

## Instructions

# Invent-A-Scent Perfume



## Introduction

The art of creating and blending perfumes goes back thousands of years. Archaeologists have discovered Perfume bottles in Cyprus that are over 4000 years old! Perfumes are therefore some of the earliest cosmetic products ever used.

Invent-a-Scent Perfume contains a variety of different fragrances allowing you to blend unique perfumes to match an individual's personality, likes and interests. Either fun to wear yourself or give as gifts to friends and family.

**Note:** For the purposes of this kit we refer to a 'fragrance' as being an individual scent or ingredient (e.g. the Musk, Floral, Citrus, Fresh, and Fruity fragrances in the kit) and 'perfume' as being the result of combining (or blending) some of these different fragrances together.

## Did you know?

A perfume on one person can smell entirely different when worn by another person. This is because of our individual body chemistry and how the oils react with it. Perfume can also change over time. When trying out a perfume, whether you make it yourself or are testing it in a shop, wait for a few minutes to see how it reacts with your skin; it may smell differently to when you first put it on.

## Storage

Fragrances are composed of delicate chemicals which can be damaged by exposure to light and heat, so in order to keep perfumes at their best, they should always be stored in a cool, dark, and dry place. A bathroom window ledge is therefore not a good place to store your favourite perfumes!

## Perfume Blending

Professional perfume blenders are known as 'Noses' because of their highly developed sense of smell. It takes over 7 years to train as a 'Nose' but the rewards can be excellent as talented noses are in high demand and can command very good salaries.

Expensive perfumes contain a complex blend of different fragrances and may have 50 or more ingredients! The key to successful perfume blending lies in what is called the 'notes'...

There are 3 notes to most perfumes; **Base**, **Heart** (or mid) and **Top** notes. Within the kit, you have at least one fragrance of each note.

Base Note	Heart Note	Top Note
Musk	Floral	Citrus Fresh Fruity

- **Base notes** give the perfume body and helps the perfume to last. Base notes should be used sparingly as they contain a higher concentration and can often dominate a fragrance.
- **Heart notes** mixes with the base notes to give the perfume its lasting odour.
- **Top notes** are generally the first fragrance in a perfume you will notice. However, they will often evaporate after 15 to 30 minutes.

Top notes are first noticeable upon application. These are typically light and fruity. Their aim is to lure you in and help persuade you to purchase. Most people do not realise that perfumes change over time and that they should allow the perfume to settle on their skin and see how the oils react.

You can mix and match the various notes in order to produce your very own perfume. The more top notes you use, a more citrus-based aroma (lemon type

smells) will be noticeable. Base notes give your fragrance a more musky natural smell. Either way, go ahead and blend a few of the fragrances together and see what combination you prefer.

**Tip:** As a rule of thumb, each note should make up a certain percentage of the perfume, so be sure to balance out the use of notes. Too much of any one will affect the life of the fragrance. A good way to start is by blending 1 Top note, 1 Heart note and 1 Base note.

## How to Smell Perfumes like a 'Nose'

There is a sheet of paper in the kit, perforated into strips. To test your fragrances or perfumes, take a paper strip and dip one end into a fragrance. Then waft it gently in front of your face, about 20cm under your nose. Don't put it too close to your nose, or you won't get the full fragrance.



See our full range of toys and gifts at:  
[www.playmonster.co.uk](http://www.playmonster.co.uk)





## Let's start blending!

Before handling the fragrances, put on your lab gloves. You will be handling large quantities of fragrances, and although these will not damage your skin, the smell can be quite hard to wash off! Before taking off the gloves, wash and dry your hands, so that the gloves are ready for next time.

Start by fitting each of the fragrance bottles into the holes in the plastic tray, and put a pipette (plastic dropper) in front of each.

**Tip:** Always use the same pipette with the same fragrance, so that you don't contaminate the other fragrances.

The small depressions in the tray are so that you can mix test fragrances one drop at a time.

**Tip:** Write the blend you have used on the test strip so you can remember the formula. This is useful when you have several strips and are comparing different blends.

Using a pipette, suck up a small amount of fragrance then carefully squeeze one drop in to the depression (return any unused fragrance back to the bottle), then using a different pipette add a drop of another fragrance and so on until you have created the blend you want.

**Tip:** If you have never used a pipette before, practise using one with some water first. You will need to learn how to be precise, squeezing out one drop at a time.

To begin, you could try the following blend:

- 1 Drop of Musk (base note)
- 1 Drop of Floral (heart note)
- 1 Drop of Fresh (top note)

Next, use a test strip to assess the smell.



Next you could add to your perfume blend:

- 2 drops of citrus (a second top note)

See how this compares to the first blend and whether you prefer the smell.

**Tip:** Don't forget that the top notes give the perfume its immediate smell; the heart notes and base notes develop more slowly, so it is good to leave the test strip for half an hour then try it again. It will now smell a little different.

Record more details in the table below of how many drops of each fragrance you used to blend each perfume, and your notes on the smells (such as sweet, sour, light, heavy, outdoors, lemon, raspberry, or whatever it smells like to you). Or you can rate the Perfume in a score out of 5.

Perfume Name	Citrus Top Note	Fruity Top Note	Fresh Top Note	Floral Heart Note	Musk Base Note	Notes (how did you think the perfume smells just after mixing, and half an hour)
Test 1	1	1	1	1		3/5 light, subtle
Test 2	2		1	1	1	4/5 grapefruit

Now it's time to experiment with your own blends! Try smelling the individual fragrances and experiment with different combinations you think work well together. When making your test blends it is probably best not to use any more than 4 drops of any individual fragrance otherwise you may over-power the other fragrances. Remember to write down your results.

When you have blended a perfume that smells good on a test strip, put a very small amount onto the inside of your wrist to test it on yourself. The perfume will smell slightly different, and lower notes will develop in a few minutes. Note your observations.

Scaling up Production

Once you have designed a perfume you really like you can then fill one of the gift bottles to create your own unique bottle of perfume. However, you will need to mix your perfume in exactly the same ratio as your test blend to ensure it has the same smell.

Here’s the Maths

The Gift Bottles can hold 7ml of liquid. This is equivalent to about 120 drops of liquid from a pipette.

To get the correct ratio to fill the perfume bottle, first add up all the drops in your test blend.

For instance, if your blend has 2 drops of musk, 2 drops of Floral, 1 drop of Fresh and 1 drop of Fruity, the total drops used is 2+2+1+1 = 6

Next, divide the total number of drops required to fill the gift bottle (120) by the total drops used in the test blend (6). 120 / 6 = 20. Then multiply the answer by the number of drops used in the test blend.

Test Blend	Multiply by	Total Drops Req. to fill the Bottle
2 Drops of Musk	20 -	40 Drops of Musk
2 Drops of Floral	20 -	40 Drops of Floral
1 Drop of Fresh	20 -	20 Drops of Fresh
1 Drop of Fruity	20 -	20 Drops of Fruity

You will need to be very careful and accurate when filling the bottle.

Once the bottle is filled, write out a gift label for your perfume (invent a special name for it!), wipe the bottle dry and apply the label. It is now ready to use, or to give to a friend as a special present.

Don’t forget to wipe dry the test sample in the tray once you are finished, otherwise you will contaminate your next test.

How to Design a Unique Perfume for You or Your Friends

On the back page of this booklet there is a table that matches different personality traits to the different fragrances in the kit. First fill in the table by putting a ‘1’ against the personality traits that best match the person you are creating the perfume for. Next add up the rows for each fragrance to get the blend ratio... see the example below.

Let’s see how we can design an individual perfume for Skye!



Name: Skye  
Birthday: 12th May  
Likes: Animals, school, reading, photography and art  
Favourite Place: The great outdoors  
Pets: I have a cat named Hermione  
Favourite Food: It has to be chocolate cake, I make it with my Gran  
Holiday Heaven: Camping with my friends  
Dislikes: Shopping and school discos!

From her profile we can determine that Skye is clever, creative, artistic, sociable, loves being outside and animals.

We can translate this profile to the table to the right: You will see by adding up the points that this gives you a unique blend that matches Skye’s personality - 3 drops of Musk, 2 drops of Floral, 1 drop of Fruity, and 2 drops of Fresh.

Name:	Skye	
Fragrance	Personality	Score/Blend
MUSK	hardworking	2
	independent	
	studious	1
	conscientious	
Total Score for Musk		3
FLORAL	romantic	
	creative	1
	music lover	
	artistic	1
Total Score for Floral		2
CITRUS	rebellious	
	individual	
	outspoken	
	leader	
Total Score for Citrus		0
FRUITY	party girl	
	fashion conscious	
	sociable	
	fun loving	1
Total Score for Fruity		1
FRESH	outdoors type	1
	adventurous	
	sporty	
	animal lover	1
Total Score for Fresh		2



Here are three more people for you to Invent-a-Scent for. See what blend you can create from their profiles. Check your results to see if they match with the blends we have created for them.



**Name:** Aria  
**Birthday:** 7th October  
**Likes:** Books, writing, politics, fashion  
**Favourite Place:** The woods in spring  
**Pets:** Romeo, my cat  
**Favourite Food:** Chocolate ice-cream  
**Holiday Heaven:** Reading with the sound of the sea as a soundtrack  
**Dislikes:** TV and football

**Name:** Mia  
**Birthday:** 23rd August  
**Likes:** Music, I love my guitar, parties, having fun  
**Favourite Place:** Practice, with the band  
**Pets:** Unfortunately I'm allergic!  
**Favourite Food:** Pizza, my Mum tells me to eat more fruit and veg all the time!  
**Holiday Heaven:** We went to a music festival last year, it was amazing!  
**Dislikes:** Keep the pineapple off my pizza, yuck!



**Name:** Sadie  
**Birthday:** 3rd March  
**Likes:** Fashion, shopping and magazines  
**Favourite Place:** My Mum's flower stall, I love helping her make bouquets  
**Pets:** My pampered puppy, Paris  
**Favourite Food:** Mango ice-cream  
**Holiday Heaven:** Tropical island somewhere exotic  
**Dislikes:** Smelly dogs, I wash Paris every day!

## Results

Below are the blends we created for the three girls above. Did you come up with similar blends?

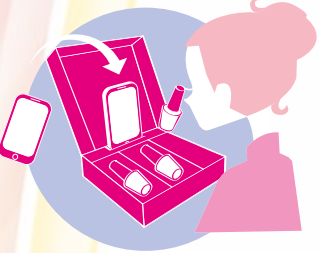
	Aria	Mia	Sadie
MUSK	1	1	1
FLORAL	2	2	2
CITRUS	1	1	0
FRUITY	1	3	1
FRESH	2	1	1

Note: There are no right or wrong answers!

## Mobile Phone Holder

Included in your Fablab kit is a mobile phone holder, which lets you easily view our cool "how-to" videos packed with exciting content to discover new techniques and styles.

Simply place your phone into the holder and go to our channel at [youtube.com/fablabuk](https://www.youtube.com/fablabuk).



## Share your favourite designs!

We would love to see your creations! Share your unique perfume blends with us on social media by mentioning or tagging @fablabuk

Name:		
Fragrance	Personality	Score/Blend
MUSK	hardworking	
	independent	
	studious	
	conscientious	
Total Score for Musk		
FLORAL	romantic	
	creative	
	music lover	
	artistic	
Total Score for Floral		
CITRUS	rebellious	
	individual	
	outspoken	
	leader	
Total Score for Citrus		
FRUITY	party girl	
	fashion conscious	
	sociable	
	fun loving	
Total Score for Fruity		
FRESH	outdoors type	
	adventurous	
	sporty	
	animal lover	
Total Score for Fresh		