



#### Interplay on the Web!

To get all the latest information about  
Interplay's range of products, visit  
[www.interplayuk.com](http://www.interplayuk.com)



#### Interplay UK Limited

Meter House, Fieldhouse Lane, Marlow,  
Buckinghamshire. SL7 1LW

Designed by Interplay UK Limited

Made in China

©2012 Interplay UK Limited

Manual written by Nick Baker

**Product Code** LW102 v2.0 2012

Please retain our address for future reference.

Designed for  
children by  
Nature Experts





Explore the wonderful  
world of worms with  
naturalist Nick Baker!

Nick Baker's

# WORM WORLD

Designed for  
children by  
Nature Experts



See inside the amazing  
world of worms!

Learn about their fascinating lifestyle and their  
valuable contribution to the world we live in.

[www.interplayuk.com](http://www.interplayuk.com)



## Important Safety Information!

This kit conforms to the following safety standards: Europe: CE and EN71 USA: ASTM

# WARNING!



For children over 5 years of age only.  
For use under adult supervision.  
Read the instructions before use.  
Follow them and keep them  
for reference.



Not suitable for children under 36 months due to small parts that could represent a choking hazard.

None of the accessories in this kit should be allowed to come into direct contact with foodstuffs.

Wash hands after using this kit or the activities contained in this booklet.



To get all the latest information about Interplay's range of products, visit [www.interplayuk.com](http://www.interplayuk.com)



**interplay**

**Interplay UK Limited**

Unit D, Meter House, Fieldhouse Lane,  
Marlow, Buckinghamshire. SL7 1LW



## Your Kit Contents

**You should find the following components in your kit:**

- **Plastic Worm Housing Lid & feet**
- **3 x Tunnelling Materials**
- **Cardboard Shade**

*In the unlikely event that any of the components are missing, please call our Customer Services Helpline on 01628 488525*

## About this Kit

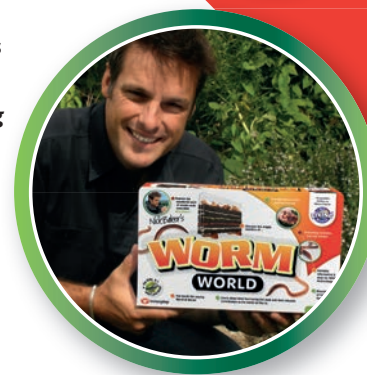
**This kit is a hands-on guide for budding naturalists and contains the equipment you need to observe and study the fascinating life of worms. The kit is designed to be fun and informative for kids of all ages. However, young children will need the help and supervision of an adult.**

This kit can be used all year round. However, in hot summer months please ensure your worms are kept in a cool environment and the soil is kept damp.

Worms are fairly easy to find locally, however, Interplay can supply them if necessary - Please see order details at the back of this book.

Finally, I hope you have fun with this kit and discover some fascinating insights into the wonderful world of worms.

Designed for  
children by  
Nature Experts



*Nick Baker*



## Introduction

**Worms are brilliant little animals, easy to take for granted and often going unnoticed as they live out their lowly lives right beneath our feet, and yet, we owe them a massive debt of gratitude.**

As they quietly work away at their lives, toiling in their tunnels, they enrich the very soil that we depend on; mixing it up, fertilizing it and allowing air and water to penetrate into it. This creates a healthy soil, and when the soil is healthy, then the plants that grow in it are healthy and the animals that eat the plants are healthy; in fact everything is happy from the plants up! That includes the very plants we depend on from crop fields to forests. The positive influence of worms can be seen and felt everywhere.



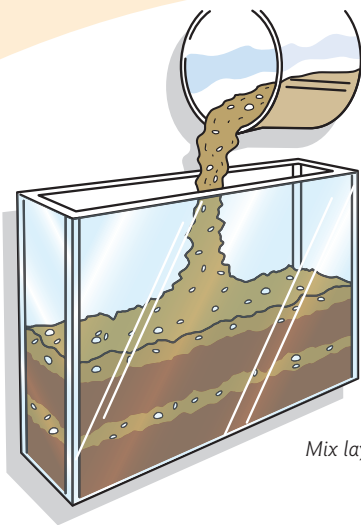
[www.interplayuk.com](http://www.interplayuk.com)

The problem with worms is that they spend most of their lives out of sight, living out their lives in private. Worm World gives you a window into the mysterious goings on in the soil beneath our very feet and is a wormery designed to be a safe and pleasant experience for both worms and worm watchers. So follow these instructions and enjoy studying and getting to know these wonderful little wrigglers a lot better.

## Setting Up Your Worm World

**Worm World is a simple device consisting of a clear plastic tank, with a lid and feet for it to stand on, you will also need some soil, sand, some dead leaves or leaf litter and of course some worms, all of which can be very easily obtained.**

1. Collect some soil from the garden, park or fields. I like to look for molehills as these are a source of good fine soil. You will want to get rid of any big lumps, stones or twigs as well; a good way to do this is to use a soil sieve, or use your fingers.



Mix layers of sand and soil

**2.** The main part of Worm World is the plastic tank and basically what you need to do is build up lots of layers. Start by making a thick layer on the bottom, around 2cm deep. Then add a thin layer of sand, before the next layer of soil. Keep going alternating the layers until you are about 3 cm from the surface with a final layer of soil.

**3.** Then you want to tamp down the soil (you can use the lid of the Worm World to do this).

**4.** Worms don't like things too dry or indeed too wet, soil that sticks together when you squash it in your hands is perfect, but if you can squeeze water out of it is too wet! Before you add the soil to your wormery, you can check this. If it is too dry, sprinkle on some water and mix it in.

**5.** Now the fun bit, you've just got to add your worms to the top of your Worm World. Attach the lid as they may try to escape initially by climbing up the sides, but in time (usually an hour or so) they will settle down and start to burrow.

**Top Tip:**

*To make life more interesting for you and the worms, try setting it up with different kinds of soil from different places in the garden (look for soils of different colours). Some soil will have more decomposing plant material, other can be sandier or with more clay. Maybe mix in a layer of potting compost as well and see what your worms prefer.*

Designed for  
children by  
Nature Experts





## Getting Your Worms

**Anywhere there is un-disturbed soil you will find earthworms, they are best collected by digging up the soil. Alternatively you can look under logs and rocks as sometimes you will find earthworms hiding.**

If you are having difficulty finding any, you can cheat and contact Interplay (see back of booklet) or go to your local fishing store and buy some!

You don't need too many; 5 big Earthworms or 15 Brandling Worms (see the guide to common worms) are plenty for the size of your wormery.

If you're wanting to bag the big ones, then it's best to hunt for them after dark with a torch.

At night they often surface from of their burrows and can be easily found on lawns... However, catching them is a different matter, as they are very sensitive to vibrations and if they feel your footsteps they'll quickly shoot back into their burrows. You therefore have to be sneaky and quick, but at the same time quite gentle. Try and block their retreat with

one hand and then slowly and gently pull them from their burrow, don't be too hasty or you'll snap them in half and contrary to urban myth - that doesn't mean you've created two worms, a badly injured worm like any other animal will die.

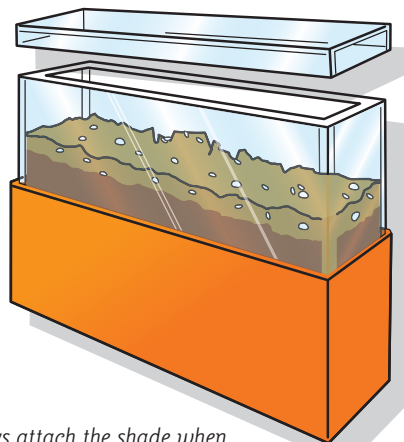
## Maintenance

**Once your worms have settled down and started burrowing then you just need to keep the conditions right for them. A warm room is fine as long as the soil is kept nice and damp. Never let the soil dry out as this is the quickest way to make your worms very unhappy!**

When not observing your worms, attach the shade to Worm World because worms are happiest in the dark.

Provide plenty of food in the form of organic material - if you've got big earthworms then dead leaves are best. It's quite an interesting experiment to see which species of leaf are favoured. I always find it quite amazing that you can pop a leaf in the top of Worm World and overnight it magically disappears.





*Always attach the shade when not observing your worms*

This demonstrates on a small scale what happens all over the country... so if you have ever wondered where all the leaves go that fall in autumn, well now you know.

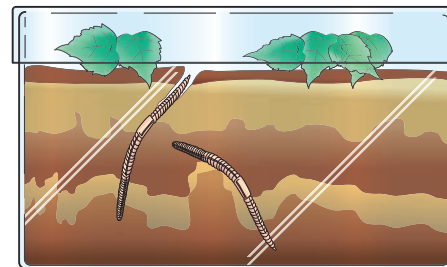
Once you've finished studying your worms it is time to let them go where you found them. You can keep worms happy in your Worm World for around 4-6 weeks. After that it is kindest to release them where you found them, preferably on a nice damp, warm night.

## What you can observe in Worm World

**There are many interesting things to see in Worm World**

1. When you first introduce worms to Worm World you will see how they move and how easily they can burrow under the soil
2. You will see how they churn and loosen compact soil.
3. You will see them underground in their burrows and see how the tunnels they make allow air and water into the soil.

4. By adding leaves you will see how they take them underground. An interesting experiment is to count the number of leaves they bury. Add about ten leaves each day and see how many are left on top the following morning. You'll probably be surprised at the number they drag into the ground.



*See how many leaves your worms drag into the soil*

Designed for  
children by  
Nature Experts







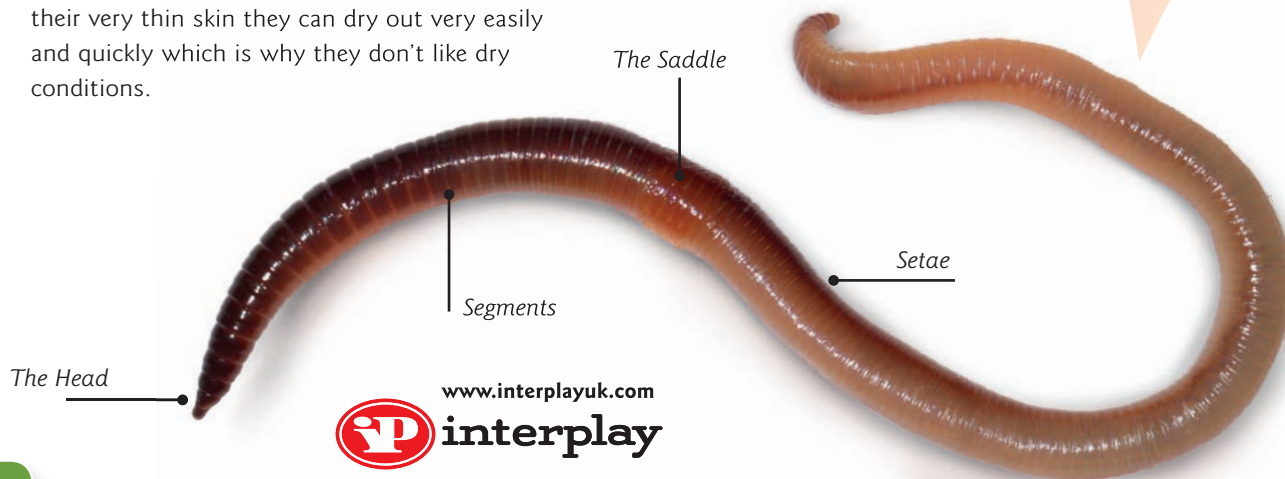
5. After a few weeks you will see how they mix up the soil. Gradually the layers of sand and soil will become mixed.

6. You may see a worm resting on the surface, once you disturb it you will see how quickly it moves back into the soil.

## What's a Worm?

**Worms are fairly basic creatures; simply put they are like little free living intestines that specialize in eating dirt and rotting plant matter.** 70-90 % of their bodies are made up of water and because of their very thin skin they can dry out very easily and quickly which is why they don't like dry conditions.

These soil eating machines are basically one tube (the gut) held within the body wall or skin. Sandwiched between the two are loads of muscles, blood, hearts and other things that a worm needs to live and survive. Although they are quite simple animals, do have a good look at a worm really close up and see if you can identify all the various parts of its body using the annotated photograph below. Understanding what all the bits are for will help you understand worms much better and it might help explain what they get up to in your Worm World.





Designed for  
children by  
Nature Experts



**The Saddle** - This is the thick section of a worm and is only found in adults. It is used to make a special kind of mucous for egg cases and it is also used when worms mate.

**The Head** - This is usually much more pointed than the other end and it contains a tiny mouth, hidden under a lip like flap. You will have to watch your worms very quietly and for a long time to see it being used to grasp and drag leaves into its burrow.

The hind end is usually much wider and 'paddle' shaped, very useful for expanding and helping to anchor the worm into its burrow.

**Top Tip:**

*If you put a worm on the lens of a torch you will see the dark squiggle of its guts running the length of its body, and next to this is a bright red blood vessel, watch out for pulses of blood being pumped along it by the worm's five hearts.*

**Top Tip:**

*Go out into the garden on a warm but damp night (especially in late summer/autumn) and you will see fully grown adult earthworms, stretched out of their burrows reaching for dead leaves to drag underground and if you tread carefully (worms are very sensitive to vibration) you might get to see them mating.*

**Setae** - these are the little bristles that stick out of the worms body, 8 for every segment. They are hard and spiky and are used to help the worm grip the inside of its burrow when digging and moving around. If you have ever seen a worm being pulled out of the ground by a blackbird, the setae are the reason that it looks like such hard work for the bird!

**Segments** - All earthworms belong to the group of creatures (phyla) called the annelids or ringed worms and you can see why they're called that, can't you?



## Know Your Worms!

**A worm is not just a worm; there are 60 different species in the UK alone, although only 26 of these are thought to be native.** They can be split into four main groups (called ecotypes). There are those which live in decaying matter, those that live in the surface among leaf litter, and those that live in horizontal burrows and then there are those that live in vertical burrows lower down in the ground and make the squiggly worm casts on the surface of your lawn. Have a look around and why not try them all out in your Worm World at different times.

**Compost Worms** also known as Brandling or Tiger Worms live in and around any compost heap. They are red and stripy worms and there are two very similar species *Eisenia fetida* (has a pale saddle) and *Eisenia veneta* (has a red saddle). They are not too fussy about the conditions and like lots of dead plant material to eat.

Next come **Surface Worms** - look under logs and you might find some other pink or reddish worms. These will be the species that worm experts call epigeic worms, they rarely burrow into the soil but love crawling about among rotting material (leave folded plain cardboard out in the garden so it becomes soggy and then after a few weeks peel the layers apart and you will probably find them)



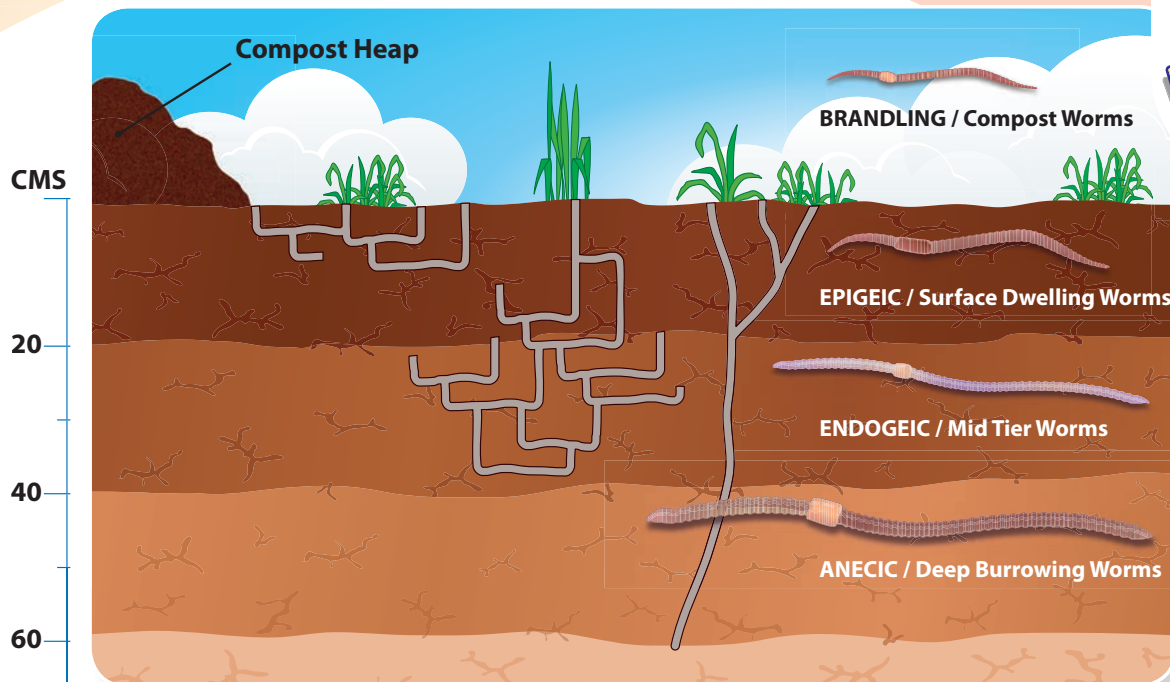
The pale worms are sometimes called **Endogeic Worms**. They occupy the mid-tier, living 20 - 40cm below ground. There are several species in this group but all of them have a pale grey or green pallor. They tend to tunnel on the horizontal; some make casts on the surface too. The commonest is a greenish looking fella called *Allolobophora chlorotica* who looks distinctly unwell.

The next species are called **Anecic Worms** and they live in permanent vertical burrows about





Designed for  
children by  
Nature Experts



60cm below ground but can be found as far down as 3 metres! It tunnels vertical burrows like mine shafts and makes a living dragging leaves into its burrows from the surface. It is also largely responsible for most worm casts found on playing fields.

The **Common Earthworm** (*Lumbricus terrestris*) is a member of this species and is the biggest earthworm in Britain growing up to 30cm in length. It does very well in Worm World, although because of its size, its best to have no more than five.

## The Wonderful World of Worms

**Some people will not understand worms at all let alone why you might want to keep them in a wormery. So I find it best to be ready to enlighten these individuals with a few undeniably mind blowing facts about these simple but incredibly important, underestimated and under-appreciated creatures.**

Worms have many fans including the famous naturalist Charles Darwin who dedicated 39 years of his life to studying them. Also, The Egyptian queen, Cleopatra deemed them sacred and even Aristotle had many words of praise for these lowly creatures 'calling them the intestines of the soil' in recognition of the good they do to the land.

If this still isn't impressive enough then many animals are also fans of worms. Badgers, moles, hedgehogs, frogs and many species of birds all depend on them for food.



*Worms are the staple diet of many animals*



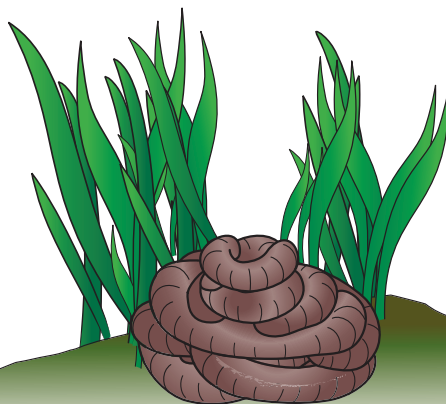
Designed for  
children by  
Nature Experts



Worms find other worms by smell - their mucous contains special chemicals that other worms can sniff out.

The squiggly worm casts that you might find on your lawn are actually worm poo! But don't worry it is good stuff and completely harmless. Scientists have analysed the compost produced by worms and have shown that plants such as flowers and vegetables grown in worm composted soil grow 36% better than those in regular expensive compost you get from the garden centre!

Here's why... A worm cast contains many nutrients essential to healthy plant growth, including 1-2% nitrogen, 1-2% phosphorus, 1-2% potassium and loads of good squishy organic matter!



Worm cast

If you like fruit and veg then it's worth remembering that worms are very good for the soil. In fact soil is much more than just dirt, it's a balanced mixture of elements and compounds all held together with water and humus. Worms put all these things together, they could be said to build good soil. In an acre of healthy grassland there may be something like 3 million worms! Between them can turn over and bring to the surface 8-10 tonnes of soil in a year... That's a lot of worm poo.

Worms have five hearts towards the front of their body, you can see the effects of these strong little blood pumps in the pulses of blood running down the main blood vessel that travels along the length of the body - you might need to use a magnifying lens to see this properly.





You can tell if your worm is a fully grown adult, as only the grown-ups have a saddle as it is used in mating and in the production of the egg cocoons. You might think that finding worm eggs is next to impossible but they are quite easy to find if you know what you are looking for. You might notice them in your wormery as small yellow, brown or white lemon shaped objects about 2mm long.



*Worm eggs*

A big Earthworm can shift a stone weighing more than 2 ounces which for an animal weighing less than 1/13 ounce is like you or me shifting a small van without any help!







Designed for  
children by  
Nature Experts

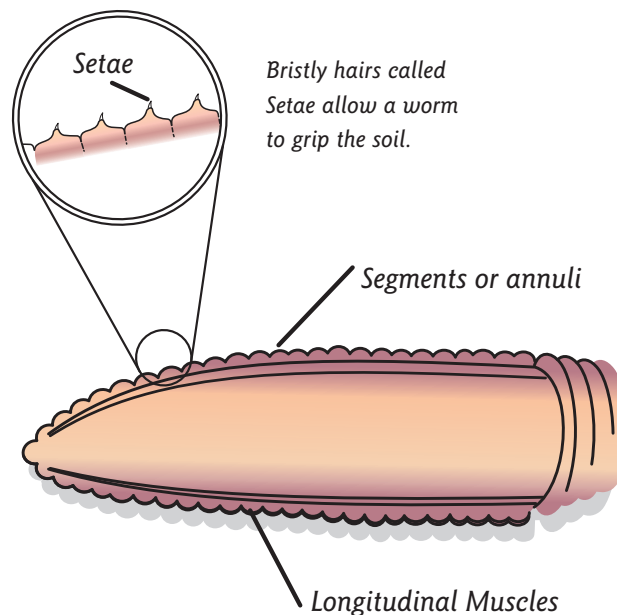


## How does a Worm dig?

**Take your finger and try to push into the soil in your garden lawn, wriggle it about. It's quite difficult, isn't it?**

Even with all your body weight, your great mind and all that muscle you have to admit the lowly worm does a much better job than you. The question is how? Well it's because worms don't have a skeleton, and can contract and expand different parts of their body, using their muscles to squeeze, push and pull through the soil, wriggling into a tight space and then squeezing the blood into the body to lever apart the soil and then dragging the rest of its body in behind. The job is made all the smoother by the addition of mucous and of course the worm comes complete with its own ground grips, its bristly setae which stick out sideways and allow the worm to pull on the sides of its burrow.

[www.interplayuk.com](http://www.interplayuk.com)





If you gently pull a worm (the bigger the better) backwards between your fingers you will feel the rough and spiky setae. If you put a worm on a piece of paper and listen to it - you will hear a scratching sound as it moves around - how does a soft and squidgy animal make such a noise? Well again it's those hard little bristles the setae at work and it is these which help a worm to grip the inside walls of its tunnel.

### Useful Books and links

#### **The Earthworm Society of Britain**

[www.earthwormsoc.org.uk](http://www.earthwormsoc.org.uk) is an excellent organisation all about promoting the understanding and the recording of British Earthworm species - it kind of does what it suggests in its title!

**Archive** is an online source archive of pictures, videos and information and has a page dedicated to the worms (as well as many other creatures) [www.archive.org/earthworm/lumbricus-terrestris/](http://www.archive.org/earthworm/lumbricus-terrestris/)



#### **The Worm Book**

by *Nancy Nancarrow and Janet Hogan Taylor*. Published by Ten Speed Press. This is a fantastically readable book stuffed with many worm facts, with plenty about how to get the worms to work for you and make compost.

#### **Earthworms Nature's Gardeners**

by *A. John Morgan*. This is a good little book about worms, their identification, their lives and how to harness their incredible powers to our own advantage.

### More General Insect Guides!

**Nick Baker's Bug Book** - I write a chapter on the common garden species. A book for any youngster who likes creepy crawlies.

**Bug Zoo** - *Nick Baker* - This is another book I wrote to help those who want to keep creepy crawlies including a section on worms.





## About the Author

**Nick Baker is a professional naturalist whose career has taken him from being a field ecologist working on birds, butterflies and badgers to top TV broadcaster.**

Best known for his wildlife programs on BBC, Animal Planet, Discovery and National Geographic, he has had many adventures with many species from gorillas to polar bears, but his real love is that of the wildlife in his own garden, the little things that make the world go around - it was the insects and other invertebrates that started him off as a kid and to this day still hold a very special fascination.

## **Nick's TV programmes include:**

The Really Wild Show  
Nick Baker's Weird Creatures  
Nick Baker's Beautiful Freaks

## **Nick has written over 12 nature study books; titles include:**

My First Cockroach  
Nick Baker's Bug Book  
Nick Baker's British Wildlife  
The New Amateur Naturalist  
Habitat Explorer Guides  
Nick Bakers Bug Zoo

## **Dedicated to conservation, Nick is involved with many wildlife charities and trusts:**

Vice President - Butterfly Conversation Trust  
Vice President - (youth) RSPB  
Vice President - The Wildlife Trusts  
President - Bug Life

*To find out more about Nick and his many achievements visit his website: [www.nickbaker.tv](http://www.nickbaker.tv)*

Designed for  
children by  
Nature Experts





## Mail Order Worms and Spare Parts

**Worms and spare parts for Worm World can be ordered by phone, by post or online:**

**Phone:**

Call our Customer Services help desk  
**01 628 488525**

**Post:**

Write to Interplay stating your requirement and enclosing a cheque made payable to 'Interplay UK Limited'. Please add a delivery charge of £2.95 to all orders under £35.00

**Note:**

Prices quoted are for UK only.

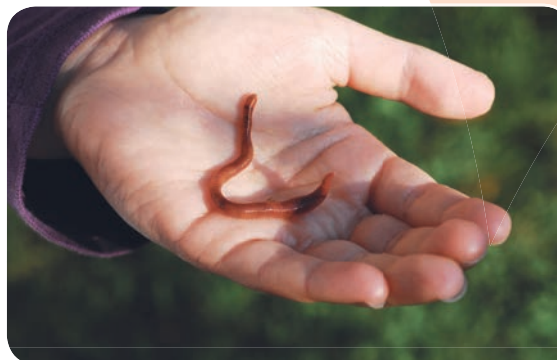
**Online:**

Order online at [www.interplayuk.com](http://www.interplayuk.com)

**Please Note:**

Postage charge: £2.95 for orders under £35.00  
Postage free for orders over £35.00 Prices are quoted are for UK only.

<b>A Tub of Worms</b> for Worm World	£3.00
<b>Worm World</b> (complete set)	£14.99
<b>3 Packs of Worm World Sand</b>	£1.00
<b>Worm World Shade</b>	£1.00

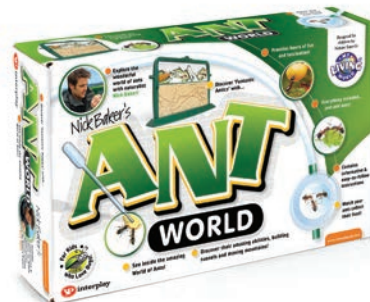


## More Information about Worms

Our website [www.interplayuk.com](http://www.interplayuk.com) provides curriculum based teachers notes and classroom activities that can be downloaded free of charge.

*If you had fun with this kit, why not try some of the other kits in the My Living World range.*

Designed for children by Nature Experts



### Interplay on the Web!

To get all the latest information about Interplay's range of products, visit [www.interplayuk.com](http://www.interplayuk.com)



### Interplay UK Limited

Meter House, Fieldhouse Lane,  
Marlow, Buckinghamshire. SL7 1LW

Designed by Interplay UK Limited

Made in China

©2012 Interplay UK Limited

Manual written by Nick Baker

**Product Code** LW102 v2.0 2012

Please retain our address for future reference.