

Important Safety Advice

Safety Advice for Supervising Adults: This project is safe to do, but you must follow the instructions as specified. Because children's abilities vary so much, even within age groups, supervising adults should exercise discretion as to whether this project is suitable for children in their care. The supervising adult should discuss the warnings and safety information with children before commencing the activities, and observe the activities at all times. The activity in this kit should only be completed with the materials specified and used as instructed. Read and follow these instructions, the safety rules and first aid information. Keep them and our address for reference.

Keep Small Children and animals away from the components at all times. Carefully put all equipment away when not in use and store out of the reach of small children and babies.

Batteries: Do not insert batteries into the battery holder/s / box/es until the model is complete, or where instructed to do so. Slide the switch to the off position before inserting batteries. 2 x 1.5v AA batteries are required. Do not use rechargeable batteries. Never try the activities with different batteries to those recommended. Never mix old and new batteries. Do not try to recharge non-rechargeable batteries. For use with DC only. Use only the batteries specified, and insert these with the polarity as shown in the battery box (the spring in the battery compartment is for the negative (-) terminal of the battery). Do not short-circuit the supply terminals. Remove and carefully dispose of exhausted batteries.

Mains Electricity: Never connect any of the components in this kit to mains electricity. Children should be instructed about the dangers of mains electricity.

The Battery Box: To open the battery box, first remove the security screw in the lid, then slide open the lid. Connect only to the motor supplied. Never cross or hold bare wires when the batteries are connected as heat can be generated that may cause injury, fire, or burning. Remove batteries from the battery box when not in use.

Keep small children and animals away from the components at all times. Carefully put away all equipment when the kit is not in use, and store out of the reach of small children. Never leave electrical circuits unattended, even if they don't seem to be working.

WARNING



This kit is for use by children aged 8 years and over.

This kit is not suitable for children under 36 months due to small parts that could cause a choking hazard. Adult supervision is required at all times. Contains functional sharp points that could cause injury.

TECHNOKIT

Build & Play

Easy to Assemble

No Glue, No Mess

BUILD AN **ELECTRIC** *stunt* buggy

Construction Guide



It pulls wheelies and spins!

interplay
www.interplayuk.co.uk

interplay
www.interplayuk.co.uk

Designed and manufactured by:
Interplay UK Ltd Unit D, Meter House,
Fieldhouse Lane, Marlow, Bucks SL7 1LW
Please retain our address for future reference.
Made in China



Technokits™ Is a trademark of
Interplay UK Ltd

TS011 v3.0 2012

Building Your Stunt Buggy

BEFORE YOU BEGIN

Follow the instructions on the reverse of this sheet to construct your 'Stunt Buggy'. Before you begin construction, look carefully at the parts list and try to recognise the name, and understand the purpose of each part in the kit.

WORKING / CONSTRUCTION AREA

Construction should ideally take place on a smooth, flat surface that is protected by used newspapers or similar. Always ensure that the area of construction will not be disturbed.

PROBLEMS?

If you become 'stuck' or are unsure of what to do next, ask an adult for assistance. Always look very carefully at the constructional illustrations before joining parts. Most parts within Technokits can however be easily taken apart, should a mistake be made.

When you have completed Construction

TESTING THE MODEL

Provided that you follow the construction directions accurately, Technokits normally function correctly first time, however, here are some helpful tips in case your model should fail to work correctly:

The motor does not run when the buggy is switched on terminals.

Check that the batteries are in good condition
Ensure that the battery box is switched on
Ensure that the wires are firmly connected to the motor

Motor runs but buggy does not move.

Check that the rubber band is on both pulleys
Check that the wheels rotate freely.

Customising your Stunt Buggy

Most of the panels which make up your Stunt Buggy can be fitted the other way round, so that the Buggy is white on the outside, allowing you to paint it, if you want to.

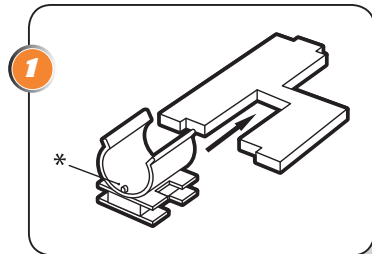
If you decide to change to a white Stunt Buggy, please note that this will mean that the motor has to be located on the other side of the Buggy, and it will now drive in reverse!

To make the Buggy go forwards properly, you will need to fit the elastic band over the pulleys in a figure '8'.

Cut out these wheel rims (following the blue lines) and stick them onto your foam wheels.

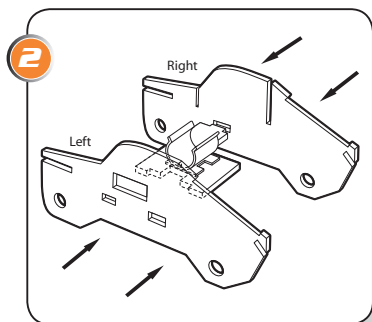


interplay
www.interplayuk.co.uk

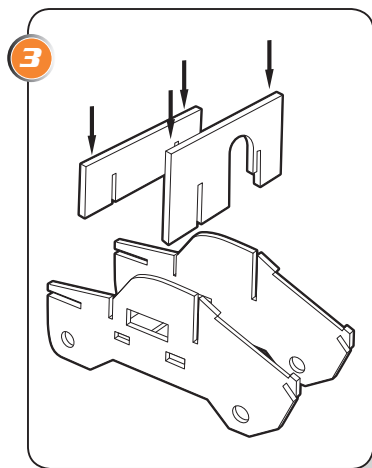


Carefully separate the components. The slots should slide into place without excessive force. If the fit between two pieces seems too tight, check to make certain that you have not damaged either of them.

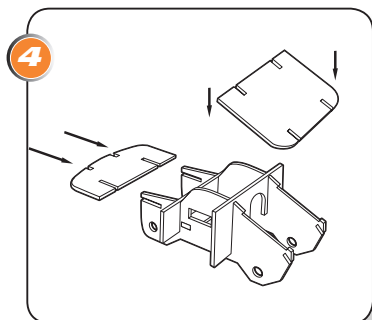
Slide the motor mount into the slot in the floor section, taking care to ensure that the 'bump' on the mount [*] is located as shown.



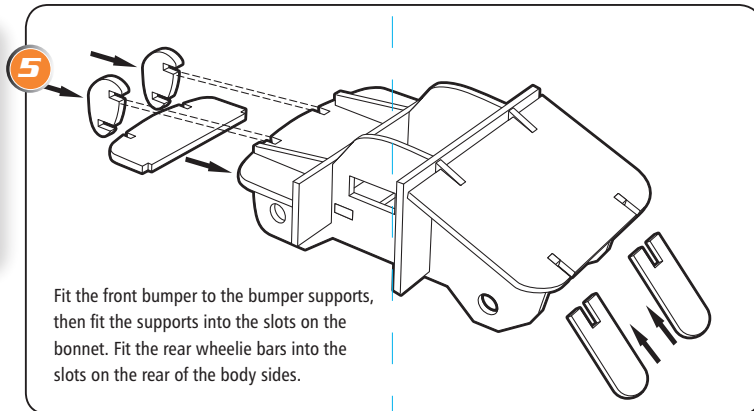
Locate the tabs in the floor section in the slots in the left and right body sides.



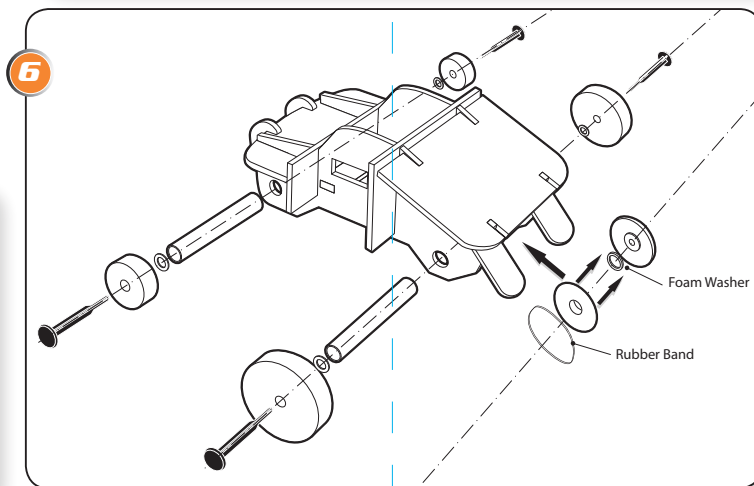
Push the front and rear bulkheads into the slots on the body sides. Keep the cut-out on the rear bulkhead on the right side of the buggy.



Push the bonnet and boot sections into the corresponding slots.



Fit the front bumper to the bumper supports, then fit the supports into the slots on the bonnet. Fit the rear wheelie bars into the slots on the rear of the body sides.

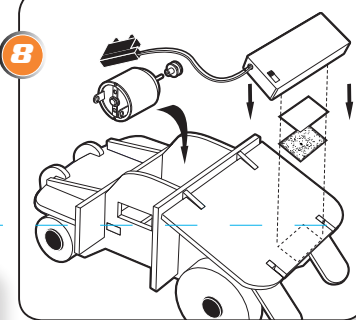
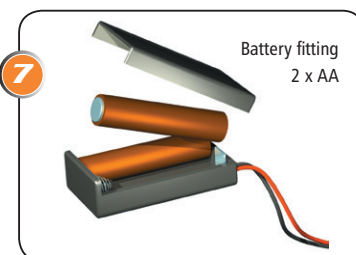


Fit the rear axle with foam washers and rubber bands.

6 Select one of the 3 foam washers and locate it on the driven pulley. Snap the other half of the driven pulley in place. Remember: The small diameter washer will make your buggy go faster on flat, smooth surfaces; the large diameter washer will make your buggy accelerate better, climb better, and perform better on rough surfaces. You can change these washers after having built the buggy by removing the rear axle and opening up the driven pulley.

Slide one of the axles through the rear axle holes, locating the pulley onto the axle, and looping the rubber band over the pulley. Push a stub axle through the hole in the centre of each rear wheel. Place a washer on each stub axle, and push the stub axle into the rear axle.

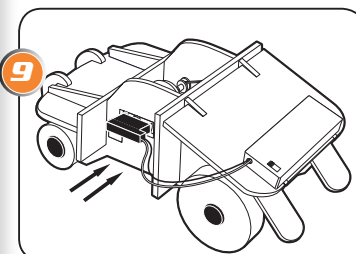
Put the remaining axle into the holes for the front axle and fit the front wheels as above.



Ensure that the switch on the battery box is in the off position and insert 2 x AA batteries (as shown above).

Peel the backing paper from the self adhesive Velcro pad and stick the pad to the 'boot' of the buggy as shown. Stick the battery box to the Velcro pad.

Push the drive pulley onto the motor shaft and clip the motor into the motor mount, ensuring that the notch in the rear of the motor locates on the bump in the motor mount.



Plug the battery box onto the motor, making sure that the terminals align properly. Your buggy should 'pull wheelies' quite easily. You can make the buggy pull wheelies more or less easily by changing the position of the battery box on its Velcro pad, which will adjust the balance of the buggy. If you move the battery box forward the buggy is more stable, moving it rearwards makes it more unstable.

Construction Guide

Parts List

