

TheraCal PT[®]

PULPOTOMIES. **THE THERA WAY.**



Rx Only

TheraCal PT[®]

Dual-Cured Resin Modified Calcium Silicate *Pulpotomy Treatment*

Pulpotomies the THERA way...

TheraCal PT is a biocompatible, dual-cured, resin-modified calcium silicate that is used to treat exposed dentin. TheraCal PT maintains tooth vitality by performing as a barrier and protectant of the dental pulpal complex.

TheraCal PT's calcium release properties and ability to generate an alkaline pH allows for it to be used in deep cavity preparations. The dual-cure ability permits immediate placement of the restorative material.

TheraCal PT is primarily indicated for:

- **Pulpotomies:** TheraCal PT may be placed after the partial or full removal of the coronal pulp.

TheraCal PT can also be used for:

- **Pulp exposures** (direct pulp capping): TheraCal PT may be placed directly on pulp exposures after hemostasis is obtained.
- **Protective liner** (indirect pulp capping) or base under a variety of substrates.



Working Time:
45 seconds at 35°C
(minimum)



Setting Time:
5 minutes at 35°C
(maximum)



Time Saver:
Restore in 1
office visit



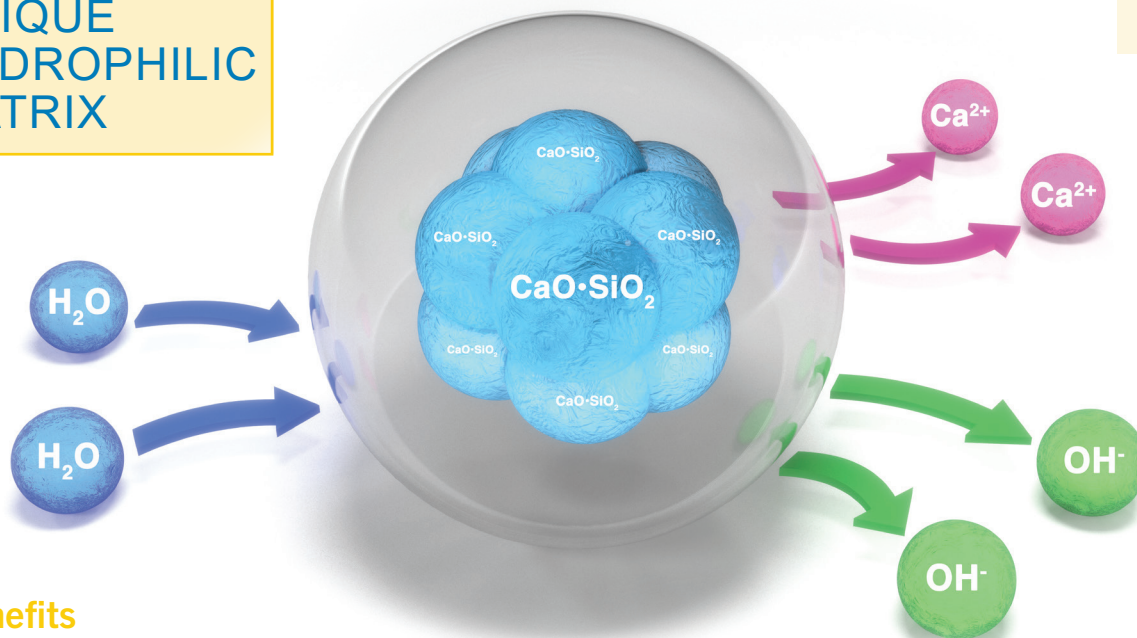
■ DUAL-CURED

■ EASY APPLICATION

■ RADIOPAQUE

■ ALKALINE pH

UNIQUE HYDROPHILIC MATRIX



Thera Benefits



The chemical formulation of TheraCal PT consists of synthetic Portland Cement calcium silicate particles in a hydrophilic matrix which facilitates **calcium release**.*



TheraCal PT's **physical properties** resist breakdown and degradation leading to a durable seal.*



Alkaline pH

Alkaline pH promotes pulp vitality.¹



Moisture tolerant

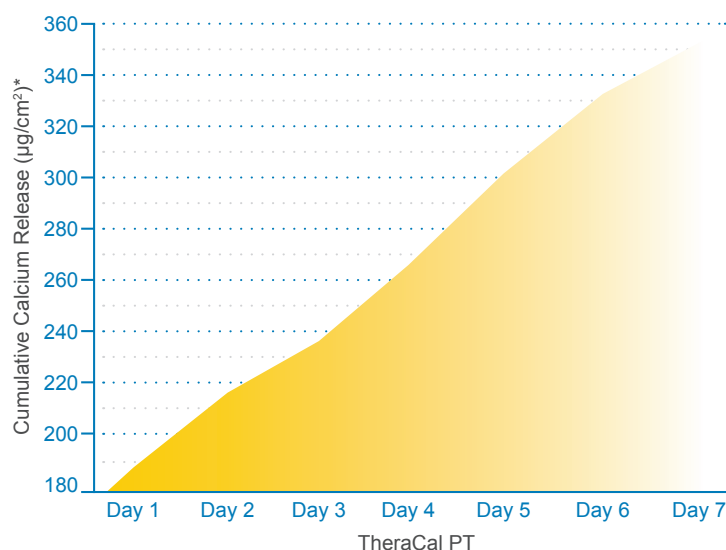
Low water solubility.*



Easy Syringe Application

Unlike traditional MTA products, there is no mixing by hand. Easily and directly dispense TheraCal PT from the dual-barrel auto-mix 4g syringe.

Cumulative Calcium Release



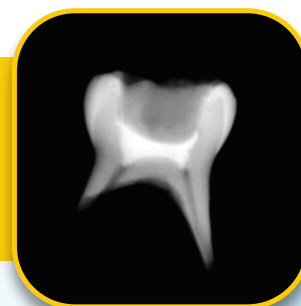
¹ T. Okabe, M. Sakamoto, H. Takeuchi, K. Matsushima. Effects of pH on Mineralization Ability of Human Dental Pulp Cells. Journal of Endodontics, Volume 32, Number 3, March 2006.

* Data on file.



Radiopacity

TheraCal PT is radiopaque, allowing for easy identification and differentiation from recurrent decay and other restorative materials.

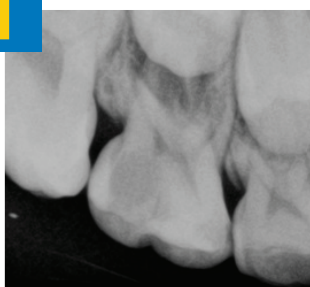


Pulpotomy Case

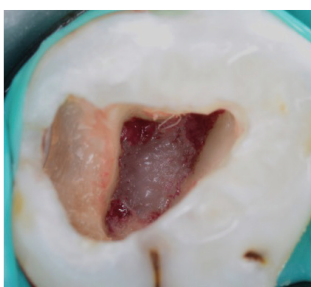
Pulpotomy with TheraCal PT in a primary molar

Dentistry courtesy of
Dr. Juan Carlos Hernández Cabanillas

1



X-Ray of radiographic diagnosis of pulpitis



Removal of coronal pulp and hemorrhage control

2

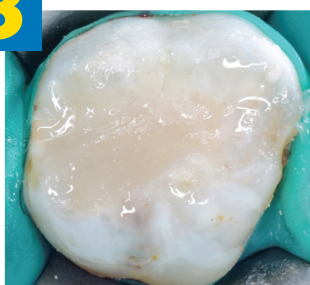


Application of TheraCal PT in the pulpal chamber

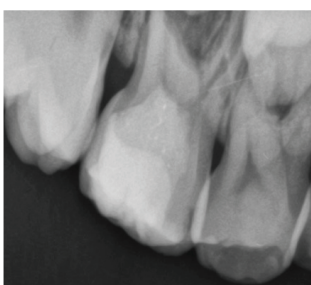


Polymerized TheraCal PT

3



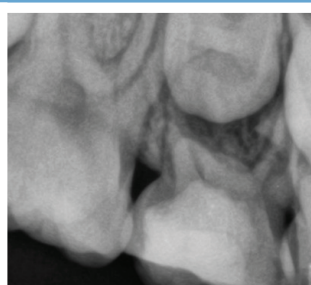
Final composite restoration and post-operative radiograph



4



90-day clinical follow-up and radiograph



Ordering Information

TheraCal PT Single Syringe Pack **H-34110P**

1 automix syringe TheraCal PT , accessories, instructions

TheraCal PT Dispensing Tips (30)..... **X-81270P**

Exclusively distributed by Curion

curion.ca | **EN: 1.800.667.8811** | **FR: 1.800.211.1200**

 **curion**
formerly Bisco Canada