

LMSharpDiamond™

LM

feel the
difference

LMSharpDiamond™
SHARPEN FREE COATING

CHOOSE SHARP.



LMSharpDiamond™ - Enjoy sharpen free prophylaxis and perio



LM Sharp Diamond™ instruments are completely sharpen free. These instruments are made from exceptionally durable special metal alloy, and its wear resistance is enhanced by a protective micro membrane coating.

SHARPNESS & COMFORT

LM Sharp Diamond™ instruments with LM-ErgoSense™ handle are especially suitable for clinicians who use hand instruments frequently and want to minimize the time spent maintaining dental instruments. These instruments combine optimal characteristics of superior sharpness, tactile sensitivity and comfort.

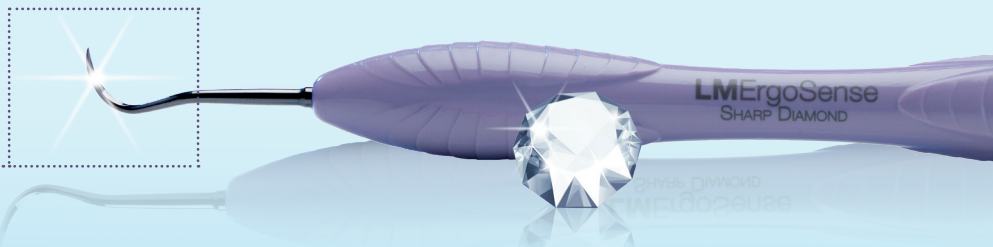
BETTER INSTRUMENTS, BETTER OUTCOMES

LM Sharp Diamond™ instruments are well-suited for all forms of scaling. These instruments retain their original functionality, size and shape throughout their lifetime. The time saved from sharpening can be used for productive work and promotion of health. Choose sharp and work efficiently.

“ LMSharpJack - what a great instrument!

It has the best features you could wish for. It's very narrow and thin which allows you to enter everywhere, even in the smallest areas. Perfect that the tip is so long so you can get in between molars. My favorite without competition, I'm in love!"

Malin, Registered Dental Hygienist, Sweden



Sharpen free instruments

Sickle Scalers

NEW

The new LM-SharpJack instrument features extra long, thin blades for convenient interproximal access presenting the most popular scaler design in US. The shank is optimally angled to universally adapt in anterior and posterior regions.

LM-SharpJack SD

- Anterior/posterior scaler
- Thin dual-edged blades for easy and efficient interproximal access

LMErgoSense

LM 315-316SD ES

Scan the QR for more info & video at www.lm-dental.com/SharpJack



NEW

Scaler LM Nebraska 128 SD

- Instrument for the anterior interproximals

LMErgoSense

LM 128-128SD ES



Micro Sickle SD

- Anterior/posterior scaler
- Delicate working end
- Elongated shank
- Ideal for tight interproximal surfaces

LMErgoSense

LM 301-302SD ES



Mini Sickle SD

- Universal scaler
- For all tooth surfaces
- Fine, slightly angled blade

LMErgoSense

LM 311-312SD ES



Sickle LM23 SD

- Posterior scaler
- Shorter blades and longer lower shank than in Mini Sickle

LMErgoSense

LM 313-314SD ES



Scaler H6-H7 SD

- For all tooth surfaces
- Longer shank and smaller lateral bending than in LM-SharpJack

LMErgoSense

LM 146-147SD ES

Universal Curettes

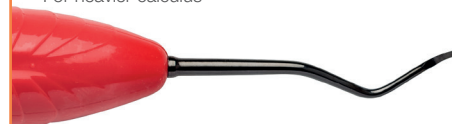


Columbia 4L-4R SD

- For incisors, canines and premolars
- For heavier calculus

LMErgoSense

LM 219-220SD ES



Barnhart 5-6 SD

- For molars
- Shorter lower shank

LMErgoSense

LM 227-228SD ES

LM Dual Gracey™ for EASY INSTRUMENTATION

LM Dual Gracey™ combines the benefits of a universal curette and a Gracey curette in one. These instruments are designed for the removal of supra and subgingival calculus from all tooth surfaces. The LM Dual Gracey™ concept, combining Gracey curettes and universal curettes, enables fewer instruments to be used. The traditional set of four Graceys may be replaced with only two LM Dual Gracey™ instruments: Syntette™ and Syntette™ Anterior.

SIMPLY CLEVER TIP DESIGN

Each LM Dual Gracey™ tip has two elliptical cutting edges - a mesial and a distal edge. This design allows for treatment of both mesial and distal tooth surfaces. The lower shank is kept parallel to the tooth surface while scaling, of particular convenience when accessing subgingivally. LM Dual Graceys™ are suitable for vertical, horizontal and oblique scaling techniques.



LM Dual Gracey™ instruments have rounded tip with two cutting edges.



LMDualGraceys™

- The original LM Dual Gracey™ curette, a combination of universal curette and Gracey 11/12 and Gracey 13/14 curettes
- For removal of supra and subgingival calculus in premolar and molar areas
- For all tooth surfaces
- Mini model is excellent in narrow and deep pockets



Syntette™ SD

LMErgoSense
LM 215-216SD ES



Mini Syntette™ SD

LMErgoSense
LM 215-216MSD ES

NEW

- New Syntette™ Anterior is completing the set of LM Dual Graceys™
- A combination of universal curette and Gracey 1/2 and Gracey 7/8 curettes
- For removal of supra and subgingival calculus in premolar and anterior areas
- For all tooth surfaces
- Mini model is excellent in narrow and deep pockets



Syntette™ Anterior SD

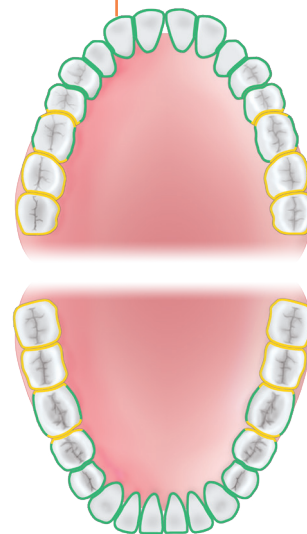
LMErgoSense
LM 275-276SD ES



Mini Syntette™ Anterior SD

LMErgoSense
LM 275-276MSD ES

Recommendation for
optimal treatments



Scan the QR for more info &
video at [www.lm-dental.com/
DualGracey](http://www.lm-dental.com/DualGracey)



Gracey Curettes

- For incisors and premolars



Gracey 1/2 SD

LMErgoSense

LM 201-202SD ES



Mini Gracey 1/2 SD

LMErgoSense

LM 201-202MSD ES

- For premolars and molars
- For buccal and lingual surfaces



Gracey 7/8 SD

LMErgoSense

LM 207-208SD ES



Mini Gracey 7/8 SD

LMErgoSense

LM 207-208MSD ES

- For premolars and molars
- For mesial surfaces



Gracey 11/12 SD

LMErgoSense

LM 211-212SD ES



Mini Gracey 11/12 SD

LMErgoSense

LM 211-212MSD ES

- For premolars and molars
- For distal surfaces



Gracey 13/14 SD

LMErgoSense

LM 213-214SD ES



Mini Gracey 13/14 SD

LMErgoSense

LM 213-214MSD ES



Mini Gracey 15/16 SD

- For molars' mesial surfaces
- Blade shank more sharply angled than Mini Gracey 11/12 for better access

LMErgoSense

LM 245-246MSD ES



Mini Gracey 17/18 SD

- For molars' distal surfaces
- Blade shank more sharply angled than in Mini Gracey 13/14 for better access

LMErgoSense

LM 247-248MSD ES



It's great that I don't need to waste my time on sharpening any longer! Since the LM Sharp Diamond™ instruments are totally sharpen free, I can concentrate on the clinical work. I can remove calculus with controlled strokes using extremely light grip. The long-lasting sharpness really makes a difference!"



Anna, Registered Dental Hygienist, USA

CHOOSE SHARP.

Opposites attract. This holds true with high-quality periodontal instruments. Optimally they are razor sharp, extremely hard, yet smooth and light. A new micro coating made using modern Physical Vapor Deposition (PVD) technology enables LM to create LM Sharp Diamond™ instruments combining these features optimally: they are completely sharpen free, tough but refined.



Scan the QR for more info & video at www.lm-dental.com/sharpdiamond

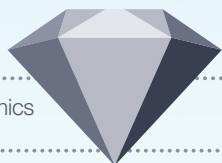


SHARPEN FREE MICRO COATING

Savings of time & money

Highest rated ergonomics with sensational grip*

You will enjoy full control and improved tactile sense, while effectively removing the calculus.



Long-lasting superior sharpness

Improved productivity & clinical results

DIAMOND-LIKE FEATURES

Sharpen free



Superior sharpness



Highest rated ergonomics



Minimum maintenance



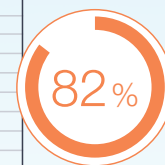
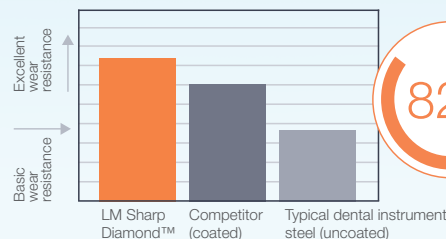
HARDNESS

Hardness contributes to the durability of the instrument. Sharp Diamond reaches hardness of over 63 on Rockwell scale.

HARDNESS OVER

63
HRC

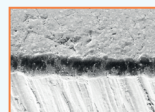
WEAR RESISTANCE**



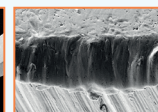
decrease in wear compared to typical dental hand instrument material.



Cutting edge of the LM Sharp Diamond™ curette and the magnification of the edge after the test.



Cutting edge of a typical non-coated curette and the magnification of the edge after the test.



Reference studies: *(1) Sormunen E., Nevala N: Evaluation of ergonomics and usability of dental scaling instruments; Dental scaling simulation and Field study, part III. Finnish Institute of Occupational Health, LM-Instruments Oy. (2) Nevala N, Sormunen E, Remes J, Suomalainen K: Ergonomic and productivity evaluation of scaling instruments in dentistry. The Ergonomics Open Journal 2013; 6, 6-12. ** Leppäniemi J. et al: The influence of PVD coatings on the wear performance of steel dental currettes. Key Engineering Materials Vol. 674 (2016), 289-295.

LM Dental

LM-Instruments Oy

Norrbyn rantatie 8 | FI-21600 Parainen | Finland

Tel. +358 2 4546 400

info@lm-dental.com | www.lm-dental.com

Exclusively distributed by Curion



2571 Smith Street Richmond, BC., V6X 2J1 Canada

EN: 1.800.667.8811 | FR: 1.800.211.1200

curion.ca | wecare@curion.ca