

Superior Bonds begin with

# Z-PRIME™ *plus*+

Zirconia - Alumina - Metal Primer

Z-PRIME™ PLUS



Rx Only

# The First Ever Dedicated Zirconia Primer...



BISCO's Z-PRIME™ Plus is a single-component primer used to enhance adhesion between indirect restorative materials and composite resin cements. It can be used as a surface treatment for zirconia and alumina metal oxide ceramics, as well as other types of metals/alloys, composites and endodontic posts. Z-PRIME Plus has been specifically formulated to provide high bond strengths to resin cements used in both self cure and light cure modes.

- The only primer with proven chemical bond to zirconia\*
- Unparalleled bond strengths to zirconia, alumina and metal restorations
- Compatible with light-cured or dual-cured resin luting cements
- Convenient, single bottle delivery offers ease of dispensing
- Significantly enhances bond strengths of other resin cements\*

## Do You Need To Bond To Zirconia?



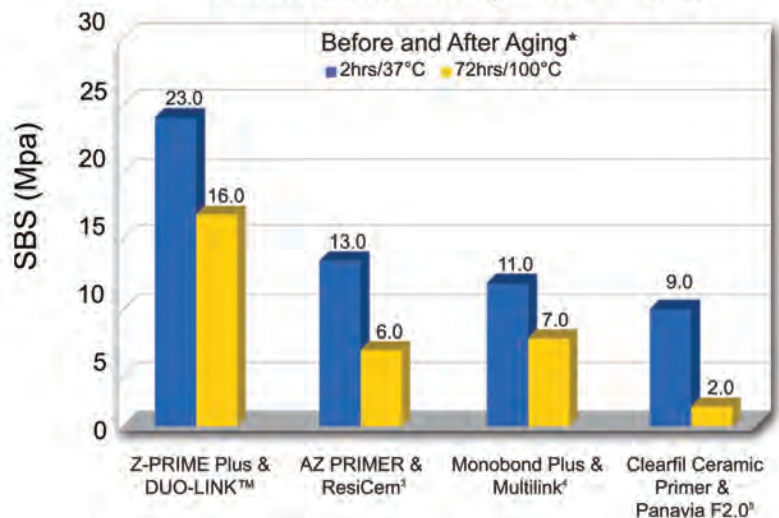
### • Z-PRIME Plus enhances adhesion to:

- ✓ Zirconia crowns, onlays, & bridges (eg. BruxZir<sup>1</sup>, Zir-MAX<sup>2</sup>, etc.)
- ✓ Metal alloys & alumina

### • Literature Supports Bonding For:

- ✓ Short crown preps
- ✓ Decreasing the need for excessive tooth preparation
- ✓ Tooth preparations that are compromised
- ✓ Zirconia-based Maryland bridges

Shear Bond Strength to Zirconia



***Z-PRIME Plus significantly enhances bond strengths to zirconia, alumina and metal substrates better than other primers on the market***

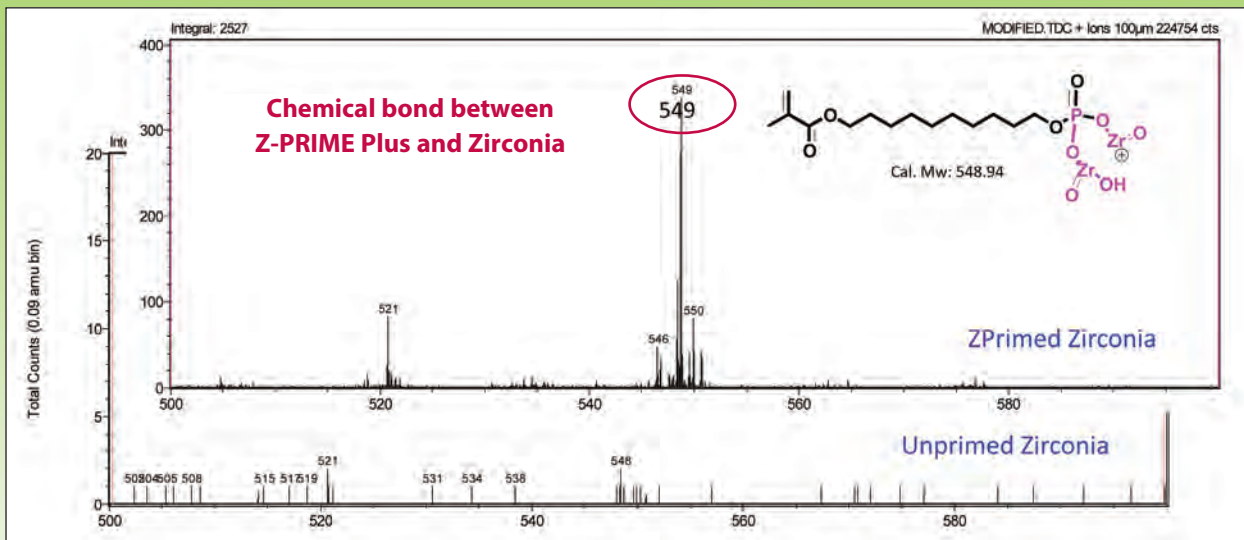
\* BISCO, Inc. Data

Registered trademark of: <sup>1</sup> Glidewell Laboratories, <sup>2</sup> Burbank Dental Lab,

<sup>3</sup> Shofu Dental Corporation, <sup>4</sup> Ivoclar Vivadent, Inc, <sup>5</sup> Kuraray America Inc

# Confidence in Indirect Adhesion...Chemically Proven!!!

## Chemical Bond to Zirconia SIMS Spectrum



SIMS data of zirconia with (Z-Primed zirconia) and without (unprimed zirconia) Z-PRIME Plus. A fragmentation with mass of 549 in Z-Primed zirconia indicates a chemical bond (P-O-Zr) was formed between the zirconia and Z-PRIME Plus.

Chen L, Suh B. Zirconia-Bonding-1: Chemical Bond Formation between ZPRIME and Zirconia Ceramics. J Dent Res 90 (Spec Iss A): #0371, 2011

## YOUR PATIENTS DESERVE SUPERIOR BONDS



Prepared multiple-unit bridge.



After cleaning internal surface with ZirClean™, apply a thin layer of Z-PRIME Plus to the zirconia bridge. Air dry for 3 to 5 seconds.



Apply two separate coats of ALL-BOND UNIVERSAL®, scrubbing the preparation with a microbrush for 10-15 seconds per coat. Do not light cure between coats.



Air dry to remove solvent and light-cure for 10 seconds.



Fill internal surface of the restoration with DUO-LINK UNIVERSAL™ resin cement and immediately seat restoration.



Final restoration.

Dentistry courtesy of Dr. Ross Nash





## Restoration Cleaner

ZirClean is a cleaning gel designed for the non-abrasive cleaning of the bonding surfaces of zirconia (and other prosthetic restorations) after intraoral try-in. ZirClean helps to achieve reliable adhesive cementation results by removing the phosphate contamination of zirconia (as well as ceramic and metal restoration surfaces) that occur during try-in.\*

### PRODUCT HIGHLIGHTS

- Delivery system offers improved ease-of-use
- Easy placement and clean up
- Helps achieve reliable adhesive cementation results\*
- Contaminants such as saliva can be removed to help achieve better bond strength after try-in\*



### CLINICAL SIGNIFICANCE

The use of ZirClean will help to achieve reliable cementation results with zirconia restorations after intraoral try-in.\*

### ORDERING INFORMATION



#### Z-PRIME PLUS BOTTLES

1 Bottle Z-PRIME Plus, Instructions

**Z-PRIME Plus (4ml) Bottle**

**B-6001P**

**Z-PRIME Plus (2ml) Bottle**

**B-6002P**

#### ZirClean SYRINGE

**B-7351P**

1 Syringe (5g), 2 Disposable Syringe Tip Pack (15pk),  
Instructions



Exclusively distributed by Curion

**curion.ca | EN: 1.800.667.8811 | FR: 1.800.211.1200**



\* As compared to untreated samples. Data on file.