

# Garrison®

**2026**  
Product  
Catalogue



MATRIX SYSTEMS

Quad Matrix System™ . . . . .3  
Strata-G™ . . . . .8  
3D Fusion™ . . . . .9  
Reel Matrix™ . . . . .16-17  
Deep Margin Elevation . . . . .17  
Slick Bands™ Tofflemire-style Matrices . . . . .18-19

Fusion™ Anterior . . . . .20-21  
VariStrip™ Anterior . . . . .26-27  
Blue View™ Cervical Matrices . . . . .28

RINGS

Quad Matrix System™ . . . . .4  
Quad, Strata-G, 3D Fusion™, 3DXR, . . . . .5

BANDS

NiTin™ . . . . .10  
Strata-G™, Firm, Fusion, SXR . . . . .11  
SM, Gold, M, B . . . . .12

WEDGES

Quad Matrix System™, Strata-G™ . . . . .14  
Fusion, A+, G-Wedge™, WedgeWands™ . . . . .15

PRE-WEDGE SHIELD

FenderWedge® . . . . .15

INTERPROXIMAL FINISHERS

FitStrip™ . . . . .33-35

CURING LIGHT

Loop™ . . . . .32-33

POLISHING SYSTEMS

Rally™ . . . . .36-37  
eZr™ . . . . .38-39

MATRIX BAND FORCEPS

Composi-Tight® Matrix . . . . .42

RING PLACEMENT FORCEPS

Premier . . . . .43  
Original . . . . .43  
Universal . . . . .43

CONTACT FORMERS

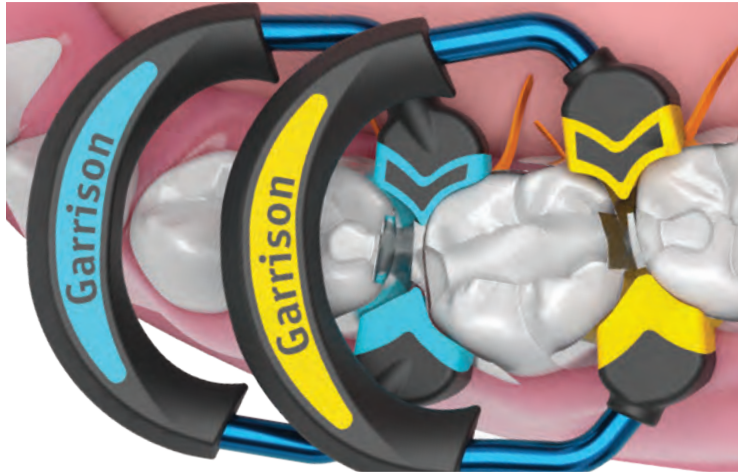
Perform™ . . . . .29

COMPOSITE INSTRUMENT

Multi-Function Non-Stick . . . . .44  
Standard Non-Stick. . . . .45

INFORMATION PAGES

Quad Matrix System™ . . . . .2-4  
Cases . . . . .6, 7, 13, 20, 29, 32, 40, 41  
CE Information . . . . .28  
Matrix Selection Guide . . . . .24-25  
Order Form . . . . .46  
Ordering Information . . . . .47  
Guarantee . . . . .back cover



## Advanced design for complex cases.

### Long lasting rings - flash-free results

Drawn-wire nickel titanium produces lasting separating pressure plus ultra-adaptive Soft-Face™ tips for reduced flash.

### Enhanced cervical seal

The split-tip Quad wedges combined with the driver tip on the Quad rings produce an independent cervical seal on both sides of back-to-back restorations.

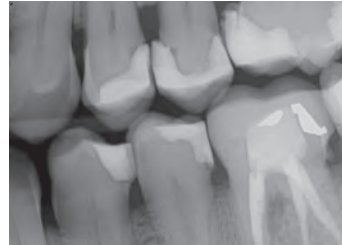
### Quadrant workflow

Asymmetrical tip design improves ring fit, matrix stabilization, and tooth separation, all of which are key for achieving optimal results on challenging multiple-tooth and back-to-back Class II preparations.

# Quad Matrix System™

## Go beyond basic Class IIs with Quad.

While it's great for everyday standard Class IIs, the Quad Matrix System is named for its unique ability to streamline more complex cases. Faced with an entire quadrant of Class IIs like this, you need unique material designs and proven techniques to deliver efficient results you can be proud of.



When a case like this sits down in your chair, you need Quad.

## Clinician Designed – Garrison® Engineered.



When Dr. Matt Burton, DDS, a chair-side dentist, envisioned a better way to tackle complex Class II restorations—like back-to-back cases, deep lesions, and multi-tooth restorations—Garrison's expertise in matrix systems and highly engineered products made it a reality. This innovative system, backed by thousands of hours of clinical field validation, overcomes challenges with precision and efficiency.



Products Rated Highly by CR Scientists and Clinical Evaluators

### Quad Matrix System



Garrison Dental Solutions  
\$688/Intro Kit

## The Award Winning Sectional Matrix System Company



## Quad Sectional Matrix System Intro Kit

### QR-KHF-10

- 2 Quad rings (1 each Blue orientation)
- 50 Firm bands (10 each)
- 50 Dead-soft bands (10 each)
- 80 Quad wedges (20 each)
- 10 Varistrip
- 12 Rally polishers
- 1 FXP01 ring forceps

## Quad Sectional Matrix System Professional Kit

### QR-KHF-11

- 4 Quad rings (1 each Blue and Orange orientation)
- 50 Firm bands (10 each)
- 50 Dead-soft bands (10 each)
- 80 Quad wedges (20 each)
- 10 Varistrip
- 12 Rally polishers
- 1 Ring forceps
- 1 Band forceps
- 1 Multi-function instrument



Techniques for success  
See Quad cases, technique videos, and frequently asked questions by following this link.

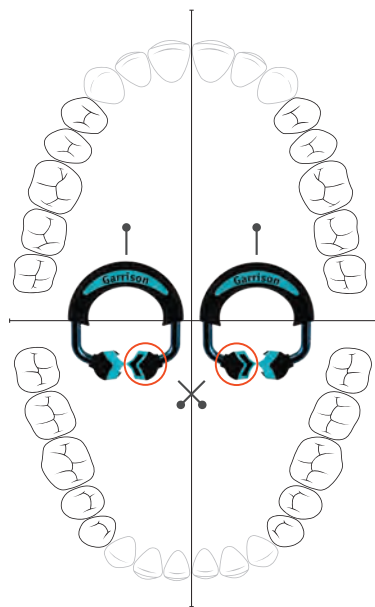


# Quad

All-new asymmetrical **Quad Ring** design with specialized 'driver-tip' maximizes Quad Wedge adaptation and cervical seal.



- Adapts the split-tip Quad wedge to both sides of the embrasure simultaneously
- Seals both cervical margins
- Drives deeper for improved matrix band adaptation and tooth separation
- Soft-Face™ design for superior flash reduction



## Maximum adaptation

The right and left driver tips of the Quad system allow you to select the ideal ring for each quadrant and for each restorative challenge.

Tall rings (orange) with both left and right-side driver tips are available for simplified stacking.



QR01 - 4/pk  
1/ea Universal & Tall (Q400 L/R, Q500 L/R)



Q400 - 2/pk  
Universal – Left Driver Tip    Universal – Right Driver Tip



Q500 - 2/pk  
Tall – Left Driver Tip    Tall – Right Driver Tip

## Strata-G™

Smaller, easier to open and lasts longer



SG400  
Universal/Short Ring  
2/pk

SG500  
Tall Ring  
2/pk

SG600  
Wide Prep Ring  
2/pk



SGR01 - 3/pk  
1 each SG400, SG500,  
SG600

## Composi-Tight® 3D XR™

Soft-Face™ technology and Dynamic Tip Angle™



3D XR  
Soft-Face™ Extra Retention Rings  
2/pk

## 3D Fusion™

Soft-Face™ silicone tips



FX400  
Short Ring  
2/pk

FX500  
Tall Ring  
2/pk

FX600  
Wide Prep Ring  
2/pk

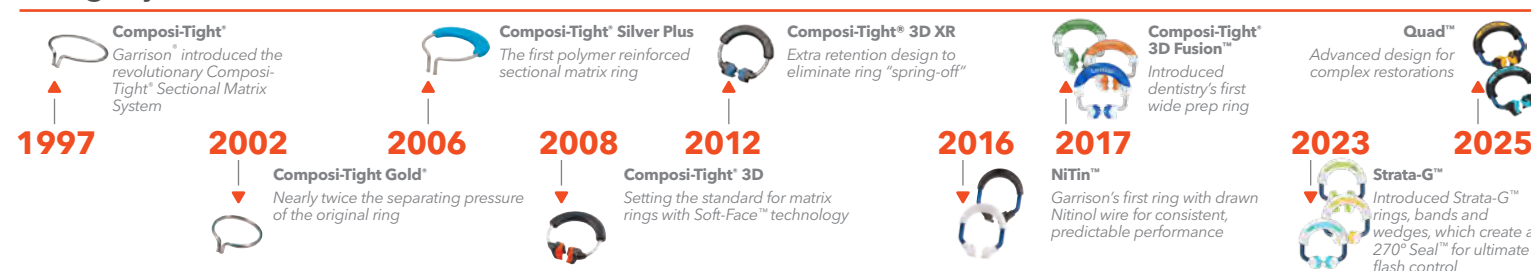


FXR01  
1 each FX400, FX500, FX600  
3/pk



For availability and pricing of earlier Garrison sectional matrix rings, please visit our website.

## A legacy of innovation



# QUAD MATRIX SYSTEM™ – CASE STUDIES



Dennis Marangos  
BSc, DDS, DABCDMS, DABCP, FAACP,  
FAGD

## Predictable Class II Back-to-Back Composite Restorations using the Quad Matrix System™

A 38-year-old patient presented with recurrent decay on the distal of tooth #14 and the mesial of tooth #15. Both lesions were moderately sized and required replacement of old composite restorations. The treatment plan included direct composite restorations using a total-etch adhesive protocol.



Figure 1: Initial examination reveals adjacent Class II carious lesions requiring restoration.



Figure 2: A rubber dam ensures a dry field, preventing contamination and improving visibility during the procedure.



Figure 3: Removal of carious tissue and old restorations, creating clean preparations ready for restoration.



Figure 4: Total Etch Technique involves etching enamel for 15-20 seconds and dentin for 10-15 seconds, followed by thorough rinsing. Re-wet the preparation with G5.



Figures 5-6: Simultaneous placement facilitates the restoration of back-to-back Class II lesions with proper contact and contour.



Figure 7: Composite is placed in bulk, as there are no limits on increment depth, ensuring proper adaptation of the proximal box.



Figures 8-9: Margins were refined using fine-grit diamond burs and carbide finishing to enhance precision and smooth transitions.



Figures 10-11: A final polish was achieved through a multi-step polishing system designed to deliver optimal smoothness and luster.



Figure 12: Restorations exhibit tight proximal contacts, smooth surfaces, and natural anatomy, ensuring function and esthetics.



Victor Henarejos-Domingo  
DDS, MSc

## Back-to-Back Class II Restorations with the Quad Matrix System™

In this clinical case report, Dr. Victor Henarejos-Domingo demonstrates the restoration of back-to-back Class II cavities with composite on maxillary premolars using the Quad Matrix System.



**Figure 1.**  
The Quad Matrix System was placed and adapted using two Firm Matrix Bands sectional matrices (FXH150) and the blue pressure ring simultaneously. The flexible nature of the wedge material, combined with the driver tip of the ring, effectively secures the matrix band in the most apical area without causing deformation. Additionally, the specific design of the wedge, which conforms to the natural "V"-shaped embrasure space, ensures proper sealing between the matrices and the cavities—a critical step when sealing two separate teeth simultaneously. Note how placing the two matrices simultaneously facilitates achieving an ideal anatomic distribution.



**Figure 2.**  
Placement and adaptation of the Quad Matrix System using a Firm Matrix Band sectional matrix (FXH150) and the blue pressure ring to restore the distal cavity of the maxillary left second premolar, following the standard procedure for a Class II restoration.



**Figure 3.**  
Occlusal view of the final restorations after the final polishing and finishing.

## QUAD RESOURCE CENTER

The Quad Matrix System™ resource page answers common questions about the Quad System to help you maximize efficiency and optimize results using the system.

- Videos
- Cases

For more case studies, go to the Learning Center tab on the website.



[garrison.dental/QuadResourceCenter](http://garrison.dental/QuadResourceCenter)

Strata-G™

Faster—more predictable—flash control



**SGR-KSH-11 kit contains:**

- 1 Universal/Short Ring (blue)
- 1 Tall Ring (orange)
- 1 Wide Prep Ring (green)
- 50 Assorted Matrix Bands
- 50 Firm Matrix Bands
- 10 VariStrips™
- 80 Assorted Ultra-Adaptive Wedges
- 12 Assorted Rally™ Polishers (pg 36-37)
- 1 Ring Placement Forceps (pg 43)
- 1 BFA-1 Band Placement Forceps (pg 42)
- 1 TN009 Multi-Function Instrument (pg 44)



**Item**

- SGR-KSH-11 (shown)
- SGR-KSH-10 (BFA-1 and TN009 not in kit)
- SGR-KSH-14 (TN009 not in kit)



Eduard Epure  
DMD, MS

**Class IIs Next to the Canine with Strata-G™**

In this clinical case report, Dr. Eduard Epure demonstrates the restoration of a Class II carious lesion beside a canine with the Strata-G™.



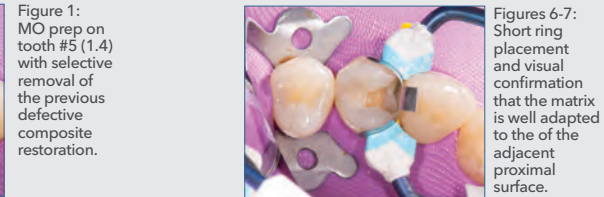
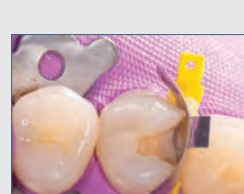
Figure 1: MO prep on tooth #5 (1.4) with selective removal of the previous defective composite restoration.



Figures 2-3: Matrix placement: a gap is visible until the wedge is placed.



Figures 4-5: Wedge placement and good seal obtained.



Figures 6-7: Short ring placement and visual confirmation that the matrix is well adapted to the of the adjacent proximal surface.



Figure 8: The ring shape enables stable placement on the mesial of the first premolar, which is usually a challenging situation for sectional matrix systems.



Figures 9-10: Composite restoration immediately after insertion and ring removal.



Figure 11: Buccal and lingual embrasures are anatomically shaped and require almost no finishing.



Figure 12: Minor finishing is required on the mesio-buccal embrasure to create a round transition between the composite and emergence profile.



Figures 13-14: After finishing and polishing.



3D Fusion™

When design and function come together, you get Fusion!



**FXR-KFF-11 kit contains:**

- 1 Short Ring (blue)
- 1 Tall Ring (orange)
- 1 Wide Prep Ring (green)
- 70 Assorted Full Curve Non-Stick Matrix Bands
- 80 Assorted Ultra-Adaptive Wedges
- 4 Assorted FenderWedges®
- 12 Assorted Rally™ Polishers (pg 36-37)
- 1 Ring Placement Forceps (pg 43)
- 1 BFA-1 Band Placement Forceps (pg 42)
- 1 TN009 Multi-Function Instrument (pg 44)



**Item**

- FXR-KFF-11 (shown)
- FXR-KFF-10 (BFA-1 and TN009 not in kit)
- FXR-KFF-14 (TN009 not in kit)

For more kit configurations and systems, go to [garrisondental.com](http://garrisondental.com)

toll free 888.437.0032 | [www.garrisondental.com](http://www.garrisondental.com)

# Garrison® offers a comprehensive variety of **Matrix Bands** to accommodate a wide range of clinical scenarios.

## Firm Bands for superior strength and flexibility

Firm Bands are crafted from a proprietary stainless-steel alloy, offering exceptional strength and flexibility.

0.0015" thin!

- Resists deformation
- Perfect for
  - Back-to-back
  - Deeper restorations
  - Unbroken contacts
  - Extra wide preps



## Dead-Soft Bands for enhanced adaptation

The full curve design of these bands allows for optimal adaptation to the tooth surface, ensuring complete coverage of the preparation.

0.0016" thin!

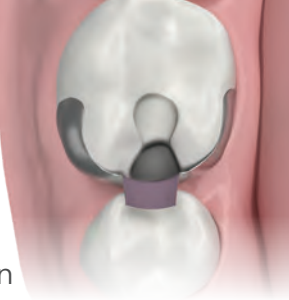
- Easily customizable
- Perfect for
  - Single Class IIs
  - General restorations



## Introducing NiTin™ Matrix Bands

Similar in dimension to the 3D Fusion™ Full Curve Bands, but slightly stiffer to improve ease of placement and are a good choice for a full curve band.

	Pediatric	Premolars	Premolars with deep cervical preps	Premolars and small molars	Molars	Molars with deep cervical preps			
NTG Series	NiTin™ Full contour matrix bands for ideal anatomy.						Item	Standard (-M) Qty.	Bulk Qty.
	thickness 0.0015"						NTG100	25	50
	height						NTG150	25	50
							NTG175	25	50
							NTG200	25	50
							NTG200	25	50
							NTG300	25	50



## Band Comparison Chart







	Pediatric	Premolars	Premolars with deep cervical preps	Premolars and small molars	Molars	Molars with deep cervical preps			
SG Series	Strata-G™ matrix bands with optimized marginal ridge						Item	Standard (-M) Qty.	Bulk Qty.
	thickness 0.0016"						SG050	50	100
	height						SG100	50	100
							SG175	50	100
							SG200	50	100
							SG300	50	100
FXH Series	Composi-Tight® 3D Fusion™ Firm matrix bands with eZ-Place™ technology for easier placement.						Item	Standard (-M) Qty.	Bulk Qty.
	thickness 0.0015"						FXH100	50	100
	height						FXH150	50	100
							FXH175	50	100
							FXH200	50	100
							FXH300	50	100
FX Series	Composi-Tight® 3D Fusion™ Full Curve Bands have non-stick coating and an occlusal placement tab.						Item	Standard (-M) Qty.	Bulk Qty.
	thickness 0.0016"						FX100	50	100
	height						FX150	30	60
							FX175	50	100
							FX200	50	100
							FX300	30	60
SXR Series	Slick Bands™ XR Matrices have non-stick coating and Grab-Tabs™ for easier placement.						Item	Standard (-M) Qty.	Bulk Qty.
	thickness 0.0016"						SXR100	50	100
	height						SXR150	30	60
							SXR175	50	100
							SXR200	50	100
							SXR300	30	60

To order standard packs, add a -M after the item #.

toll free 888.437.0032 | [www.garrisondental.com](http://www.garrisondental.com)

Band Comparison Chart

SM Series

	Pediatric	Premolars	Premolars with deep cervical preps	Premolars and small molars	Molars	Molars with deep cervical preps
Slick Bands™	Slick Bands™ Matrices have non-stick coating.					
thickness 0.0016"						
height	SM050 3.2 mm w/ext 4.2 mm	SM100 4.6 mm	SM150 3.8 mm w/ext 5.4 mm	SM175 5.5 mm	SM200 6.4 mm	SM300 6.4 mm w/ext 8.6 mm







Item	Standard (-M)	Bulk
SM050	NA	60
SM100	50	100
SM150	30	60
SM175	50	100
SM200	50	100
SM300	30	60

AU Series

Composi-Tight Gold®	The Gold bands are the same as the Composi-Tight® bands.					
thickness 0.0015"				NA		
height	AU050 3.2 mm w/ext 4.2 mm	AU100 4.6 mm	AU150 3.8 mm w/ext 5.4 mm	NA	AU200 6.4 mm	AU300 6.4 mm w/ext 8.6 mm

Item	Standard (-M)	Bulk
AU050	25	50
AU100	50	100
AU150	25	50
AU200	50	100
AU300	25	50

M Series

Composi-Tight®	Composi-Tight® bands are contoured in 3 dimensions to provide an accurate contact at the tooth's natural height of contour.					
thickness 0.0015"						
height	M050 3.2 mm w/ext 4.2 mm	M100 4.6 mm	M150 3.8 mm w/ext 5.4 mm	M175 5.5 mm	M200 6.4 mm	M300 6.4 mm w/ext 8.6 mm

Item	Standard (-M)	Bulk
M050	25	50
M100	50	100
M150	25	50
M175	50	100
M200	50	100
M300	25	50

B Series

Composi-Tight® Original	The original bands have a slightly shorter length.					
thickness 0.0015"				NA		
height	B050 3.2 mm w/ext 4.2 mm	B100 4.6 mm	B150 3.8 mm w/ext 5.4 mm	NA	B200 6.4 mm	B300 6.4 mm w/ext 8.6 mm

Item	Standard (-M)	Bulk
B050	25	50
B100	50	100
B150	25	50
B200	50	100
B300	25	50

To order standard packs, add a -M after the item #.



Case using Firm Matrix Bands

Dr. Anand Narvekar (Mumbai, India) utilized Garrison® Firm Bands for deep margin elevation in this challenging onlay case.



**Figure 1.** FXH300 large molar band with extension was placed. The wedge was wrapped with multiple layers of teflon tape to sufficiently increase its size to allow it to seal the cervical portion of the matrix band in this extremely wide interproximal space.



**Figure 2.** Cervical area was built up with multiple layers of composite.



**Figure 3.** The process was repeated for the adjacent molar. The stiff nature of Firm Bands allows apical pressure to be applied to the band without deformation of the matrix. It can be seated deeper than dead soft matrices for these types of procedures.

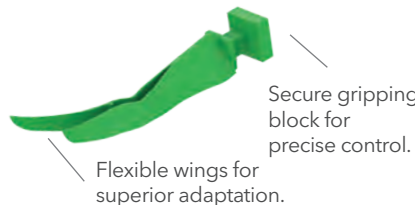


**Figure 4.** One-week post-bonding of onlays.

To see more cases, go to the Learning Center at [garrisondental.com/learning](http://garrisondental.com/learning)

# Quad

The **Quad Wedge** utilizes a revolutionary split-tip design

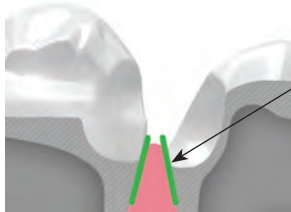


Split-tip easily adapts bands to both cervical margins!

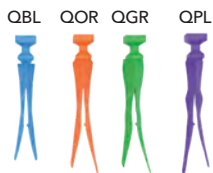
Gently slides alongside papilla and seals deeper for a more natural emergence profile— even with mismatched depths.

Seal those concavities

Quad Wedges include the highly specialized anatomical purple wedge designed for an improved seal when presented with a root concavity.



Three sizes plus the special anatomically shaped purple



- Prevents flash and contamination
- Improves matrix adaptation



Description	Item	Qty.	Price
Quad Wedge Kit	QK4	400	\$272
Quad Wedge Kit	QK4-M	200	\$142
Refills	Item	Standard Qty.	Bulk Qty.
Small Blue	QBL-M	50	QBL 100
Medium Orange	QOR-M	50	QOR 100
Large Green	QGR-M	50	QGR 100
Anatomical Purple	QPL-M	50	QPL 100

## 3D Fusion™ Ultra-Adaptive Wedges

This extremely popular wedge uses Soft-Face™ adaptive materials, a firm inner core and advanced mechanical features to prevent wedge back-out and firmly seal cervical margins.



Description	Item	Qty.	
Composi-Tight® 3D Fusion™ Wedge Kit	FXK4	400	
Composi-Tight® 3D Fusion™ Wedge Kit	FXK4-M	200	
Refills	Item	Standard Qty.	Bulk Qty.
X-Small Yellow	FXYL-M	50	FXYL 100
Small Blue	FXBL-M	50	FXBL 100
Medium Orange	FXOR-M	50	FXOR 100
Large Green	FXGR-M	50	FXGR 100





## Strata-G™ Wedges

The hollow underside and wider design of Strata-G wedges allow them to sit lower interproximally. They feature a similar soft coating and retentive fins as the 3D Fusion wedges listed above.



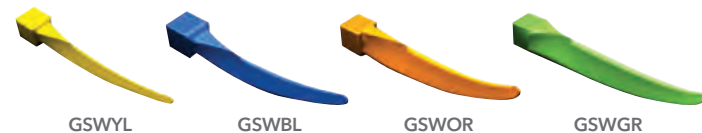
Description			Item	Qty.
Strata-G™ Wedge Kit			SGK4	400
Strata-G™ Wedge Kit			SGK4-M	200
			Standard	Bulk
Refills	Item	Qty.	Item	Qty.
X-Small Yellow	SGYL-M	50	SGYL	100
Small Blue	SGBL-M	50	SGBL	100
Medium Orange	SGOR-M	50	SGOR	100
Large Green	SGGR-M	50	SGGR	100



For more Garrison wedge options, scan the QR code on this page.

## G-Wedge™

Firm plastic wedges with gently rounded edges to protect the papilla.



Description			Item	Qty.
G-Wedge™ Kit			GWK4	400
		Standard		Bulk
Refills	Item	Qty.	Item	Qty.
X-Small Yellow	GSWYL	100	GWYL	300
Small Blue	GSWBL	100	GWBL	300
Medium Orange	GSWOR	100	GWOR	300
Large Green	GSWGR	100	GWGR	300

## WedgeWands®

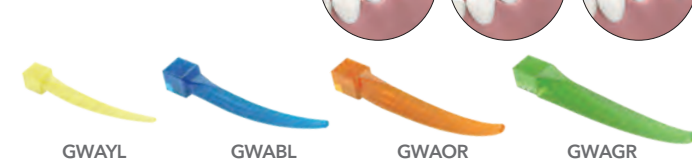
The original wedge-on-a-stick! Easy to place, the firm plastic wedge and gently rounded edges protect the papilla.



Description			Item	Qty.
WedgeWands® Kit			WK4	400
			Standard	Bulk
Refills	Item	Qty.	Item	Qty.
X-Small Yellow	SWYL	100	WYL	300
Small Blue	SWBL	100	WBL	300
Medium Orange	SWOR	100	WOR	300
Large Green	SWGR	100	WGR	300

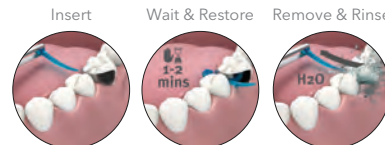
## A+Wedge®

Controls gingival bleeding.



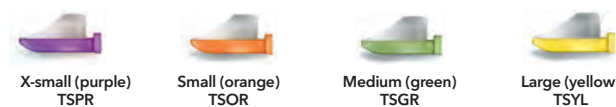
Description	Item	Qty.
A+Wedge® Kit	GWAK4	200
Refills	Item	Bulk Qty.
X-Small Yellow	GWAYL	100
Small Blue	GWABL	100
Medium Orange	GWAOR	100
Large Green	GWAGR	100

Controls gingival bleeding with an aluminum sulfate coating that has an astringent effect on the gingiva, improves clarity of restoration area, and eliminates need to apply an astringent separately.



## FenderWedge®

Protects the adjacent tooth during preparation.



Description			Item	Qty.	
FenderWedge® Kit			TSK01	80	
Refills		Standard		Bulk	
	Item	Qty.	Item	Qty.	
	X-Small Purple	TSPR-M	30	TSPR	60
	Small Orange	TSOR-M	30	TSOR	60
	Medium Green	TSGR-M	30	TSGR	60
Large Yellow	TSYL-M	30	TSYL	60	

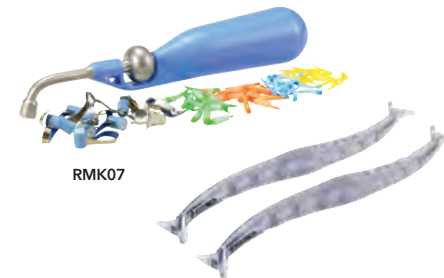
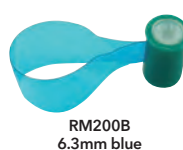
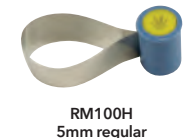
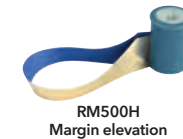
# ReelMatrix

Your best replacement for old-school tofflemire-style and other retainerless systems

**1 Real Easy:**  
The reels pop into the handle without any fuss! Press the reel into the handle and retract the grippers to lock the reel in place. Plus, if you use the regular matrices (yellow hubs) they can be easily pushed through contacts.

**2 Real Tight:**  
Tight contacts and excellent contour are what Reel Matrix is all about. These thin matrices are pre-contoured in three dimensions and when combined with anatomical wedges and separator rings, the result is amazingly tight contacts at the natural height of contour.

**3 Real Fast:**  
Pre-loaded reels mean you can just lock them in and go. The retainerless design greatly speeds up quadrant work while improving visibility and patient comfort. Add a SG500 separator ring and you virtually eliminate buccal and lingual flash.



Margin elevation band is .002" thin. Super-thin dead-soft bands are .0012" thin. Regular bands are .0015" thin and can be placed through existing contacts. A Blue View cure-through option at .0029" thin is available if you prefer trans-enamel curing.

## ReelMatrix & Deep Margin Elevation

Item	Description
DME-01	Deep Margin Elevation Kit 50 RM500H Margin Elevation band reels 1 RMH-100 ReelMatrix™ tensioning instrument 5 FXH150 3D Fusion™ Firm bands 10 FXH200 3D Fusion™ Firm bands 20 FXH300 3D Fusion™ Firm bands 80 3D Fusion™ wedges; 20 each size

RMK07	Kit Contains 80 matrices (20 RM500H, 10 ea. RM100D, RM200D, RM100H, RM200H, RM100B, RM200B) 60 Fusion Wedges (15 each size) 1 tensioning instrument 1 Set PerForm™ instruments
-------	---

Refills		Qty
RM500H	Margin elevation band	50
RM100D	5mm dead-soft matrices	50
RM200D	6.3mm dead-soft matrices	50
RM100H	5mm regular matrices	50
RM200H	6.3mm regular matrices	50
RM100B	5mm blue matrices	50
RM200B	6.3mm blue matrices	50
RMR100	5.9mm empty reel	100
RMR200	6.7mm empty reel	100
RMH-100	Tensioning instrument	

For wedge refills see page 10

### IMPORTANT ACCESSORIES

PerForm™ Proximal Contact Instrument  
(included in RMK07 kit)

Page 19

Great for core build-ups



## Direct cusp covering of vital element with a very deep cervical margin

Dr. Daniele Gensini

The case presents the need to seal the cervical margin, which is in a very deep position even if it can be isolated with a dam, and to recreate an adequate emergence profile. Thanks to the particular design of the Slick Bands™ matrices, this step was easy and made it possible to bring the restorative margin into a favorable position. Subsequently, after having recreated the direct covering of the missing cusp thanks to a previously created silicone index, the missing proximal wall was reconstructed with the aid of a Composi-Tight® 3D Fusion™ anatomical matrix, which was very useful for obtaining a correct emergence profile and an appropriate proximal contact point. Finally, the modeling of the restoration was completed and the correct occlusal contacts were checked.



**Figure 1.** Occlusal view of prepared tooth with cervical margin.



**Figure 2.** Slick Bands™ matrix placement with correct emergence profile.



**Figure 3.** Highly filled flowable composite for reconstruction of the deep cervical margin.



**Figure 4.** Restorative margin in a favorable position and with correct profile.



**Figure 5.** Correct adaptation of Composi-Tight® 3D Fusion™ matrix to the new restorative margin.



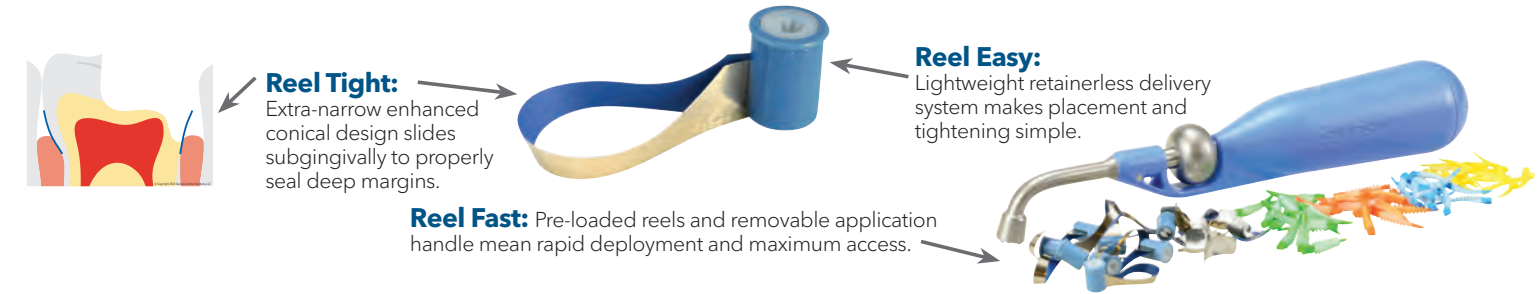
**Figure 6.** Lateral view of the correct emergence profile recreated.



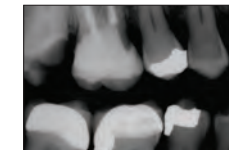
**Figure 7.** Occlusal check.

## Predictably relocate deep margins for better final restorations.

The conservative deep margin elevation procedure allows for the maximum conservation of natural tooth structure while helping to avoid more invasive procedures such as crown lengthening. Relocated supragingival margins facilitate easier scanning/impressions and proper isolation for improved bonding of inlays, onlays and direct final restorations.



**Clinical Case:** The margin elevation technique allows proper isolation and elevation of deep margin areas prior to restoring with an indirect partial coverage restoration (inlay or onlay). The use of the Garrison® ReelMatrix™ margin elevation band allows proper adaptation and seal of these deep areas so that a composite margin elevation can be performed.



Pre-op X-ray shows the margin location for #17 subgingivally prior to elevation.



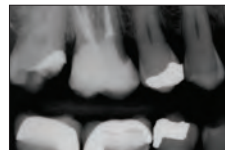
Seat the margin elevation band subgingivally. The narrowness of the matrix will allow it to slide subgingivally and seal the margin efficiently.



Seal the dentin and elevate the deep margin with restorative composite.



Remove the matrix and finish with a #12 blade to remove any flash. The deep margin has been relocated 1-2 mm supragingival for predictable isolation and delivery of an indirect bonded restoration.



Post-op X-ray shows the completed margin elevation prior to final restoration being completed.

Photos courtesy of Matthew A. Nejad DDS, Beverly Hills, CA

Exclusive Garrison® shapes!



Proprietary Right Curve™ design.

The increased curvature of the **Right Curve™ matrix band** produces outstanding gingival seal and reaches over to adjacent teeth easier for broader, deeper contacts.



This creates a significantly increased funnel-shaped cone when wrapped around a tooth. It's the right choice for many restorations.

Margin Elevation Band

The deep margin elevation technique is a useful non-surgical approach to treating deep localized margins.



A margin elevation matrix will give you the best gingival adaptation and contour for the deep margin areas. It is trimmed in height to allow improved adaptation to deep margin areas.

Slick Bands™ Tofflemire-style Matrices

**Clinical Tip:** Use dead-soft green bands when contact is COMPLETELY broken with adjacent teeth for maximum burnishability. When contact is NOT broken with adjacent teeth, use regular gray bands.

IMPROVED Dead-soft Bands with non-stick coating

Regular Bands with non-stick coating

#1 Universal for general restorations

SMT200D10 SMT200H10

Right-Curve™ matrices provide a lower contact point and improved isolation. Excellent for all restorations.

SMT400D10 SMT400H10

#13 Pedodontic for short and primary teeth

SMT050D10 SMT050H10

#2 Subgingival for deep restorations

SMT300D10 SMT300H10

SMT500H10 Margin Elevation Band

Tofflemire-style matrices are .0014" thick  
Margin elevation matrices are .002" thick

See pages 40-41 for Dr. Gensini's Margin Elevation case.



Slick Bands™

**Description**  
Slick Bands Kit  
300 Assorted Slick Bands  
100 G-Wedges  
PerForm instruments (1 set; shown on page 37)

**Item**  
SMTK06

Dead Soft Bands	Item	Standard (-M)	Bulk
		Qty.	Qty.
#1 Universal Tofflemire	SMT200D10	50	100
Right-Curve	SMT400D10	50	100
#13 Pedodontic	SMT050D10	50	100
#2 Subgingival	SMT300D10	50	100

Regular Bands	Item	Standard (-M)	Bulk
		Qty.	Qty.
#1 Universal Tofflemire	SMT200H10	50	100
Right-Curve	SMT400H10	50	100
#13 Pedodontic	SMT050H10	50	100
#2 Subgingival	SMT300H10	50	100

Regular Bands	Item	Standard (-M)	Bulk
		Qty.	Qty.
Margin elevation band	SMT500H10	50	100

To order standard packs, add a -M after the item #.



## Case using the Fusion™ Anterior Matrix System

Dr. Constance Lau, DDS, FAGD, FICOI



**Figure 1.** Recurrent caries under an existing composite restoration on the distal of lower left lateral incisor..



**Figure 2.** Shade selection and rubber dam isolation complete.



**Figure 3.** Existing composit resin restoration and caries removed. Extensive caries at distal of lower left lateral incisor involved large portion of facial and lingual walls.



**Figure 4.** Using the Garrison Anterior Fusion band and small wedge, an ideal contour to build up the lingual wall was achieved.



**Figure 5.** Anterior Fusion wedge and band were removed, revealing minimal flash and an ideal gingival emergence profile.



**Figure 6.** Final shaping and polishing were accomplished with Soflex discs and Enhance finishing points.

To see more cases, go to the Learning Center at [garrisondental.com/learning](http://garrisondental.com/learning)

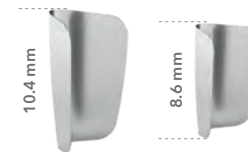
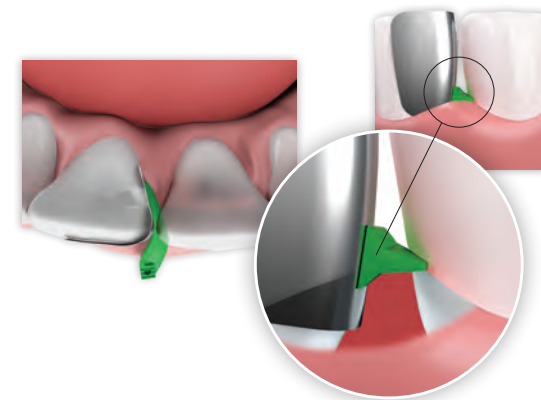
# Fusion™ Anterior

The **Fusion™ Anterior Matrix System** from Garrison® gives you the materials and techniques to restore many types of anterior lesions with confidence.



### ANK01 Contains:

- 50 short bands
- 50 tall bands
- 25 extra small wedges
- 25 small wedges
- 25 medium wedges
- 25 large wedges



## Fusion™ Anterior Bands

Refills	Item	Standard	Item	Bulk
		Qty.		Qty.
Short	AN100-M	50	AN100	100
Tall	AN200-M	50	AN200	100



## Fusion™ Anterior Wedges

Description	Item	Qty.	Item	Bulk
				Qty.
Fusion Anterior Wedge Kit	ANK4	400		
Fusion Anterior Wedge Kit	ANK4-M	200		
X-Small Yellow	ANYL-M	50	ANYL	100
Small Blue	ANBL-M	50	ANBL	100
Medium Orange	ANOR-M	50	ANOR	100
Large Green	ANGR-M	50	ANGR	100



Learn more about the Garrison® Fusion™ Anterior Matrix System














Clinical Case using the Garrison® Fusion™ Anterior Matrix System with Dr. JD Corey



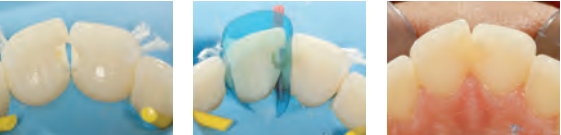
# Matrix Selection Guide

Being the Matrix Company, one of the most common questions we get is “which matrix do I use where?” While personal preference will drive much of the decision process, below is a chart that can provide a good starting point.

Procedure	Recommended Materials	Page	Procedure	Recommended Materials	Page
Back-to-Back 	<b>BEST CHOICE:</b> <b>Quad Ring, Quad Wedge, Firm Band</b> <b>Pros:</b> Ring driver tip and split wedge work together. Firm Bands prevent deformation. Reduced patient chair time. <b>Cons:</b> Learning curve.	4,11,14	Class III 	<b>BEST CHOICE:</b> <b>Anterior Fusion</b> <b>Pros:</b> Natural emergence profile and interproximal contours. <b>Cons:</b> Learning curve. Shape may not be appropriate for all teeth (i.e. bulbous). Not cure through. <b>OPTION 2:</b> <b>VariStrip</b> <b>Pros:</b> Simple. Cure through. <b>Cons:</b> Susceptible to deformation during use.	21 23
Wide Prep 	<b>BEST CHOICE:</b> <b>Strata-G™ Wide Prep Ring, Firm Band</b> <b>Pros:</b> Smaller ring diameter. The only sectional ring that can perform on wide preps. <b>Cons:</b> Limited application. Not recommended for basic Class II.	5, 11	Class IV 	<b>BEST CHOICE:</b> <b>Anterior Fusion</b> <b>Pros:</b> Natural emergence profile and interproximal contours. <b>Cons:</b> Learning curve. Shape may not be appropriate for all teeth (i.e. bulbous). Not cure through.	21
	<b>OPTION 2:</b> <b>3D Fusion™ Wide Prep Ring, Firm Band</b> <b>Pros:</b> Similar performance to Strata-G. <b>Cons:</b> Larger ring diameter.	5, 11		<b>OPTION 2:</b> <b>VariStrip</b> <b>Pros:</b> Simple. Cure through. <b>Cons:</b> Susceptible to deformation during use.	23
	<b>OPTION 3:</b> <b>ReelMatrix™</b> <b>Pros:</b> For teeth too broken down for a sectional matrix system. <b>Cons:</b> Less ideal contour and contact compared to a sectional matrix solution.	16-17			
Deep Prep 	<b>BEST CHOICE:</b> <b>Quad Ring, Quad Wedge, Firm Band</b> <b>Pros:</b> Split tip wedge sits deep in sulcus and is less likely to be pushed up by the gingiva. <b>Cons:</b> N/A	4,11,14	Class V 	<b>BEST CHOICE:</b> <b>Cervical Matrix</b> <b>Pros:</b> Compresses composite into the restoration. Limited finishing required. <b>Cons:</b> N/A	24
	<b>OPTION 2:</b> <b>Strata-G Wide Prep Ring, Firm Band</b> <b>Pros:</b> Strata-G wedge sits deeper than most wedges. <b>Cons:</b> Strata-G wedge does not sit as deep as Quad.	5,11			

Special Cases	Recommended Materials	Page	Procedure	Recommended Materials	Page
Deep Margin Elevation 	<b>BEST CHOICE:</b> <b>ReelMatrix, Deep Margin Elevation Band</b> <b>Pros:</b> Ability to seal very deep lesions. Lightweight, retainerless. <b>Cons:</b> Will not restore whole tooth. Step one of two step process. <b>OPTION 2:</b> <b>Deep Margin Elevation Tofflemire Band</b> <b>Pros:</b> Ability to seal very deep lesions. <b>Cons:</b> Retainer can torque the band out of position.	16-17	Pedo 	<b>BEST CHOICE:</b> <b>Strata-G Universal Ring</b> <b>Pros:</b> Retention capability on shorter teeth. <b>Cons:</b> N/A <b>OPTION 2:</b> <b>ReelMatrix</b> <b>Pros:</b> Speed. <b>Cons:</b> Less ideal contour and contact to a sectional matrix solution.	5 16-17
Last Tooth in Arch/Missing Adjacent Tooth 	<b>BEST CHOICE:</b> <b>ReelMatrix</b> <b>Pros:</b> Circumferential band can be placed without the presence of adjacent dentition. <b>Cons:</b> N/A. <b>OPTION 2:</b> <b>Tofflemire SlickBands</b> <b>Pros:</b> Circumferential band can be placed without the presence of adjacent dentition. <b>Cons:</b> Retainer can torque the band out of position. Cannot perform simultaneous multi-tooth restorations.	16-17 18-19	Distal of Canine 	<b>BEST CHOICE:</b> <b>Strata-G Universal Ring</b> <b>Pros:</b> Retention capability. <b>Cons:</b> May not retain in all circumstances. <b>OPTION 2:</b> <b>3D Fusion Universal Ring</b> <b>Pros:</b> Similar retention capability to the Strata-G. <b>Cons:</b> May not retain in all circumstances. <b>OPTION 3:</b> <b>Reel Matrix</b> <b>Pros:</b> ReelMatrix will work where a sectional matrix ring will not grip appropriately. <b>Cons:</b> Less ideal contour and contact to a sectional matrix solution.	5 7 16-17
Core Buildup 	<b>BEST CHOICE:</b> <b>ReelMatrix</b> <b>Pros:</b> Circumferential band can be placed without the presence of adjacent dentition. <b>Cons:</b> N/A <b>OPTION 2:</b> <b>Tofflemire SlickBands</b> <b>Pros:</b> Circumferential band can be placed without the presence of adjacent dentition. <b>Cons:</b> Retainer can torque the band out of position. Cannot perform simultaneous multi-tooth restorations.	16-17 18-19	Mal-Positioned	<b>BEST CHOICE:</b> <b>Quad Ring</b> <b>Pros:</b> Adapts to tooth rotation. <b>Cons:</b> N/A	4

# Cases using anteriors/cervicals



Images courtesy of Dr. Zunzarren, DDS



Images courtesy of Dr. Abdi Sameni, DDS

## VariStrip™

How can you produce a natural curvature for anterior composites and eliminate black triangles? Check out Garrison's curved "Varistrips" to recreate the natural interproximal anatomy for anterior teeth.

- Helps avoid incorrect flat embrasures, black triangles and food traps that can be caused by old-fashioned straight mylars.
- No need for wedges on subgingival fillings, as the contours naturally close off the apical aspects for you.
- Excellent for class IVs, diastema closures, etc.
- Variable height allows you to slide each strip in until it precisely matches the tooth height before cutting off excess.
- The blue tint does not affect cure, but ends the annoyance of losing clear strips on patient bibs or bracket tables.

Blue View VariStrips—a must-have super-simple product for every dental office.

*Dr. Michael Curtis, Bridgeport, CT, USA*

## Clinical Tip

After using your preferred bonding procedure, place the restorative material into the preparation in advance of using the cervical matrix.

Place the cervical edge of the matrix against the tooth (Fig. 1).

While pressing the gingival edge of the matrix firmly against the tooth, roll the matrix onto the tooth (Fig. 2). Excess material will be expressed from the occlusal edge of the matrix rather than subgingivally, greatly simplifying clean up.

Cure directly through the matrix.

**For product information on the cervical kit, refer to page 24.**



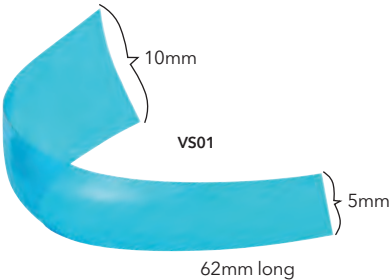
Photo courtesy of  
David S. Hornbrook, DDS, FAACD  
International Lecturer and  
Private Practice, San Diego, CA

**Curved Form/tapered:** Provides the optimum curvature and band height for virtually every anterior restoration.

**Blue Tint:** Provides contrast between matrix and tooth structure without compromising composite polymerization.

## Our Most Popular Anterior Matrix

# VariStrip™



The Blue View™ VariStrip™ is a revolutionary contoured anterior matrix providing the optimum curvature and band height for virtually every anterior restoration. The 0.0020" thin plastic anatomical strip is tapered from one end to the other. You can place the strip interproximally and then slide it until the tooth height is perfectly matched. The pre-contouring easily recreates the occluso- gingival anatomy, avoiding flat embrasures.

## Blue View™ VariStrip™

Item	Qty.
VS01	100
VS02	50

# Cervical Matrices

"I love the Blue View Cervical Matrix! It works so well. My assistants love watching me use this system. The patients love the excitement in our faces. It makes the process easy and fast. Gotta love that! We are also hooked on using the ReelMatrix. Thanks so much for making great products."

Cynthia Brattesani, DDS,  
San Francisco, CA, USA



### Flexible

- adapts to individual anatomy for improved contours
- use it to directly compact the composite into the restoration
- thin edges allow excess composite to flow out for improved anatomy

### Blue Tint

- provides contrast between matrix and tooth structure
- does not compromise composite polymerization

### Convenient!

- protects the restoration from contamination
- eliminates time spent hand sculpting
- eliminates air-inhibited layer
- reduces finishing time
- 6 sizes for a perfect fit

### KCMK2 INCLUDES

240 Assorted Matrices  
1 Matrix placement Instrument

### MATRICES INCLUDED:

Anterior/Premolar  
KCMA60 – 50 pcs  
Molar  
KCMA70 – 50 pcs  
KCMA10 – 35 pcs  
KCMA20 – 35 pcs  
KCMA30 – 35 pcs  
KCMA40 – 35 pcs

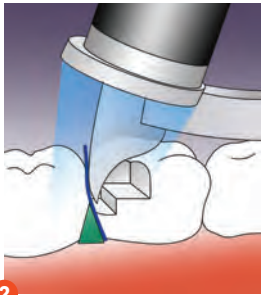
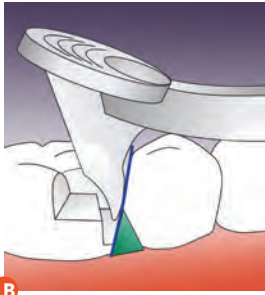
## Blue View™ Cervical Matrices

Item	Description
KCMK2	Assortment Kit w/instrument
<b>Refills</b>	
KCMA10	Refill 100 pack
KCMA20	Refill 100 pack
KCMA30	Refill 100 pack
KCMA40	Refill 100 pack
KCMA60	Refill 100 pack
KCMA70	Refill 100 pack
KCMINST1	Placement Instrument

### How PerForm™ works:



**STEP 1:** Place the first composite increment. Press PerForm™ into the uncured composite increment and either push (distal; fig. 1A) or pull (mesial; fig. 1B).



**STEP 2:** Place the curing light directly on the Fresnel lens and cure.

**PerForm™**

**PerForm**  
puts you  
in control.

- Improves contacts with any matrix system
- Control the height and breadth of contacts
- Increase the tightness of contacts
- Unique lens controls curing light diffusion
- Steam autoclave only

**PerForm™**

Item	Kit	Qty.
CFK01	PerForm (1/ea. size)	2/pk
CF100	1.1 mm Small Instruments	2/pk
CF200	2 mm Large Instruments	2/pk



"To ensure a tight contact a bulk fill flowable was placed in one proximal box at a time and the mylar held against the adjacent tooth with a PerForm™ proximal contact instrument. This ensures that the contact is tight and well-formed while light curing through it."

Dr. Jack D. Griffin, Jr., DMD, MAGD  
Weldon Spring, MO

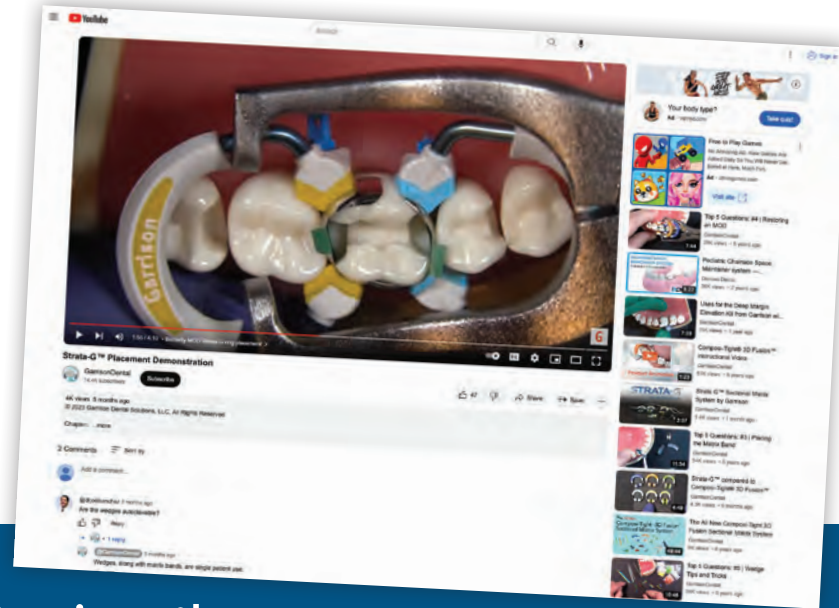
# Great technique tips and product help are only a click away!

Join thousands of subscribers on our YouTube channel and get notified instantly when new content is posted.



The Garrison® YouTube channel is NOT a collection of infomercials. It's all about helpful information on a wide variety of topics. From short two-minute tips on how to reduce flash on Class IIs, to more in depth live patient case presentations, the Garrison® channel delivers great content.

Go to [youtube.com/garrisondental](https://youtube.com/garrisondental) or search Garrison Dental on YouTube and subscribe today!



Speaking of great content...

## Get CE credits direct from Garrison®!



Go to the Learning Center at [garrisondental.com](https://garrisondental.com) to see a list of pre-recorded and upcoming live webinars—many with available CE.

Register for an online account on our website to sign-up for CE courses and manage your CE credits.



Garrison Dental Solutions  
Nationally Approved PACE Program Provider for FAGD/MAGD credit.  
Approval does not imply acceptance by any regulatory authority or AGD endorsement.  
9/1/2022 to 8/31/2026.  
Provider ID# 304999



# Looking for case studies? Browse our extensive library!



## Clinical Management of Deep Subgingival Margin Elevation in Posterior Teeth with Structural Compromise



Dr. Gutierrez is a graduate of the dental school of Pedro de Valdivia University, in Santiago, Chile. He has carried out his entire career in the private sector, in private clinics located in Santiago.

*The Garrison ReelMatrix™ Deep Margin Elevation system was used to achieve these results.*



Image 1: Composite resin restoration partially covering the occlusal surface.



Image 2: Old restoration completely removed.



Image 3: Margin Elevation Band adapts to tooth, achieving a perfect marginal seal.



Image 4: Adhesive applied, followed by application of hydrophobic layer, and finally a 3mm strip of Ribbond and resin.



Image 5: Minimal biological preparation was performed using diamond burs and impression taken for fabrication.



Image 6: Complete restoration.

## Discover the Loop™ Difference

Loop delivers all the functionality you'd expect from a premium curing light - and several advanced features you won't find anywhere else. Here's how Loop stands apart from today's industry-leading curing lights:

	Loop™	OTHERS
Lens Self-Check on Return to Charger	✓ Yes	✗ No
Monthly Full Calibration	✓ Yes	✗ No
Supports Consistent Energy Delivery	✓ Actively adjusts in real time to changes in distance and angle	✗ No
Barrier Sleeve Compensation Setting	✓ Automatically adjusts irradiance output when barrier sleeve used	✗ No
Beam Profile Uniformity	✓ Broad, uniform beam	✓ Broad, uniform beam
Broad Spectrum Coverage	✓ 390 - 480 nm	✓ 385 - 515 nm
High Output Modes Available	✓ Up to 3000 mW/cm <sup>2</sup>	✓ Up to 3000 mW/cm <sup>2</sup>
Low Profile Tip Design	✓ Yes	✓ Yes
Rotating Tip for Access	✓ Yes	✗ No

### Self-Check System & Full Calibration for Consistent Performance

- Loop automatically checks its lens **every time it returns to the charger**, ensuring it's clean and damage-free
- Run a **full calibration monthly** (or on demand) to adjust for LED aging, battery wear, or lens issues – delivering consistent performance over the unit's lifetime
- **Peace of mind:** Know your curing light is working exactly as specified, day after day

### Adaptive Closed-Loop Control for True Precision

- Loop's patented **Closed-Loop Algorithm** continually monitors reflected light from the tooth and adjusts output in real time
- Guarantees the precise energy dose needed for a perfect cure, regardless of **distance, angle, or hand movement**
- **Training Mode or Continuous:** Closed-Loop mode can be used for training or remain active continually for a constant safety net

Only Loop delivers real-time, closed-loop irradiance control with self-calibration – ensuring the cure you prescribe is the cure you deliver.

### Why it Matters

- » Helps prevent under-curing: Avoid issues like wear, marginal breakdown, or post-op sensitivity
- » Delivers consistent energy every time, even under challenging clinical conditions
- » May reduce potentially costly remakes and emergency patient visits

CLK01



## IPR Management in Clear Aligners Therapy

Dr. Tommaso Weinstein, DDS, PhD

Interproximal space management is a very important issue in clear aligners therapy. This case presented crowding in upper and lower arches. It was treated with clear aligner therapy through a digital planification.

The interproximal reduction (IPR) was carefully planned. The multiple thicknesses of FitStrip™ allowed IPR to be performed with predictability and control. The patient reported excellent comfort during the procedure, better than what was reported with traditional strips.



**Fig 4-7.** Digital planification, before (4 and 5) and after (6 and 7). Numbers refer to IPR required.



**Fig 9.** Clear aligners in place. **Fig 10 and 11.** Direct composites on incisal edges.



**Fig 1, 2 and 3.** Initial situation, upper and lower arch.



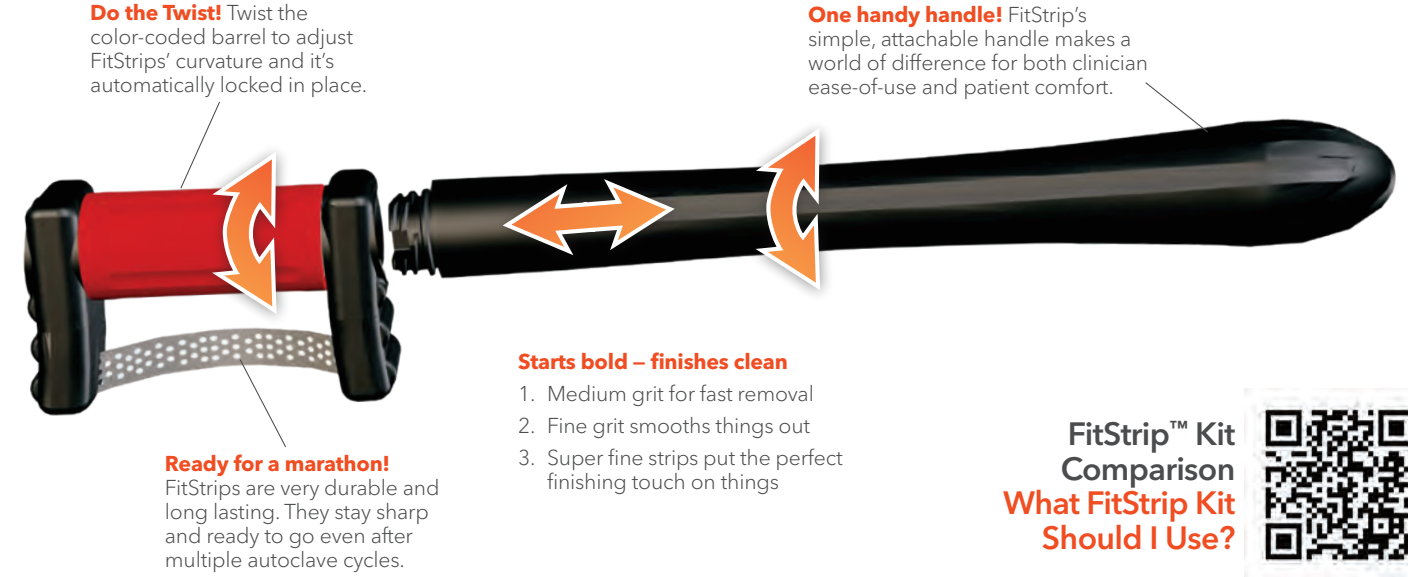
**Fig 8.** Use of FitStrip™ for IPR.



**Fig 12 and 13.** Final result in upper and lower arch.

# Fit Strip™

**FitStrips** are a complete line of interproximal trimmers and finishers from the company that invented tight interproximal contacts, **Garrison® Dental Solutions.**



**FitStrip™ Kit Comparison**  
**What FitStrip Kit Should I Use?**



# Fit Strip™



**The FitStrip™ kit that started it all!**

- Primary Function: Contouring Composites and IPR up to .30mm.
- Durable diamond abrasive on just one side to protect adjacent teeth
- The FitStrip™ serrated saw is the PERFECT instrument to separate accidentally bonded teeth and reduce over-tight contacts

## FitStrip™ Starter Kit

**FPSK01 contains:** 2 handles, 2 serrated, 4 single sided (1 of each .08 mm, .10 mm, .13 mm, .18 mm) 4 double sided (1 of each .11 mm, .15 mm, .21 mm, .30 mm)



**Most popular!**

**Your Complete Solution for Interproximal Reduction (IPR)!**

- Primary Function: IPR when .40mm and .50mm are needed, yet can still be used to contour composites
- IPR gauges for exact reduction
- Attachable handle for greater ease of use and patient comfort

## Universal Kit

**FPSK04 contains:** 2 handles, 1 IPR gauge, 4 single sided (1 of each .08 mm, .10 mm, .13 mm, .18 mm) 6 double sided (1 of each .11 mm, .15 mm, .21 mm, .30 mm, .40 mm, .50 mm)



**Subgingival FitStrips are the ideal solution for the cervical area!**

- Primary Function: Use with Composites, both for contouring and accessing cervical areas to remove overhangs or excess cements.
- Only 2.5mm height keeps abrasive below the contact point
- Safety zone protects contacts during insertion
- Extra thin at .05mm

## FitStrip™ Subgingival Finishing and Single Sided Kit

**FPSK08 contains:** 2 handles, 10 Strips: 2 subgingival super fine, 2 subgingival fine, 1 subgingival medium, 1 serrated saw, 1 each single sided .08 mm, .10 mm, .13 mm, .18 mm

# Fit Strip™

**FitStrips** – a complete line of interproximal trimmers and finishers from the company that invented tight interproximal contacts, **Garrison Dental Solutions.**

**Kits** All kits come in a package of 10 FitStrips with 2 handles.

Description/Contents	Item	Primary Use
<b>Starter Kit for finishing/polishing</b> 2 serrated 4 single sided (1 of each .08 mm, .10 mm, .13 mm, .18 mm) 4 double sided (1 of each .11 mm, .15 mm, .21 mm, .30 mm)	FPSK01 (shown on page 20)	Finishing composites
<b>Universal Kit for IPR and finishing/polishing</b> 1 IPR gauge 4 single sided (1 of each .08 mm, .10 mm, .13 mm, .18 mm) 6 double sided (1 of each .11 mm, .15 mm, .21 mm, .30 mm, .40 mm, .50 mm)	FPSK04 (shown on page 20)	Finishing composites and IPR
<b>IPR Kit</b> 1 IPR gauge 10 double sided (2 of each .11 mm, .21 mm, .30 mm, .40 mm, .50 mm)	FPSK05	IPR
<b>Subgingival Finishing Kit</b> 3 subgingival super fine, 3 subgingival fine, 3 subgingival medium, 1 serrated saw	FPSK07	Subgingival
<b>Subgingival Finishing and Single Sided Kit</b> 2 subgingival super fine, 2 subgingival fine, 1 subgingival medium, 1 serrated saw, 4 single sided (1 of each .08 mm, .10 mm, .13 mm, .18 mm)	FPSK08 (shown on page 20)	Subgingival and finishing composites

Refills		Single Sided	Double Sided	10 pk w/2 handles	4 ct packs
Super fine 15 Micron		FPSXFSS 0.08 mm thick	FPSXFDS 0.11 mm thick	Either Refill	add -4 to model #
Fine 30 Micron		FPSFSS 0.10 mm thick	FPSFDS 0.15 mm thick	Either Refill	add -4 to model #
Medium 46 Micron		FPSMSS 0.13 mm thick	FPSMDS 0.21 mm thick	Either Refill	add -4 to model #
Coarse 90 Micron		FPSCSS 0.18 mm thick	FPSCDS 0.30 mm thick	Either Refill	add -4 to model #
Serrated Most Popular Medium 46 Micron		FPSSAW 0.05 mm thick		Refill	add -4 to model #
Medium 46 Micron		N/A	FPSTMDs 0.40 mm thick	Refill	add -4 to model #
Super fine 15 Micron Subgingival Fine 30 Micron Subgingival Medium 46 Micron Subgingival		FPSGXFSS 0.08 mm thick	N/A	Refill	add -4 to model #
		FPSGFSS 0.10 mm thick	N/A	Refill	add -4 to model #
		FPSGMSS 0.13 mm thick	N/A	Refill	add -4 to model #
<b>FitStrip™ replacement handles</b> (2-pack) FPSHANDLE-2					
IPR Gauge FPSGAUGE					

# Rally™

## Single Patient Disposable Convenience!

One lightning fast step will put a beautiful satin finish on posterior restorations or add the gray high shine polisher for a lustrous gloss on facials and anteriors.

And if you want to be quick off the starting line, use the blue coarse grit for rapid reduction and shaping. Rally Mini Polishers get you across the finish line and on to your next patient in record time!

### Get to the point - Every time!

Single patient Rally means that you get a clean, fresh, properly shaped polisher every time.



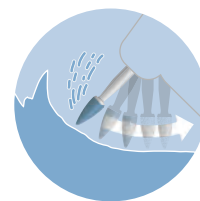
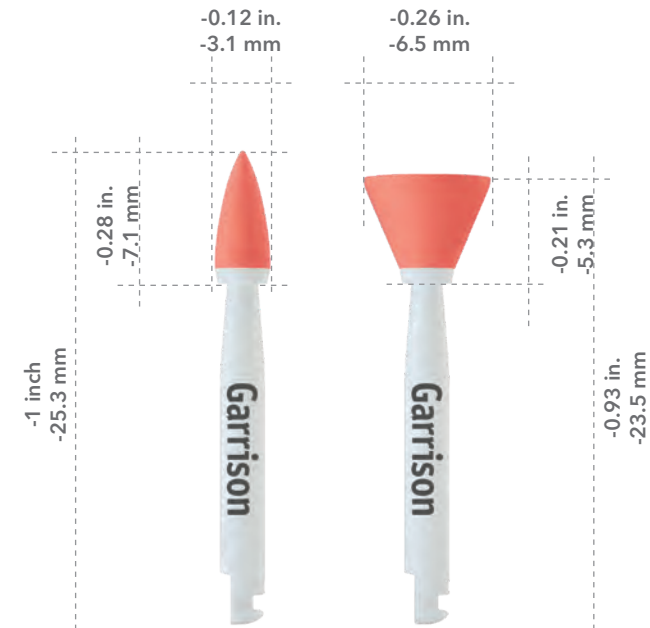
### Mini and mighty!

Rally's small size and tapered shaft create a truly agile polisher capable of reaching the smallest anatomical features without blocking your visibility.

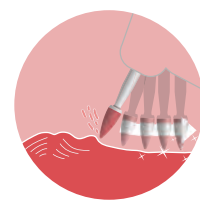


### A clean get-a-way!

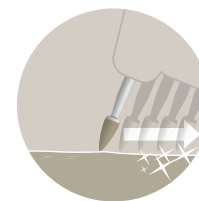
You don't want to leave a trail of crumbs or spattered polishing paste on the track. Rally's diamond impregnated high shine final polishers won't crumble during use and don't require paste to create a beautiful, durable shine.



**Remove - Choose the Blue (silicon carbide)**  
Polishers for fast removal and contouring



**Smooth - Choose the Red (aluminum oxide)**  
Polishers for smoothing and silky shine



**Shine - Choose the Gray (diamond impregnated)**  
Polishers for ultra high shine



Slow speed right angle latch shank.  
Use with water.

## Rally™

Item	Description	Qty.
FPCK01	Composite Polisher Complete Kit	60 (10 each)

Item	Refills	Qty.
FPCC010	Blue coarse grit point composite polisher	30
FPCC040	Blue coarse grit cup composite polisher	30
FPCM010	Red medium grit point composite polisher	30
FPCM040	Red medium grit cup composite polisher	30
FPCF010	Gray fine grit point composite polisher	15
FPCF040	Gray fine grit cup composite polisher	15



## Adjust and Polish Zirconia and Lithium Disilicate the eZr Way!

### eZr Intra-oral Adjustment:



- **No chatter, chipping or microfracture** - Unlike diamonds bonded directly to a hard metal shaft, eZr's rubber substrate cushions the diamonds to prevent damage to the restoration.
- **No heat build-up** - The carefully engineered substrate does not transfer heat during use.
- **FAST!** - eZr's coarse grit blue grinders make your adjustments fast and convenient.

### eZr Intra-oral Polishing:



- **Unparalleled smooth polish** - Don't take our word for it! - "The eZr system is the only one I've tried that polishes zirconia to smooth!" Todd Brower, DDS, Holland, Michigan.
- **Increased physical stability** - Highly polished zirconia and lithium disilicate is stable and non-abrasive to opposing dentition.
- **No paste required** - Forget the mess and expense of polishing pastes. eZr™ is all you need.
- **No water required** - No need to use water when polishing. Water is only required for high speed.



1 Start by gross adjusting and contouring using the blue coarse grit grinders. Use the flat end taper for occlusal/labial/lingual/buccal surfaces and the disc for interproximal surfaces.



2 Use the green medium grit polishers for smoothing and pre-polishing. Use the point for the occlusal grooves, the cup for labial/lingual/buccal, and the disc for interproximal surfaces.



3 Use the orange fine grit polishers for high gloss polishing. Use the point for the occlusal grooves, the cup for labial/lingual/buccal, and the disc for interproximal surfaces.



Beautiful results!

*Images courtesy of Dr. Riccardo Becciani, Italy*



Slow speed right angle latch shank  
Steam autoclaveable

Item	Description	Qty.
FPZK01	Complete system kit Gross removal, smoothing, pre-polishing, and high gloss polishing	2 grinders 6 polishers
FPZC030	Blue coarse grit disc Gross removal	5/pk
FPZC010	Blue coarse grit flat end taper Gross removal	5/pk
FPZM010 (not in kit)	Green medium grit small point polisher Smoothing and pre-polishing	5/pk
FPZM020	Green medium grit large point polisher Smoothing and pre-polishing	5/pk
FPZM030	Green medium grit disc polisher Smoothing and pre-polishing	5/pk
FPZM040	Green medium grit cup polisher Smoothing and pre-polishing	5/pk
FPZF010 (not in kit)	Orange fine grit small point polisher High gloss polishing	5/pk
FPZF020	Orange fine grit large point polisher High gloss polishing	5/pk
FPZF030	Orange fine grit disc polisher High gloss polishing	5/pk
FPZF040	Orange fine grit cup polisher High gloss polishing	5/pk

toll free 888.437.0032 | [www.garrisondental.com](http://www.garrisondental.com)

# Find the right forceps for your practice

Garrison offers three distinct forceps options, each designed to enhance grip, precision, and control - so you can work with confidence.

## Precision Band Wedge Forceps NTG-DF6-8

**Grip Strength:** Medium 2.25 lb, 4x Standard cotton forceps  
**Best for:**

- Matrix band placement/removal
- Wedge placement/removal
- General use - an ideal upgrade from cotton forceps



This economical option delivers a big step up from traditional cotton forceps, with deep interdigitating teeth that offer solid grip and improved tactile control, delivering four times the grip strength compared to standard cotton forceps.

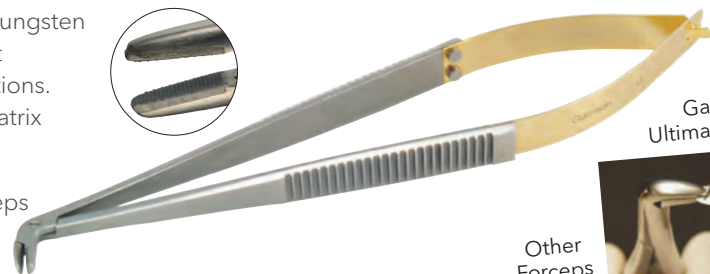
## Ultimate Band Forceps BFA-1

The gold standard in grip strength. Featuring interdigitating tungsten carbide inserts and a 75° angled tip, this precision instrument provides unmatched control and access for posterior restorations. Trusted by clinicians for years, it remains the top choice for matrix placement and removal.

**Grip Strength:** Ultra-high - 37.75lb!, 66x Standard cotton forceps  
**Best for:**

- Matrix band placement/removal only\*

\* Not for use with wedges or general procedures - may damage the instrument



Garrison BFA-1  
Ultimate Band Forceps

Other  
Forceps



## Advanced Band Wedge Forceps BWI

**NEW!**

**Grip Strength:** High - 8.0 lb!, 16x Standard cotton forceps  
**Best for:**

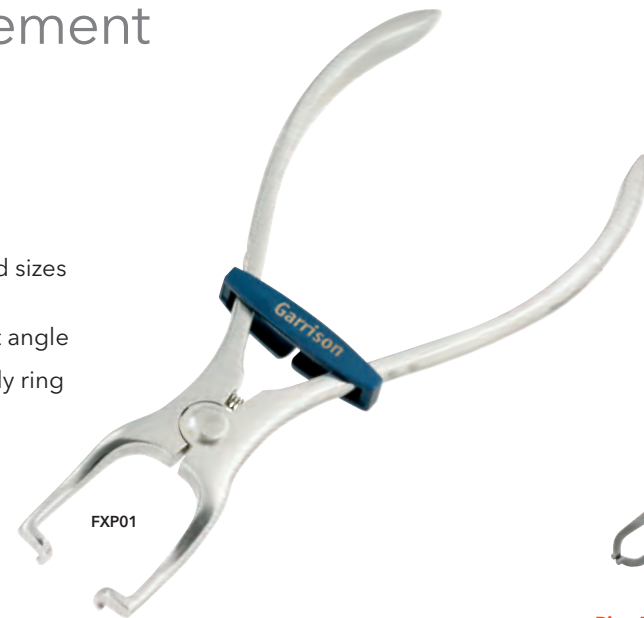
- Matrix band placement/removal
- Wedge placement/removal
- All-purpose replacement for cotton forceps



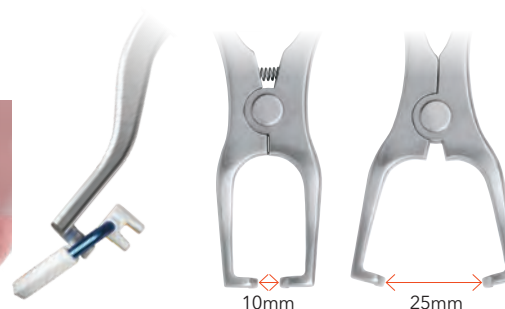
Don't be fooled by the familiar shape of the Advanced Band Wedge Forceps - it is NOT just another cotton forceps. Specially engineered teeth and tip geometry allow this versatile instrument to deliver sixteen times the grip strength of standard cotton forceps while maintaining tactile sensitivity for placement and removal without compromise.

# Garrison® Premier Ring Placement Forceps

- Extra durable
- Designed for all hand sizes and hand strengths
- Improved placement angle
- Traditional or butterfly ring placement



## Garrison® Premier Ring Forceps – Improved! FXP01



# Ring Placement Forceps



## Ring Placement Forceps AUMRDF-100



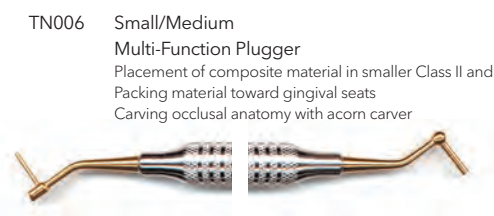
## Universal Forceps for placing rubber dam clamps and rings UNVF-100



# Composite Instruments

Our multi-function instruments have double condenser configurations and carving blades on opposite ends. Now you can place, pack, shape and carve your way to perfectly contoured composite restorations without ever having to switch instruments!

- Large-diameter, lightweight handles for improved ergonomics.
- Provides non-stick surface for placement and shaping of composites.
- 40% smoother than stainless steel for a non-porous, non-stick surface.
- Withstands diverse cleaning/sterilization methods, including ultrasonic cleaning.



# Order Form

Item Number	Description	Quantity	Price/Unit	Total Price
		Sales Tax		
		Total Price		

All prices subject to change without notice. Appropriate shipping charges and sales tax will be added. Special offers not valid with any other advertised specials.

Doctor's Name		
Contact Name		
Address		
City	Province	Postal Code
Phone		
Email		

## Customer Service Information

Call **888.437.0032 Toll Free**  
(USA & Canada)

616.842.2244

Email [gds@garrisondental.com](mailto:gds@garrisondental.com)

Online **[garrisondental.com](http://garrisondental.com)**  
Look for our Learning Center  
with clinical tips, case studies  
and CE webinars.

Mail 150 DeWitt Lane  
Spring Lake, MI 49456  
USA

## Distribution

Garrison is a global leader for practical and innovative dental products and accessories, with distributors worldwide.

We are pleased to announce that your favorite Garrison products are available through several full-service dealers in Canada.

To find a dealer, contact our headquarters in Spring Lake, Michigan. Phone: 888.437.0032 or Email: [gds@garrisonsdental.com](mailto:gds@garrisonsdental.com)



Order Toll Free • Order Online • Order by Mail

# Garrison® Guarantee

You can buy with complete confidence when you select Garrison products. We support all our products with expert customer service, outstanding warranties, and unrivaled satisfaction guarantees. Please visit our website for details.



# Garrison.

 **curion**  
dentistry. curated.

Distributed by Curion  
**EN: 1.800.667.8811**  
**FR: 1.800.211.1200**  
**curion.ca**

**INCA26CAT**