

The background features a large, stylized circular graphic on the right side, composed of overlapping translucent shapes in shades of orange, red, and grey. A central portion of this graphic is a blurred, horizontal streak of light in warm tones, suggesting motion or a bright light source. The overall design is modern and professional.

Garrison[®]

Dental Solutions

Putting ideas
into practice

Product Catalogue **2022**

table of contents

MATRIX SYSTEMS

sectional matrix systems	Composi-Tight® 3D Fusion™	4-5
	Matrix Rings	8-9
retainerless Tofflemire-style	Reel Matrix™	28-29
	Pinch™ Matrix	32
traditional Tofflemire-style	Slick Bands™	30-31
anterior matrix systems	Fusion™	6-7
	VariStrip™	34
cervical matrix systems	Blue View™ Cervical Matrices.	35

WEDGES

plastic	Composi-Tight® 3D Fusion™ Wedge	14
	A+Wedge®	15
	WedgeWands®	15
	G-Wedge™	15
wood	SoftWedge™	15
pre-wedge & shield	FenderWedge®	17

IMPORTANT ACCESSORIES

interproximal finishers	FitStrip™	18-21
polishing systems	Rally™	22-23
	eZr™	24-25
forceps	Composi-Tight® Matrix Forceps	36
	Composi-Tight® 3D Fusion™ Forceps	37
	Ring Placement Forceps	37
	Universal Placement Forceps	37
specialty	PerForm™ Contact Former	33
composite instruments	Multi-Function Non-Stick	38
	Standard Non-Stick	39

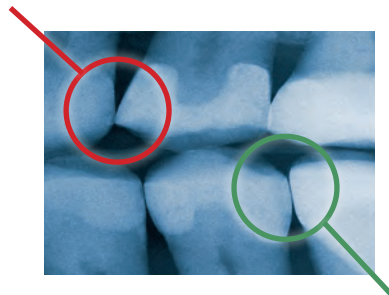
INFORMATION PAGES

Composi-Tight® 3D Fusion™	2-3
Band Comparison Chart	11-13
Cases	10, 26, 27, 32
CE Information	16
Matrix Selection Guide	40-41
Order Form	42
Ordering Information	43
Guarantee	back cover

**Only a sectional matrix
can deliver results like
this!**

Tofflemire-style System

- ❌ Fails to restore proximal anatomy
- ❌ Thin contact at the marginal ridge
- ❌ Large food trap below
- ❌ Increased likelihood of fracture, occlusal interference, recurrent caries and periodontal disease



Composit-Tight® 3D Fusion™ Sectional Matrix System

- ✓ Operator-friendly retaining system
- ✓ Naturally contoured bands
- ✓ Anatomically correct contacts
- ✓ Contacts at the height of contour
- ✓ Rings produce optimal tooth separation for excellent, tight contacts

**Only Composit-Tight® 3D Fusion™
can make the technique this
intuitive and frustration free!**



Place the matrix band:

Dead-soft three dimensionally contoured matrices have placement tabs for easier occlusal placement and Garrison's revolutionary non-stick coating for hassle-free removal.



Wedge firmly:

Composit-Tight® 3D Fusion™ Ultra-Adaptive wedges glide in but won't back out. Their soft, flexible exterior readily adapts to interproximal irregularities for a superior gingival seal.

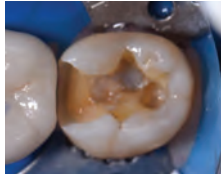


Place the ring:

All three Composit-Tight® 3D Fusion™ separator rings will fit right over the wedge for easier placement. With Ultra-Grip™ retention extensions, they will stay firmly in place from the distal of the canine to the widest of molar preparations.

Composi-Tight® 3D Fusion™ Cases

Great adaptation to the teeth eliminates the need for adjustment with polishers in the proximal areas.



Images courtesy of Dr. Clarence Tam, Auckland, NZ

Wide preps can be handled in one simple step when you have the right (FX600 green) ring.



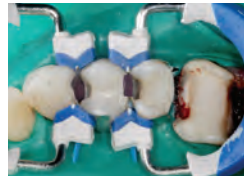
Images courtesy of Dr. Nikhil Sethi, BDS (Lon) Msc (Lon), Birmingham, UK

Back-to-back requires a shift in technique—we can show you how.*



Images courtesy of Dr. Jeffrey Kelley, DDS, Zeeland, MI

Quadrants can be a challenge. Ease your concerns with tips and tricks from the pros.



Images courtesy of Dr. Mike Malone, DDS, Lafayette, LA

*To see full writeups, cases and reviews go to www.garrisondental.com/learning
Do you have a case you want to share? Email it to us at contact@garrisondental.com.

The Award Winning Composi-Tight® 3D Fusion™ Sectional Matrix System



TESTIMONIAL

"3D rings are the real topic of Garrison's systems. The "v" shape of the ring that fits in the interproximal area allows a good fitting between the cavity margins and the matrix in the buccal and palatal walls. This results in an easier positioning of the composite masses close to the cavity margins and also the final remodeling usually necessary at the time of removal of the matrix will be very minimal. The rings also permit a divergence of the interproximal dental elements, and this causes a great point of contact. Garrison systems make Class II restorations simpler and more predictable and also reduce the operating time of the finishes when the matrix is taken off."

Enrico Cogo, DDS
Legnago, Ferrara, and Goito, Italy

Composi-Tight® 3D Fusion™

More than 20 years of sectional matrix leadership and an incredible amount of feedback from users all over the globe were poured into the design. All this hard work has resulted in separator rings with significantly improved performance and ease of use.

Tight contacts - guaranteed!

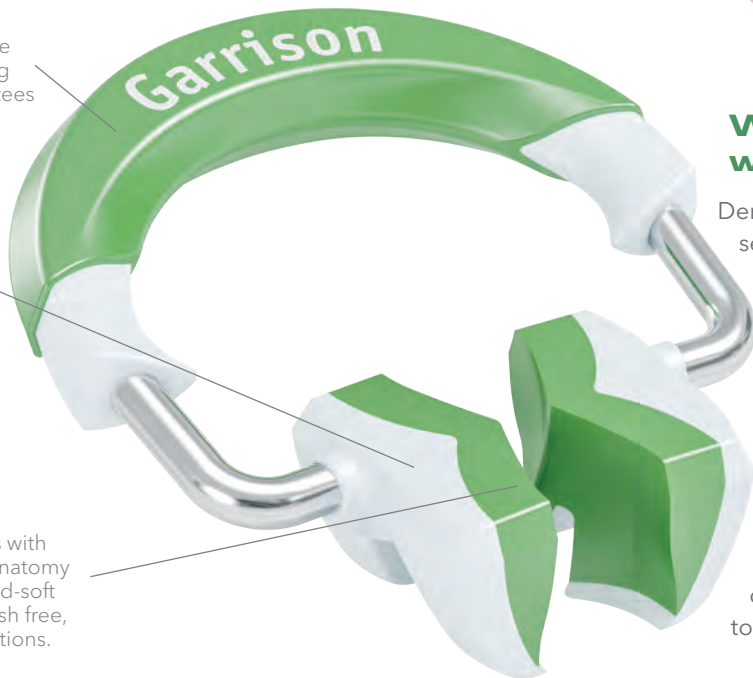
Superior tooth separation force through advanced engineering and material selection guarantees perfect contacts every time.

Simplified technique!

Composi-Tight® 3D Fusion™ is packed with features like easy ring stacking, over-the-wedge placement and Ultra-Grip™ anti-ring slip extensions that make system use intuitive and frustration free.

Ideal anatomy!

Soft-Face™ silicone ring tips with enhanced marginal ridge anatomy hug the pre-contoured dead-soft matrices to the tooth for flash free, perfectly contoured restorations.



Wider indications, wider smiles!

Dentistry's first Wide Preparation separator ring (green) makes Composi-Tight® 3D Fusion™ the most versatile and user-friendly sectional matrix system available. The Wide Prep ring greatly simplifies what until now has been one of the most challenging posterior composite restorations. Now you can restore these big preps with confidence knowing that you will achieve excellent contact and contour without having to take extra steps.

Composi-Tight® 3D Fusion™

Sectional Matrix System

A system designed to handle even the toughest cases



See cases and videos online!



Composi-Tight® 3D Fusion™ Bands # .0016" thick	FX100	FX150	FX175	FX200	FX300
Non-stick dead soft stainless steel	bicuspsids 4.0 mm w/ext 4.4 mm	bicuspsids with deep cervical preparations 4.1 mm w/ext 6.0 mm	bicuspsids and small molars 5.0 mm w/ext 5.6 mm	molars 5.4 mm w/ext 6.6 mm	molars with deep cervical preparations 6.0 mm w/ext 8.7 mm

Kit

- 1 Short Ring (blue)
- 1 Tall Ring (orange)
- 1 Wide Prep Ring (green)
- 70 Assorted Full Curve Non-Stick Matrix Bands
- 80 Assorted Ultra-Adaptive Wedges
- 4 Assorted FenderWedges® (pg 19)
- 12 Assorted Rally™ Polishers (pg 24-25)
- 1 Ring Placement Forceps (pg 39)
- 1 BFA-1 Band Placement Forceps (pg 38)
- 1 TN009 Multi-Function Instrument (pg 40)

Item

- FXR-KFF-11
- FXR-KFF-10 (BFA-1 and TN009 not in kit)
- FXR-KFF-14 (TN009 not in kit)

Composi-Tight® 3D Fusion™ Rings

- Short Ring (blue)
- Tall Ring (orange)
- Wide Prep Ring (green)
- 3-Ring Kit (1 of each ring)

Item	Qty.
FX400	2
FX500	2
FX600	2
FXR01	3

Composi-Tight® 3D Fusion™ Bands

- Bicuspsids
- Bicuspsids w/ deep cervical preps
- Bicuspsids and small molars
- Molars
- Molars w/ deep cervical preps

	Standard (-M)	Bulk
Item	Qty.	Qty.
FX100	50	100
FX150	30	60
FX175	50	100
FX200	50	100
FX300	30	60



Case using the Fusion™ Anterior Matrix System

Dr. Clarence "Clarie" Tam (Auckland, New Zealand) demonstrates her technique for efficient Class III restorations while bonding to multiple substrates.



Figure 1.

The final preparation form involved a substrate of both feldspathic porcelain/leucite-reinforced glass ceramic as well as dentin and cementum.



Figure 2.

The distal aspect of #8 was isolated with a Fusion™ Anterior sectional matrix and a curved orange wedge secured to ensure linguoproximal adaptation and thus a minimal of flash or overhangs of restorative material.



Figures 3 and 4.

The mesial of #8 was restored next, followed by the MP of #7.



Figure 5.

Completed restorations.

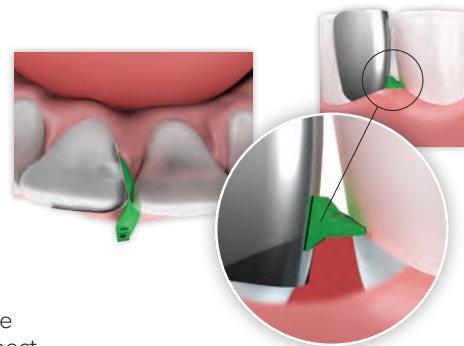
To see the full article, go to the Learning Center at garrisondental.com/learning

Fusion™ Anterior Matrix System

The **Fusion™ Anterior Matrix System** from Garrison® gives you the materials and techniques to restore many types of anterior lesions with confidence.

For years, our customers have shown us how they use posterior metal matrices to restore anterior teeth. When placed vertically, what was the buccal-lingual curvature of the band creates ideal gingival-incisal curvature for an anterior tooth. We worked with these customers to design a metal matrix band that takes this technique to a whole new level of refinement.

Add to that the intelligent design of the new **Fusion™ Anterior Wedges** and you get a complete system. These radically curved wedges hug the bands to the tooth all the way from the facial aspect around to the lingual, helping to free up your hands. Composite placement and sculpting are simplified, allowing you to easily express your artistic nature restoring beautiful smiles for your patients.



ANK01 Contains:

- 50 short bands
- 50 tall bands
- 25 extra small wedges
- 25 small wedges
- 25 medium wedges
- 25 large wedges



Fusion™ Anterior Bands

Refills	Item	Standard	Item	Bulk
		Qty.		Qty.
Short	AN100-M	50	AN100	100
Tall	AN200-M	50	AN200	100

Fusion™ Anterior Wedges

Description	Item	Qty.	Item	Bulk
				Qty.
Fusion Anterior Wedge Kit	ANK4	400		
Fusion Anterior Wedge Kit	ANK4-M	200		

Refills	Item	Standard	Item	Bulk
		Qty.		Qty.
X-Small Yellow	ANYL-M	50	ANYL	100
Small Blue	ANBL-M	50	ANBL	100
Medium Orange	ANOR-M	50	ANOR	100
Large Green	ANGR-M	50	ANGR	100

Composi-Tight® 3DFusion™

Sectional Matrix System

**Simply
the best!**



DENTAL ADVISOR
TOP AWARD

**SECTIONAL
MATRIX**



FX400



FX500



FX600

Hugs the curves – Soft-Face™ silicone tips with enhanced marginal ridge anatomy hug the matrix band to the tooth for flash free restorations



Stack it up – Tru-Stack™ technology allows placement of the orange ring (tall) over the blue ring (short) for easier MOD and multiple tooth restorations

It just keeps going...
Enhanced durability for extended ring life and greater tooth separation

Get a grip! All Composi-Tight® 3D Fusion™ separator rings incorporate Ultra-Grip™ retention extensions that anchor them securely to virtually any tooth. These rings stay where you place them!



Composi-Tight® 3DFusion™

Soft-Face™ silicone tips with enhanced marginal ridge anatomy

		
FX400 Short Ring 2/pk	FX500 Tall Ring 2/pk	FX600 Wide Prep Ring 2/pk

Composi-Tight 3D XR

The tenacious grip, along with enhanced Soft-Face™ technology and Dynamic Tip Angle™



3DXR
Soft-Face™ Extra Retention Rings
2/pk

Composi-Tight 3D

The Soft-Face™ 3D Ring provides maximum adaptation to the tooth



3D500
Soft-Face™ Rings
2/pk

Composi-Tight 3D Clear

The clear Soft-Face™ allows the curing light to be applied from both the buccal and lingual surfaces



3D600
Clear Soft-Face™ Rings
2/pk

Composi-TightGold

2x stronger than our Original G-Rings™



AU400
Standard Length Tines
3/pk



AU500
Long Length Tines
3/pk

Composi-Tight

The original G-Ring™ that started it all—made of polished stainless-steel



G100
Standard Length Tines
3/pk



G200
Long Length Tines
3/pk



Case using Composi-Tight® 3D Fusion™ Firm Matrix Bands

Dr. Anand Narvekar (Mumbai, India) utilized Garrison® Composi-Tight® 3D Fusion™ Firm Bands for deep margin elevation in this challenging onlay case.



Figure 1. FXH300 large molar band with extension was placed. The wedge was wrapped with multiple layers of teflon tape to sufficiently increase its size to allow it to seal the cervical portion of the matrix band in this extremely wide interproximal space.



Figure 2. Cervical area was built up with multiple layers of composite.

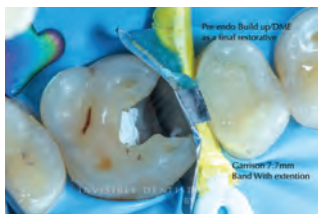


Figure 3. The process was repeated for the adjacent molar. The stiff nature of Composi-Tight® 3D Fusion™ Firm Bands allows apical pressure to be applied to the band without deformation of the matrix. It can be seated deeper than dead soft matrices for these types of procedures.



Figure 4. One-week post-bonding of onlays.

Composi-Tight® 3D Fusion™

Firm Matrix Bands



eZ-Place™ technology combines specially processed stainless steel with a proprietary matrix band forming process to yield Fusion Firm's remarkable handling characteristics. They resist deformation nearly 70% better than typical dead-soft bands yet are pre-contoured and super thin at 0.0015".

Fusion Firm:

- Nearly 70% better at resisting deformation!
- Super-thin at only 0.0015"
- Five ideal sizes!

Composi-Tight® 3D Fusion™ Firm

matrix bands with eZ-Place™ technology maintain their shape during placement making them *significantly easier* to insert!

Perfect for:

- Tight interproximal spaces!
- More conservative preps!
- First-time users and veterans alike!



0.0015"
thick

FXH Series

	Bicuspid	Bicuspid with deep cervical preps	Bicuspid and small molars	Molars	Molars with deep cervical preps
Composi-Tight® 3D Fusion™ Firm	Composi-Tight® 3D Fusion™ Firm matrix bands with eZ-Place™ technology for easier placement.				
thickness 0.0015"					
height	FXH100 4.3 mm	FXH150 4.3 mm w/ext 5.9 mm	FXH175 5.3 mm	FXH200 6.1 mm	FXH300 6.1 mm w/ext 7.7 mm

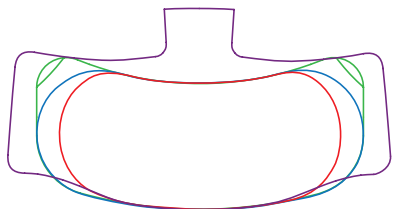
Description	Item	Qty.
Assorted Band Kit	FXHB04	300
Assorted Band Mini Kit	FXHB05	150
	Standard (-M)	Bulk
Item	Qty.	Qty.
FXH100	50	100
FXH150	50	100
FXH175	50	100
FXH200	50	100
FXH300	50	100

FX Series

	Composi-Tight® 3D Fusion™ Full Curve Bands have non-stick coating and an occlusal placement tab.				
thickness 0.0016"					
	FX100 4.0 mm w/ext 4.4 mm	FX150 4.1 mm w/ext 6.0 mm	FX175 5.0 mm w/ext 5.6 mm	FX200 5.4 mm w/ext 6.6 mm	FX300 6.0 mm w/ext 8.7 mm

Description	Item	Qty.
Assorted Band Kit	FXB01	420
Assorted Band Mini Kit	FXB02	210
	Standard (-M)	Bulk
Item	Qty.	Qty.
FX100	50	100
FX150	30	60
FX175	50	100
FX200	50	100
FX300	30	60

FX Series
FXH Series
SXR Series
B Series
M - SM - AU Series



Band Comparison Chart

SXR Series

	Pediatric	Bicuspid	Bicuspid with deep cervical preps	Bicuspid and small molars	Molars	Molars with deep cervical preps
Slick Bands™ XR	Slick Bands™ XR Matrices have non-stick coating and Grab-Tabs™ for easier placement.					
thickness 0.0016"						
height	NA	SXR100 4.6 mm	SXR150 3.8 mm w/ext 5.4 mm	SXR175 5.4 mm	SXR200 6.4 mm	SXR300 6.4 mm w/ext 8.6 mm

Item	Standard (-M)	Bulk
	Qty.	Qty.
SXR100	50	100
SXR150	30	60
SXR175	50	100
SXR200	50	100
SXR300	30	60

SM Series

Slick Bands™	Slick Bands™ Matrices have non-stick coating.					
thickness 0.0016"						
height	SM050 3.2 mm w/ext 4.2 mm	SM100 4.6 mm	SM150 3.8 mm w/ext 5.4 mm	SM175 5.5 mm	SM200 6.4 mm	SM300 6.4 mm w/ext 8.6 mm

Item	Standard (-M)	Bulk
	Qty.	Qty.
SM050	NA	60
SM100	50	100
SM150	30	60
SM175	50	100
SM200	50	100
SM300	30	60







AU Series

Composi-Tight Gold®	The Gold bands are the same as the Composi-Tight® bands.					
thickness 0.0015"						
height	AU050 3.2 mm w/ext 4.2 mm	AU100 4.6 mm	AU150 3.8 mm w/ext 5.4 mm	NA	AU200 6.4 mm	AU300 6.4 mm w/ext 8.6 mm

Item	Standard (-M)	Bulk
	Qty.	Qty.
AU050	25	50
AU100	50	100
AU150	25	50
AU200	50	100
AU300	25	50





To order standard packs, add a -M after the item #.

M Series

	Pediatric	Bicusps	Bicusps with deep cervical preps	Bicusps and small molars	Molars	Molars with deep cervical preps
Composi-Tight®	Composi-Tight® bands are contoured in 3 dimensions to provide an accurate contact at the tooth's natural height of contour.					
thickness 0.0015"						
height	M050 3.2 mm w/ext 4.2 mm	M100 4.6 mm	M150 3.8 mm w/ext 5.4 mm	M175 5.5 mm	M200 6.4 mm	M300 6.4 mm w/ext 8.6 mm




Item	Standard (-M)	Bulk
	Qty.	Qty.
M050	25	50
M100	50	100
M150	25	50
M175	50	100
M200	50	100
M300	25	50

B Series

Composi-Tight® Original	The original bands have a slightly shorter length.					
thickness 0.0015"						
height	B050 3.2 mm w/ext 4.2 mm	B100 4.6 mm	B150 3.8 mm w/ext 5.4 mm	NA	B200 6.4 mm	B300 6.4 mm w/ext 8.6 mm

Item	Standard (-M)	Bulk
	Qty.	Qty.
B050	25	50
B100	50	100
B150	25	50
B200	50	100
B300	25	50

MC Series

Composi-Tight® 3D Clear	Clear bands are transparent and translucent to allow for trans-enamel polymerization without interference from metal bands.					
thickness 0.0020"						
height	NA	MC100 5.0 mm	NA	MC175 5.9 mm	MC200 6.8 mm	NA

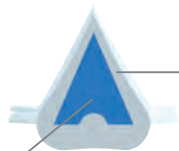
Item	Standard (-M)	Bulk
	Qty.	Qty.
MC100	50	100
MC175	50	100
MC200	50	100

To order standard packs, add a -M after the item #.

Composi-Tight® 3D Fusion™

Ultra Adaptive Wedges

Combining Soft-Face™ adaptive materials, a firm inner core and advanced mechanical features to produce a wedge that truly works. Every time.



A real softie Composi-Tight® 3D Fusion's Soft-Face™ over-mold allows the wedge to do what no other wedge can truly do - actually adapt to interproximal irregularities.

Tough on the inside

The firm inner skeleton allows for easy insertion and tooth separation just like a traditional wedge.



Fins with serious function
Soft retentive fins smoothly fold down during wedge insertion and then spring back when clear of the interproximal space. Wedge back-out is a thing of the past.



Composi-Tight® 3D Fusion™ Wedge

Description

Composi-Tight® 3D Fusion™ Wedge Kit
Composi-Tight® 3D Fusion™ Wedge Kit

Item

FXK4
FXK4-M

Qty.

400
200

Refills

X-Small Yellow
Small Blue
Medium Orange
Large Green

Item

FXYL-M
FXBL-M
FXOR-M
FXGR-M

Standard Qty.

50
50
50
50

Item

FXYL
FXBL
FXOR
FXGR

Bulk

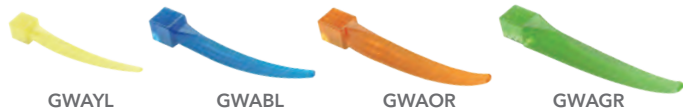
Qty.

100
100
100
100

A+Wedge®

Controls Gingival Bleeding

Controls gingival bleeding with an aluminum sulfate coating that has an astringent effect on the gingiva, improves clarity of restoration area and eliminates need to apply an astringent separately



Description
A+Wedge® Kit

Item Qty.
GWAK4 200

Bulk

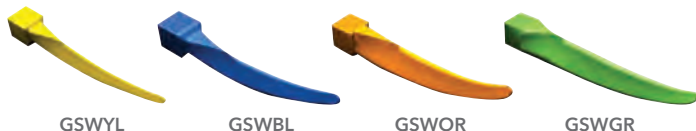
Refills
X-Small Yellow
Small Blue
Medium Orange
Large Green

Item Qty.
GWAYL 100
GWABL 100
GWAOR 100
GWAGR 100

G-Wedge™

Perfect wedge. Perfect contact.

If you prefer traditional wedge placement with either a hemostat or cotton pliers, G-Wedges give you the same great shape as WedgeWands®, just without the applicator wand.



Description
G-Wedge™ Kit

Item Qty.
GWK4 400

Bulk

Refills
X-Small Yellow
Small Blue
Medium Orange
Large Green

Item Qty.
GSWYL 100
GSWBL 100
GSWOR 100
GSWGR 100

Item Qty.
GWYL 300
GWBL 300
GWOR 300
GWGR 300

WedgeWands®

WedgeWands® are designed to twist off the wand, but many prefer to leave it attached to help retract the cheek and for easy removal after the procedure is complete.



Description
WedgeWands® Kit

Item Qty.
WK4 400

Standard

Bulk

Refills
X-Small Yellow
Small Blue
Medium Orange
Large Green

Item Qty.
SWYL 100
SWBL 100
SWOR 100
SWGR 100

Item Qty.
WYL 300
WBL 300
WOR 300
WGR 300

SoftWedge™

Superior adaptation and seal

Soft Wedges™ compress during insertion, then swell to help fill voids to ensure that your preparations stay clean and dry—an absolute must for today's bonded restorations!



Description
Soft Wedge™ Kit

Item Qty.
WDK4 400

Bulk

Refills
X-Small Yellow
Small Blue
Medium Orange
Large Green

Item Qty.
WSDYL 100
WSDBL 100
WSDOR 100
WSDGR 100

Item Qty.
WDYL 300
WDBL 300
WDOR 300
WDGR 300

Great technique tips and product help are only a click away!

Join thousands of subscribers on our YouTube channel and get notified instantly when new content is posted.

The Garrison® YouTube channel is NOT a collection of infomercials. It's all about helpful information on a wide variety of topics. From short two-minute tips on how to reduce flash on Class IIs, to more in depth live patient case presentations, the Garrison® channel delivers great content.

Go to youtube.com/garrisdental or search Garrison Dental on youtube and subscribe today!



Speaking of great content...

Get CE credits direct from Garrison®!

Go to the Learning Center at garrisdental.com to see a list of pre-recorded and upcoming live webinars - many with available CE.

Register for an online account on our website to sign-up for CE credits and manage your CE courses.

FENDERWEDGE®

Interproximal Tooth Shields

Pre-separate and Protect

FenderWedge® prevents damage to the adjacent tooth and gingiva that can occur during Class II preparations.

FenderWedge® is a combination of a steel plate and a plastic wedge. Inserted into the interproximal space, it protects the tissue and separates the teeth, thus simplifying the application of a matrix.

FenderWedge®

Description

FenderWedge® Kit

Item Qty.
TSK01 80

Refills

		Standard		Bulk
	Item	Qty.	Item	Qty.
X-Small Purple	TSPR-M	30	TSPR	60
Small Orange	TSOR-M	30	TSOR	60
Medium Green	TSGR-M	30	TSGR	60
Large Yellow	TSYL-M	30	TSYL	60

FenderWedge is NOT a sectional matrix system nor does it replace the use of a matrix band.



Clinical Tip



Place FenderWedge® prior to preparation to pre-separate and protect the adjacent teeth.

The plastic wedge—not just the metal shield—should firmly engage the interproximal surfaces of the teeth. This will provide the optimum pre-separation force and hold the FenderWedge® securely in place. (Figures 1 and 2)

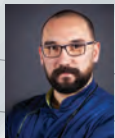
Figure 3 clearly shows marks from the bur along the shield. Much better to have those on the shield than on the adjacent tooth!

Once the preparation is complete, remove the FenderWedge® and place your matrix.

Dentistry and photos courtesy of Dr. Rob Ritter, Jupiter, Florida

Visit garrissondental.com/ learning to see Dr. Ritter's full case presentation.





Case using FitStrip™ Subgingival Trimmers and Finishers

Doctors R. Becciani and V. Attanasio of Italy present a host of cases highlighting the unique attributes of FitStrip™.



Figure 1. Interproximal reduction for orthodontic reasons. The color coded, double sided abrasive strips work in concert with the calibrated gauges to provide the appropriate interproximal space quickly and accurately for aligner systems.



Figure 3. Separate inadvertently bonded together adjacent teeth. The very thin serrated FitStrip™ (gray barrel) is incredibly useful for separating teeth without damaging the interproximal surfaces or losing the contact point.



Figure 2. Removal of excess bond and cement on indirect restorations. Excess bond or cement in the particularly delicate cervical area can be achieved without iatrogenic trauma to the patient.



Figure 4. Prepare the interproximal space for minimally invasive ceramic veneers. The FitStrip™ system allows for the calibrated and minimal opening of the interproximal space.

To see more of how doctors Becciani and Attanasio use FitStrip™ as well as FitStrip™ videos, go to our website at garrisondental.com and click on FitStrip™.

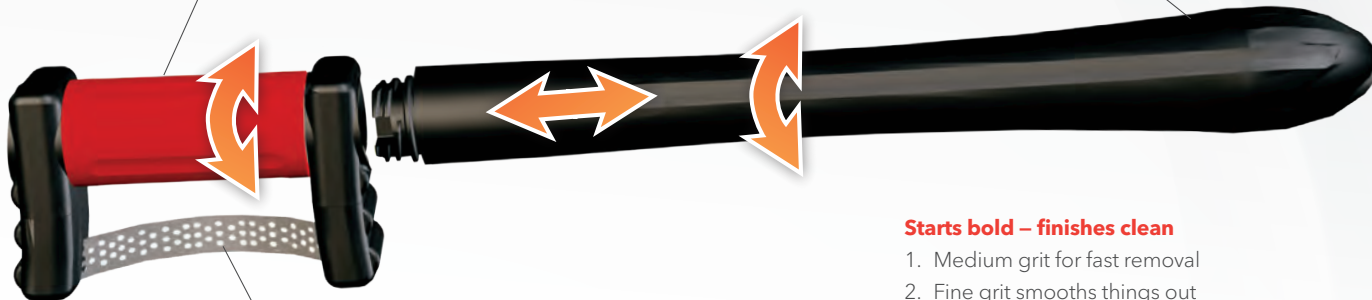


Flexible
Interproximal finishers with a
Twist

FitStrips are a complete line of interproximal trimmers and finishers from the company that invented tight interproximal contacts, **Garrison® Dental Solutions**.

Do the Twist! Twist the color-coded barrel to adjust FitStrips' curvature and it's automatically locked in place.

One handy handle! FitStrip's simple, attachable handle makes a world of difference for both clinician ease-of-use and patient comfort.



Ready for a marathon! FitStrips are very durable and long lasting. They stay sharp and ready to go even after multiple autoclave cycles.

Starts bold – finishes clean

1. Medium grit for fast removal
2. Fine grit smooths things out
3. Super fine strips put the perfect finishing touch on things



Flexible
Interproximal finishers with a
Twist



Most popular! The FitStrip™ kit that started it all!

- Primary Function: Contouring Composites and IPR up to .30mm.
- Durable diamond abrasive on just one side to protect adjacent teeth
- The FitStrip™ serrated saw is the PERFECT instrument to separate accidentally bonded teeth and reduce over-tight contacts

FitStrip™ Starter Kit

FPSK01 contains:, 2 handles, 2 serrated, 4 single sided (1 of each .08 mm, .10 mm, .13 mm, .18 mm)
4 double sided (1 of each .11 mm, .15 mm, .21 mm, .30 mm)



Your Complete Solution for Interproximal Reduction (IPR)!

- Primary Function: IPR when .40mm and .50mm are needed, yet can still be used to contour composites
- IPR gauges for exact reduction
- Attachable handle for greater ease of use and patient comfort

Universal Kit

FPSK04 contains:, 2 handles, 1 IPR gauge, 4 single sided (1 of each .08 mm, .10 mm, .13 mm, .18 mm)
6 double sided (1 of each .11 mm, .15 mm, .21 mm, .30 mm, .40 mm, .50 mm)



Subgingival FitStrips are the ideal solution for the cervical area!

- Primary Function: Use with Composites, both for contouring and accessing cervical areas to remove overhangs or excess cements.
- Only 2.5mm height keeps abrasive below the contact point
- Safety zone protects contacts during insertion
- Extra thin at .05mm

FitStrip™ Subgingival Finishing and Single Sided Kit











FPSK08 contains:, 2 handles, 10 Strips: 2 subgingival super fine, 2 subgingival fine, 1 subgingival medium, 1 serrated saw, 1 each single sided .08 mm, .10 mm, .13 mm, .18 mm



FitStrips – a complete line of interproximal trimmers and finishers from the company that invented tight interproximal contacts, **Garrison Dental Solutions.**

Kits All kits come in a package of 10 FitStrips with 2 handles.

Description/Contents	Item	Primary Use
Starter Kit for finishing/polishing 2 serrated 4 single sided (1 of each .08 mm, .10 mm, .13 mm, .18 mm) 4 double sided (1 of each .11 mm, .15 mm, .21 mm, .30 mm)	FPSK01 (shown on page 22)	Finishing composites
Universal Kit for IPR and finishing/polishing 1 IPR gauge 4 single sided (1 of each .08 mm, .10 mm, .13 mm, .18 mm) 6 double sided (1 of each .11 mm, .15 mm, .21 mm, .30 mm, .40 mm, .50 mm)	FPSK04 (shown on page 22)	Finishing composites and IPR
IPR Kit 1 IPR gauge 10 double sided (2 of each .11 mm, .21 mm, .30 mm, .40 mm, .50 mm)	FPSK05	IPR
Subgingival Finishing Kit 3 subgingival super fine, 3 subgingival fine, 3 subgingival medium, 1 serrated saw	FPSK07	Subgingival
Subgingival Finishing and Single Sided Kit 2 subgingival super fine, 2 subgingival fine, 1 subgingival medium, 1 serrated saw, 4 single sided (1 of each .08 mm, .10 mm, .13 mm, .18 mm)	FPSK08 (shown on page 22)	Subgingival and finishing composites

Refills	Single Sided	Double Sided
Super fine 15 Micron 	FPSXFSS 0.08 mm thick	FPSXFDS 0.11 mm thick
Fine 30 Micron 	FPSFSS 0.10 mm thick	FPSFDS 0.15 mm thick
Medium 46 Micron 	FPSMSS 0.13 mm thick	FPSMDS 0.21 mm thick
Coarse 90 Micron 	FPSCSS 0.18 mm thick	FPSCDS 0.30 mm thick
Serrated 	FPSSAW 0.05 mm thick	
Medium 46 Micron 		FPSTMDs 0.40 mm thick
Medium 46 Micron 		FPSXTMDs 0.50 mm thick
Super fine 15 Micron 	FPSGXFSS 0.08 mm thick	N/A
Fine 30 Micron 	FPSGFSS 0.10 mm thick	N/A
Medium 46 Micron 	FPSGMSS 0.13 mm thick	N/A
FitStrip™ replacement handles (2-pack) FPSHANDLE-2		
IPR Gauge FPSGAUGE		





Mini Polishers for Composite

Rally gets you to the finish line faster!

The composite finish line that is. One lightning fast step will put a beautiful satin finish on posterior restorations or add the gray high shine polisher for a lustrous gloss on facials and anteriors. And if you want to be quick off the starting line, use the blue coarse grit for rapid reduction and shaping. Rally Mini Polishers get you across the finish line and on to your next patient in record time!



Get to the point - Every time!

Single patient Rally means that you get a clean, fresh, properly shaped polisher every time.



A clean get-a-way!

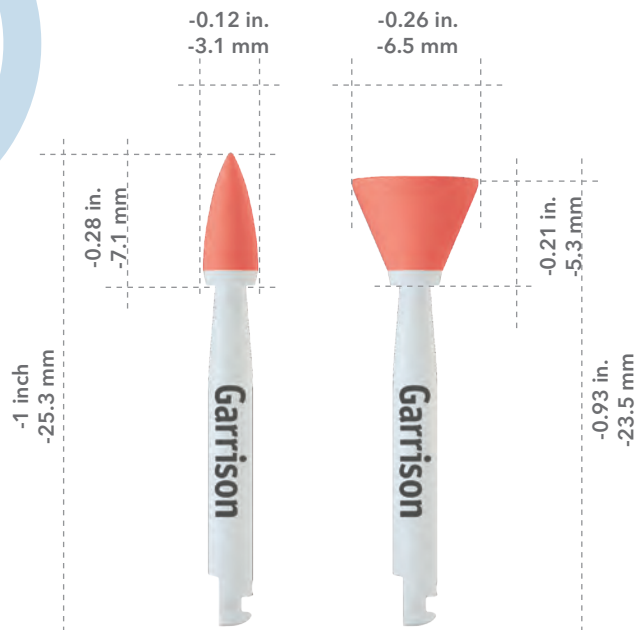
You don't want to leave a trail of crumbs or spattered polishing paste on the track. Rally's diamond impregnated high shine final polishers won't crumble during use and don't require paste to create a beautiful, durable shine.



Mini and mighty!

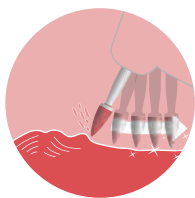
Rally's small size and tapered shaft create a truly agile polisher capable of reaching the smallest anatomical features without blocking your visibility.





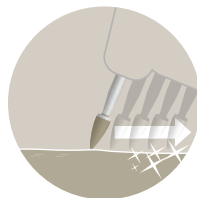
**Remove -
Choose the Blue
(silicon carbide)**

Polishers for fast
removal and
contouring



**Smooth -
Choose the Red
(aluminum oxide)**

Polishers for
smoothing and silky
shine



**Shine -
Choose the
Gray (diamond
impregnated)**

Polishers for ultra
high shine



*Slow speed right
angle latch shank.
Use with water.*

Rally™

Item	Description	Qty.
FPCCK01	Composite Polisher Complete Kit	60 (10 each)

Item	Refills	Qty.
FPCCK010	Blue coarse grit point composite polisher	30
FPCCK040	Blue coarse grit cup composite polisher	30
FPCCK010	Red medium grit point composite polisher	30
FPCCK040	Red medium grit cup composite polisher	30
FPCCK010	Gray fine grit point composite polisher	15
FPCCK040	Gray fine grit cup composite polisher	15



Intra-oral Adjustment/Polishing
for Zirconia and Lithium Disilicate

Adjust and Polish Zirconia and
Lithium Disilicate the **eZr** Way!

eZr Intra-oral Adjustment:



- **No chatter, chipping or microfracture** - Unlike diamonds bonded directly to a hard metal shaft, eZr's rubber substrate cushions the diamonds to prevent damage to the restoration.
- **No heat build-up** - The carefully engineered substrate does not transfer heat during use.
- **FAST!** - eZr's coarse grit blue grinders make your adjustments fast and convenient.

eZr Intra-oral Polishing:



- **Unparalleled smooth polish** - Don't take our word for it! - "The eZr system is the only one I've tried that polishes zirconia to smooth!" Todd Brower, DDS, Holland, Michigan.
- **Increased physical stability** - Highly polished zirconia and lithium disilicate is stable and non-abrasive to opposing dentition.
- **No paste required** - Forget the mess and expense of polishing pastes. eZr™ is all you need.
- **No water required** - No need to use water when polishing. Water is only required for high speed.

eZr™ is a three-step diamond polishing system for the processing of zirconium oxide and lithium disilicate. The grinders and polishers are ideal for adjusting and correcting chairside restorations such as inlays, onlays, veneers and crowns.



*Slow speed right
angle latch shank
Steam autoclaveable*



1

Start by gross adjusting and contouring using the blue coarse grit grinders. Use the flat end taper for occlusal/labial/lingual/buccal surfaces and the disc for interproximal surfaces.













2

Use the green medium grit polishers for smoothing and pre-polishing. Use the point for the occlusal grooves, the cup for labial/lingual/buccal, and the disc for interproximal surfaces.



3

Use the orange fine grit polishers for high gloss polishing. Use the point for the occlusal grooves, the cup for labial/lingual/buccal, and the disc for interproximal surfaces.

Item	Description	Qty.
FPZK01	Complete system kit Gross removal, smoothing, pre-polishing, and high gloss polishing	2 grinders 6 polishers
FPZC030	 Blue coarse grit disc Gross removal	5/pk
FPZC010	 Blue coarse grit flat end taper Gross removal	5/pk
FPZM010 (not in kit)	 Green medium grit small point polisher Smoothing and pre- polishing	5/pk
FPZM020	 Green medium grit large point polisher Smoothing and pre- polishing	5/pk
FPZM030	 Green medium grit disc polisher Smoothing and pre- polishing	5/pk
FPZM040	 Green medium grit cup polisher Smoothing and pre- polishing	5/pk
FPZF010 (not in kit)	 Orange fine grit small point polisher High gloss polishing	5/pk
FPZF020	 Orange fine grit large point polisher High gloss polishing	5/pk
FPZF030	 Orange fine grit disc polisher High gloss polishing	5/pk
FPZF040	 Orange fine grit cup polisher High gloss polishing	5/pk

Cases using other matrix systems



Images courtesy of Dr. Julio Maya



Images courtesy of Dr. Dory Stutman

Reel Matrix™

TESTIMONIALS

"Using a matrix system like Reel Matrix can enable them (doctors) to quickly and precisely place anatomically correct Class II posterior composite restorations that demonstrate exceptional contacts."

Dr. Dory Stutman

"We produced the margin elevation band to facilitate the deep margin elevation technique which is becoming increasingly popular with adhesive dentistry. Properly performed, this technique allows for a conservative indirect restoration to be completed without additional invasive treatments. The use of this band and unique matrix shape allows the band to form a tight seal in deeper cervical areas where other bands would usually be unable to reach."

*Dr. Matthew A. Nejad, DDS
Beverly Hills, CA*

Margin Elevation Band



Images courtesy of Dr. Matthew A. Nejad, DDS, Beverly Hills, CA

PerForm™

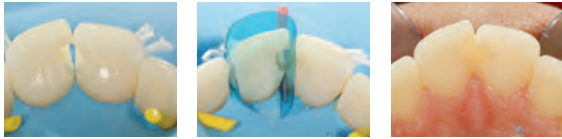


Images courtesy of Dr. Jack D. Griffin, Jr., DMD, MAGD, Weldon Spring, MO

"To ensure a tight contact, a bulk fill flowable was placed in one proximal box at a time and the mylar held against the adjacent tooth with a PerForm™ proximal contact instrument. This ensures that the contact is tight and well-formed while light curing though it."

*Dr. Jack D. Griffin, Jr., DMD, MAGD
Weldon Spring, MO*

Cases using anteriors/cervicals



Images courtesy of Dr. Zunzarren, DDS



Images courtesy of Dr. Abdi Sameni, DDS

VariStrip™

How can you produce a natural curvature for anterior composites and eliminate black triangles? Check out Garrison's curved "Varistrips" to recreate the natural interproximal anatomy for anterior teeth.

- Helps avoid incorrect flat embrasures, black triangles and food traps that can be caused by old-fashioned straight mylars.
- No need for wedges on subgingival fillings, as the contours naturally close off the apical aspects for you.
- Excellent for class IVs, diastema closures, etc.
- Variable height allows you to slide each strip in until it precisely matches the tooth height before cutting off excess.
- The blue tint does not affect cure, but ends the annoyance of losing clear strips on patient bibs or bracket tables.

Blue View VariStrips—a must-have super-simple product for every dental office.

Dr. Michael Curtis, Bridgeport, CT, USA

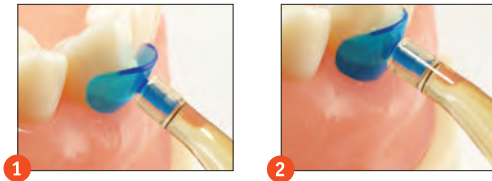
Clinical Tip

After using your preferred bonding procedure, place the restorative material into the preparation in advance of using the cervical matrix.

Place the cervical edge of the matrix against the tooth (Fig. 1).

While pressing the gingival edge of the matrix firmly against the tooth, roll the matrix onto the tooth (Fig. 2). Excess material will be expressed from the occlusal edge of the matrix rather than subgingivally, greatly simplifying clean up.

Cure directly through the matrix.



ReelMatrix

Real Easy. Real Tight. Real Fast!

For all posterior restorations!

1 Real Easy:

The reels pop into the handle without any fuss! Press the reel into the handle and retract the grippers to lock the reel in place. Plus, if you use the regular matrices (yellow hubs) they can be easily pushed through contacts.

2 Real Tight:

Tight contacts and excellent contour are what Reel Matrix is all about. These thin matrices are pre-contoured in three dimensions and when combined with anatomical wedges and separator rings, the result is amazingly tight contacts at the natural height of contour.

3 Real Fast:

Pre-loaded reels mean you can just lock them in and go. The retainerless design greatly speeds up quadrant work while improving visibility and patient comfort. Add an FX500 separator ring and you virtually eliminate buccal and lingual flash.



See page 34
for Dr. Rosenfeld's
Margin Elevation case.

Margin Elevation Technique restores deep caries without the trauma.

Margin elevation requires a matrix that will properly adapt and isolate the subgingival area. This is not possible with traditional matrix materials (Figure A). The narrow Margin Elevation Band, with its enhanced conical design, is able to slide down subgingivally and properly seal this area (Figure B).

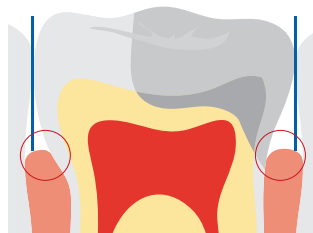


Figure A

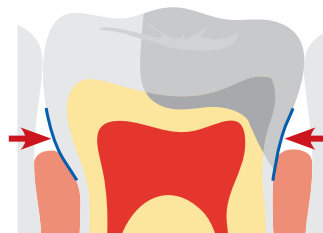


Figure B

For the complete margin elevation
technique, go to garrissdental.com



RM500H
Margin elevation



RM100D
5mm deadsoft



RM200D
6.3mm deadsoft



RM100H
5mm regular



RM200H
6.3mm regular



RM100B
5mm blue



RM200B
6.3mm blue

The Reel Matrix™ is the ideal delivery system for the Margin Elevation Band. Its extremely small size and light weight prevents the accidental dislodgement that can occur with long, cumbersome metal retainers.



Margin elevation band is .002" thin. Super-thin dead-soft bands are .0012" thin. Regular bands are .0015" thin and can be placed through existing contacts. A Blue View cure-through option at .0029" thin is available if you prefer trans-enamel curing.

ReelMatrix

Real Easy. Real Tight. Real Fast!

Item	Description
RMK05	Kit Contains 80 matrices (20 RM500H, 10 ea. RM100D, RM200D, RM100H, RM200H, RM100B, RM200B) 1 tensioning instrument 1 PerForm™ instruments (set of 2)

Refills		Qty.
RM500H	Margin elevation band	50
RM100D	5mm dead-soft matrices	50
RM200D	6.3mm dead-soft matrices	50
RM100H	5mm regular matrices	50
RM200H	6.3mm regular matrices	50
RM100B	5mm blue matrices	50
RM200B	6.3mm blue matrices	50
RMR100	5.9mm empty reel	100
RMR200	6.7mm empty reel	100
RMH-100	Tensioning instrument	

IMPORTANT ACCESSORIES

PerForm™ Proximal Contact Instrument
(included in RMK05 kit)

Page 35

Great for core build-ups

SlickBands™

Tofflemire-style

Non-stick technology developed by Garrison®: Modern bonding agents can adhere to uncoated matrix bands- Slick Bands™ slide right out.

Reaches over to the adjacent tooth more easily to help you create broader, deeper contacts.

- Extremely wide preps are simplified.
- Improved visibility for core buildups.



**Proprietary
Right Curve™
design:**

The increased curvature of the all-new **Right-Curve matrix band** produces outstanding gingival seal and reaches over to adjacent teeth easier for broader, deeper contacts. This creates a significantly increased funnel-shaped cone when wrapped around a tooth. It's the right choice for many restorations.



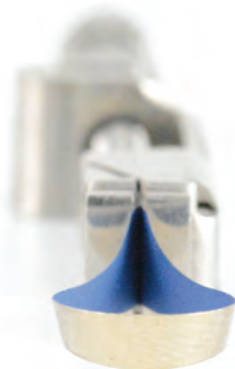
Tighter gingival seal is beneficial for all restorations.

Traditional band with narrow 'funnel'.



Margin Elevation Band

The deep margin elevation technique is a useful non-surgical approach to treating deep localized margins.



A margin elevation matrix will give you the best gingival adaptation and contour for the deep margin areas. It is trimmed in height to allow improved adaptation to deep margin areas.

"We produced the margin elevation band to facilitate the deep margin elevation technique which is becoming increasingly popular with adhesive dentistry. Properly performed, this technique allows for a conservative indirect restoration to be completed without additional invasive treatments. The use of this band and unique matrix shape allows the band to form a tight seal in deeper cervical areas where other bands would usually be unable to reach."

*Matthew A. Nejad, DDS
Beverly Hills, CA*

Slick Bands™ Tofflemire-style Matrices

Clinical Tip: Use dead-soft green bands when contact is COMPLETELY broken with adjacent teeth for maximum burnishability. When contact is NOT broken with adjacent teeth, use regular gray bands.

IMPROVED Dead-soft Bands

with non-stick coating

Regular Bands

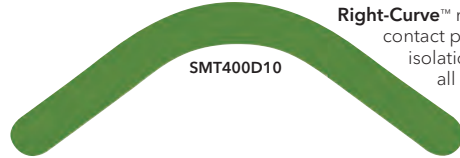
with non-stick coating



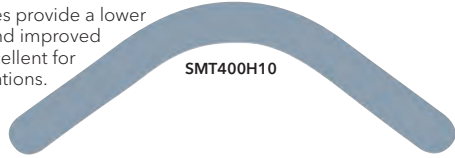
#1 Universal for general restorations



SMT200H10



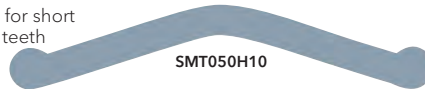
Right-Curve™ matrices provide a lower contact point and improved isolation. Excellent for all restorations.



SMT400H10



#13 Pedodontic for short and primary teeth



SMT050H10



#2 Sub-gingival for deep restorations



SMT300H10

Tofflemire-style matrices are .0014" thick
Margin elevation matrices are .002" thick



SMT500H10
Margin Elevation Band

See page 34
for Dr. Rosenfeld's
Margin Elevation case.



SMTK06

Slick Bands™

Description

Slick Bands Kit
300 Assorted Slick Bands
100 G-Wedges
Perform instruments (1 set; shown on page 35)

Item

SMTK06

Dead Soft Bands

Item	Qty.
#1 Universal Tofflemire	50
Right-Curve	50
#13 Pedodontic	50
#2 Sub-gingival	50

Standard (-M)	Bulk
Qty.	Qty.
50	100
50	100
50	100
50	100

Regular Bands

Item	Qty.
#1 Universal Tofflemire	50
Right-Curve	50
#13 Pedodontic	50
#2 Sub-gingival	50

Standard (-M)	Bulk
Qty.	Qty.
50	100
50	100
50	100
50	100

Regular Bands

Item	Qty.
Margin elevation band	50

Standard (-M)	Bulk
Qty.	Qty.
50	100

To order standard packs, add a -M after the item #.



Case using a technique known as Deep Margin Elevation (DME) or cervical margin relocation that has been evolving since at least the 1990s

Dr. Robert Rosenfeld (Westwood, New Jersey) case utilizing the Garrison® Reel Matrix™ margin elevation band.



Figure 1. Removal of the amalgam and excavation revealed that the decay extended quite far subgingivally on both the mesial and distal.



Figure 2. After placing a self etching primer and adhesive, I applied several small increments of a bulk fill flowable material, enough to rise above the gingiva.

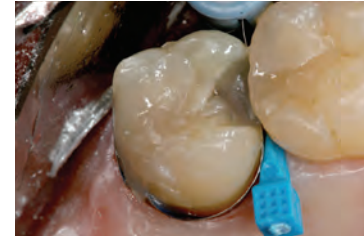


Figure 3. I then did a freehand layered buildup of the remainder of the restoration, with the exception of the mesial box, using a light-cured core buildup material.

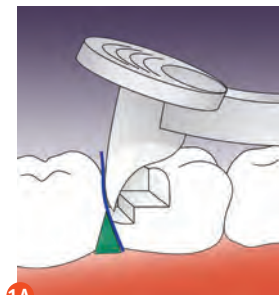


Figures 4 and 5. At this point, I removed the Margin Elevation band and placed a sectional matrix band, wedge and separating ring on the mesial (Composi-Tight® 3D Fusion™, Garrison® Dental) and completed the buildup to create good contour and contact until such time that the tooth is prepared for a crown.



Figure 6. After trimming the slight excess material on the distal with a finishing carbide and adjusting the occlusion, here is the finished restoration.

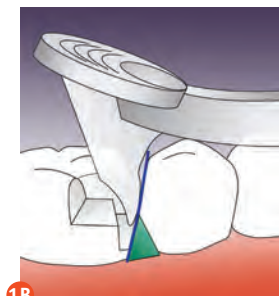
How PerForm™ works:



1A

STEP 1:

Place the first composite increment. Press PerForm™ into the uncured composite increment and either push (distal; fig. 1A) or pull (mesial; fig. 1B).



1B

STEP 2: Place the curing light directly on the Fresnel lens and cure.



2

PerForm™

Proximal Contact Instruments

PerForm puts you in control.

- Improves contacts with any matrix system
- Control the height and breadth of contacts
- Increase the tightness of contacts
- Unique lens controls curing light diffusion
- Steam autoclave only

PerForm™

Item	Kit	Qty.
CFK01	PerForm (1/ea. size)	2/pk
CF100	1.1 mm Small Instruments	2/pk
CF200	2 mm Large Instruments	2/pk



"To ensure a tight contact a bulk fill flowable was placed in one proximal box at a time and the mylar held against the adjacent tooth with a PerForm™ proximal contact instrument. This ensures that the contact is tight and well-formed while light curing through it."

*Dr. Jack D. Griffin, Jr., DMD, MAGD
Weldon Spring, MO*



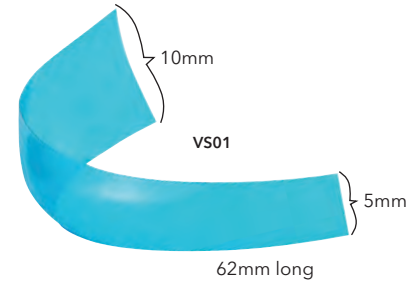
Photo
courtesy of
David S. Hornbrook, DDS, FAACD
International Lecturer and
Private Practice, San Diego, CA

Curved Form/tapered: Provides the optimum curvature and band height for virtually every anterior restoration.

Blue Tint: Provides contrast between matrix and tooth structure without compromising composite polymerization.

Our Most Popular Anterior Matrix

BlueView™
VariStrip™
Contoured Anterior Matrices



The Blue View™ VariStrip™ is a revolutionary contoured anterior matrix providing the optimum curvature and band height for virtually every anterior restoration. The 0.0020" thin plastic anatomical strip is tapered from one end to the other. You can place the strip interproximally and then slide it until the tooth height is perfectly matched. The pre-contouring easily recreates the occluso-gingival anatomy, avoiding flat embrasures.

Blue View™ VariStrip™

Item	Kit	Qty.
VS01	VariStrip	100

BlueView™

Cervical Matrices

"I love the Blue View Cervical Matrix! It works so well. My assistants love watching me use this system. The patients love the excitement in our faces. It makes the process easy and fast. Gotta love that! We are also hooked on using the ReelMatrix. Thanks so much for making great products."

Cynthia Brattesani, DDS,
San Francisco, CA, USA



Flexible

- adapts to individual anatomy for improved contours
- use it to directly compact the composite into the restoration
- thin edges allow excess composite to flow out for improved anatomy

Blue Tint

- provides contrast between matrix and tooth structure
- does not compromise composite polymerization

Convenient!

- protects the restoration from contamination
- eliminates time spent hand sculpting
- eliminates air-inhibited layer
- reduces finishing time
- 7 sizes for a perfect fit
- Gingival Retractor included!

KCMK1 INCLUDES

- 275 Assorted Matrices
- 1 Matrix placement Instrument
- 1 Gingival Retractor



MATRICES INCLUDED:

- Anterior/Premolar KCMA60 - 50 pcs
- Molar KCMA70 - 50 pcs
- KCMA10 - 35 pcs
- KCMA20 - 35 pcs
- KCMA30 - 35 pcs
- KCMA40 - 35 pcs
- KCMA50 - 35 pcs

Blue View™ Cervical Matrices

Item

KCMK1

Description

Assortment Kit w/Instruments

Refills

KCMA10

Refill 100 pack

KCMA20

Refill 100 pack

KCMA30

Refill 100 pack

KCMA40

Refill 100 pack

KCMA60

Refill 100 pack

KCMA70

Refill 100 pack

KCMINST1

Placement Instrument



Composi-Tight® Matrix Forceps

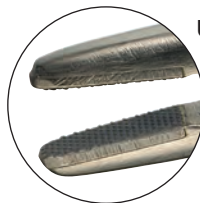
Precise Placement, Unbeatable Grip.



Check out the GRIP! Effortlessly remove the matrix bands that otherwise would be a struggle.



Precise Placement: The tips have a 75-degree angle with an occlusal-lingual orientation, providing a more appropriate placement angle than cotton forceps. The petite, carbide tips allow the matrix to be grasped at its upper edge to prevent distortion of the interproximal area of the band.



Unbeatable Grip: The tungsten carbide tips provide exceptional grip and tactile control for tough access cases.

Matrix Forceps

BFA-1

Angled tip for occlusal placement

Composi-Tight® 3D Fusion™

Composi-Tight® 3D Fusion™ includes dentistry's premier heavy-duty stainless steel ring placement forceps. Regardless of your hand size or strength, Composi-Tight® 3D Fusion™ forceps will give you incredible control for the precise placement of super-strong separator rings over even the widest molars.

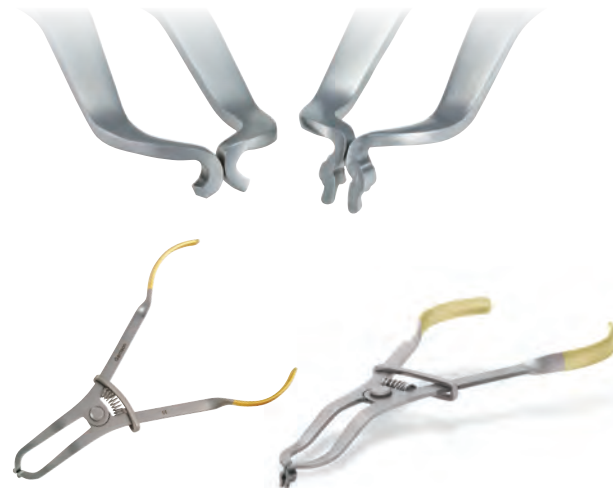
**Composi-Tight® 3D Fusion™
Ring Placement Forceps**
FXP01

Composi-Tight® 3D Fusion™ forceps will work with virtually any ring from any manufacturer.



Ring Placement Forceps

Holds all your sectional matrix system rings.



Ring Placement Forceps
AUMRDF-100

Universal Forceps
for placing rubber dam
clamps and rings
UNVF-100



Composite Instruments Nonstick titanium-nitride coated

Our multi-function instruments have double condenser configurations and carving blades on opposite ends. Now you can place, pack, shape and carve your way to perfectly contoured composite restorations without ever having to switch instruments!

- Large-diameter, lightweight handles for improved ergonomics.
- Provides non-stick surface for placement and shaping of composites.
- 40% smoother than stainless steel for a non-porous, non-stick surface.
- Withstands diverse cleaning/sterilization methods, including ultrasonic cleaning.



“Skippy Special”

TN008

Item	Description
TN008	“Skippy Special” 2 condensers, ball burnisher, blade, acorn



5-in-1

TN009

Item	Description
TN009	5-in-1 Multi-Function Instrument 2 blades, 2 condensers, acorn

Item Description

- TN001 Medium Blades**
 Placement of composite material
 Gingival retraction to sculpt under free margins
 Burnishing matrix bands



- TN002 Medium Blade with Medium Plugger**
 Contouring small Class I, II, V
 Packing composite material into conservative preparations
 Burnishing matrix bands



- TN003 Medium Blade with Large Plugger**
 Contouring large Class I, II, V
 Packing composite material into large preparations
 Convex plugger tip minimizes pullback of composite material



Item Description

- TN004 Extra Thin Blades**
 Reach under margins to hone and sculpt
 Sculpting interproximally
 Packing cord in gingival crevice



- TN005 Long Extra Thin Blades**
 Allows additional access for hard-to-reach
 posterior contouring and shaping
 Sculpting interproximally
 Packing cord in gingival crevice











- TN006 Small/Medium Multi-Function Plugger**
 Placement of composite material in smaller Class II and III
 Packing material toward gingival seats
 Carving occlusal anatomy with acorn carver



Matrix Selection Guide

Being the Matrix Company, one of the most common questions we get is “which matrix do I use where?” While personal preference will drive much of the decision process, below is a chart that can provide a good starting point.

Procedure	Recommended Materials	Page	Special Notes
Distal of canine, short or malpositioned 	Composi-Tight® 3D Fusion™ Sectional Matrix Kit	4–5	MOST POPULAR! Separator rings designed to hold firmly on tough cases.
	Reel Matrix™—Metal or Blue View	30–31	Retainerless Tofflemire-style matrices, contoured and easy to apply.
	Slick Bands™ Tofflemire-Style Matrices	32–33	Traditional Tofflemire-style with non-stick coating.
Conservative Class II 	Composi-Tight® 3D Fusion™ Sectional Matrix Kit	4–5	MOST POPULAR! Superior contacts with minimal flash.
	Reel Matrix™—Metal or Blue View	30–31	Retainerless Tofflemire-style matrices, contoured and easy to apply.
	Slick Bands™ Tofflemire-Style Matrices	32–33	Traditional Tofflemire-style with non-stick coating.
Slightly wide and/or deep 	Composi-Tight® 3D Fusion™ Sectional Matrix Kit	4–5	MOST POPULAR! Superior contacts with minimal flash.
	Reel Matrix™—Metal or Blue View	30–31	Retainerless Tofflemire-style matrices, contoured and easy to apply.
	Slick Bands™ Tofflemire-Style Matrices	32–33	Traditional Tofflemire-style with non-stick coating.

Procedure	Recommended Materials	Page	Special Notes
Large Class II with missing cusps 	Composi-Tight® 3D Fusion™ Sectional Matrix Kit—Green Wide Prep Ring	4–5	EXCLUSIVE! Dentistry's first Wide Prep ring greatly simplifies these more challenging restorations.
	Reel Matrix™—Metal or Blue View	30–31	Retainerless Tofflemire-style matrices, contoured and easy to apply.
	Slick Bands™ Tofflemire-Style Matrices	32–33	Traditional Tofflemire-style with non-stick coating.
Small to medium size Class III 	Fusion™ Anterior Matrix System	7	Bands and wedges with ideal gingival-incisal curvature for many types of anterior lesions.
	VariStrip™ Contoured Anterior Matrices	36	Pre-contoured in three dimensions AND tapered to provide the ideal band height and contour.
Large Class III or Class IV 	Fusion™ Anterior Matrix System	7	Bands and wedges with ideal gingival-incisal curvature for many types of anterior lesions.
	VariStrip™ Contoured Anterior Matrices	36	Pre-contoured in three dimensions AND tapered to provide the ideal band height and contour.
Class V 	Blue View™ Cervical Matrix	37	Contours and directly compresses resin while eliminating air-inhibited layer.
Crown build-ups, post and core 	Reel Matrix™	30–31	Best choice. Margin Elevation band available for very deep buildups. Retainerless convenience.
	Pinch™ Matrices—Metal or Blue View	34	Very fast; may not provide as tight a cervical seal as other matrices.
	Slick Bands™ Tofflemire-Style Non-Stick Matrices	32–33	Margin Elevation band available for very deep buildups if you prefer a traditional matrix retainer.

Customer Service Information

Call **888.437.0032 Toll Free**
 (USA & Canada)

 616.842.2244

Fax 616.842.2430

Email gds@garrisondental.com

Online **garrisondental.com**
 Look for our Learning Center
 with clinical tips, case studies
 and technique guides.

Mail 150 DeWitt Lane
 Spring Lake, MI 49456
 USA

Distribution

Garrison is a global leader for practical and innovative dental products and accessories, with distributors worldwide.

We are pleased to announce that your favorite Garrison products are available through several full-service dealers in Canada.

To find a dealer, contact our headquarters in Spring Lake, Michigan. Phone: 888.437.0032 or Email: gds@garrisondental.com



Order Toll-Free • Order by Fax • Order Online • Order by Mail

Our Guarantee – It's Simple!

Satisfaction = 100%

Everything you order from Garrison® Dental Solutions is backed by our risk-free six-month money-back **Satisfaction Guarantee**. If you are not satisfied with your product, return the unused portion and we will issue a refund.

Quality = 100%

All Garrison products are covered by our **Quality Guarantee**. We will repair or replace any Garrison® product that is shown to be defective in materials or workmanship based on the individual product's anticipated lifetime. Please visit our website for details on our various products, garrisondental.com.

Garrison
Dental Solutions

150 DeWitt Lane,
Spring Lake, MI 49456 USA
toll free 888.437.0032
www.garrisondental.com



Distributed by Curion

EN: 1.800.667.8811
FR: 1.800.211.1200
curion.ca

RLCACAT122