

# LM Dental™



LM

feel the  
difference

PRODUCT CATALOG



LM-DENTAL™

# You can feel the difference

We are LM-Dental™, a dental instrument manufacturer located in Parainen, a town in southwest Finland.

Ever since founded in 1973 - more than 50 years ago - we have focused on developing, manufacturing, and marketing high-tech dental hand instruments. We apply the same high standards also to all other LM™ product groups: dental instrument tracking system, ultrasonic devices, and orthodontic appliances.

Our goal at LM™ is to create genuine value for dental care professionals by making instruments that are safe, efficient, and pleasant to use. We aim to make a difference where it counts: by helping people in all aspects of dentistry.

At LM™ we are truly dedicated to manufacturing excellence, allowing us to serve our customers with products that are precise, durable, and reliable. All our products are manufactured in Finland.

Continuous improvement in services and standards has always been our guiding principle, and by following that we've grown from a small garage workshop in the Finnish archipelago to a distinguished player in the global dental industry. Today we are the market leader in Nordic countries exporting 80% of our products globally.

WITH US YOU CAN FEEL THE DIFFERENCE.

Read more at [www.lm-dental.com/About us/Who we are](http://www.lm-dental.com/About-us/Who-we-are)



**PLANMECA**

LM-Dental™ is part of the Planmeca Group,  
one of the world's leading manufacturers of dental equipment.  
[www.planmeca.com](http://www.planmeca.com)



2

## LM-DENTAL™

Feel the difference | LM™ product key features | Instrument handles and tip coatings

15

## DIAGNOSTICS

Mirror handles | Explorers | Periodontal probes | Furcation probes

22

## PERIODONTICS

Sickle scalars | Dual Gracey instruments | Universal curettes | Gracey curettes | Sharpen-free LM Sharp Diamond™ coated instruments | Diamond files | Hoe scalars | LM-ErgoMix™ implant instruments

41

## RESTORATION

Cavity preparation instruments | Instruments for contouring and sculpting | Non-stick LM Dark Diamond™ coated instruments | LM-Arte™ instruments for esthetic restorations | LM-MultiHolder™ system

54

## ENDODONTICS

Endodontic hand instruments

55

## EXTRACTION

Elevators | Luxating instruments | Root tip instruments

58

## ORTHODONTICS

Orthodontic hand instruments

59

## INSTRUMENT HANDLING & MAINTENANCE

LM Dental Tracking System™ | LM-Servo™ instrument cassettes | LM-ServoMax™ tray system | Coding products | LM-RondoPlus™ sharpening machine

66

## ORTHODONTIC APPLIANCES

LM-Activator™ | LM-Activator™ 2 | LM-OrthoSizer™ | LM-Trainer™



Making dental care safe, efficient and pleasant.



A close-up photograph of several dental instrument handles, likely from the LM-ErgoMax series, showing their ergonomic design and metallic finish. The handles are arranged in a row, with some in sharp focus and others blurred in the background.

PIONEERING SINCE 1973

# Instrument ergonomics

## HOW TO DEFINE AN ERGONOMIC HAND INSTRUMENT?

Firstly a non-slip, natural grip on an instrument are essential. Secondly a lightweight and optimized design prevents effectively occupational diseases. Thirdly a good tactile sensitivity and easy handling of the instrument guarantee the best clinical results. Reliability, wear resistance and comfort are the features that will be evident for both, the dentist and the patient.

- These are the guiding principals how Pekka Kangasniemi, DDS, one of the founders of LM-Dental™, defined instrument ergonomics already in the 1980s.

## PIONEERING INNOVATIONS IN DENTAL INSTRUMENT ERGONOMICS

As ergonomics being one of the first key concepts for LM™ product line, were the oversized handles the first step on that path and introduced already in 1974. In the end of 1980s ergonomics were further enhanced by the first silicone handles and the year 1995 marked the year for our first oversized silicone handle LM-ErgoMax™.

The greatest outcome of intense research and cooperation with dental clinicians was the launch of LM-ErgoSense® instruments in 2015 with even more ergonomic grip and with possibility to integrate a trackable RFID tag into the handle making it the first "smart instrument" on the market.

What LM™ brand is widely known and recognized is the innovation introduced already in 1980: the color-coded handles to ease the identification of the instrument. These radical product theses at the time - a thicker handle, optimized shape, elastic surface, lightness and color-coding - have become industry wide standards in the 21st century. We are the innovation leader that others copy.



50 YEARS OF MAKING  
THE DIFFERENCE

Read more at  
[www.lm-dental.com](http://www.lm-dental.com)







#### Fresh color-coding

- ease the identification during clinical procedures and maintenance

#### Elastic, ergonomic silicone surface and optimal contouring

- comfortable and non-slip grip

#### Optimal rigidity

- excellent sensitivity and efficiency
- outstanding corrosion resistance

#### Special alloyed metal core

- lightweight structure
- metal-to-metal connection for enhanced tactile sensitivity

#### LM-ErgoSense® handle \*)

- oversized large diameter
- available with integrated LM DTS™ RFID tag
- available with sharpen free or non-stick coated tips

#### Precision formed tips and high-quality finishing

- extremely sharp and smooth cutting edge

#### LM-DuraGradeMax™ stainless steel tips

- high wear resistance
- immune to corrosion
- uncoated: can be resharpened

\*) See the other handle options on pages 12-13.





## MAKING DENTAL CARE SAFE, EFFICIENT AND PLEASANT.

We are truly dedicated to manufacturing excellence, allowing us to serve our customers with products that are precise, durable, and reliable. Continuous improvement in services and standards has always been our guiding principle. We apply the same high standards to our all product categories and are number-one-partner with the best-in-class dental products and smart solutions.



## LM-ErgoSense® instrument handle

# ENHANCING COMFORT AND PERFORMANCE

When holding the instruments for approximately 2,000 hours each year, the design, weight and feel of the instrument are crucial for the dental practitioner in terms of his/her performance and productivity. An ergonomic, high quality hand instrument naturally feels good in the hand.

The LM-ErgoSense® instrument handle is outcome of intense research and product development in close cooperation with dental clinical experts. It is truly a unique combination of ergonomic, functional design and high-tech in form of integrated RFID technology.

### OVERSIZED Ø 13.7 MM SILICONE HANDLE

A hand instrument with thick silicone handle has been found to be more usable, cause lower perceived strain and to be more productive than those with thinner handles (1).

### RATED AS BEST HAND INSTRUMENT

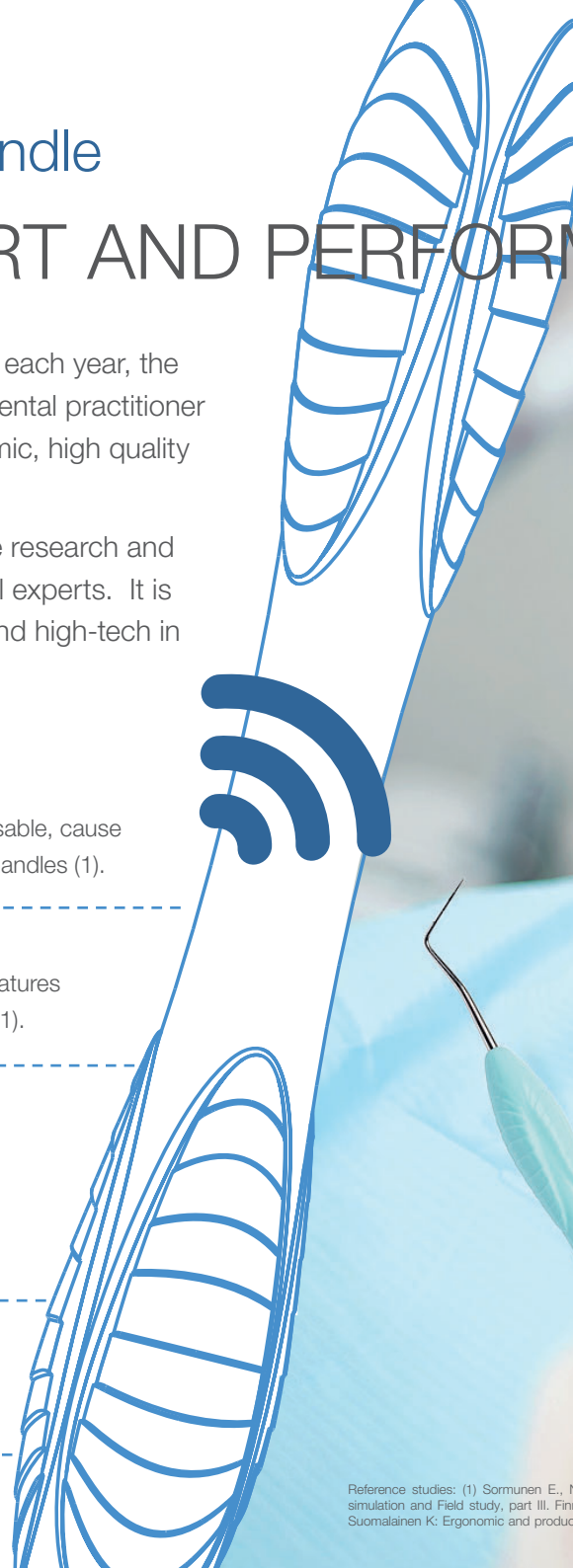
LM-ErgoSense® was rated as the best in 10 out of 14 specified usability features compared with the other tested instruments in a dental scaling simulation (1).

### "FEELS GREAT IN THE HAND"

In study focusing on ergonomics, usability characteristics and work productivity of different hand instruments the thick, silicone coated LM™ instruments were the most preferred choice in regard to all 18 usability criteria used in the test (2).

### UNIQUE INTELLIGENCE INSIDE

Integrated LM DTS™ RFID tag offers unique opportunities to improve material handling and patient safety. Read more on page 60.



LM SHARP DIAMOND™

# Sharpen-free instruments

Sharpen free LM Sharp Diamond™ coated instruments are ideal choice for clinicians who frequently use hand instruments and want to minimize the time spent on instrument maintenance. These instruments present optimal characteristics of superior sharpness, tactile sensitivity and comfort while combined with premium ergonomics of LM-ErgoSense® handle.

LM Sharp Diamond™ instrument tip is made from exceptionally durable special metal alloy, and its wear resistance is enhanced by a protective micro membrane coating providing excellent sharpness and control. LM Sharp Diamond™ instruments are well-suited for all forms of scaling and tips retain their original functionality, size and shape throughout their lifetime. The time saved from sharpening can be used for productive work and patient care.

What do the dental hygiene experts say? Scan the QR for the video.

See the periodontal product range on pages 22-40.



With LM Sharp Diamond™, I'm not just doing my job - I'm perfecting it. I choose to work smart. I choose to work efficiently. I choose LM Sharp Diamond™."

*Dr. Jay Vaid-Holmes*

RHD, BSDH, DHSc, CEO and founder of Dr. Joy

## CHOOSE SHARP.

### SHARPEN FREE MICRO COATING

Savings of time & money



Long-lasting superior sharpness

Highest rated ergonomics with sensational grip \*

Improved productivity & clinical results

### DIAMOND-LIKE FEATURES

Sharpen free .....	◆◆◆◆◆
Superior sharpness .....	◆◆◆◆◆
Highest rated ergonomics.....	◆◆◆◆◆
Minimum maintenance.....	◆◆◆◆◆

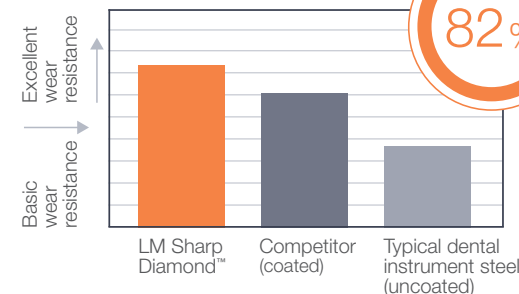
HARDNESS OVER  
**63**  
HRC

### HARDNESS

Hardness contributes to the durability of the instrument. LM Sharp Diamond™ reaches hardness of over 63 on Rockwell scale.

### WEAR RESISTANCE \*\*

82% decrease in wear compared to typical dental hand instrument material.





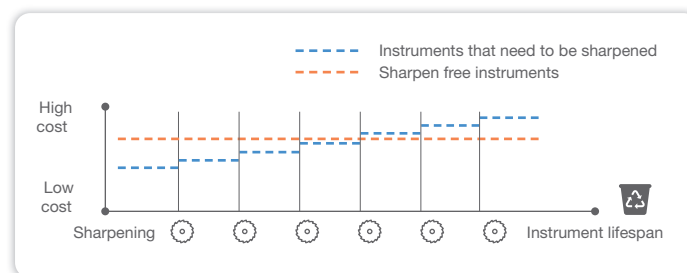
## About SHARPNESS of dental hygiene instruments

The typical lifespan of a dental instrument varies between 6 to 18 months, depending on usage frequency and handling techniques. For optimal performance, most hygienists recommend sharpening instruments at least every two weeks. Prolonged usage without regular sharpening can result in bluntness, reducing the effectiveness of your work and ultimately diminishing patient comfort and satisfaction.

A significant number of instruments are often used beyond the recommended time frame, leading to decreased performance due to dullness. While sharpening is vital for maintaining sharpness, excessive sharpening can alter the original cutting shape and angularity, potentially decreasing instrument durability and increasing the risk of breakage.

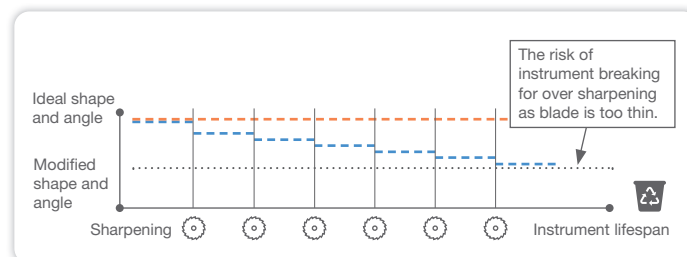
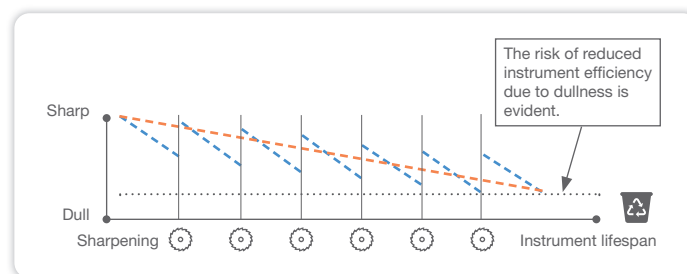
It is of utmost importance for hygienists to utilize sharp instruments. Sharp scalers not only reduce fatigue and ergonomic strain for hygienists but also contribute to enhanced patient comfort.

## COMPARISON of sharpen free instruments and instruments to be sharpened



to easily 5-10 € per sharpening. As a result, the price difference between sharpen free hand instruments and those that require sharpening becomes negligible already after approximately 3-4 sharpening sessions.

By choosing sharpen free hand instruments, the need for sharpening is eliminated. This not only saves valuable time but also reduces expenses, which can then be redirected towards more productive work.



### COST PERSPECTIVE

Switching from conventional to sharpen free instruments a small clinic allows to reduce costs significantly, even 10 000 €, in one year.

The purchase price of sharpen free instruments is ~25% higher compared to instruments that can be reshaped. However, the cost of sharpening services or doing it yourself, counting time, amounts

### SHARPNESS AND EFFECTIVENESS PERSPECTIVE

Sharpen free instruments can retain their sharpness for 82% longer compared to instruments that are reshaped, which tend to lose their sharpness more quickly.

Additionally, reshaping instruments display greater fluctuations in sharpness over time.

### SHAPE AND SAFETY PERSPECTIVE

Sharpen free instruments maintain their original design, shape, and angulation consistently throughout their entire lifespan.

Excessive sharpening of instruments can alter the original cutting shape and angularity, which may lead to reduced instrument durability and increased risk of breakage.



LM DARK DIAMOND™

# Non-stick coated instruments



LM Dark Diamond™ instruments with non-stick coating are designed for easy placing and contouring of composite resins. The diamond-like coating reduces the stickiness and allows pleasant and precise restorative instrumentation.

- Contemporary diamond-like carbon (DLC) coating reduces stickiness for smooth composite placement
- Hard surface protecting the tip from scratches
- Smooth surface for easy cleaning
- Dark coating color for minimal reflections, and maximal contrast against filling
- Ergonomic LM-ErgoSense® handle for excellent precision and feel

## LM-Arte™ Dark Diamond edition

### PLEASANT AND PRECISE SCULPTING OF COMPOSITE

Non-stick coated LM-Arte™ Dark Diamond instruments are the latest outcome of StyleItaliano™ and LM-Dental™ collaboration featuring exclusive coating for smooth and precise non-stick placement and sculpting of composite resins.

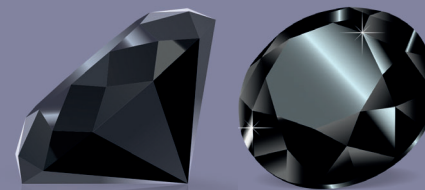
What do the StyleItaliano™ experts say?  
Scan the QR for the video.

See LM-Arte™ product range on pages 45-48.



The sensitivity, flexibility and precision are the same as with conventional LM-Arte™ instruments, but the LM Dark Diamond™ coating eliminates the issue of resin sticking to spatulas, even for the most delicate resins.”

*Dr. Paulo Monteiro* Honorary Member of StyleItaliano™





LM-Dental™ and Styleitaliano™

# LM-Arte™ restorative instruments

## SIMPLIFYING ESTHETIC RESTORATIONS

LM-Arte™ is a range of innovative instruments for esthetic restorations that is designed especially for composite layering. Each instrument is color-coded and named after its main function, enabling you to administer easy, efficient and quick restorative treatments. The lightweight and ergonomic LM™ handle design, together with high-quality tip materials, provides excellent tactile sensitivity and easy handling or the best clinical results.

## CO-OPERATION MAKING THE DIFFERENCE

LM-Arte™ instrument series has been developed in collaboration with Styleitaliano™, a group of skilled dentists who share our passion for improving dentistry.

The Styleitaliano™ movement emerged from a simple idea of two friends - Dr. Walter Devoto and Dr. Angelo Putignano. The renowned experts in conservative and esthetic dentistry had noticed that although materials suitable for creating beautiful direct restorations were available, appropriate instruments for employing these successfully

were lacking. With LM-Dental™'s dedication to manufacturing excellence the unique concept of LM-Arte™ instruments was developed, and it has been a breakthrough in esthetic dentistry.



## BE PART OF THE SUCCESS!

Visit Styleitaliano™ website at [www.styleitaliano.org](http://www.styleitaliano.org) for restorative clinical cases with LM-Arte™ instruments.



Follow and join the social media channels!





# Choosing the handle

Choosing the most ergonomic hand instrument can make a big difference in terms of discomforts and disorders when performing dental work. It is by no means insignificant what is the diameter or material of the grip surface of the hand instrument handle.

LM™ hand instruments are available with a selection of different handles all of them exceptionally ergonomic due to the elastic silicone coating and optimized contouring. The clinician's hand fit and indication both play a role in selecting an ideal handle type. Interchanging different handles, may place the user's hand under even less strain.

# Handle selection



## LM-ErgoSense®

The larger diameter and design provide sensational grip that has been proven to be ergonomic and efficient in scientific clinical testing.

LM-ErgoSense® handle is available with integrated LM DTS™ RFID tag. The compatibility with the LM Dental Tracking System™ offers many opportunities to improve asset management and patient safety.



## LM-ErgoMax™

Classic ergonomic design that others copy. Functions well in all clinical procedures and guarantees excellent tactile sensitivity and relaxed grip.



## COLORS, NAMING AND CODING

To facilitate color coding and brighten up working practices all the LM™ instruments come in refreshing colors. The name and the code number on the handle ease the identification of the instrument during clinical procedures and maintenance.



## Codes, symbols and diameters

**LM-ErgoSense®**

**ES** = LM-ErgoSense® handle  
(Ø 13.7 mm)



**EST** = LM-ErgoSense® handle with  
integrated LM DTS™ RFID tag

**LM-ErgoMax™**

**XSI** = LM-ErgoMax™ handle  
(Ø 11.5 mm)



## Special handles



**LM-ErgoNorm™**

The thinner handle that functions best in light clinical procedures.



**LM-ErgoMix™**

The LM-ErgoMix™ handle for exchangeable tips offers all the economical and ecological benefits of retipping. See page 39.



**LM-ErgoSingle™**

Well balanced mirror handle with better reachability. See page 15.

**LM-ErgoNorm™**

**SI** = LM-ErgoNorm™ handle  
(Ø 8.5 mm)

**LM-ErgoMix™**

**EM** = LM-ErgoMix™ handle  
(Ø 12.5 mm)

**LM-ErgoSingle™**

**ESI** = LM-ErgoSingle™ handle  
(Ø 11.5 mm)

## Choosing instruments with special coated tips

### SHARPEN FREE PROPHY AND PERIO

Sharpen free LM Sharp Diamond™ instrument tips are made from exceptionally durable special metal alloy, and their wear resistance is enhanced by a protective micro membrane coating made using the most advanced PVD (Physical Vapor Deposition) technology. Choose sharp and work efficiently.



**LM-ErgoSense®**

**SDES** = LM-ErgoSense® (ES) handle with sharpen free LM Sharp Diamond™ (SD) coating

### NON-STICK RESTORATIVE INSTRUMENTS

LM Dark Diamond™ instruments with non-stick coating allow easy placing and contouring of composite resins. Dark colored tips provide maximum contrast against the filling and reduce the reflections.



**LM-ErgoSense®**

**DDES** = LM-ErgoSense® (ES) handle with non-stick LM Dark Diamond™ (DD) coating

### PATIENT SAFETY AND TRACEABILITY

Coated instruments, like all LM™ hand instruments with LM-ErgoSense® handle, are available with integrated LM DTS™ RFID tag for the compatibility with unique LM Dental Tracking System™.



**SDEST / DDEST** = LM-ErgoSense® (ES) handle with sharpen free (SD) or non-stick (DD) coating and integrated LM DTS™ RFID tag (T)







Making dental care safe, efficient and pleasant.

## MIRROR HANDLES

### Simple stem

LM 25 mirror handle threads are in accordance with international standard M2.5. The mirror shank must have a diameter of 2.5 mm.

### Cone socket

LM 28 mirror handle threads are in accordance with international standard UNF4-48. The mirror shank must have a diameter of 2.6 mm.



LM-ErgoSingle™ Mirror Handle

- Well balanced, better reachability
- Color options: red, grey and blue

#### LM-ErgoSingle™

- 25ESIRED
- 25ESIGREY
- 25ESIBLUE

#### LM-ErgoSingle™

- 28ESIRED
- 28ESIGREY
- 28ESIBLUE



Mirror Handle 25

- Simple stem design, single-ended
- Color options: red, grey and blue

#### LM-ErgoSense®

- 25ESRED
- 25ESGREY
- 25ESBLUE

#### LM-ErgoSense®

- 25ESREDT
- 25ESGREYT
- 25ESBLUET

#### LM-ErgoMax™

- 25XSIRE
- 25XSIGREY
- 25XSIBLUE

#### LM-ErgoNorm™

- 25SIRE
- 25SIGREY
- 25SIBLUE



### Handle options:



LM-ErgoSense®



LM-ErgoMax™



LM-ErgoNorm™





### Mirror Handle 28

- Cone socket design, UNF4-48 threads, single-ended
- Color options: red, grey and blue

#### LMErgoSense®

- 28ESRED
- 28ESGREY
- 28ESBLUE



- 28ESREDT
- 28ESGREYT
- 28ESBLUET

#### LMErgoMax™

- 28XSIRE
- 28XSIGREY
- 28XSIBLUE



### Mirror Handle, ortho

- Orthodontic mirror handle with Bausch-Verbiest design
- For measuring the sagittal overjet and vertical overbite
- Millimeter scale, total length 25 mm

LMErgoSense® 25-26ES

LMErgoSense® 25-26EST

LMErgoMax™ 25-26XSI

LMErgoSense® 28-26ES

LMErgoSense® 28-26EST

LMErgoMax™ 28-26XSI



### Mirror Handle JM

- For implant installation

LMErgoSense® 25-473ES

LMErgoSense® 25-473EST

LMErgoMax™ 25-473XSI



### Handle options:



LMErgoSense®



LMErgoMax™



LMErgoNorm™

## EXPLORERS

For diagnosing calculus and caries and exploring of pockets, restorations and furcations.



### Explorer 5-8

- Standard explorer for diagnostic and operative procedures

<b>LMErgoSense®</b>	5-8ES
	5-8EST
<b>LMErgoMax™</b>	5-8XSI
<b>LMErgoNorm™</b>	5-8SI

### Explorer 5-9

- Standard explorer for diagnostic and operative procedures

<b>LMErgoSense®</b>	5-9ES
	5-9EST
<b>LMErgoMax™</b>	5-9XSI
<b>LMErgoNorm™</b>	5-9SI

### Explorer, centered 9-17C

- Standard explorer for diagnostic and operative procedures
- Especially for probing distal surfaces of posterior teeth

<b>LMErgoSense®</b>	9-17CES
	9-17CEST
<b>LMErgoMax™</b>	9-17CXSI
<b>LMErgoNorm™</b>	9-17CSI



### Explorer 17-23

- For distal surfaces (17)
- Elongated lower shank and "back-action" blade (17)
- For areas in the vicinity of proximal contact surfaces (17)
- Also for probing occlusal surface grooves (23)
- For detecting subgingival calculus (23)

<b>LMErgoSense®</b>	17-23ES
	17-23EST
<b>LMErgoMax™</b>	17-23XSI
<b>LMErgoNorm™</b>	17-23SI

### Explorer 17C-23

- For distal surfaces, centered tip (17C)
- For areas in the vicinity of proximal contact surfaces (17C)
- Also for probing occlusal surface grooves (23)
- For detecting subgingival calculus (23)

<b>LMErgoSense®</b>	17C-23ES
	17C-23EST
<b>LMErgoMax™</b>	17C-23XSI
<b>LMErgoNorm™</b>	17C-23SI



### Explorer 3-6

- Standard explorer for diagnostic and operative procedures

<b>LMErgoSense®</b>	3-6ES
	3-6EST
<b>LMErgoMax™</b>	3-6XSI
<b>LMErgoNorm™</b>	3-6SI

### Explorer 11-12

- Angles similar to Gracey 11/12 (211-212)
- For probing proximal and cervical caries
- For subgingival root examination

<b>LMErgoSense®</b>	11-12ES
	11-12EST
<b>LMErgoMax™</b>	11-12XSI
<b>LMErgoNorm™</b>	11-12SI







### Handle options:



LM ErgoSense®



LM ErgoMax™



LM ErgoNorm™

### Flexplorer 11F-12F

- Flexible explorer angulated similarly to Gracey 11/12
- Well-suited for periodontal diagnosing of subgingival calculus and probing deep pockets

LM ErgoSense® 11F-12FES

LM ErgoSense® 11F-12FEST

LM ErgoMax™ 11F-12FXSI



How to use

### Explorer 18-19

- For prosthetic crowns, bridges and inlay-/onlay fillings
- Excellent sensitivity at seams

LM ErgoSense® 18-19ES

LM ErgoSense® 18-19EST

LM ErgoMax™ 18-19XSI

LM ErgoNorm™ 18-19SI

### Explorer 29

- Holst design
- Lateral angle on the shank
- Single-ended

LM ErgoSense® 29ES

LM ErgoSense® 29EST

LM ErgoMax™ 29XSI

LM ErgoNorm™ 29SI

### Explorer 9

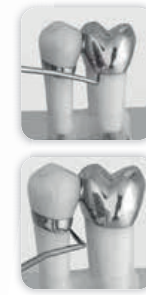
- Single-ended

LM ErgoSense® 9ES

LM ErgoSense® 9EST

LM ErgoMax™ 9XSI

LM ErgoNorm™ 9SI



High sensitivity at seams.



## PERIODONTAL PROBES

Combination instruments for probing caries and parodontium.

- Most periodontal probes are available also in single-ended designs.
- Color-coded scales facilitate measurement of the gingival pocket



How to use  
periodontal  
probes

2 mm scale



Explorer – Periodontal Probe  
23-52B

LMErgoSense® 23-52BES  
 23-52BEST  
 LMErgoMax™ 23-52BXSI  
 LMErgoNorm™ 23-52BSI

2 mm scale  
ball end




Explorer – Periodontal Probe  
8-520B

LMErgoSense® 8-520BES  
 8-520BEST  
 LMErgoMax™ 8-520BXSI  
 LMErgoNorm™ 8-520BSI

2 mm scale  
ball end




Explorer – Periodontal  
Probe 23-520B

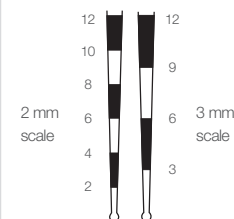
LMErgoSense® 23-520BES  
 23-520BEST  
 LMErgoMax™ 23-520BXSI  
 LMErgoNorm™ 23-520BSI

3 mm scale  
ball end



Explorer – Periodontal  
Probe 23-530B

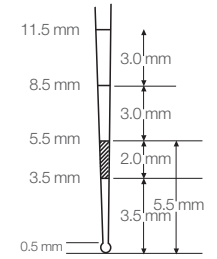
LMErgoSense® 23-530BES  
 23-530BEST  
 LMErgoMax™ 23-530BXSI  
 LMErgoNorm™ 23-530BSI



Ball end  
ø 0,5 mm

- Increases tactile sensitivity
- Does not damage tissue or pierce pocket bottom
- Gives more accurate pocket depth measurement
- Gives information on subgingival calculus and other root surface unevenness





WHO probe was developed for CPITN method.

#### Diagnosis:

- 0 = healthy
- 1 = bleeding during probing
- 2 = supra- and/or subgingival calculus, filling or crown excesses
- 3 = gingival pockets to 5 mm
- 4 = pockets deeper than 6 mm

#### Williams Probe

- Single-ended

<b>LMErgoSense®</b>	51ES
	51EST
<b>LMErgoMax™</b>	51XSI
<b>LMErgoNorm™</b>	51SI

#### Explorer – WHO Probe 8-550B

<b>LMErgoSense®</b>	8-550BES
	8-550BEST
<b>LMErgoMax™</b>	8-550BXS
<b>LMErgoNorm™</b>	8-550BS

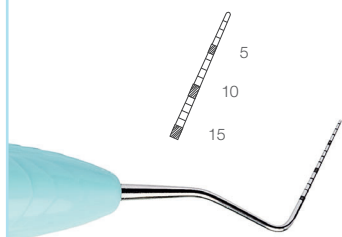
#### Explorer – WHO Probe 23-550B

<b>LMErgoSense®</b>	23-550BES
	23-550BEST
<b>LMErgoMax™</b>	23-550BXS
<b>LMErgoNorm™</b>	23-550BS

#### WHO Probe 550B

- Single-ended

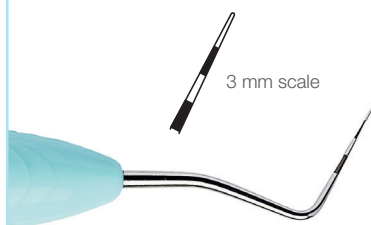
<b>LMErgoSense®</b>	550BES
	550BEST
<b>LMErgoMax™</b>	550BXS
<b>LMErgoNorm™</b>	550BS



### North Carolina Probe 54B

- Single-ended

LMErgoSense®	54BES
☞	54BEST
LMErgoMax™	54BXS



### Marquis 12 Probe 53B

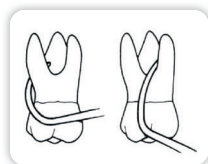
- Single-ended
- Similar to 530B but without ball end

LMErgoSense®	53BES
☞	53BEST
LMErgoMax™	53BXS

## FURCATION PROBES



For probing the extent and depth of furcation lesions.



- For probing furcation lesions from different angles, both in the upper and in the lower jaw region.



### Nabers Probe

LMErgoSense®	20-21ES
☞	20-21EST
LMErgoMax™	20-21XS
LMErgoNorm™	20-21SI

### Furcation Probe

LMErgoSense®	20B-21BES
☞	20B-21BEST
LMErgoMax™	20B-21BXS
LMErgoNorm™	20B-21BSI



### Handle options:





## SICKLE SCALERS

CE MD  
0537

For the removal of supragingival calculus.

### Instrumentation:

For calculus removal place the tip third of the scaler's cutting edge against the tooth. Tilt the instrument toward the tooth to achieve 70° to 80° angle between the tooth and the blade. Apply lateral pressure and activate the scaler by using vertical, diagonal or horizontal pull strokes. To maintain control use short 2–3 mm long strokes.



### Design:

- Triangular cross section
- Face perpendicular to the lower shank
- Two cutting edges (red line), pointed tip



### Handle options:



LM ErgoSense®

LM ErgoSense®



LM ErgoMax™



LM ErgoNorm™



Sharpening of  
sickle scalers  
with steel tips



How to use



### LM-SharpJack™ SD

- Anterior/posterior scaler
- Thin dual-edged blades for easy and efficient interproximal access
- With sharpen free LM Sharp Diamond™ coated tips

LM ErgoSense® 315-316SDES

315-316SDEST

NEW!



### Sickle LM23 Slim SD

- Universal scaler for anterior and posterior areas
- Thin version of popular LM23 scaler (313-314)
- Better access to interproximal areas
- With sharpen free LM Sharp Diamond™ coated tips

LM ErgoSense® 343-344SDES

343-344SDEST



Delicate working end. Especially for tight interdental spaces.

### Micro Sickle

- Anterior/posterior scaler
- Delicate working end, elongated shank
- Ideal for tight interproximal surfaces

LMErgoSense®	301-302ES
◀	301-302EST
LMErgoMax™	301-302XSI
LMErgoNorm™	301-302SI



### Micro Sickle SD

- With sharpen free LM Sharp Diamond™ coated tips

LMErgoSense®	301-302SDES
◀	301-302SDEST



How to use



For all tooth surfaces, especially proximal surfaces.

### Mini Sickle

- Universal scaler
- For all tooth surfaces
- Fine, slightly angled blade

LMErgoSense®	311-312ES
◀	311-312EST
LMErgoMax™	311-312XSI
LMErgoNorm™	311-312SI



### Mini Sickle SD

- With sharpen free LM Sharp Diamond™ coated tips

LMErgoSense®	311-312SDES
◀	311-312SDEST



How to use



### Sickle LM23

- Posterior scaler
- Shorter blade and longer lower shank than in the Mini Sickle (311-312)

LMErgoSense®	313-314ES
◀	313-314EST
LMErgoMax™	313-314XSI
LMErgoNorm™	313-314SI



### Sickle LM23 SD

- With sharpen free LM Sharp Diamond™ coated tips

LMErgoSense®	313-314SDES
◀	313-314SDEST



How to use





Handle options:



LM ErgoSense®



LM ErgoSense®



LM ErgoMax™



LM ErgoNorm™

NEW!



How to use

### Sickle NV1 SD

- Anterior scaler
- Sickle end for removing interproximal calculus and stain
- Disc end for lingual surfaces of incisors
- With sharpen free LM Sharp Diamond™ coated tips

LM ErgoSense® 317-318SDES

LM ErgoSense® 317-318SDEST

NEW!



How to use

### Sickle NV2 SD

- Posterior scaler
- Heavily angled long shank allows for posterior access
- Thin and long blades provide easy access to interproximals
- With sharpen free LM Sharp Diamond™ coated tips

LM ErgoSense® 319-320SDES

LM ErgoSense® 319-320SDEST



### Scaler LM Nebraska 128

- Instrument for the anterior interproximals

LM ErgoSense® 128-128ES

LM ErgoSense® 128-128EST

LM ErgoMax™ 128-128XSI



How to use

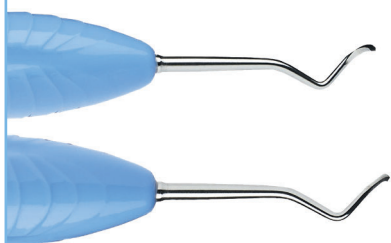


### Scaler LM Nebraska 128 SD

- With sharpen free LM Sharp Diamond™ coated tips

LM ErgoSense® 128-128SDES

LM ErgoSense® 128-128SDEST



### Sickle LM204S

- Sharply angulated shank and very fine working end

LMErgoSense®	303-304ES
⌂	303-304EST
LMErgoMax™	303-304XSI
LMErgoNorm™	303-304SI



### Sickle LM204S SD

- With sharpen free LM Sharp Diamond™ coated tips

LMErgoSense®	303-304SDES
⌂	303-304SDEST



### Scaler H6-H7

- For all tooth surfaces
- Longer shank and smaller lateral bending than in LM-SharpJack™ (315-316)

LMErgoSense®	146-147ES
⌂	146-147EST
LMErgoMax™	146-147XSI
LMErgoNorm™	146-147SI



### Scaler H6-H7 SD

- With sharpen free LM Sharp Diamond™ coated tips

LMErgoSense®	146-147SDES
⌂	146-147SDEST



### Push Scaler H4-H5

- The chisel-like working end used by pushing
- The jacquette working end used by pulling
- 90° working surface

LMErgoSense®	144-145ES
⌂	144-145EST
LMErgoMax™	144-145XSI
LMErgoNorm™	144-145SI



### Laplander

- Similar to H6-H7 (146-147) but with a lateral bending
- Easy access to molar area and proximal surfaces

LMErgoSense®	148-149ES
⌂	148-149EST
LMErgoMax™	148-149XSI



### Crane-Kaplan

- Extremely strong, rigid, sharply angled blade
- For removal of heavy supragingival calculus

LMErgoSense®	322-323ES
⌂	322-323EST
LMErgoMax™	322-323XSI
LMErgoNorm™	322-323SI



### Mini Kaplan

- Same angle but with a more delicate blade than in the Crane-Kaplan (322-323)

LMErgoSense®	333-334ES
⌂	333-334EST
LMErgoMax™	333-334XSI
LMErgoNorm™	333-334SI





## DUAL GRACEYS



LM Dual Gracey™ combines the benefits of a universal curette and a Gracey curette in one. These instruments are designed for the removal of supra and subgingival calculus from all tooth surfaces.

### LM™ INNOVATION

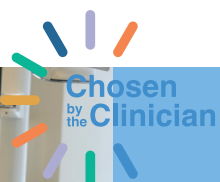
Each LM Dual Gracey™ tip has two elliptical cutting edges – a mesial and a distal edge. This design allows for treatment both mesial and distal tooth surfaces. LM Dual Graceys™ are suitable for vertical, horizontal and oblique scaling techniques.



How to use  
LM Dual Gracey™  
instruments

### Design:

- Two elliptical cutting edges
- Rounded tip



Effective  
instrumentation  
with Dual Gracey

Treatment case by  
RDH Tatiana Brandt



### Syntette™

- A combination of universal curette and Gracey 11/12 and Gracey 13/14 curettes
- For removal of supra and subgingival calculus in premolar and molar areas
- For all tooth surfaces

LMErgoSense®	215-216ES
«	215-216EST
LMErgoMax™	215-216XSI
LMErgoNorm™	215-216SI



- With sharpen free LM Sharp Diamond™ coated tips

LMErgoSense®	215-216SDES
«	215-216SDEST



### Mini Syntette™

- Excellent in tight, deep pockets
- Particularly well adapted for use on premolars' and incisors' palatal and lingual surfaces

LMErgoSense®	215-216MES
«	215-216MEST
LMErgoMax™	215-216MXSI
LMErgoNorm™	215-216MSI



- With sharpen free LM Sharp Diamond™ coated tips

LMErgoSense®	215-216MSDES
«	215-216MSDEST



### Syntette™ Anterior SD

- A combination of universal curette and Gracey 1/2 and Gracey 7/8 curettes
- For removal of supra and subgingival calculus in premolar and anterior areas
- For all tooth surfaces
- With sharpen free LM Sharp Diamond™ coated tips

LMErgoSense®	275-276SDES
«	275-276SDEST



### Mini Syntette™ Anterior SD

- Excellent in narrow, deep pockets
- With sharpen free LM Sharp Diamond™ coated tips

LMErgoSense®	275-276MSDES
«	275-276MSDEST

## UNIVERSAL CURETTES

CE MD  
0537

Designed for the removal of moderate and heavy calculus from all supra- and subgingival tooth surfaces.

### Instrumentation:

For calculus removal place one of the cutting edges of the universal curette against the tooth surface. Tilt the instrument toward the tooth to achieve 70° to 80° angle between the tooth and the blade. Apply lateral pressure and activate the curette by using vertical, diagonal or horizontal pull strokes. Both cutting edges of the same curette can be used by simply tilting the instrument one way or the other.



### Design:

- Working end perpendicular to the lower shank
- Two cutting edges (red line)
- Rounded tip



Sharpening of  
universal scalers  
with steel tips

## McCALL

### McCall 13S-14S

- For incisors and premolars
- Strong blade with rigid shank

LMErgoSense®	222-223ES
◀	222-223EST
LMErgoMax™	222-223XSI
LMErgoNorm™	222-223SI



How to use



### Curette LM 15-16

- Alternative for the McCall 13S-14S (222-223)
- For removal of heavy calculus

LMErgoSense®	225-226ES
◀	225-226EST
LMErgoMax™	225-226XSI
LMErgoNorm™	225-226SI

### Mini McCall 13S-14S

- Sharper, slightly rounded tip (not sickle-shaped)
- For deep, narrow pockets

LMErgoSense®	222-223MES
◀	222-223MEST
LMErgoMax™	222-223MXSI
LMErgoNorm™	222-223MSI

NEW



### Mini McCall 13S-14S SD

- With sharpen free LM Sharp Diamond™ coated tips

LMErgoSense®	222-223MSDES
◀	222-223MSDEST



How to use

### McCall 17-18

- Especially for broad molar surfaces
- Strong, uniform-width working end

LMErgoSense®	277-278ES
◀	277-278EST
LMErgoMax™	277-278XSI
LMErgoNorm™	277-278SI



How to use



### McCall 17S-18S

- Excellent in tight interdental spaces
- More delicate blade, working end narrower than in 17-18

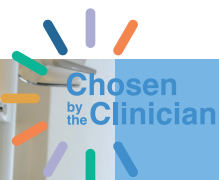
LMErgoSense®	279-280ES
◀	279-280EST
LMErgoMax™	279-280XSI
LMErgoNorm™	279-280SI



# LANGER



Langer curettes combine universal curette's working end with Gracey curette's shank angulation. Angulations ease access to difficult areas and both mesial and distal surfaces can be treated with the same instrument end.



Effective instrumentation with Langer curettes

Treatment case by RDH Tatiana Brandt



## Langer 1/2

- For premolars and molars in the lower jaw

LMErgoSense®	281-282ES
LMErgoSense®	281-282EST
LMErgoMax™	281-282XSI
LMErgoNorm™	281-282SI



How to use



## Langer 5/6

- For incisors in the upper and lower jaw

LMErgoSense®	285-286ES
LMErgoSense®	285-286EST
LMErgoMax™	285-286XSI
LMErgoNorm™	285-286SI



How to use



## Langer 3/4

- For premolars and molars in the upper jaw

LMErgoSense®	283-284ES
LMErgoSense®	283-284EST
LMErgoMax™	283-284XSI
LMErgoNorm™	283-284SI



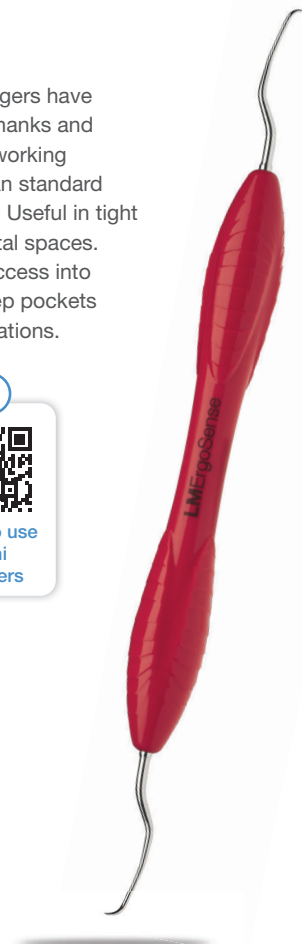
How to use



Mini Langers have longer shanks and shorter working ends than standard Langers. Useful in tight interdental spaces. Better access into tight deep pockets and furcations.



How to use  
Mini  
Langers



## Mini Langer 3/4

- For premolars and molars in the upper jaw

LMErgoSense®	283-284MES
LMErgoSense®	283-284MEST
LMErgoMax™	283-284MXSI
LMErgoNorm™	283-284MSI



## Mini Langer 5/6

- For incisors in the upper and lower jaw

LMErgoSense®	285-286MES
LMErgoSense®	285-286MEST
LMErgoMax™	285-286MXSI
LMErgoNorm™	285-286MSI



## Mini Langer 1/2

- For premolars and molars in the lower jaw

LMErgoSense®	281-282MES
LMErgoSense®	281-282MEST
LMErgoMax™	281-282MXSI
LMErgoNorm™	281-282MSI



# GOLDMAN FOX

CE MD  
0537



## Goldman-Fox 3

- For premolars and molars

LMErgoSense®	233-234ES
«	233-234EST
LMErgoMax™	233-234XSI
LMErgoNorm™	233-234SI

# COLUMBIA

CE MD  
0537



## Columbia 4L-4R

- For incisors, canines and premolars
- For heavier calculus

LMErgoSense®	219-220ES
«	219-220EST
LMErgoMax™	219-220XSI
LMErgoNorm™	219-220SI



- With sharpen free LM Sharp Diamond™ coated tips

LMErgoSense®	219-220SDES
«	219-220SDEST

## Columbia 2L-2R

- For incisors and premolars

LMErgoSense®	217-218ES
«	217-218EST
LMErgoMax™	217-218XSI
LMErgoNorm™	217-218SI



## Columbia 13-14

- For molars

LMErgoSense®	237-238ES
«	237-238EST
LMErgoMax™	237-238XSI
LMErgoNorm™	237-238SI

# BARNHART

CE MD  
0537



## Barnhart 5-6

- For molars
- Shorter lower shank

LMErgoSense®	227-228ES
«	227-228EST
LMErgoMax™	227-228XSI



- With sharpen free LM Sharp Diamond™ coated tips

LMErgoSense®	227-228SDES
«	227-228SDEST

## DIAMOND FILES

CE MD  
0537

Diamond coated files are designed for cleaning deep concave root surfaces in anatomically difficult areas.

Can be used with multidirectional strokes.



## Concavity Diamond File SV 5-6

- Diamond coated round curved toe
- For acute furcation lesions

LMErgoSense®	255-256DES
«	255-256DEST
LMErgoMax™	255-256DXSI
LMErgoNorm™	255-256DSI



## Furcation Diamond File SV 7-8

- Diamond coated egg-shaped toe
- For deep furcation lesions

LMErgoSense®	257-258DES
«	257-258DEST
LMErgoMax™	257-258DXSI
LMErgoNorm™	257-258DSI



Handle options:



LMErgoSense® «



LMErgoMax™



LMErgoNorm™



## Diamond File mes-dist

- Extremely delicate diamond coated instrument for definitive scaling of the root surface
- Easy access with a fine, flexible blade in mesial-distal line angles and developmental grooves

LMErgoSense®	263-264DES
«	263-264DEST
LMErgoMax™	263-264DXSI



## Furcation Diamond File

- Extremely delicate diamond coated instrument for definitive calculus removal in furcations and root depressions
- Easy access with a fine, flexible blade design

LMErgoSense®	261-262DES
«	261-262DEST
LMErgoMax™	261-262DXSI



## FURCATION INSTRUMENT

CE MD  
0537

Well-suited for the cleaning of the furcations of multi rooted teeth.



## Furcator KS

LMErgoSense®	259-260ES
«	259-260EST
LMErgoMax™	259-260XSI

- Delicate, angled excavator
- Suitable also for the cleaning of narrow approximal concavities and grooves in incisors and premolars
- For cleaning of the furcation roof and inner surfaces, particularly concavations and grooves in them





## HOE SCALERS

0537

For the removal of supra- and subgingival calculus.

Suitable for deep, narrow pockets and concave root surfaces. For both vertical and horizontal techniques.



### Design:

- Fine hoe-shaped blade with rounded corners
- Elliptical cutting edge



Sharpening



How to use hoe scalers

### Hoe Scaler, anterior





- For the anterior labial and lingual surfaces
- Works well also with lower incisors that are orally inclined

	112-113ES
	112-113EST
	112-113XSI
	112-113SI



### Hoe Scaler, lateral





- For the buccal and lingual surfaces of all teeth
- Can also be used for furcations

	134-135ES
	134-135EST
	134-135XSI
	134-135SI



### Hoe Scaler, posterior

- For the mesial and distal surfaces of molars
- Can also be used for furcations

	156-157ES
	156-157EST
	156-157XSI
	156-157SI



## SURGICAL HANDLE


### LM-ErgoHold™ 3

- Excellent grip with elastic silicone coating
- Precise blade control
- Controlled rotation
- Blade position responsiveness maintained
- Controlled movement through tissue
- Fits all blades with fitment No. 3 (blades 10, 10A, 11, 11K, 11P, 12, 12D, 15, 15C and 15S)

	9003
	9003T

# I CHOOSE TO WORK SMART.

I love LM Sharp Diamond™ instruments. As a regular user, their superior sharpness, tactile sensitivity, and comfort have truly made a difference in my practice.

With the ergonomic LM-ErgoSense® handle, these instruments feel like natural extensions of my hands, perfectly designed for all forms of scaling. What's truly impressive is their durability. These instruments maintain their original functionality, size, and shape throughout their lifetime, freeing me from frequent maintenance. This saved time is better spent promoting health and crafting beautiful smiles.

The standout feature? Their sharpen free design. Crafted from a durable special metal alloy and enhanced with a protective micro membrane coating, these tools are built to last, enabling me to work efficiently effortlessly. My personal favorite is the LM Dual

Gracey™. It's more than just an instrument; it's my partner in delivering exceptional oral health care.

With LM Sharp Diamond™, I'm not just doing my job - I'm perfecting it. I choose to work smart. I choose to work efficiently. I choose LM Sharp Diamond™.

*Dr. Joy Void-Holmes*

RDH, BSDH, DHSc  
CEO and Founder of Dr. Joy



## GRACEY CURETTES



Area specific curettes for the removal of deep subgingival calculus.  
For the finishing of subgingival root surfaces.



### Design:

- Working surface inclined 20° to the lower shank
- One curved cutting edge (red line)
- Rounded cutting tip

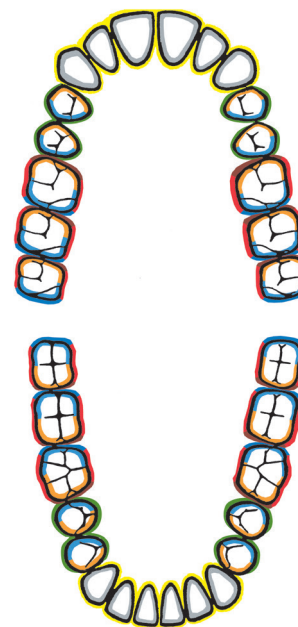


Sharpening of  
Gracey curettes with  
steel tips

### Instrumentation:

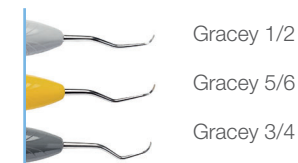
Place the tip third or half of the cutting edge of a Gracey curette against the tooth surface. The larger outer curve is always the cutting edge. Make sure that the lower shank is parallel with the tooth surface. For calculus removal apply moderate and for root planing light lateral pressure and activate the curette by using vertical, diagonal or horizontal pull strokes.

### Area specific indications for Gracey curettes



### Incisors

○ All surfaces



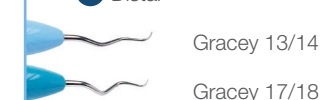
### Premolars and molars

○ Buccal-lingual



○ Mesial

○ Distal





Effective instrumentation with Gracey curettes

- Mini Gracey 1/2
- Mini Gracey 11/12
- Macro Gracey 13/14
- Mini Sickle

Treatment case by RDH Tatiana Brandt



Handle options:



LM ErgoSense®



LM ErgoSense®



LM ErgoMax™



LM ErgoNorm™

## STANDARD AND MINI GRACEY



Mini Gracey has longer lower shank and smaller working end than in the standard model. Functions well in deep narrow pockets.



### Gracey 1/2

- For incisors and premolars

LM ErgoSense®	201-202ES
«	201-202EST
LM ErgoMax™	201-202XSI
LM ErgoNorm™	201-202SI



How to use



- With sharpen free LM Sharp Diamond™ coated tips

LM ErgoSense®	201-202SDES
«	201-202SDEST

### Mini Gracey 1/2

- For incisors and premolars

LM ErgoSense®	201-202MES
«	201-202MEST
LM ErgoMax™	201-202MXSI
LM ErgoNorm™	201-202MSI



- With sharpen free LM Sharp Diamond™ coated tips

LM ErgoSense®	201-202MSDES
«	201-202MSDEST



How to use



### Gracey 3/4

- For incisors and premolars

LM ErgoSense®	203-204ES
«	203-204EST
LM ErgoMax™	203-204XSI
LM ErgoNorm™	203-204SI



### Gracey P3-P4

- Short shank makes the instrument more rigid

LM ErgoSense®	266-267ES
«	266-267EST
LM ErgoMax™	266-267XSI
LM ErgoNorm™	266-267SI



## Gracey 5/6

- For incisors and premolars
- Especially useful in proximal surfaces

<b>LMErgoSense®</b>	205-206ES
<b>LMErgoSense®</b>	205-206EST
<b>LMErgoMax™</b>	205-206XSI
<b>LMErgoNorm™</b>	205-206SI



## Gracey 7/8 SD

- With sharpen free LM Sharp Diamond™ coated tips

<b>LMErgoSense®</b>	207-208SDES
<b>LMErgoSense®</b>	207-208SDEST



## Gracey 7/8

- For premolars and molars
- For buccal, mesial and lingual surfaces

<b>LMErgoSense®</b>	207-208ES
<b>LMErgoSense®</b>	207-208EST
<b>LMErgoMax™</b>	207-208XSI
<b>LMErgoNorm™</b>	207-208SI



How to use

## Mini Gracey 7/8 SD

- With sharpen free LM Sharp Diamond™ coated tips

<b>LMErgoSense®</b>	207-208MSDES
<b>LMErgoSense®</b>	207-208MSDEST



## Mini Gracey 7/8

- For premolars and molars
- For buccal, mesial and lingual surfaces

<b>LMErgoSense®</b>	207-208MES
<b>LMErgoSense®</b>	207-208MEST
<b>LMErgoMax™</b>	207-208MXSI
<b>LMErgoNorm™</b>	207-208MSI



## Gracey 9/10 SD

- With sharpen free LM Sharp Diamond™ coated tips

<b>LMErgoSense®</b>	209-210SDES
<b>LMErgoSense®</b>	209-210SDEST



## Gracey 9/10

- For molars' buccal and lingual surfaces using horizontal technique

<b>LMErgoSense®</b>	209-210ES
<b>LMErgoSense®</b>	209-210EST
<b>LMErgoMax™</b>	209-210XSI
<b>LMErgoNorm™</b>	209-210SI



How to use





### Gracey 11/12

- For premolars' and molars' mesial surfaces

LMErgoSense®	211-212ES
⌂	211-212EST
LMErgoMax™	211-212XSI
LMErgoNorm™	211-212SI



### Gracey 11/12 SD

- With sharpen free LM Sharp Diamond™ coated tips

LMErgoSense®	211-212SDES
⌂	211-212SDEST



### Mini Gracey 11/12

- For premolars' and molars' mesial surfaces

LMErgoSense®	211-212MES
⌂	211-212MEST
LMErgoMax™	211-212MXSI
LMErgoNorm™	211-212MSI



### Mini Gracey 11/12 SD

- With sharpen free LM Sharp Diamond™ coated tips

LMErgoSense®	211-212MSDES
⌂	211-212MSDEST



### Gracey 13/14

- For premolars' and molars' distal surfaces

LMErgoSense®	213-214ES
⌂	213-214EST
LMErgoMax™	213-214XSI
LMErgoNorm™	213-214SI



### Gracey 13/14 SD

- With sharpen free LM Sharp Diamond™ coated tips

LMErgoSense®	213-214SDES
⌂	213-214SDEST



### Mini Gracey 13/14

- For premolars' and molars' distal surfaces

LMErgoSense®	213-214MES
⌂	213-214MEST
LMErgoMax™	213-214MXSI
LMErgoNorm™	213-214MSI



### Mini Gracey 13/14 SD

- With sharpen free LM Sharp Diamond™ coated tips

LMErgoSense®	213-214MSDES
⌂	213-214MSDEST



### Gracey 15/16

- For molars' mesial surfaces
- Blade shank more sharply angulated than in Gracey 11/12 for better access

<b>LMErgoSense®</b>	245-246ES
	245-246EST
<b>LMErgoMax™</b>	245-246XSI
<b>LMErgoNorm™</b>	245-246SI



How to use



### Gracey 15/16 SD

- With sharpen free LM Sharp Diamond™ coated tips

<b>LMErgoSense®</b>	245-246SDES
	245-246SDEST



### Mini Gracey 15/16

- Blade shank more sharply angulated than in Mini Gracey 11/12 for better access

<b>LMErgoSense®</b>	245-246MES
	245-246MEST
<b>LMErgoMax™</b>	245-246MXSI
<b>LMErgoNorm™</b>	245-246MSI



How to use



### Mini Gracey 15/16 SD

- With sharpen free LMSharp Diamond™ coated tips

<b>LMErgoSense®</b>	245-246MSDES
	245-246MSDEST



### Gracey 17/18

- For molars' distal surfaces
- Blade shank more sharply angulated than in Gracey 13/14 for better access

<b>LMErgoSense®</b>	247-248ES
	247-248EST
<b>LMErgoMax™</b>	247-248XSI
<b>LMErgoNorm™</b>	247-248SI



How to use



### Gracey 17/18 SD

- With sharpen free LM Sharp Diamond™ coated tips

<b>LMErgoSense®</b>	247-248SDES
	247-248SDEST



### Mini Gracey 17/18

- Blade shank more sharply angulated than in Mini Gracey 13/14 for better access

<b>LMErgoSense®</b>	247-248MES
	247-248MEST
<b>LMErgoMax™</b>	247-248MXSI
<b>LMErgoNorm™</b>	247-248MSI



How to use



### Mini Gracey 17/18 SD

- With sharpen free LM Sharp Diamond™ coated tips

<b>LMErgoSense®</b>	247-248MSDES
	247-248MSDEST



**MACRO GRACEY**

Standard model's long working end combined with mini model's longer lower shank. Excellent reach interdentally in deep pockets.

**Macro Gracey 5/6**

- For incisors and premolars
- Especially useful in proximal surfaces

<b>LMErgoSense®</b>	205-206AFES
	205-206AFEST
<b>LMErgoMax™</b>	205-206AFXSI
<b>LMErgoNorm™</b>	205-206AFSI

**Macro Gracey 7/8**

- For premolars and molars
- For buccal, mesial and lingual surfaces

<b>LMErgoSense®</b>	207-208AFES
	207-208AFEST
<b>LMErgoMax™</b>	207-208AFXSI
<b>LMErgoNorm™</b>	207-208AFSI

**Macro Gracey 11/12**

- For premolars' and molars' mesial surfaces

<b>LMErgoSense®</b>	211-212AFES
	211-212AFEST
<b>LMErgoMax™</b>	211-212AFXSI
<b>LMErgoNorm™</b>	211-212AFSI

**Macro Gracey 13/14**

- For premolars' and molars' distal surfaces

<b>LMErgoSense®</b>	213-214AFES
	213-214AFEST
<b>LMErgoMax™</b>	213-214AFXSI
<b>LMErgoNorm™</b>	213-214AFSI

**RIGID GRACEY**

Blade shank thicker and more rigid, and working end slightly wider than in the standard model. Permits the use of greater pressure.

**Rigid Gracey 1/2**

- For incisors and premolars

<b>LMErgoSense®</b>	201-202RES
	201-202REST
<b>LMErgoMax™</b>	201-202RXSI
<b>LMErgoNorm™</b>	201-202RSI

**Rigid Gracey 7/8**

- For premolars and molars
- For buccal, mesial and lingual surfaces

<b>LMErgoSense®</b>	207-208RES
	207-208REST
<b>LMErgoMax™</b>	207-208RXSI
<b>LMErgoNorm™</b>	207-208RSI

**Rigid Gracey 11/12**

- For premolars' and molars' mesial surfaces

<b>LMErgoSense®</b>	211-212RES
	211-212REST
<b>LMErgoMax™</b>	211-212RXSI
<b>LMErgoNorm™</b>	211-212RSI

**Rigid Gracey 13/14**

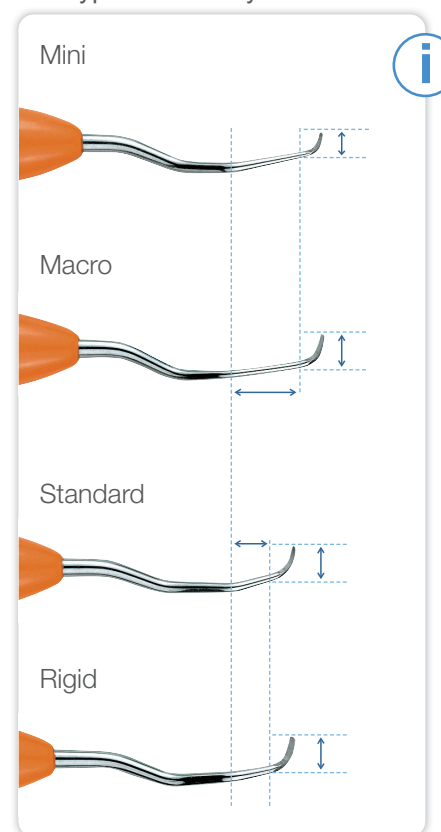
- For premolars' and molars' distal surfaces

<b>LMErgoSense®</b>	213-214RES
	213-214REST
<b>LMErgoMax™</b>	213-214RXSI
<b>LMErgoNorm™</b>	213-214RSI

**Rigid Gracey 15/16**

- For molars' mesial surfaces
- Blade shank more sharply angulated than in Gracey 11/12 for better access

<b>LMErgoSense®</b>	245-246RES
	245-246REST
<b>LMErgoMax™</b>	245-246RXSI
<b>LMErgoNorm™</b>	245-246RSI

**The types of Gracey curettes:**

## MESIAL-DISTAL GRACEY



Combining a mesial and a distal working end in one instrument. Useful when treating one quadrant at a time.

All mesial-distal Graceys have code rings that make it easy to identify which working end is mesial and which distal.

Distal .....

Mesial .....



## Gracey 11/14

<b>LMErgoSense®</b>	211-214ES
	211-214EST
<b>LMErgoMax™</b>	211-214XSI
<b>LMErgoNorm™</b>	211-214SI

## Gracey 12/13

<b>LMErgoSense®</b>	212-213ES
	212-213EST
<b>LMErgoMax™</b>	212-213XSI
<b>LMErgoNorm™</b>	212-213SI

## Gracey 15/18

<b>LMErgoSense®</b>	245-248ES
	245-248EST
<b>LMErgoMax™</b>	245-248XSI
<b>LMErgoNorm™</b>	245-248SI

## Gracey 16/17

<b>LMErgoSense®</b>	246-247ES
	246-247EST
<b>LMErgoMax™</b>	246-247XSI
<b>LMErgoNorm™</b>	246-247SI

## MINI MESIAL-DISTAL GRACEY

Mini models have longer lower shank and smaller working end than the standard model. Functions well in deep narrow pockets.

## Mini Gracey 11/14

<b>LMErgoSense®</b>	211-214MES
	211-214MEST
<b>LMErgoMax™</b>	211-214MXSI
<b>LMErgoNorm™</b>	211-214MSI

## Mini Gracey 12/13

<b>LMErgoSense®</b>	212-213MES
	212-213MEST
<b>LMErgoMax™</b>	212-213MXSI
<b>LMErgoNorm™</b>	212-213MSI

## Mini Gracey 15/18

<b>LMErgoSense®</b>	245-248MES
	245-248MEST
<b>LMErgoMax™</b>	245-248MXSI
<b>LMErgoNorm™</b>	245-248MSI

## Mini Gracey 16/17

<b>LMErgoSense®</b>	246-247MES
	246-247MEST
<b>LMErgoMax™</b>	246-247MXSI
<b>LMErgoNorm™</b>	246-247MSI

## MACRO MESIAL-DISTAL GRACEY

Macro models have standard model's long working end combined with mini model's longer lower shank. Excellent reach interdentally in deep pockets.

## Macro Gracey 11/14

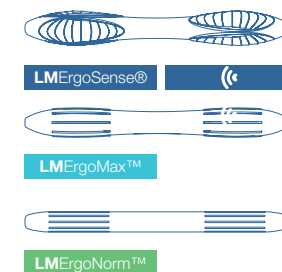
<b>LMErgoSense®</b>	211-214AFES
	211-214AFEST
<b>LMErgoMax™</b>	211-214AFXSI
<b>LMErgoNorm™</b>	211-214AFSI

## Macro Gracey 12/13

<b>LMErgoSense®</b>	212-213AFES
	212-213AFEST
<b>LMErgoMax™</b>	212-213AFXSI
<b>LMErgoNorm™</b>	212-213AFSI



Handle options:



## EXCHANGEABLE TITANIUM TIPS FOR IMPLANTS

CE MD  
0537

LMErgoMix™

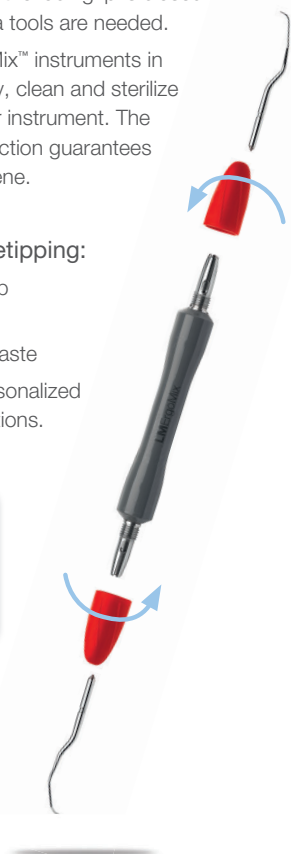
A great instrument series for implant maintenance. The LMErgoMix™ structure ensures excellent tactile sensitivity and optimal rigidity.

LM-ErgoMix™ hand instrument series offers the dental team a specially economical, ecological and ergonomic alternative. Whenever there is a need for a tip replacement the lock grip is opened, a new tip is inserted and the lock grip is closed again. No extra tools are needed.

Use LM-ErgoMix™ instruments in the normal way, clean and sterilize it like any other instrument. The sealed construction guarantees high level hygiene.

### Benefits of retipping:

- Always sharp instruments
- Minimizes waste
- Enables personalized tip combinations.



Titanium tips for sensitive but still effective implant maintenance.



### Implant Mini Universal curette

- Delicate working end
- Especially for tight interdental spaces

LMErgoMix™ 283-284MTIEM



### Implant Mini Gracey 1/2

- For incisors and premolars

LMErgoMix™ 201-202MTIEM



### Implant Mini Gracey 11/12

- For premolars' and molars' mesial surfaces

LMErgoMix™ 211-212MTIEM



### Implant Mini Gracey 13/14

- For premolars' and molars' distal surfaces

LMErgoMix™ 213-214MTIEM

## LM-ErgoMix™ spare parts

### Spare handle

LM-ErgoMix™ handle dark grey	9011EM
------------------------------	--------

### Spare lock grips

Orange	9020EM
Light blue	9021EM
Grey	9022EM
Yellow	9023EM
Dark grey	9024EM
Red	9025EM

### Spare titanium tips

Implant Mini Universal Curette L	283MTIEM
Implant Mini Universal Curette R	284MTIEM
Implant Mini Gracey 1	201MTIEM
Implant Mini Gracey 2	202MTIEM
Implant Mini Gracey 11	211MTIEM
Implant Mini Gracey 12	212MTIEM
Implant Mini Gracey 13	213MTIEM
Implant Mini Gracey 14	214MTIEM



## PERIODONTAL INSTRUMENT SETS

CE MD  
0537



LM-PerioSet 1

**LMErgoSense®** 6652ES  
**LMErgoMax™** 6652XSI

**Includes:**

- Mini Sickle
- Curette McCall 17-18
- Gracey 1/2
- Gracey 11/12
- Gracey 13/14
- LM-Servo™ 5 cassette



LM-PerioSet 2

**LMErgoSense®** 6682ES  
**LMErgoMax™** 6682XSI

**Includes:**

- Mini Sickle
- Curette McCall 17-18
- Gracey 1/2
- Gracey 9/10
- Gracey 11/12
- Gracey 13/14
- Mini Gracey 15/16
- Mini Gracey 17/18
- LM-Servo™ 8 cassette



LM-PerioKit

**LMErgoSense®** 6842ES

**Includes:**

- Implant Mini Universal curette
- Concavity File SV 5-6
- Mini Gracey 13-14
- Mini Gracey 11-12
- Mini Gracey 7-8
- McCall 17S-18S
- North Carolina Probe
- Furcation Probe
- LM-Servo™ 8 cassette

”

The LM-PerioKit by Style Italiano™ contains the essentials for the best possible therapy.

Instruments have been selected in the spirit of Style Italiano™ whose philosophy is to make treatment feasible, teachable, repeatable. Periodontal therapy too can follow this approach. It's my feeling that, in the best interest of his patients, every practitioner should be able to properly execute non surgical therapy, crown lengthening procedures, free gingival grafts, simpler surgical root coverages.”

*Dr. Giano Ricci*

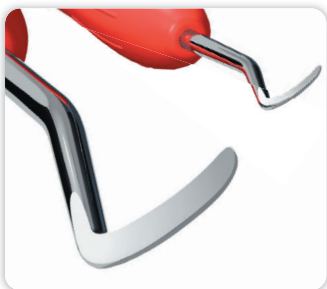
MD, DDS, MScD



## SPOON EXCAVATORS



For the removal of softened carious dentin and temporary fillings.



## Design:

- Spoon-shaped working end
- Rounded tip
- Long cutting edge, which can easily treat broader areas



## Handle options:



Spoon Excavator, 1.0 mm

LMergoSense®	522-523ES
◀	522-523EST
LMergoMax™	522-523XSI
LMergoNorm™	522-523SI



Spoon Excavator, 1.5 mm

LMergoSense®	533-534ES
◀	533-534EST
LMergoMax™	533-534XSI
LMergoNorm™	533-534SI

## ROUND EXCAVATORS



## Cariology:

- For the removal of softened, carious dentin
- For the removal of temporary fillings

## Surgery:

- To sever the periodontal ligament prior to extraction
- For the removal of granulation tissue after extraction



## Design:

- Round working end
- Curved cutting edge



Round Excavator, 1.5 mm

LMergoSense®	63-64ES
◀	63-64EST
LMergoMax™	63-64XSI
LMergoNorm™	63-64SI



Round Excavator, 2.0 mm

Round Excavator, 1.0 mm

LMergoSense®	61-62ES
◀	61-62EST
LMergoMax™	61-62XSI
LMergoNorm™	61-62SI

LMergoSense®	65-66ES
◀	65-66EST
LMergoMax™	65-66XSI
LMergoNorm™	65-66SI

## TRIPLE-ANGLED BACK ACTION EXCAVATORS



### Cariology:

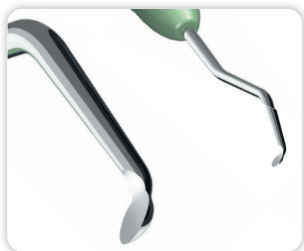
- For removing carious dentin
- For undermining enamel during tissue-saving preparations
- For the horizontal finishing of outer cavity margins

### Periodontics:

- For the removal of calculus from hard to reach areas such as the lower anterior lingual surfaces
- For the depuration of concave root grooves and furcations

### Surgery:

- For the removal of granulation tissue in connection with apical resections, flap operations, or extractions



### Design:

- Round working end and curved cutting edge
- Shank angulations ease treatments on hard to reach buccal, distal, and lingual surfaces



The blade shank is triple-angled, allowing for "back action" functions



Triple-angled Back Action Excavator, 1.0 mm

LM ErgoSense®	611-621ES
«	611-621EST
LM ErgoMax™	611-621XSI
LM ErgoNorm™	611-621SI



Triple-angled Back Action Excavator, 1.5 mm

LM ErgoSense®	631-641ES
«	631-641EST
LM ErgoMax™	631-641XSI
LM ErgoNorm™	631-641SI



Triple-angled Back Action Excavator, 2.0 mm

LM ErgoSense®	651-661ES
«	651-661EST
LM ErgoMax™	651-661XSI
LM ErgoNorm™	651-661SI



Triple-angled Back Action Excavator, 3.5 mm

- For the horizontal finishing of outer cavity margins

LM ErgoSense®	671-681ES
«	671-681EST
LM ErgoMax™	671-681XSI
LM ErgoNorm™	671-681SI

## GINGIVAL MARGIN TRIMMERS



For finishing enamel margins in the proximal area as well as for making plastic, amalgam and ceramic fillings.



Gingival Margin Trimmer, 1.2 mm, distal

LM ErgoSense®	121-122ES
«	121-122EST
LM ErgoMax™	121-122XSI
LM ErgoNorm™	121-122SI



Gingival Margin Trimmer, 1.2 mm, mesial

LM ErgoSense®	125-126ES
«	125-126EST
LM ErgoMax™	125-126XSI
LM ErgoNorm™	125-126SI



## SPATULA



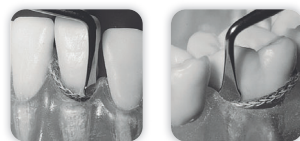
Spatula

<b>LMErgoSense®</b>	450-460ES
	450-460EST
<b>LMErgoMax™</b>	450-460XSI
<b>LMErgoNorm™</b>	450-460SI

## CORD PACKERS



For packing retraction cord into the gingival pocket.



The bent blade enables getting around the tooth as well as the packing of the cord using vertical motions.



Cord Packer, 2.0 mm

<b>LMErgoSense®</b>	490-491ES
	490-491EST
<b>LMErgoMax™</b>	490-491XSI
<b>LMErgoNorm™</b>	490-491SI



Cord Packer, 2.6 mm

<b>LMErgoSense®</b>	492-493ES
	492-493EST
<b>LMErgoMax™</b>	492-493XSI
<b>LMErgoNorm™</b>	492-493SI

## BASE CARRIERS



For carrying base or thin liner to dentin surfaces.



Base Carrier, rigid

<b>LMErgoSense®</b>	29H-30HES
	29H-30HEST
<b>LMErgoMax™</b>	29H-30HXS
<b>LMErgoNorm™</b>	29H-30HS



Base Carrier – Condenser, malleable tip

- Tip (30) can be bent into the desired form, allowing for easier access to hard to reach areas

<b>LMErgoSense®</b>	30-34ES
	30-34EST
<b>LMErgoMax™</b>	30-34XSI
<b>LMErgoNorm™</b>	30-34SI



Base Carrier - Condenser, rigid

<b>LMErgoSense®</b>	30H-34ES
	30H-34EST
<b>LMErgoMax™</b>	30H-34XSI
<b>LMErgoNorm™</b>	30H-34SI

## PLUGGERS

For packing all types of filling materials.



Plugger, cylindrical,  
1.0-1.5 mm

LMErgoSense®	340-360ES
☞	340-360EST
LMErgoMax™	340-360XSI
LMErgoNorm™	340-360SI



Plugger, cylindrical,  
1.2-2.0 mm

LMErgoSense®	350-380ES
☞	350-380EST
LMErgoMax™	350-380XSI
LMErgoNorm™	350-380SI



Plugger, cylindrical,  
1.8-2.5 mm

LMErgoSense®	370-390ES
☞	370-390EST
LMErgoMax™	370-390XSI
LMErgoNorm™	370-390SI

## BURNISHERS

For burnishing, modelling and finishing of fillings.



Burnisher

- For burnishing fillings at cavity margins
- For packing and shaping of composite fillings
- For packing of inlay-/onlay fillings

LMErgoSense®	31-32ES
☞	31-32EST
LMErgoMax™	31-32XSI
LMErgoNorm™	31-32SI



Burnisher DD

- With LM Dark Diamond™ non-stick coated tips

LMErgoSense®	31-32DDES
☞	31-32DDEST



Burnisher – Plugger,  
ball-ended, 1.5-2.5 mm

- For plugging filling into cavity
- For polishing
- For plugging and shaping of composite fillings

LMErgoSense®	471-473ES
☞	471-473EST
LMErgoMax™	471-473XSI
LMErgoNorm™	471-473SI



Burnisher – Plugger DD,  
ball-ended, 1.5-2.5 mm

- With LM Dark Diamond™ non-stick coated tips

LMErgoSense®	471-473DDES
☞	471-473DDEST



Burnisher 27-29

- For shaping of occlusal surfaces
- For burnishing of fillings at cavity margins

LMErgoSense®	476-477ES
☞	476-477EST
LMErgoMax™	476-477XSI
LMErgoNorm™	476-477SI



Burnisher 21

- For shaping and packing of composite fillings
- For shaping occlusal surfaces before hardening
- Pits, grooves, lateral ridges

LMErgoSense®	476-477ES
☞	476-477EST
LMErgoMax™	476-477XSI
LMErgoNorm™	476-477SI

## LM-ARTE™ FOR ESTHETIC RESTORATIONS



LM-Arte™ is a set of innovative instruments for esthetic restorations and it is designed especially for composite layering.



## CO-OPERATION WITH STYLEITALIANO™

LM-Arte™ instruments have been developed in collaboration with Styleitaliano™, a group of passionate clinicians and researchers specialized in esthetic restorative dentistry. The unique concept of LM-Arte™ instruments has been a breakthrough in esthetic dentistry.

Read more on pages 10-11.



## REPLICATE EASILY

I can make modeling within seconds with simple steps by using LM-Arte™ Replica Posterior instrument and technique.

*Dr. Osama Shaalan*  
Gold Member of Styleitaliano™

NEW!



## LM-Arte™ Replica Posterior

- For easy occlusal modeling of posterior teeth in direct composite restorations
- Occlusal anatomy of single tooth is guided by buccal cusps using replica technique: adapt, shape, replicate
- Concave and convex tip profiles

LMErgoSense®	448-449ES
LMErgoMax™	448-449XSI

LM-Arte™ Solo instruments are ideal for simplifying your daily cases: with just two instruments, you can perform most of your high-end anterior and posterior restorations.



## LM-Arte™ Solo Anterior

- For high-end esthetic anterior restorations
- Rounded and straight spatulas are designed for modeling anterior teeth, especially labial surfaces

LMErgoSense®	431-433ES
LMErgoSense®	431-433EST
LMErgoMax™	431-433XSI

## LM-Arte™ Solo Posterior

- For high-end posterior composite restorations
- The plugger end is designed for bulk filling and composite material modeling
- The sharp end enables contouring of the occlusal surface anatomy

LMErgoSense®	434-438ES
LMErgoSense®	434-438EST
LMErgoMax™	434-438XSI



### LM-Arte™ Applica

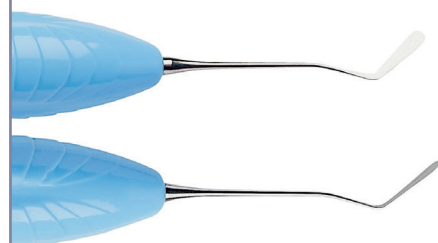
- A very thin and flexible spatula for transporting and modeling of the composite



<b>LMErgoSense®</b>	46-49ES
	46-49EST
<b>LMErgoMax™</b>	46-49XSI

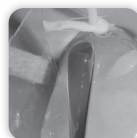


How to use



### LM-Arte™ Modella

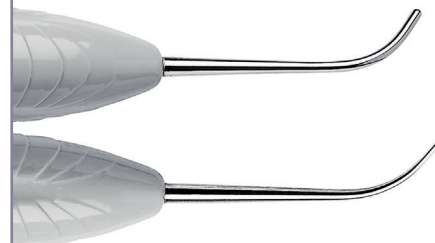
- A very thin and flexible spatula for transporting and modeling of the composite



<b>LMErgoSense®</b>	442-443ES
	442-443EST
<b>LMErgoMax™</b>	442-443XSI



How to use



### LM-Arte™ Condensa

- A long and round plugger especially for modeling composite



<b>LMErgoSense®</b>	488-489ES
	488-489EST
<b>LMErgoMax™</b>	488-489XSI

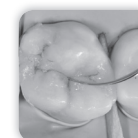


How to use



### LM-Arte™ Fissura

- Sharp pointed tips for modeling of occlusal surface structures

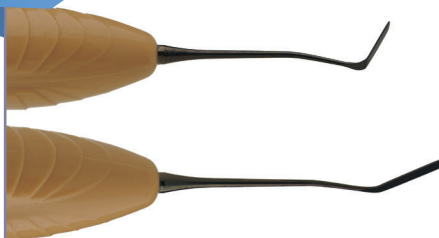


<b>LMErgoSense®</b>	481-487ES
	481-487EST
<b>LMErgoMax™</b>	481-487XSI



How to use

NEW!

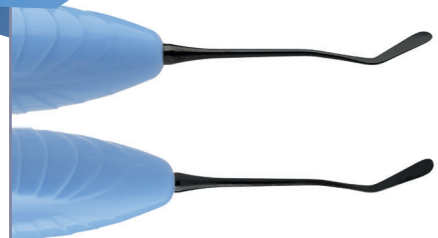


### LM-Arte™ Applica DD

- With LM Dark Diamond™ non-stick coated tips

<b>LMErgoSense®</b>	46-49DDES
	46-49DDEST

NEW!



### LM-Arte™ Modella DD

- With LM Dark Diamond™ non-stick coated tips

<b>LMErgoSense®</b>	442-443DDES
	442-443DDEST

NEW!



### LM-Arte™ Condensa DD

- With LM Dark Diamond™ non-stick coated tips

<b>LMErgoSense®</b>	488-489DDES
	488-489DDEST

NEW!

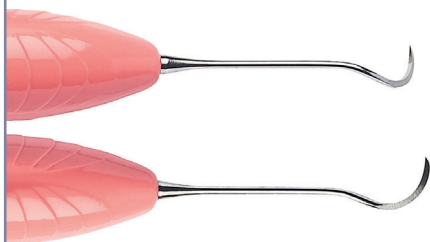


### LM-Arte™ Fissura DD

- With LM Dark Diamond™ non-stick coated tips

<b>LMErgoSense®</b>	481-487DDES
	481-487DDEST





### LM-Arte™ Eccesso

- For the removal of composite and bonding residue

LMErgoSense®	307-308ES
«	307-308EST
LMErgoMax™	307-308XSI



How to use

NEW!



### LM-Arte™ Eccesso DD

- With LM Dark Diamond™ non-stick coated tips

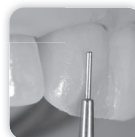
LMErgoSense®	307-308DDES
«	307-308DDEST



### LM-Arte™ Misura

- For horizontal and vertical measuring of thickness of composite layers on the restorations

LMErgoSense®	496-497ES
«	496-497EST
LMErgoMax™	496-497XSI



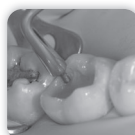
How to use



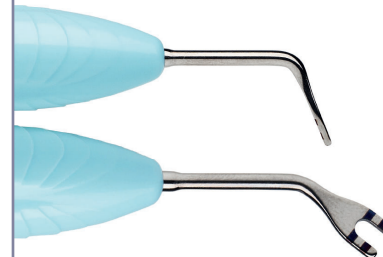
### LM-Arte™ Posterior Misura

- For horizontal and vertical measuring of thickness of composite layers on the posterior restorations
- The fork shaped tip allows measuring and modeling of the composite wall with the presence of a matrix

LMErgoSense®	498-499ES
«	498-499EST
LMErgoMax™	498-499XSI



How to use



### LM-Arte™ Cusp Misura

- Unique instrument for estimating cusp thickness and height for evaluating the need for cusp preparation when performing adhesive restorations.

LMErgoSense®	468-469ES
«	468-469EST
LMErgoMax™	468-469XSI



How to use



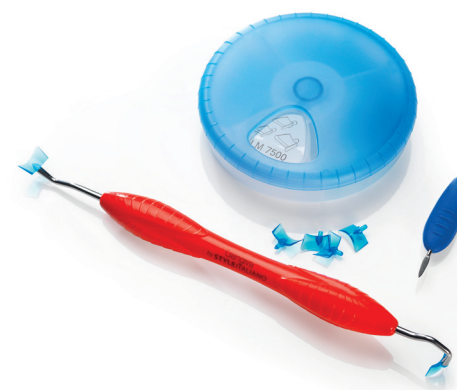
### LM-Arte™ Applica Twist

- Thin and narrow spatula with bended angles for modeling difficult to reach areas such as approximal walls or the marginal ridge in matrix

LMErgoSense®	464-494ES
«	464-494EST
LMErgoMax™	464-494XSI



How to use



### LM-Gengiva™ gingival retracting kit

#### Includes:

- LM-Gengiva™ / LM-MultiHolder™ PK III hand instrument (see also page 53)
- LM-Gingival Retractors (blue) for establishing optimum working conditions for procedures at the gum line. Assortment package of three sizes include circa 90 pieces, 30 pcs/size): S for incisors, M for premolars and XL for molars
- LM-MultiLever™ for the removal of disposable gingival retractors

LMErgoSense®	7556KES
LMErgoMax™	7556KXS



How to use

## LM-ARTE™ INSTRUMENT SETS



The non-stick LM Dark Diamond™ coated LM-Arte™ instruments feature exclusive coating for smooth and precise non-stick placement and sculpting of composite resins.

What do the StyleItaliano™ experts think? Watch the video!



## LM-Arte™ Set

**LMErgoSense®** 6840ES  
**LMErgoMax™** 6840XSI

**Includes:**

- LM-Arte™ Eccesso
- LM-Arte™ Misura
- LM-Arte™ Fissura
- LM-Arte™ Applica
- LM-Arte™ Condensa
- LM-Servo™ 5 cassette

## LM-Arte™ Posterior Set

**LMErgoSense®** 6844ES  
**LMErgoMax™** 6844XSI

**Includes:**

- LM-Arte™ Posterior Misura
- LM-Arte™ Cusp Misura
- LM-Arte™ Fissura
- LM-Arte™ Modella
- LM-Arte™ Condensa
- LM-Servo™ 5 cassette

## LM-Arte™ Complete Set

**LMErgoSense®** 6848ES  
**LMErgoMax™** 6848XSI

**Includes:**

- LM-Arte™ Eccesso
- LM-Arte™ Misura
- LM-Arte™ Applica
- LM-Arte™ Posterior Misura
- LM-Arte™ Cusp Misura
- LM-Arte™ Fissura
- LM-Arte™ Modella
- LM-Arte™ Condensa
- LM-Servo™ 8 cassette

**NEW!**

## LM-Arte™ Dark Diamond set

**LMErgoSense®** 6845ES

- Instruments with LM Dark Diamond™ non-stick coated tips

**Includes:**

- LM-Arte™ Eccesso DD
- LM-Arte™ Modella DD
- LM-Arte™ Fissura DD
- LM-Arte™ Applica DD
- LM-Arte™ Condensa DD
- LM-Servo™ 5 cassette

FOR COMPOSITES MD CE



## Modeller MH

- For packing large, approximal fillings in several layers
- Cylinder shaped working ends won't get stuck into the composite while light curing
- For pressing the matrix band in place while curing

LMErgoSense®	708-709ES
«	708-709EST
LMErgoMax™	708-709XSI



## Modeller MH DD

- With LM Dark Diamond™ non-stick coated tips

LMErgoSense®	708-709DDES
«	708-709DDEST



## Modeller MH Mini

- For packing small or medium approximal fillings in several layers
- Cylinder shaped working ends won't get stuck into the composite while light curing
- For pressing the matrix band in place while curing

LMErgoSense®	707-708ES
«	707-708EST
LMErgoMax™	707-708XSI



## Modeller MH Mini DD

- With LM Dark Diamond™ non-stick coated tips

LMErgoSense®	707-708DDES
«	707-708DDEST



## Flow Instrument IO

- For easy handling and shaping of flowable composites

LMErgoSense®	484-485ES
«	484-485EST
LMErgoMax™	484-485XSI



## Form Condenser, 1.5-2.5 mm

- For shaping and packing of large filling surfaces

LMErgoSense®	702-703ES
«	702-703EST
LMErgoMax™	702-703XSI
LMErgoNorm™	702-703SI



## Composite Spatula 6

- For placing and contouring composite

LMErgoSense®	446-447ES
«	446-447EST
LMErgoMax™	446-447XSI
LMErgoNorm™	446-447SI



Handle options:



LMErgoSense® «

LMErgoSense® «



LMErgoMax™



LMErgoNorm™



### Packer-Modeller IO p

- Combination instrument for premolars

LMErgoSense®	482-702ES
«	482-702EST
LMErgoMax™	482-702XSI
LMErgoNorm™	482-702SI



### Packer-Modeller IO m

- Combination instrument for molars

LMErgoSense®	483-703ES
«	483-703EST
LMErgoMax™	483-703XSI
LMErgoNorm™	483-703SI



### Packer-Modeller IO

- Conical working ends, which are exceptionally well-suited e.g. to shaping of occlusal surfaces and to packing of all kinds of plastics
- Composites do not stick to the highly polished blades



LMErgoSense®	482-483ES
«	482-483EST
LMErgoMax™	482-483XSI
LMErgoNorm™	482-483SI



### Packer-Modeller IO DD

- With LM Dark Diamond™ non-stick coated tips

LMErgoSense®	482-483DDES
«	482-483DDEST



### Plastic Instrument, anterior

- For placing, packing and contouring composite

LMErgoSense®	43-47ES
«	43-47EST
LMErgoMax™	43-47XSI
LMErgoNorm™	43-47SI



### Plastic instrument, anterior DD

- With LM Dark Diamond™ non-stick coated tips

LMErgoSense®	43-47DDES
«	43-47DDEST



### Plastic Instrument, posterior

- For placing, packing and contouring composite

LMErgoSense®	48-702ES
«	48-702EST
LMErgoMax™	48-702XSI
LMErgoNorm™	48-702SI



### Plastic instrument, posterior DD

- With LM Dark Diamond™ non-stick coated tips

LMErgoSense®	48-702DDES
«	48-702DDEST



## CARVERS



For shaping of filling material to fit the anatomy of tooth, and for removal of soft excess.



## Mini Spatula

- For placing and contouring composite

LMErgoSense®	444-445ES
◀	444-445EST
LMErgoMax™	444-445XSI
LMErgoNorm™	444-445SI



## Mini Spatula DD

- With LM Dark Diamond™ non-stick coated tips

LMErgoSense®	444-445DDES
◀	444-445DDEST



## 1/2 Hollenback

- For proximal and cervical surfaces

LMErgoSense®	741-751ES
◀	741-751EST
LMErgoMax™	741-751XSI
LMErgoNorm™	741-751SI



## Carver Maehlum

- For removal of soft excess from gingival margins (71)
- For anatomical shaping of occlusal surfaces (73)

LMErgoSense®	71-73ES
◀	71-73EST
LMErgoMax™	71-73XSI
LMErgoNorm™	71-73SI



## Carver Nystrom I

- For proximal and occlusal surfaces

LMErgoSense®	74-75ES
◀	74-75EST
LMErgoMax™	74-75XSI
LMErgoNorm™	74-75SI



## Carver Nystrom III

- For interdental spaces, contact surfaces

LMErgoSense®	76-77ES
◀	76-77EST
LMErgoMax™	76-77XSI
LMErgoNorm™	76-77SI



## Universal Carver, occlusal-proximal

- For removal of soft excess from gingival margins (71)
- For anatomical shaping of occlusal surfaces (72)

LMErgoSense®	71-72ES
◀	71-72EST
LMErgoMax™	71-72XSI
LMErgoNorm™	71-72SI



## Cleoid-Discoïd

- For anatomical shaping of occlusal surfaces of small fillings

LMErgoSense®	731-732ES
◀	731-732EST
LMErgoMax™	731-732XSI
LMErgoNorm™	731-732SI

## EXCESS SCALERS



## Excess Scaler

- For the removal of adhesive, cement, and composite excesses

LM ErgoSense®	785-795ES
◀	785-795EST
LM ErgoMax™	785-795XSI
LM ErgoNorm™	785-795SI



## Mini Excess Scaler

- An effective excess remover in extremely tight interdental spaces

LM ErgoSense®	784-794ES
◀	784-794EST
LM ErgoMax™	784-794XSI
LM ErgoNorm™	784-794SI

## FILLING REMOVER

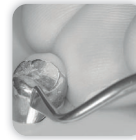


## Filling Remover

- For the removal of temporary fillings and crowns
- For bridge removal during fitting

LM ErgoSense®	764-766ES
◀	764-766EST
LM ErgoMax™	764-766XSI
LM ErgoNorm™	764-766SI

## CROWN OFF



A groove is first burred from the lower edge of the crown up to the occlusal surface. The groove should be so deep that it reaches the cement. The Crown Off working end is placed longitudinally into the groove and turned as if spreading the groove. The blade is turned until the crown loosens and lifts up. The blade stays firmly in the groove and it is easy to control even when lot of force is used.



## Crown Off

- Blade double angled with a 45° twist
- Crown removal instrument

LM ErgoSense®	767-768ES
◀	767-768EST
LM ErgoMax™	767-768XSI

## INSTRUMENT SET



## LM-CompoSet

LM ErgoSense®	6657ES
LM ErgoMax™	6657XSI

## Includes:

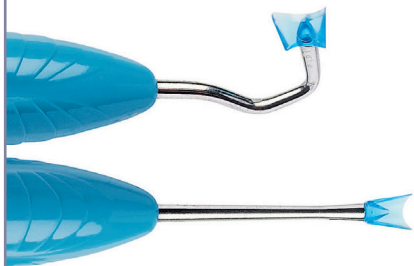
- Mini Spatula
- Plastic instrument, anterior
- Form Condenser
- Packer-Modeller IO
- Mini Excess Scaler
- LM-Servo™ 5 cassette

## LM-MULTIHOLDER™ SYSTEM





LM-MultiHolder™ instruments and different kinds of replaceable plastic working ends – a real multi-function instrument!

Angle options allow for easy access to even the more complex areas. Optimal combination of steel and plastic: the steel shank is rigid and only the working end will flex, when required.

### LM™ INNOVATION







#### LM-MultiHolder™ PK I

	750-756ES
	750-756EST
	750-756XSI
	750-756SI





#### LM-MultiHolder™ PK II

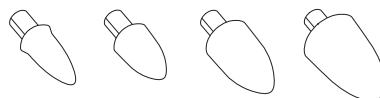
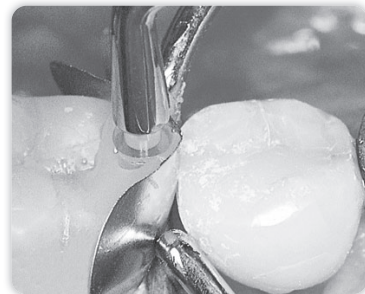
	752-754ES
	752-754EST
	752-754XSI
	752-754SI



#### LM-MultiHolder™ PK III

- See page 47 for LM-Gengiva™

	752-756ES
	752-756EST
	752-756XSI



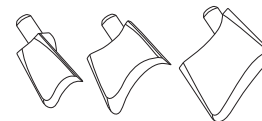
#### LM-Contact Formers

Transparent tip for making correctly formed and tight approximal contact.

- Suitable for use with all matrices
- Will not stick to composite fillings
- Disposable

Four sizes corresponding to the size of the cavity, circa 60 pcs/package:

7622	XS
7624	S
7626	M
7628	L
7620	Assortment package circa 120 pcs (30 pcs/size)



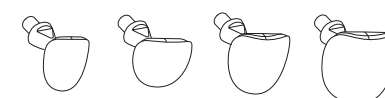
#### LM-Gingival Retractors (blue)

For establishing optimum working conditions for procedures at the gum line.

- Disposable

Three sizes, circa 60 pcs/package:

7502	S for incisors
7504	M for premolars
7506	XL for molars
7500	Assortment package circa 90 pcs (30 pcs/size)



#### LM-Cervical Matrices

For making anatomically correct fillings at the gum line.

- Protects from moisture
- Prevents air bubbles
- Disposable

Four models for different size and shape, circa 60 pcs/package:

7602	for incisors
7604	for canines and premolars
7606	for small molars
7608	for large molars
7600	Assortment package circa 120 pcs (30 pcs/size)

#### LM-MultiHolder™ IntroKit

Introkit contains LM-MultiHolder™ instruments PK I and PK II, LM-MultiLever™ and working end sample package.

(Incl 44 working ends; 4 for each size of each working end type)

7555KES  
7555KXSI  
Separate working end sample package 7555



#### LM-MultiLever™ 7550

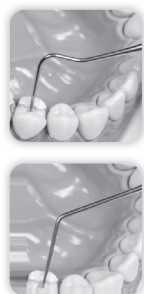
- For the removal of plastic working end

## ROOT CANAL EXPLORER



The instrument's long, sharp tips facilitate the location and opening of root canals to provide access for proper preparation instruments.

**Important!** Only use the instruments for the purpose which they are intended!



Root Canal Explorer

LMErgoSense®	27-28ES
☞	27-28EST
LMErgoMax™	27-28XSI
LMErgoNorm™	27-28SI

## ROOT CANAL EXCAVATORS



Root canal excavators have longer lower shanks and sharper blade angles than round excavators.

- Extended and correctly angled shanks as well as highly effective blade angles allow for the preparation of all types of pulp cavities
- Effective for the cleaning of pulp chambers and location of root canals as well as the removal of temporary fillings



Handle options:



LMErgoSense®



LMErgoMax™



LMErgoNorm™



Root Canal Excavator, 1.0 mm

LMErgoSense®	612-622ES
☞	612-622EST
LMErgoMax™	612-622XSI
LMErgoNorm™	612-622SI



Root Canal Excavator, 1.5 mm

LMErgoSense®	632-642ES
☞	632-642EST
LMErgoMax™	632-642XSI
LMErgoNorm™	632-642SI



Root Canal Excavator, 2.0 mm

LMErgoSense®	652-662ES
☞	652-662EST
LMErgoMax™	652-662XSI
LMErgoNorm™	652-662SI

## ENDO SPREADERS



For the compacting of root canal filling materials during lateral condensation.



Endo Spreader 0.4 mm

LMErgoSense®	24ES
☞	24EST
LMErgoMax™	24XSI



Endo Spreader 0.23 mm

LMErgoSense®	22ES
☞	22EST
LMErgoMax™	22XSI

## ENDO PLUGGER

For the vertical plugging of root canal fillings.



Endo Plugger, 0.5–1.0 mm

LMErgoSense®	41-42ES
☞	41-42EST
LMErgoMax™	41-42XSI
LMErgoNorm™	41-42SI



# Extract with confidence & luxate atraumatically

Familiar LM™ ergonomics and tactile sensitivity also in extracting instruments.

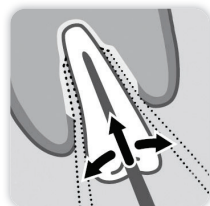
- Ergonomic design
  - comfortable to hold and easy to rotate
- Secure LM-ErgoTouch™ surface
  - light, non-slip grip
- Well-balanced
  - controlled grip
- Lightweight
  - less strain on the hands
- Clear color-coding
  - easy identification
- LM-DuraGradeMAX™ supersteel
  - strong and sharp blades
- Tight seam at blade juncture
  - hygienic

## LM-LIFTOUT™



Luxating instruments for atraumatic extraction.

LM-LiftOut™ instruments allow tooth extraction to be done as atraumatically as possible. This is important in order to enable rapid healing and future implant placement. The thin tip of the instrument is introduced into the periodontal space and slowly advanced toward the apex of the root while twisting the instrument gently back and forth. LM-LiftOut™ is not suitable for use as an elevator.



## STRAIGHT BLADE



2,5 mm

LM-LiftOut™ S2

812220

812220T



3 mm

LM-LiftOut™ S3

812230

812230T



4 mm

LM-LiftOut™ S4

812240

812240T



5 mm

LM-LiftOut™ S5

812250

812250T

## CURVED BLADE



3 mm

LM-LiftOut™ C3

812430

812430T



4 mm

LM-LiftOut™ C4

812440

812440T



5 mm

LM-LiftOut™ C5

812450

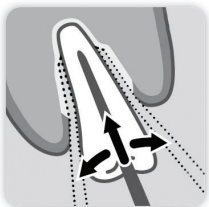
812450T

## LM-SLIMLIFT™



Luxating instruments designed for extremely narrow places.

LM-SlimLift™ instruments are especially designed to reach places you cannot go with traditional luxating instruments. It allows tooth extraction to be done as atraumatically as possible. This is important in order to enable rapid healing. The extremely fine tip of the instrument is introduced into the very narrow periodontal space. The instrument is slowly advanced towards the apex of the root while turning the instrument gently back and forth. The LM-SlimLift™ is not suitable for use as an elevator.



How to use

STRAIGHT  
BLADE

LM-SlimLift™ S3

812630

812630T



LM-SlimLift™ S4

812640

812640T



LM-SlimLift™ S5

812650

812650T

CURVED  
BLADE

LM-SlimLift™ C3

812830

812830T



LM-SlimLift™ C4

812840

812840T



LM-SlimLift™ C5

812850

812850T



The extremely slim design of blade allows for the most atraumatic extractions.

## MAINTENANCE



Cassette



810001

LM™ extraction instruments are supplied in a convenient cassette that protects both the instrument and the handler during the maintenance cycle. The cassette keeps the instrument from puncturing the sterilization pouch, so sterility is more likely to be assured.

- The cassette can be color-coded
- The cassette is compatible with LM-ServoMax™ tray



Sharpening stone

818002

Sharpen the extractors occasionally using the round sharpening stone as a simple and quick way to keep them in top condition and always ready to use.

- Suitable for LM-SlimLift™, LM-LiftOut™, LM-TwistOut™ and LM-RootOut™ instruments

## LM-TWISTOUT™



Elevators for forceful extraction.

LM-TwistOut™ instruments are suitable for tooth extraction in situations where strong force or torque must be applied.



### STRAIGHT BLADE



LM-TwistOut™ S3

814230

814230T



LM-TwistOut™ S4

814240

814240T



LM-TwistOut™ S5

814250

814250T

### CURVED BLADE



LM-TwistOut™ C3

814430

814430T



LM-TwistOut™ C4

814440

814440T



LM-TwistOut™ C5

814450

814450T

## ROOT TIP INSTRUMENTS



LM-RootOut™

### Root Tip Pick

- For the removal of root tip
- Suits well in all difficult to reach areas

LMErgoSense® 769-771ES

769-771EST

LMErgoMax™ 769-771XSI

812210

812210T

## ORTHODONTIC HAND INSTRUMENTS



How to use

## Mirror Handle, ortho

- Orthodontic mirror handle with Bausch-Verbiest design
- For measuring the sagittal overjet and vertical overbite
- Millimeter scale, total length 25 mm

<b>LMErgoSense®</b>	25-26ES
<b>LMErgoSense®</b>	25-26EST
<b>LMErgoMax™</b>	25-26XSI
<b>LMErgoSense®</b>	28-26ES
<b>LMErgoSense®</b>	28-26EST
<b>LMErgoMax™</b>	28-26XSI



## Ligature On-Off SL

- The explorer-like end (17CL) for both application and removal of ligatures. Ligatures can be lined up on the lower shank.
- The forked end (414) is particularly suitable for guiding a ligature ring over e.g. the fourth wing of a bracket.

<b>LMErgoSense®</b>	414-17CLES
<b>LMErgoSense®</b>	414-17CLEST
<b>LMErgoMax™</b>	414-17CLXSI



How to use



## Plastic Ligature Applicator

- For placement of orthodontic rubber ligatures

<b>LMErgoSense®</b>	416-417ES
<b>LMErgoSense®</b>	416-417EST
<b>LMErgoMax™</b>	416-417XSI
<b>LMErgoNorm™</b>	416-417SI



How to use



## Archwire Tucker

- For bending the end of an arch wire
- The flattened ball-ends have 1 mm holes, where the wire can easily be placed and turned.
- Long blade fits well even in tight places.

<b>LMErgoSense®</b>	412-413ES
<b>LMErgoSense®</b>	412-413EST
<b>LMErgoMax™</b>	412-413XSI



How to use



## Ligature Tucker – Scaler U15

- For tucking of ligatures and arch wires (414)
- For removing of cement excesses following the removal of orthodontic appliance (150)

<b>LMErgoSense®</b>	414-150ES
<b>LMErgoSense®</b>	414-150EST
<b>LMErgoMax™</b>	414-150XSI



How to use



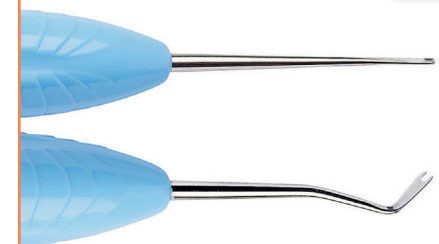
## Ligature Director

- For tucking ligatures and arch wires and for placement of arch wire
- The forked end is particularly suitable for guiding a ligature ring over e.g. the fourth wing of a bracket
- The forked end tip is rotated 90°

<b>LMErgoSense®</b>	411-415ES
<b>LMErgoSense®</b>	411-415EST
<b>LMErgoMax™</b>	411-415XSI



How to use



## Ligature Tucker

- For tucking of ligatures and arch wires and for placement of arch wire
- The forked end is particularly suitable for guiding a ligature ring over e.g. the fourth wing of a bracket.

<b>LMErgoSense®</b>	414-415ES
<b>LMErgoSense®</b>	414-415EST
<b>LMErgoMax™</b>	414-415XSI
<b>LMErgoNorm™</b>	414-415SI



How to use





## LM™ REPROCESSING RECOMMENDATIONS

To take best care of your premium quality products

### DENTAL HAND INSTRUMENT MAINTENANCE WITH CARE

By following LM™ reprocessing recommendations, you can ensure your dental instruments to have both long life and high level performance. To take best care of your high-quality instruments pay attention to the recommendations and ensure that only validated procedures are used for cleaning and sterilization. For the hand instrument maintenance use LM-ServoMax™ tray system and LM-Servo™ cassettes in order to protect the instruments and avoid sharp injuries.

Always follow the regulations by local authorities.

### LESS ADMINISTRATIVE CHORES AND MORE TIME FOR PATIENT CARE

LM Dental Tracking System™ automates traceability, logistics, and aids dental professionals in infection control documentation, streamlining processes and eliminating the necessity for labor-intensive manual tasks.

Implementation of LM Dental Tracking System™ enhances clinician and clinic manager knowledge that the essential reprocessing of materials and instruments has been done correctly, contributing to the safety of both clinicians and patients.



Scan the QR to read and download LM™ Reprocessing recommendations for hand instruments and accessories



# LM Dental Tracking System™

## FOR ENHANCE EFFICIENCY, SAFETY AND SAVINGS

LM Dental Tracking System™ (LM DTS™) is developed to address everyday clinic challenges associated with dental material handling and traceability, including controlling clinic processes, instrument rotation, reuse, as well as inventory materials and consumables handling.

The unique system is created by combining scanning readers, proprietary server software and dental instruments and materials with built-in or external tags. Assets such as instruments, hand pieces, filling materials, implants, and more from various manufacturers can be wirelessly read in just a few seconds.

LM DTS™ automates traceability and dental asset handling processes, supports dental professionals in infection control documentation, and efficiently manages inventory materials and consumables handling. This streamlining of processes eliminates the need for labor-intensive manual tasks. The system allows you to turn vital information into action that makes a difference.

### ENHANCED EFFICIENCY AND TIME SAVINGS

Automating instrument and material tracking, including documentation, significantly saves staff time previously spent on manual checks.

- Allocate additional time to patient care by minimizing administrative duties
- Assurance of instrument and material availability
- Paperless clinic

### INFORMED DECISION-MAKING

Consistently improve practices by continually analyzing performance and monitoring real-time status.

- Ongoing performance improvement
- Instant dental inventory access
- Accessing cloud-based server from anywhere

### ASSURED SAFETY CONFIDENCE

Enhances knowledge that the essential reprocessing of materials and instruments has been done correctly, contributing to the safety of both clinicians and patients.

- Automated checks and alerts
- Material traceability
- Maintenance and sterilization records
- Reprocessing procedure documentation

LM™ INNOVATION



## LM-SERVO™ E INSTRUMENT CASSETTES



In LM-Servo™ E cassettes the instrument handles are clearly visible providing RFID tag readability and identification of individual instruments, though the tips are securely covered with safety shields preventing sharp injuries and protecting the blades.

The LM-Servo™ E cassette series is available with built-in RFID tagging. This option makes E cassettes excellent tool for improving traceability by enabling easy handling and tracking of instruments as sets. Below you find the product codes for RFID tagged cassettes marked with RFID symbol.

The cassettes can be coded with silicone code buttons (6000 – 6005) and attached to the LM-ServoMax™ with a special lock (6417).

## LM-Servo™ 5E

- For five hand instruments
- Cassette is equipped with safety shields of different colors: grey, blue, green and yellow.
- Outer dimensions: 180 x 83 x 26 mm
- Inner dimensions: 174,8 x 78,6 x 21,4 mm



6551 grey  
6551T grey



6552 blue  
6552T blue



6553 green  
6553T green



6554 yellow  
6554T yellow

## LM-Servo™ 8E

- For eight hand instruments
- Cassette is equipped with safety shields of different colors: grey, blue, green and yellow.
- Outer dimensions: 180 x 133 x 26 mm
- Inner dimensions: 174,8 x 128,9 x 21,4 mm



6581 grey  
6581T grey



6582 blue  
6582T blue



6583 green  
6583T green



6584 yellow  
6584T yellow



## LM-SERVOMAX™ TRAY SYSTEM



## LMServoMax™

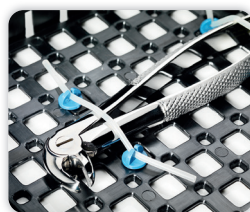
Optimal work flow & rational maintenance.

LM-ServoMax™ tray system organises and rationalises the handling of dental instruments and accessories during the procedures and maintenance. It facilitates good infection control and saves time by reducing the handling of individual items. It also prolongs the life span of instruments and protects the personnel. Its versatile modules keep all instruments and accessories organised in a single tray. The system is adaptable to treatment specific and individual needs.

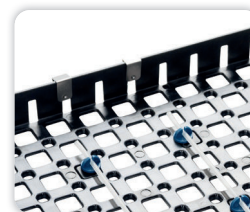


LM-ServoMax™ tray set  
6410

- Includes: 1 set of universal trappers and 2 metal clips
- Dimensions: 288 x 185 x 29 mm



LM-ServoMax™ universal  
trapper,  
2 pcs  
6416



LM-ServoMax™  
metal clips, 2 pcs  
6415

- For locking LM-Servo™ 5 or LM-Servo™ 8 instrument cassette on the tray



LM-ServoMax™  
standard case  
6420



LM-ServoMax™  
restoration / endo case  
6430

LM-ServoMax™ foam,  
20 pcs  
6435

- For cleaning the endo files



LM-ServoMax™  
ultrasonic tip case  
6460

- For six ultrasonic tips



LM-ServoMax™ bur  
endofile case  
6450

- For eight burs and fourteen files
- Includes adjustment and measuring scales for files



LM-ServoMax™  
syringe holder  
6495

- A stand attachable to the LM-ServoMax™ tray to place the anesthetic syringe safely in the needle guard

## LM™ INNOVATION

Rational maintenance with minimal handling.










■ LM-ServoMax™ tray system modules have a universal design that complies the standard for dental tray dimensions. They are made of exceptionally durable special plastic which tolerate all common cleaning and sterilisation methods and agents (max 134 °C / 273 °F). Modules are sold empty.



LM-ServoMax™ waste cup holder  
6490



LM-ServoMax™ instrument rack

-  6471 black
-  6472 orange
-  6473 blue
-  6474 red
-  6475 green

- Color-coded rails for attaching instruments to the LM-ServoMax™ tray
- Length adjustable according to the size of instruments
- Package 2 pcs / color

## LM-SERVO™ CASSETTES



In LM-Servo™ cassettes hand instruments are locked securely but rotate freely for optimal cleaning and guaranteed infection control. The cassettes can be coded with silicone code buttons.

The cassettes can be attached to the LM-ServoMax™ tray with metal clips (6415).

### LM™ INNOVATION



Code Buttons

LM-Servo™ 5  
6650

- For five hand instruments
- Dimensions: 180 x 86 x 28 mm



Code Buttons

LM-Servo™ 8  
6680

- For eight hand instruments
- Dimensions: 180 x 136 x 28 mm

## CODING PRODUCTS

### Code buttons

-  6000 blue
-  6001 green
-  6002 orange
-  6003 red
-  6004 yellow
-  6005 brown

- For color-coding the LM-Servo™ and LM-Servo™ E cassettes
- Package 20 pcs / color



### Code rings

-  5000 blue
-  5001 green
-  5002 orange
-  5003 red
-  5004 yellow
-  5005 black
-  5006 white
-  5007 brown
-  5008 lavender
-  5009 pink
-  5010 dark grey
-  5011 lime

- For color-coding hand instruments
- Package 50 pcs / color

Regular maintenance of dental hand instruments is the foundation of safe and high quality treatments.

In addition to cleanliness, instrument condition has a significant impact on the end result of a treatment as well as your and your patient's safety. When discussing hand instruments, a critical factor is the instrument blade. Only working with sharp instruments will ensure an optimal treatment result.

LM-RondoPlus™ is a simple and reliable sharpening machine, which is suitable for use with all hand instruments that can be resharpener. LM-RondoPlus™ sharpens all hand instruments easily, quickly and precisely.

Regular sharpening allows you to work with a sharp instrument, which reduces the amount of strain on your hand and enhances safety from one treatment to the next. The service life of a regularly sharpened instrument is also longer than one that is not maintained well.



Scan the QR for videos and more information.

LM™ INNOVATION

## LMRondoPlus™ sharpening machine

360° rotating casing

### Foot pedal connection

Use of the foot pedal is optional. When the foot pedal is connected, the sharpening stone will only rotate when you press down on the pedal. The rotational direction is still selected with the rocker switch.

Rocker switch  
(direction control)

### Sharpening stone

LM-RondoPlus™ comes equipped with a ceramic 400 grit sharpening stone. A finer (600 grit) and a coarser (320 grit) stone are available as spare parts. The stone rotates in two directions. When the stone rotates away from the instrument, the sharpening effect is more delicate. For more sharpening power use a coarser stone that rotates toward the instrument. The direction of rotation is chosen from the rocker switch.

### Instrument rest

The instrument rest has two positions. The lower position is for periodontal instruments and the upper position is for preparation instruments. The position is changed by lifting the rest slightly away from the sharpening stone and then up or down. The instrument rest must be as close as possible to the sharpening stone without actually touching it. Screw the control to adjust the distance between the rest and the stone.

### Testing sharpness

LM-RondoPlus™ is equipped with LM-Fingo™ sharpness test sticks, which can be mounted on either side of the machine or worn on the finger. Sharpness is easy to test by drawing the instrument lightly in its working position along LM-Fingo™. Sharp instrument will bite into the stick.

## EASY SHARPENING

LM-RondoPlus™ is suitable for use with all hand instruments that can be resharpener. Thanks to its simple operation method, learning how to use the machine takes only a few moments.

The ceramic sharpening stone is mounted in a casing, which can rotate 360°. The instrument being sharpened is placed on the instrument rest next to the sharpening stone. The lower rest position is for periodontal instruments while the upper position is for preparation instruments. The hand holding the instrument remains still – the instrument is sharpened by rotating the casing.

With LM-RondoPlus™ the same basic technique is used, whether the instruments to be resharpened are periodontal or preparation instruments, or have convex or straight cutting edges.

LM-RondoPlus™ 8600

### Package includes:

- Sharpening machine
- Foot pedal
- 400 grit sharpening stone
- 2 LM-Fingos™
- 5 emery tapes

### Spare Parts

#### Grinding stone

- 8660 600 grit (white)
- 8640 400 grit, coarser (grey)
- 8632 320 grit, coarsest (black)

- 8630 Foot pedal
- 8550 Emery tapes, 5 pcs
- 8602 LM-Fingo™, 2 pcs
- 8606 LM-Fingo™, 6 pcs



On either side of the LM-RondoPlus™ there are LM-Fingo™ test sticks. Sharpness can be tested both with Fingo mounted on the LM-RondoPlus™ or your finger. The Fingo is made of an acrylic plastic and is sized to fit all users.



### Easy to use

- Simple method - the blade is held in the correct sharpening position and the grinding stone rotates.
- Sharpening one instrument only takes a few seconds.

### Versatile

- For both periodontal and preparation instruments.
- For both right or left handed.
- The direction of rotation can be selected.

### Accurate and safe

- A dual-position instrument rest: The upper position is for preparation instruments and the lower for periodontal instruments.
- The original blade form is preserved.
- Low rotational speed: the blade will not heat up nor will its temper be affected.



## LM-Activator™ - Early orthodontic treatment

LM-Activator™ is a prefabricated appliance for supporting healthy growth and development of the face and jaw. The ideal time for treatment with LM-Activator™ is in early mixed dentition when the first teeth are changing. By intervening early, the need for further treatment can be significantly reduced and even eliminated. Research indicates that malocclusions in deciduous dentition persist and tend to become more severe as the dentition develops. LM-Activator™ provides soft guidance to teeth and jaws when needed.

### How does LM-Activator™ work?

- LM-Activator™ acts as a guide towards the correct position and place. Teeth and jaws are guided into correct positions and relation while teeth are changing in early mixed dentition.
- The forces of erupting teeth and the growth are utilized. The light and interceptive treatment supports the natural growth and development of teeth and jaws, and malocclusions are corrected.
- LM-Activator™ can be used at different ages. When the first milk tooth falls out, the opportunities for guiding both the teeth and jaws are wide.
- LM-Activator™ corrects and aligns sagittal and vertical relationships simultaneously - no separate phases are needed. The occlusion can be controlled in a 3-dimensional way.

Scan the QR and watch the video:  
**How does LM-Activator™ work**



Gently guiding the growth of erupting teeth and growing jaws can be compared to trimming and supporting a young plant. Guiding to a healthy growth path early and along the growth is more gentle and the outcome will be more natural.



*"The appliance has many advantages. Most importantly, early treatment with LM-Activator™ will stop the development of the malocclusions, thereby preventing the malocclusion to become more severe. For children, LM-Activator™ is easy to use. The treatment is easy and straightforward, and the treatment outcome more natural."*

Professor Emeritus Juha Varrela, DDS, PhD, Specialist in Orthodontics, Institute of Dentistry, University of Turku, Finland



## Benefits for A DENTIST

### Corrects malocclusions effectively

Corrects typical malocclusions like excess Overjet, excess Overbite, Deep bite, Open bite, Class II and dental anterior Crossbite. Sagittal and vertical relationships can be corrected simultaneously.

✓ **Preventive.** Prevents the malocclusion from developing further.

✓ **Reduced need for treatment.** Can significantly reduce the need for further treatment.

✓ **Clinically and scientifically proven.** LM-Activator™ has been on the market since 2004 and the method is supported by evidence from cohort controlled and RCT research results.

### Cost-effective treatment method

Reduced treatment complexity enabling increased savings and time saved for treating more patients.

✓ **Diverse.** Convenient assortment of models.

✓ **Cost-effective.** Appliance is affordable.

✓ **Prompt.** Treatment can be started immediately.

✓ **Efficient.** Light on chair-times as check-ups are short and not that frequent.

✓ **Collaborative.** The clinical work does not require full involvement by orthodontists.



## Benefits for A YOUNG PATIENT

### Comfortable to use

✓ **Made of medical-grade silicone.** Flexible by nature and comfortable for the patient.

✓ **Hygienic.** Daily rinse with water is enough. Can be immersed in boiling water.

✓ **Removable and used while sleeping.** Patient can eat any food normally, exercise and do any sport. No metal wire adjustments or emergency visits are needed due to broken metal parts.

✓ **Feels comfortable.** Anatomically designed and rounded slots.

✓ **Gentle on teeth.** Soft silicone is gentle on teeth and comfortable for the patient.

✓ **Simple and easy treatment.** No separate treatment phases but simultaneous alignment, leveling and anteroposterior correction.

### Safe for young patients

✓ **No additives.** No coloring agents, phthalates, softeners, latex, bisphenol-A or fragrance agents.

✓ **Fully biocompatible.** The use is safe for the patient. The silicone material is tested in accordance with ISO 10993 requirement of 30 days permanent contact with mucous membranes.

✓ **No need for emergency visits** because of the soft silicone material.

✓ **Evidence based treatment method.** The treatment method is proven by research results, and the appliance has been used by a million of patients around the world.



## INDICATIONS - when to use LM-Activator™?

LM-Activator™ has proven to be effective in treatment of different malocclusions at different dental stages. Evaluating the dentoalveolar, skeletal and functional characteristics is an essential part of selecting patients for LM-Activator™ treatment. A thorough case-by-case analysis of the patient's malocclusion and its severity as well as of the patients motivation is needed.

The ideal time for treatment with LM-Activator™ is in early mixed dentition when the first teeth are changing. Use of LM-Activator™ is recommended to align teeth, activate mandibular growth and expand the arch perimeter. The chart below provides a demonstrative guideline for case selection.

		Deciduous dentition	Early mixed dentition 5–8 years old	Late mixed dentition 9–13 years old	Early permanent dentition 13– years old
Excess overjet, excess overbite, deep bite	Severe				
	Moderate				
	Mild				
Anterior crowding (incisors and canines)	Severe				
	Moderate				
	Mild				
Dentoalveolar anterior crossbite of 1-2 teeth	Severe				
	Moderate				
	Mild				
Rotated anterior teeth	Severe				
	Moderate				
	Mild				
Class II	Severe				
	Moderate				
	Mild				
Scissorsbite / Complete mandibular posterior lingual crossbite (i.e. mandibular posterior teeth completely on the lingual side of the maxillary posterior teeth)	Severe				
	Moderate				
	Mild				
Gummy Smile (Treatment start before the eruption of permanent maxillary central incisors)	Severe				
	Moderate				
	Mild				
Open bite	Severe				
	Moderate				
	Mild				

- Use of LM-Activator™ recommended
- Use of LM-Activator™ can be considered

Effect not proven for:

- Skeletal Class III
- Midline discrepancy > 3mm \*)
- Very narrow upper arch \*)
- Palatally impacted teeth \*)
- Fully erupted anterior teeth that require torqueing \*)
- Teeth requiring intrusion

\*) May be treated with combination treatment (LM-Activator™ together with other appliances such as quad helix)

### Proven by research | References

- [1] Keski-Nisula, K., Hernesniemi, R., Heiskanen, M., Keski-Nisula, L., & Varrela, J. Orthodontic intervention in the early mixed dentition: A prospective, controlled study on the effects of the eruption guidance appliance. *AM J of Orthodontics and Dentofacial Orthopedics*, 2008;133(2), 254-260. <https://doi.org/10.1016/j.ajodo.2006.05.039>
- [2] Keski-Nisula K., Keski-Nisula L., Varrela J. Class II treatment in early mixed dentition with the eruption guidance appliance: effects and long-term stability. *European Journal of Orthodontics*, 2020;42(2):151-156. <https://doi.org/10.1093/ejo/cjz092>
- [3] Keski-Nisula K., Keski-Nisula L., Salo H., Voipio K., Varrela J. Dentofacial changes after Orthodontic Intervention with Eruption Guidance Appliance in the Early Mixed Dentition. *Angle Orthod* 2008;78(2):324-331. <https://doi.org/10.2319/012607-37.1>
- [4] Myrland R., Dubland M., Keski-Nisula K., Kerosuo H. One year treatment effects of the eruption guidance appliance in 7- to 8-year -old children: a randomized clinical trial. *European Journal of Orthodontics*, 2015;37(2):128-134. <https://doi.org/10.1093/ejo/cjy014>
- [5] Myrland R., Keski-Nisula K., Kerosuo H. Stability of orthodontic treatment outcomes after 1-year treatment with the eruption guidance appliance in the early mixed dentition: A follow-up study. *Angle Orthod* 2019; 89(2):206-213. <https://doi.org/10.2319/041018-269.1>
- [6] Kerosuo, H., Heikinheimo, K., Nyström, M., Väkiparta, M. Outcome and long-term stability of an early orthodontic treatment strategy in public health care. *European Journal of Orthodontics* 2013;35(2):183-189. <https://doi.org/10.1093/ejo/cjs087>
- [7] Bishara S., B. Hoppens B., Jakobsen J., F. Kohout. Changes in the molar relationship between the deciduous and permanent dentitions: A longitudinal study. *AM J Orthodontics and Dentofacial Orthopedics* 1988;93(1):19-28. [https://doi.org/10.1016/0889-5406\(88\)90189-8](https://doi.org/10.1016/0889-5406(88)90189-8)
- [8] Glasl B., Ludwig B., Schopf P. Prevalence and Development of KIG-relevant Symptoms in Primary School Students from Frankfurt am Main\* Prävalenz und Entwicklung KIG-relevanter Befunde bei Grundschulern aus Frankfurt am Main\*. *Journal of Orofacial Orthopedics / Fortschritte der Kieferorthopädie* 2006;67(6):414-423. <https://doi.org/10.1007/s00056-006-0615-8>
- [9] Janson G. R., da Silva C. C., Bergersen E. O., Henriques J. F., Pinzan A. Eruption guidance appliance effects in the treatment of Class II, Division 1 malocclusions. *AM J of Orthodontics and Dentofacial Orthopedics* 2000;117(2), 119-129. [https://doi.org/10.1016/s0889-5406\(00\)70222-8](https://doi.org/10.1016/s0889-5406(00)70222-8)

The treating doctor is solely responsible and liable for diagnosis, treatment, and evaluating whether treatment with LM-Activator™, LM-Trainer™ or any other LM-Dental™'s product is appropriate for a specific patient, and for the outcome of any treatment with LM-Activator™, LM-Trainer™ or any other LM-Dental™'s product. Product used, and use of products shall be determined solely by doctor and evaluated for use with each individual patient where appropriate. Please refer to manufacturer's instructions for use.

# TYPICAL MALOCCLUSIONS treated with LM-Activator™

Overjet <sup>1)</sup>



Before



After 1 year

Single tooth anterior crossbite <sup>2)</sup>



Before



After 15 days

Deep bite with palatal impingement <sup>1)</sup>



Before



After 1 year

Crowding <sup>3)</sup>



Before



After 1 year

Clinical pictures courtesy of <sup>1)</sup> and <sup>2)</sup> Dr. Rita Myrland and Dr. Mari Dubland, University of Tromsø, Norway. <sup>3)</sup> Dr. Gioacchino Pellegrino, Management of eruption problems with preformed silicone orthodontic devices, Poster presented at 21. Jahrestagung der Deutsche Gesellschaft für Kinderzahnheilkunde 25.09 - 27.09 2014; Freiburg, Germany



*“Our results showed distinct improvements in overjet, overbite, sagittal molar relationship, and crowding in the treated subjects.”*

Myrland R., et al. One year treatment effects of the eruption guidance appliance in 7- to 8-year-old children: a randomized clinical trial. *European Journal of Orthodontics*, 2015;37(2):128-134. <https://doi.org/10.1093/ejo/cju014>



*“An advantage of the eruption guidance appliance is that it not only guides the eruption of the teeth but also simultaneously acts on the transversal, sagittal, and vertical relationships of both dental arches.”*

Keski-Nisula, K., et al. J. Orthodontic intervention in the early mixed dentition: A prospective, controlled study on the effects of the eruption guidance appliance. *AM J of Orthodontics and Dentofacial Orthopedics*, 2008;133(2), 254-260. <https://doi.org/10.1016/j.ajodo.2006.05.039>



*“As a result of the EGA treatment, the sagittal relationship was corrected from Class II to Class I in 86% of the cases during the active treatment, and it showed further improvement post-treatment. At the age of 16.7 years, 98% of the treatment children, who all had a Class II relationship at the onset of the early mixed dentition, had a Class I relationship.”*

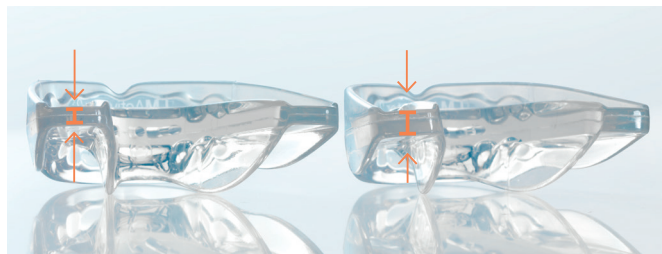
Keski-Nisula K., et al. Class II treatment in early mixed dentition with the eruption guidance appliance: effects and long-term stability. *European Journal of Orthodontics*, 2020;42(2):151-156. <https://doi.org/10.1093/ejo/cjz092>



## LM-Activator™ MODEL ASSORTMENT features

With LM-Activator™ alignment, leveling and anteroposterior correction can be done at the same time without separate phases. A large assortment of models makes it possible to select the appropriate appliance for the patient. Treatment complexity for both the clinician and the patient can be reduced.

The two basic LM-Activator™ model features are: **LOW** and **HIGH**. These are available with shorter or longer molar sections: **SHORT** and **LONG**. The appliances are combinations of these features. LM-Activator™ 2 models available also for two arch widths: **NARROW** or **WIDE**. **REINFORCED** model with hard insert in the incisal area is available. We recommend it for patients over 8 years of age only. The choice of model should always be based on an examination and diagnosis done by or under supervision of a specialist in orthodontic treatment.



### LOW

Model with basic appliance thickness is applicable to many different cases.

### HIGH

Model with thicker premolar and molar area. Specifically designed for treating skeletal and dentoalveolar open bite cases.



### SHORT

Model with a shorter molar section for patients whose second molars have not yet erupted.

### LONG

Model with a longer molar section for patients whose second molars have erupted.



### NARROW

### WIDE

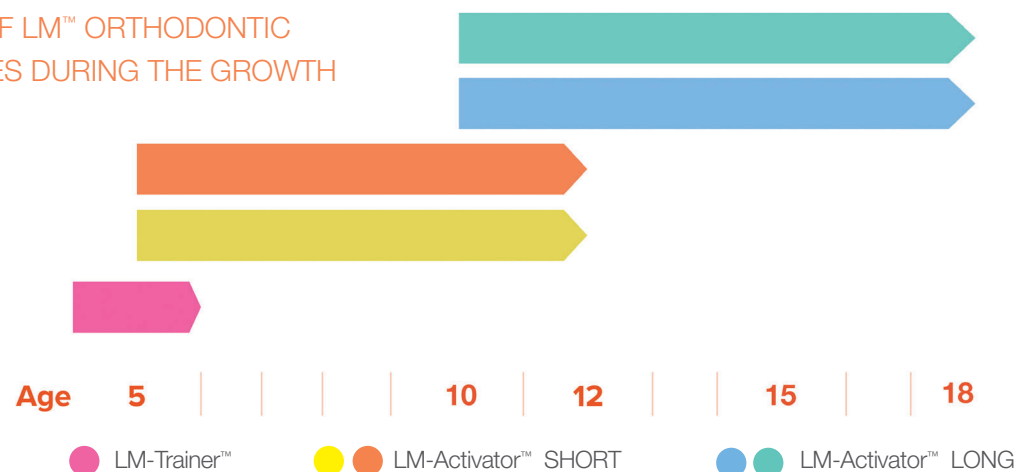
There are two different arch widths of all basic models. The most commonly used arch width is **NARROW** with standard or regular arch. The **WIDE** model has a wider and shorter arch, and is especially designed for Asian markets.



### REINFORCED

LM-Activator™ 2 models are available with incisal reinforcement. This model has a rigid reinforcement of harder material in the incisal area and is designed especially for skeletal deep bite cases. The model is also suitable for other patients who benefit from a firm surface and improved durability. Reinforced model is recommended for patients over 8 years old.

### THE USE OF LM™ ORTHODONTIC APPLIANCES DURING THE GROWTH





## Selecting THE SIZE with LM-OrthoSizer™ MD CE

LM-OrthoSizer™ is a tool for aiding the selection of the appropriate LM-Activator™ size. The size is indicative and LM-Activator™ should always be fitted to ensure the correct size. There are two models: one for LM-Activator™ (9400) and another for LM-Activator™ 2 (9402). Both are compatible with LM™ mirror handles (25, 28).



**LM-Activator™ 2 OrthoSizer™ (9402)**  
is used with LM-Activator™ 2 models.  
Separate measures for mandible and maxilla  
improve the accuracy.



**LM-OrthoSizer™ (9400)**  
is used with LM-Activator™ models.

LM-Activator™ 2 OrthoSizer™ measures the distance across the incisors from the distal surface of the left lateral incisor to the right lateral incisor.

Place the elevated marker between the left maxillary lateral incisor and canine. Ensure that the text *Maxilla* is at the upper jaw and the text *Mandibula* at the lower jaw.

Read the scale between the right maxillary lateral incisor and canine (i.e. at the mesial surface of the canine). Sizes 10, 20, 30... are indicated with larger markers with a dot whereas sizes 15, 25, 35... are indicated with smaller markers. (In the right side photo the size indication is 55.) If you wish to get an indication of the size separately for the mandible, use the LM-Activator™ 2 OrthoSizer™ in the same way in the mandible.

In case of crowding, consider a larger appliance and in case of diastemas, consider a smaller appliance. Fit LM-Activator™ on the patient and double check that the teeth sit properly in the slots both in the maxilla and in the mandible.



## Fitting

Fitting the appliance to the patient is the most important step of size selection.



### 1. No crowding and no risk of crowding

Choose the size that matches the dentition. The canine rests at the bottom of the slot and no distalizing force is placed on the canine. If there is no crowding or risk of crowding, the size in the photo is correct. If there is crowding or crowding is expected, consider a larger size to enable expansion of the arch perimeter. In case of diastema consider choosing a smaller size.



### 2. Crowding or risk of crowding

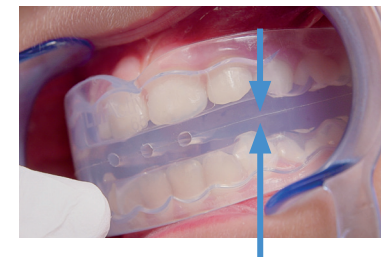
This size is larger than in Figure 1.

The canine is guided by LM-Activator™ towards the bottom of its' slot and applies a force that pushes the canine distally. This size is appropriate if crowding is present or expected and arch perimeter expansion is needed.



### 3. The size is too large

The appliance is too large. The canine is guided against a ridge between two slots and the appliance does not guide teeth properly. Choose a smaller size.



At follow-up check-ups with the patient, ensure that the size is still correct.

Re-evaluate the size of the appliance when the permanent maxillary and mandibular lateral incisors begin to erupt. It may be necessary to switch to a larger appliance.



Scan the QR and watch the video:  
**Selecting the size and fit of  
LM-Activator™**

# General steps on HOW TO CHOOSE the LM-Activator™ MODEL

The selection chart below provides some general basic guidelines on choosing the right LM-Activator™ appliance for the patient. It is solely the responsibility of the treating doctor to evaluate and determine which model is best suitable for the individual patient.



Scan the QR and watch video:  
Guidelines on how to choose  
the LM-Activator™ model

## STEP 1



Malocclusion type?

Increased overjet  
Increased overbite/deep bite  
Anterior crowding  
Dentoalveolar anterior crossbite  
Rotated anterior teeth  
Class II  
Scissorsbite  
Complete mandibular posterior lingual crossbite  
Gummy smile



LOW

Anterior open bite  
(Use High model of LM-Activator™)



HIGH



Growth pattern /  
Facial type?

Low  
Neutral



LOW

High



HIGH

Low angle  
Short face

Hypodivergent  
Brachyfacial

Neutral angle  
Neutral growth pattern

Mesofacial

High angle  
Long face  
Hyperdivergent  
Dolichofacial

## STEP 2



Have the permanent  
second molars erupted?

No



SHORT

Yes

Erupting soon



LONG

## STEP 3



Dental arch width?

Narrow / Regular



NARROW

Wide



WIDE

## STEP 4



Is reinforcement needed  
in incisal area?

Yes



REINFORCED

*"We can control the occlusion in a three dimensional way with LM-Activator™. We are able to control overbite, overjet, the lateral contacts of the lower and upper arch and to modify the sagittal growth."*



Dr. Gioacchino Pellegrino, DDS,  
Specialist in Orthodontics, Italy

The treating doctor is solely responsible and liable for diagnosis, treatment, and evaluating whether treatment with LM-Activator™, LM-Trainer™ or any other LM-Dental™'s product is appropriate for a specific patient, and for the outcome of any treatment with LM-Activator™, LM-Trainer™ or any other LM-Dental™ product. Product used, and use of products shall be determined solely by doctor and evaluated for use with each individual patient where appropriate. Please refer to manufacturer's instructions for use.

The LM-Activator™ model features are: LOW and HIGH. These are available with shorter or longer molar sections: SHORT and LONG. The appliances are combinations of these features. The LM-Activator™ 2 models are available with incisal reinforcement for increased durability, REINFORCED. We recommend it for patients over 8 years of age only.

LM-Activator™ 2 models have two alternative arch widths. The most commonly used arch width is NARROW with standard or regular arch. The WIDE model has a wider and shorter arch, and is especially designed for Asian markets. It is suitable also for some Latin American markets. The choice of model should always be based on an examination and diagnosis done by or under supervision of a specialist in orthodontic treatment.



## LM-Activator™ 2 product range

### LM-Activator™ 2 Low Short

Model with a shorter molar section when the second molars have not yet erupted. Delivered in a yellow box.

PRODUCT CODES				
SIZE	NARROW	REINFORCED	WIDE	REINFORCED
35	94235LSN	94235LSNR	94235LSW	94235LSWR
40	94240LSN	94240LSNR	94240LSW	94240LSWR
45	94245LSN	94245LSNR	94245LSW	94245LSWR
50	94250LSN	94250LSNR	94250LSW	94250LSWR
55	94255LSN	94255LSNR	94255LSW	94255LSWR
60	94260LSN	94260LSNR	94260LSW	94260LSWR
65	94265LSN	94265LSNR	94265LSW	94265LSWR
70	94270LSN	94270LSNR	94270LSW	94270LSWR

### LM-Activator™ 2 Low Long

Model with a longer molar section when the second molars have erupted. Delivered in a blue box.

PRODUCT CODES				
SIZE	NARROW	REINFORCED	WIDE	REINFORCED
35	94235LLN	94235LLNR	94235LLW	94235LLWR
40	94240LLN	94240LLNR	94240LLW	94240LLWR
45	94245LLN	94245LLNR	94245LLW	94245LLWR
50	94250LLN	94250LLNR	94250LLW	94250LLWR
55	94255LLN	94255LLNR	94255LLW	94255LLWR
60	94260LLN	94260LLNR	94260LLW	94260LLWR
65	94265LLN	94265LLNR	94265LLW	94265LLWR
70	94270LLN	94270LLNR	94270LLW	94270LLWR

### LM-Activator™ 2 High Short

Model with a shorter molar section. The High model is thicker in the region of second premolars and molars. It is designed for treating skeletal and dentoalveolar Open bite cases. Delivered in an orange box.

PRODUCT CODES		
SIZE	NARROW	WIDE
35	94235HSN	94235HSW
40	94240HSN	94240HSW
45	94245HSN	94245HSW
50	94250HSN	94250HSW
55	94255HSN	94255HSW
60	94260HSN	94260HSW
65	94265HSN	94265HSW
70	94270HSN	94270HSW

### LM-Activator™ 2 High Long

Model with a longer molar section. The High model is thicker in the region of second premolars and molars. It is designed for treating skeletal and dentoalveolar Open bite cases. Delivered in a green box.

PRODUCT CODES		
SIZE	NARROW	WIDE
35	94235HLN	94235HLW
40	94240HLN	94240HLW
45	94245HLN	94245HLW
50	94250HLN	94250HLW
55	94255HLN	94255HLW
60	94260HLN	94260HLW
65	94265HLN	94265HLW
70	94270HLN	94270HLW

## LM-Activator™ product range

### LM-Activator™ Low Short

Model with a shorter molar section when the molars have not yet erupted. Delivered in a yellow box.

SIZE	NARROW
10	94010LS
15	94015LS
20	94020LS
25	94025LS
30	94030LS
35	94035LS
40	94040LS
45	94045LS
50	94050LS
55	94055LS
60	94060LS
65	94065LS
70	94070LS



### LM-Activator™ Low Long

Model with a longer molar section when the second molars have erupted. Delivered in a blue box.

SIZE	NARROW
40	94040L
45	94045L
50	94050L
55	94055L
60	94060L
65	94065L
70	94070L



### LM-Activator™ High Short

Model with a shorter molar section. The High model is thicker in the region of second premolars and molars. It is designed for treating skeletal and dentoalveolar Open bite cases. Delivered in an orange box.

SIZE	NARROW
20	94020HS
25	94025HS
30	94030HS
35	94035HS
40	94040HS
45	94045HS
50	94050HS
55	94055HS
60	94060HS
65	94065HS
70	94070HS



### LM-Activator™ High Long

Model with a longer molar section. The High model is thicker in the region of second premolars and molars. It is designed for treating skeletal and dentoalveolar Open bite cases. Delivered in a green box.

SIZE	NARROW
45	94045H
50	94050H
55	94055H
60	94060H
65	94065H
70	94070H



## LM-Trainer™ products

LM-Trainer™ can be used in deciduous dentition, e.g. before LM-Activator™ treatment. It can also be used in functional education and for habit correction, e.g. reverse swallowing and mouth breathing, when harmful oral habits risk causing malocclusions.



LM-Trainer™ Small  
94100S

- Slots for incisors, lip bumper
- Smaller and softer than LM-Trainer™ Medium



LM-Trainer™ Medium  
94100T

- Slots for incisors and cuspids
- Lip bumper



LM-Trainer™ 2 Medium  
94100T2

- Bigger than LM-Trainer™ Medium
- High gloss surface
- Slots for incisors and cuspids
- High labial shields and shaped lingual flanges
- Enhanced lip bumper



LM-Trainer™ Braces  
94100TB

- Used in conjunction with brackets and wires
- Brings the mandible forward for Class II correction
- Prevents irritation and wounding of soft tissue
- Lip bumper



For more information on early orthodontics and LM-Activator™ visit [www.lm-activator.com](http://www.lm-activator.com)



## LM-Activator™ motivational materials

Patient compliance is essential for successful treatment. The first month is crucial in adopting the habit to use the appliance, because creating a habit in general requires 3-4 weeks of regularity. To motivate the patient and his/her family, age appropriate material is available for both preadolescents and adolescents. It is important to make sure the patient and the family understands that irregular use may be equivalent with no treatment at all.



LM-Activator™ patient motivation path with stickers M1063A

- The language-independent motivation path is used to motivate the daily use of the LM-Activator™ appliance. A young patient is supposed to place a sticker on the calendar path every time she/he wears the appliance (day or night).



How to use LM-Activator™  
Patient Guidance brochure M1062EN

- Cartoon styled guidance for parents and patients on how to use LM-Activator™.
- Includes also a calendar for tracking daytime and night-time use. English.



LM-Activator™ Clinic brochure  
"Growing happy smiles" 1061EN

- Take-away brochure for clinics to introduce and promote LM-Activator™ treatment for parents. English.



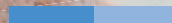
LM-Activator™ Clinic poster  
M1059EN

- For promotion Early orthodontic treatment with LM-Activator™ in a waiting room at a dental clinic. English.





Making dental care safe, efficient and pleasant.



Exclusively distributed by Curion



2571 Smith Street Richmond, BC., V6X 2J1 Canada  
EN: 1.800.667.8811 | FR: 1.800.211.1200  
curion.ca | wecare@curion.ca

# LM Dental™

 LM-Instruments Oy

Norrbyn rantatie 8 | FI-21600 Parainen | Finland

Tel. +358 2 4546 400

info@lm-dental.com | www.lm-dental.com

## Making dental care safe, efficient and pleasant.