



SCIENCE
AND DENTISTRY.
BONDED.



PRODUCT SPOTLIGHT



Exclusively distributed by Curion

curion.ca | EN: 1.800.667.8811 | FR: 1.800.211.1200



Table of Contents

- **Educational**
 - Free Education Resources & Bonding and Beer Podcast Page 3
- **Adhesives**
 - All-Bond Universal® Page 4
- **Composites**
 - Quantium™ Page 5
- **Cements**
 - Duo-Link Universal™ Page 7
 - Choice 2™ Page 8
- **TheraFamily**
 - TheraCal LC® Page 9
 - TheraCal PT® Page 10
 - TheraCem® Page 11
 - TheraBase® Page 12
- **Primers**
 - Z-Prime™ Plus. Page 13
- **Supportive Products**
 - ZirClean® Page 14
- **Core Materials**
 - Core-Flo™ DC, & Core-Flo™ DC Lite Page 15
- **Etchants**
 - Select HV® Etch w/BAC, & Uni-Etch® w/BAC Page 16
- **Techniques**
 - Self-Etch, Total-Etch, and Selective-Etch Bonding Page 18
 - Pulp Exposures (Direct Pulp Capping) Page 19
 - Deep Preparations (Indirect Pulp Capping) Page 19
 - Sandwich Technique Page 20
 - Pulpotomy Page 20
 - Core Build-ups Page 21
 - Intraoral Repairs of Porcelain (PFM or PFZr) Page 22
 - Conventional Cementation of Crowns (Retentive Preps) Page 23
 - Bonded Cementation of Inlays/Onlays, Bridges, Crowns (Short/Tapered Preps) Page 24
 - Veneer Cementation Page 25
 - Direct Posterior Composite Restoration Page 26
- **Quick Guides**
 - Zirconia Bonding & Sandwich Technique Page 27
 - Veneer Cementation & Cementation With a Bonding Agent Page 28
 - Cementation Without a Bonding Agent & Post Cementation With Core Build-up Page 29
- **BISCO Bonding Rewards**
 - BISCO Bonding Rewards Page 30

Visit us at www.bisco.com for a complete product catalog!

RESTORATION SIMPLIFIED.

BISCO's founder Dr. Byoung Suh began his scientific career as a research chemist developing restorative bonding products. In 1981, he founded BISCO to provide simplified, effective restorative solutions. Over 40 years later, his goals continue to guide BISCO's drive to revolutionize bonding and make better dentistry possible across 4 key areas:



TREATMENT OUTCOMES

Get tested solutions built to seamlessly integrate with your protocols and help you perform.



EFFICIENCY

Eliminate steps and save chair time with streamlined processes and consistently successful restorations.



COST SAVINGS

Reduce your inventory using products designed to work well as a system and with other solutions.



PATIENT SATISFACTION

Improve the patient experience and reduce complications like de-bonding and post-op sensitivity.



WHAT OUR CUSTOMERS HAVE TO SAY:



"BISCO is a solid organization, from chemical science to clinical delivery. Their top-notch customer service and knowledgeable team help me understand the research behind their materials, giving me confidence in patient care. Dentistry can be unpredictable, but with BISCO, I know I'll get consistent, reliable results."

Lauren Yasuda Rainey, DDS



"BISCO puts out very good products that every general dentist can use, and these competitively priced products produce outstanding results. BISCO just provides the personal touch."

John Horn, DMD

COMMON CHALLENGES, BETTER SOLUTIONS

BISCO's commitment to creating high-quality restorative materials is trumped only by its commitment to providing the dentists with products that solve common clinical challenges.

Rather than overcomplicate the process and increase the potential for negative outcomes, look for science-backed solutions that make it simple to perform your best dentistry, without adding to your costs or chair time.

In this guide, we'll review three common restorative challenges and the science behind simple, proven solutions.

scan for
eBook



LET'S TALK DENTISTRY

Hosted by Dr. Rolando Nuñez, *Bonding and Beer* is a dental podcast that's focused on learning, bonding, entertainment, and of course beer!

Learn how to avoid post-op sensitivity, become an expert when it comes to zirconia, stay up to date with trendy topics like immediate dentin sealing, and so much more!

Available on YouTube and your favorite podcast platform.

cheers!

scan to
tune in



All-Bond Universal®

Light-Cured Dental Adhesive

All-Bond Universal is the culmination of over 30 years of adhesive research at BISCO. It is compatible with all light-, self-, and dual-cured resin composite and cement materials for all direct and indirect procedures.



Versatile

Offers the flexibility for total-, self-, or selective-etch procedures



MDP

Contains MDP for enhanced durability



High Shear Bond Strengths

High shear bond strength to all substrates



Low Film Thickness

Less than 10 microns



Single-Bottle System

Other adhesives may need more than one bottle for indirect restorations, but with All-Bond Universal, NO activator is required



Total "Universality"

Compatible with all light-, self- and dual-cured resin composite and cement materials for all direct and indirect procedures

Dentistry courtesy of Tyler Lasseigne, DDS, CDT



1. Apply Z-Prime Plus



2. Apply All-Bond Universal



3. Apply Duo-Link Universal

learn more about all-bond universal



ORDER INFO

Bottle

All-Bond Universal Standard Kit

B-7202K

All-Bond Universal (6ml)

B-7202P

Unit-Dose Package

All-Bond Universal Unit-Dose (100pk)

B-73100K

*Universality: The powerful feeling of the entire universe in one single bottle.





Quantium™ Universal Composite

Quantium is a light-cured, radiopaque, universal composite that can be applied as a single shade or layered with multiple shades, seamlessly blending with the natural tooth structure. It combines superior levels of handling and placement ability with exceptional strength to create highly functional and esthetically appealing composite restorations in both the anterior and posterior.



Durable Restorations

High strength, wear resistance, and low shrinkage create durable restorations



High Radiopacity

Easy identification on radiographs aiding in post-treatment evaluation



Low Shrinkage

Features low volumetric shrinkage, which minimizes microleakage and ensures marginal adaptation



Easy to Handle

Smooth delivery and non-sticky handling



Excellent Esthetics

Easily polished and stain resistant to create esthetic results that maintain their appearance over time

Dentistry courtesy of David Santana, DDS



1. Pre-op case of old amalgam restoration

2. The preparation was cleaned with a slurry of pumice and water, rinsed and dried

3. TheraBase was applied to the dentin surface of the prepared cavity and light-cured for 20 seconds.

4. Select HV Etch w/BAC was used in a selective-etch bonding technique

5. All-Bond Universal was applied, following manufacturer's instructions

6. Quantum A2 Body and Enamel were used in a layering technique

7. Final restoration

SYRINGE ORDER INFO

Quantium Syringe Intro Kit

H-1000K

Syringes: 1 Syringe Quantum (4g)

Quantium Syringe A1 body

H-100A1P

Quantium Syringe A1 Enamel

H-110A1P

Quantium Syringe A2 body

H-100A2P

Quantium Syringe A2 Enamel

H-110A2P

Quantium Syringe A3 body

H-100A3P

Quantium Syringe A3 Enamel

H-110A3P

Quantium Syringe A3.5 body

H-100A35P

Quantium Syringe A3.5 Enamel

H-110A35P

Quantium Syringe B1 body

H-100B1P

Quantium Syringe B1 Enamel

H-110B1P

Quantium Syringe B2 body

H-100B1P

Quantium Syringe B2 Enamel

H-110B2P

Quantium Syringe Bleach

H-131BLCP

Quantium Syringe Incisal

H-121ICSP

learn more
about Quantum

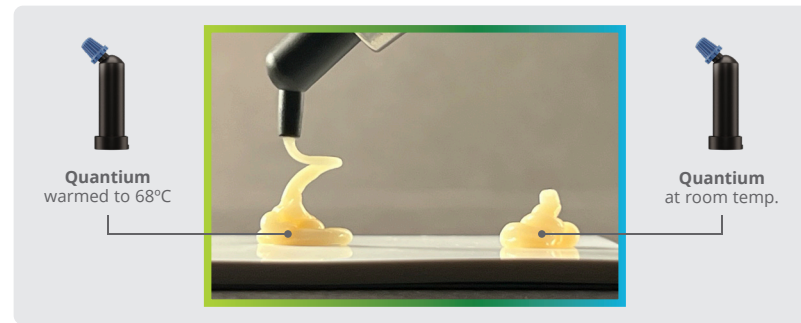


Quantium™ Unit Dose

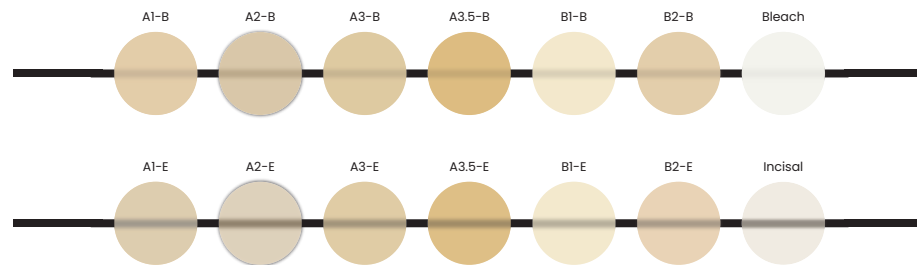
Universal Composite

At room temperature, Quantum is more packable and does not stick to instruments. Warming composite materials enhances flowability, which may improve marginal adaptation, reduce microleakage, and increase conversion rates.¹

For a more flowable experience, Quantum unit doses can be warmed up to 68°C (154°F) for up to an hour without compromising the physical properties of the material.



Quantium makes shade selection simple with a broad range of options designed to match the VITA®+ Classical Shade Guide, reducing guesswork and helping you achieve natural-looking results.



+ VITA is a registered trademark of VITA ZAHNFABRIK H. Rauter GmbH & Co.

1. Baroudi, K., Bayne, S. C., Deb, S., Demarco, F. F., Eliades, G. C., Eltahlah, D., Frões-Salgado, N. R., Opdam, N. J. M., Penn, R. W., Peutzfeldt, A., Sarrett, D. C., Trujillo, M., Yang, J., Abdulmajeed, A. A., & Brady, L. A. (2023, May 20). Prewarming effect on adaptation, porosities, and strength of a composite resin. *Journal of the Mechanical Behavior of Biomedical Materials*. <https://www.sciencedirect.com/science/article/abs/pii/S1751616123002667#preview-section-cited-by>

UNIT DOSE ORDER INFO

Quantium Unit Dose Intro Kit H-10100K

Unit Dose: 20 Quantum Unit-Dose Tips (0.25g ea.)

Quantium Unit Dose A1 body	H-1011A1P	Quantium Unit Dose A1 Enamel	H-1111A1P
Quantium Unit Dose A2 body	H-1011A2P	Quantium Unit Dose A2 Enamel	H-1111A2P
Quantium Unit Dose A3 body	H-1011A3P	Quantium Unit Dose A3 Enamel	H-1111A3P
Quantium Unit Dose A3.5 body	H-1011A35P	Quantium Unit Dose A3.5 Enamel	H-1111A35P
Quantium Unit Dose B1 body	H-1011B1P	Quantium Unit Dose B1 Enamel	H-1111B1P
Quantium Unit Dose B2 body	H-1011B1P	Quantium Unit Dose B2 Enamel	H-1111B2P
Quantium Unit Dose Bleach	H-1311BLCP	Quantium Unit Dose Incisal	H-1201ICSP



Duo-Link Universal™ Resin Luting Cement

Duo-Link Universal is specifically formulated for cementation of ALL* indirect restorations. The adhesive resin cement is intended for use with adhesives designed for compatibility with all dental materials, including all BISCO adhesives.



Easy Cleanup

Formulated to allow for quick and easy removal of excess cement



Easy to Use

Auto-mix, dual-syringe provides a consistent mix and easy placement



Radiopaque

Visible on radiograph to easily distinguish from caries



CAD/CAM Restorations

Ideal for all chairside and lab-fabricated restorations



High Degree of Conversion

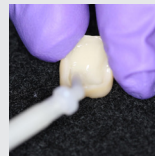
In both light- and self-cured modes ensures a strong, long-lasting restoration



Universal For All Cementation Procedures*

Crowns, bridges (fixed prosthesis), inlays, onlays, and posts/dowels, fabricated from metal, composite, porcelain, ceramic, zirconia, alumina, CAD/CAM restorations, etc.

Dentistry courtesy of Darren D. Simpson, DDS



1. Duo-Link Universal dispensed in the crown



2. All-Bond Universal applied, air dried, and light cured



3. Restoration seated. Excess cement removed



4. Final restoration

learn more about duo-link universal



ORDER INFO

System Kit with All-Bond Universal	A-19620K
Universal Dual-Syringe (8g)	A-19030P
Milky White Dual-Syringe (8g)	A-197MWP
Accessories	
Dual-Syringe Mixing & Intraoral Tips (30)	X-81257P
Dual-Syringe Mixing & Root Canal Tips (30)	X-81267P

* It is recommended to use BISCO's CHOICE™ 2 for veneer cementation.





Choice™ 2

Veneer Cement

Choice 2 is a shade stable, light-cured luting cement formulated for the cementation of porcelain, lithium disilicate, zirconia, and composite veneers.



Shade Stability

Specifically formulated to resist shade shift over time



Compatibility

Compatible with all ideal veneer substrates including porcelain, lithium disilicate (e.max*), and zirconia



Eight Esthetic Shades

Offered in several VITA®† and value-based shade options for every clinical situation.



Easy Cleanup

Specifically formulated to allow for quick and easy removal of excess cement



Low Film Thickness

Ensures veneer restorations are completely seated

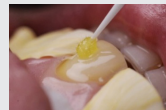
learn more about choice 2



Dentistry courtesy of Dr. Andres Ponce, DDS



1. Etch the preparation with Uni-Etch 32% w/BAC and rinse thoroughly with water.



2. Apply two separate coats of All-Bond Universal, scrubbing the preparation for 10-15 seconds with a microbrush. Do not light cure between coats.



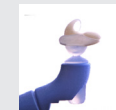
3. Etch the internal surface of the lithium disilicate veneer with 9.5% Porcelain Etchant and allow to dwell for 15 seconds.



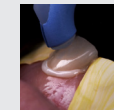
4. Apply Bis-Silane to the internal surface of the veneer and allow to dwell for 30 seconds. Rinse and Dry.



Optional: Apply a thin layer of Porcelain Bonding Resin to the internal surface of the veneer. Do not light cure.



5. Apply the selected shade of Choice 2 to the internal surface of the veneer.



6. Seat the final restoration and light cure for 40 seconds.



Before



After

ORDER INFO

Choice 2 Try-In Paste Kit	C-39011K	Choice 2 Refill Package (4.5g)	
Choice 2 Starter Kit with All-Bond Universal	C-39010K	A1	C-411A1P Translucent C-411A1TRP
Choice 2 Starter Kit with All-Bond 3	C-3900K	A2	C-411A2P Milky Bright C-411MBP
Choice 2 Try-In Paste Refill Package (2g)		A3	C-411A3P Milky Opaque C-411MOP
A1	C-412A1P	B1	C-411B1P Universal Opaque C-411OPP
A2	C-412A2P		
A3	C-412A3P		
B1	C-412B1P		
		Accessories	
		22G Blue Tips 15-pk	X-80610N

* IPS e.max is a registered trademark of IVOCCLAR VIVADENT, Inc.
 † VITA is a registered trademark of VITA ZAHNFABRIK H. Rauter GmbH & Co. KG. Germany.



TheraCal LC®

Resin-Modified Calcium Silicate Pulp Protectant/Liner

TheraCal LC is a light-cured resin modified calcium silicate ideal for direct and indirect pulp capping and as a protective liner.



Calcium Release*

Stimulates hydroxyapatite formation^{1,2} and secondary dentin bridge formation^{2,3}



Radiopaque

Visible on radiograph to easily distinguish from caries



Moisture Tolerant

Has low solubility and will not wash out over time



Alkaline pH

Alkaline pH promotes pulp vitality³



Insulates Pulp

Forms a protective barrier that insulates the pulp^{4,5}

Dentistry courtesy of Ross Nash, DDS



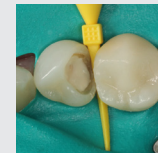
1. Distal-occlusal caries present on an asymptomatic mandibular first premolar



2. Incomplete excavation of caries leaving affected dentin without exposing the pulp



3. Placement of TheraCal LC on moist dentin



4. Place 1 mm of TheraCal LC and light cure for 20 seconds

learn more about theracal lc



ORDER INFO

TheraCal LC 4-Syringe Pack
TheraCal LC Syringe (1g)

H-33014P
H-3301P

Accessories
22G black Tips 50-pk

X-80621N

* BISCO has, on file, the calcium release data for TheraCal LC

1. Gandolfi MG, Siboni F, Prati C. Chemical-physical properties of TheraCal, a novel light-curable MTA-like material for pulp capping. International Endodontic Journal. 2012 Jun;45(6):571-9.

2. ADA definitions for direct and indirect pulp capping at: www.ada.org/en/publications/cdt/glossary-of-dental-clinical-and-administrative-ter

3. T. Okabe, M. Sakamoto, H. Takeuchi, K. Matsushima. Effects of pH on Mineralization Ability of Human Dental Pulp Cells. Journal of Endodontics. Volume 32, Number 3, March 2006.

4. Sangwan P; Sangwan A; Duhan J; Rohilla A. Tertiary dentinogenesis with calcium hydroxide: a review of proposed mechanisms. Int Endod J. 2013; 46(1):3-19

5. Selcuk SAVAS, Murat S. BOTSALI, Ebru KUCUKYILMAZ, Tugrul SARI. Evaluation of temperature changes in the pulp chamber during polymerization of light-cured pulp-capping materials by using a VALO LED light curing unit at different curing distances. Dent Mater J. 2014;33(6):764-9.





TheraCal PT®

Dual-Cured Resin-Modified Calcium Silicate Pulpotomy Treatment

TheraCal PT is a biocompatible, dual-cured, resin-modified calcium silicate designed for pulpotomy treatment. TheraCal PT maintains tooth vitality by performing as a barrier and protectant of the dental pulpal complex.



Calcium Release
Unique hydrophilic matrix facilitates calcium release



Easy Syringe Application
Manual mixing is not required, the dispensing tip creates a uniform mix allowing for direct placement



Dual-Cured
One-layer confidence



Radiopaque
Visible on radiograph to easily distinguish from caries



Alkaline pH
Alkaline pH promotes pulp vitality¹

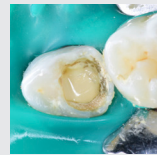


Moisture Tolerant
Low water solubility

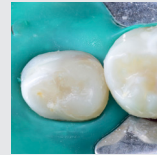
Dentistry courtesy of Juan Carlos Hernández Cabanillas, DDS



1. Perform pulpotomy treatment and achieve hemostasis



2. Place TheraCal PT directly in the pulp chamber, and ensure good adaptation to the cavity walls and margins



3. After light curing TheraCal PT for 10 seconds, place desired adhesive, base, and/or restoration following manufacturer's directions

learn more about theracal pt



ORDER INFO

Theracal PT Dual-Syringe (4g) H-34110P

Accessories

Auto-Mix Cannula Tips 30-pk X-81270P

1. T. Okabe, M. Sakamoto, H. Takeuchi, K. Matsushima. Effects of pH on Mineralization Ability of Human Dental Pulp Cells. Journal of Endodontics. Volume 32, Number 3, March 2006.





TheraCem® Self-Adhesive Resin Cement

TheraCem is a dual-cured, calcium- and fluoride-releasing, self-adhesive resin cement indicated for luting crowns, bridges, inlays, onlays and posts (prefabricated metal/non-metal/fiber posts).



Calcium and Fluoride Release

Offers continuous calcium and fluoride release*



Radiopaque

Visible on radiograph to easily distinguish from caries



Alkaline pH

Transitions from acidic to alkaline pH in minutes*



Easy Cleanup

Specially formulated to allow for quick and easy cleanup



High Degree of Conversion

A high degree of conversion ensures a higher physical strength



MDP

Contains MDP offering a strong bond to zirconia, metal, and alumina substrates with no priming or etching required

Dentistry courtesy of Joseph Kim DDS, JD, FAGD, FICOI



1. Prepare tooth



2. Seat restoration with TheraCem



3. Remove excess cement



4. Inspect margins

learn more about
theracem



ORDER INFO

Natural Dual-Syringe (8g)

D-46311P

Accessories

Dual-Syringe Mixing & Intraoral Tips (30)

X-81257P

Dual-Syringe Mixing & Root Cannal Tips (30)

X-81267P

* Data on file. BISCO, Inc.





TheraBase®

Self-Adhesive Calcium Releasing Base/Liner

TheraBase is a dual-cure, calcium and fluoride-releasing, self-adhesive base/liner. It is the ideal dual-cured material that will polymerize even in deep restorations where light cannot reach.



Calcium and Fluoride Release

Offers continuous calcium and fluoride release*



High Flexual Strength

Stronger and more fracture resistant



High Compressive Strength

Absorbs shock and stress from occlusal forces without fracturing



Radiopaque

Visible on radiograph to easily distinguish from caries



Alkaline pH

Generates an alkaline pH in minutes*, which promotes pulp vitality¹



High Degree of Conversion

Ensures enhanced physical properties

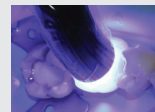
Dentistry courtesy of Dr. Rual Euan, DDS



1. After cavity preparation, all water was removed using a stream of air, leaving the surface visibly moist. TheraCal LC was applied on the small pulp exposure and light cured for 20 seconds



2. TheraBase was applied to the dentin surface of the prepared cavity directly from the dispensing syringe



3. TheraBase was light cured for 20 seconds. If desired, TheraBase can be allowed to self cure for 4 minutes



4. A selective-etch bonding technique was used to condition the surface of the preparation. Any bonding technique can be applied



5. All-Bond Universal was applied following manufacturer's instructions



6. Restorations were filled with a light-cure composite material following manufacturer's instructions

learn more about therabase



ORDER INFO

TheraBase Single Syringe Pack H-35001P

Accessories

Auto-Mix Cannula Tips 30-pk X-81270P

* Data on file. BISCO, Inc.

1. T. Okabe, M. Sakamoto, H. Takeuchi, K. Matsushima. Effects of pH on Mineralization Ability of Human Dental Pulp Cells. Journal of Endodontics. Volume 32, Number 3, March 2006.





Z-Prime™ Plus

Zirconia - Alumina - Metal Primer

Z-Prime Plus is a one-bottle primer used to enhance adhesion between indirect restorative materials and composite resin cements.



High Bond Strength

To zirconia, alumina, and metal restorations



Compatibility

Compatible with light-cured and dual-cured resin luting cements



Single Bottle

Convenient single-bottle delivery offers ease of dispensing



Versatile

Can be used with all metal and metal-oxide substrates



Enhances Bond Strength

Significantly enhances bond strengths of other resin cements*



MDP

Contains MDP, allowing for a strong bond to zirconia, metal, and alumina substrates

ORDER INFO

- 1 Bottle Z-Prime Plus (2ml)
- 1 Bottle Z-Prime Plus (4ml)

- B-6002P
- B-6001P

* Data on file. BISCO, Inc.

learn more about
z-prime plus





ZirClean® Restoration Cleaner

ZirClean is an extraoral cleaning agent designed for the non-abrasive cleaning of the bonding surfaces of zirconia, ceramic and metal restorations, after intraoral try-in.



Easy to Use

Syringe delivery system offers improved ease of use



Easy Clean up

Easy cleanup of the material



Contaminant Remover

Contaminants such as saliva can be removed to help achieve better bond strengths after try-in*



Reliable Results

Helps to achieve reliable cementation results with zirconia restorations after intraoral try-in*

ORDER INFO

1 Syringe ZirClean (5g)

B-7351P

Accessories
22G Black Tips 15-pk

X-80622N

learn more about
zirclean



* As compared to untreated samples.



Core-Flo™ DC & Core-Flo™ DC Lite

Dual-Cured Core Build-up Materials

Core-Flo DC and Core-Flo DC Lite are dual-cured, core products that are ideal for core build-ups, post cementation and as a dentin replacement material.



High Compressive Strength

Provides high compressive strength in light cure and self cure modes



High Flexual Strength

Offers high flexual strength in light-cure and self-cure modes



Radiopaque

Easy to identify on radiographs for quick and effective diagnosis



Cuts Like Dentin

Allows for easy preparation



Stackable (Core-Flo DC)

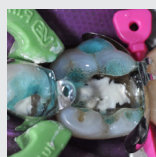
Optimal handling when building up core



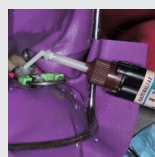
Self-Leveling (Core-Flo DC Lite)

Allows for excellent adaption resulting in gap-free margins

Dentistry courtesy of Ross Nash, DDS, FAACD



1. Enamel etched with Select HV Etch



2. Core-Flo DC applied after use of Universal Primer™



3. Core-Flo DC placed

learn more about Core-flo dc & Core-flo dc lite



ORDER INFO

Core-Flo DC Lite
System Kit with Universal Primer
Natural/A1 Dual-Syringe (8g)
Opaque White Dual-Syringe (8g)

AB-17410K
A-17801P
A-17803P

Accessories
Dispenser (Required for Core-Flo DC)
Root Canal Tips 30-pk
Intraoral Mixing Tips 30-pk

L-22020P
X-81267P
X-81257P

Core-Flo DC
Natural/A1 Dual-Syringe (8g)
Opaque White Dual-Syringe (8g)

A-23011P
A-23012P





Select HV® Etch w/BAC & Uni-Etch® w/BAC

Phosphoric Acid Etchants with Benzalkonium Chloride (BAC)

Select HV Etch w/BAC is a 35% high-viscosity phosphoric acid etchant with BAC. It is specifically formulated for pin-point placement to etch enamel when using an adhesive in selective-etch mode.

Uni-Etch w/BAC is a 32% semi-gel phosphoric acid etchant with BAC. It is specifically formulated to be easily applied to larger surface areas and to be rinsed cleanly, leaving no residue. It is the ideal etchant to use in total-etch mode.



Blue Color

Easy visualization and contrast



Unparalleled Bond

Creates microretentive surfaces that are necessary for successful bonding- Published research proves that BISCO etchants produce higher bond strengths to (wet or dry) dentin¹ and enamel.



Easy Cleanup

Rinses away cleanly and quickly leaving no residue to interfere with bonding

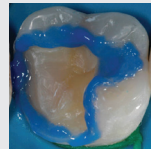


Contains BAC

An antimicrobial agent. In-vitro research shows it is effective against both *Actinomyces viscosus* and *Streptococcus mutans**^{2,3,4}

*NOTE: Inclusion of BAC has not been shown to correlate with a reduction in secondary decay in patients. In vivo clinical studies to evaluate the effects of BAC on oral bacteria or caries have not been performed.

Dentistry courtesy of Michael Morgan, DDS



Select HV Etch w/BAC demonstrating pin-point placement on enamel

learn more about etchants



ORDER INFO

Select HV Etch w/BAC (35%)
30ml Bulk Syringe Kit
Bulk Syringe Refill (30ml)
4 Syringe Package (5g ea.)

E-59200K
E-59160P
E-59110P

Uni-Etch w/BAC (32%)
Bulk Bottle (30g)
Bulk Syringe Refill (30ml)
4 Syringe Package (5g ea.)

E-5637EB
E-56621P
E-5502EBM

Accessories

Select HV Etch Empty Syringes w/ Tips 30-pk
22G Blue Tips 50-pk

X-80580P
X-80608N

Accessories

Uni-Etch Empty Syringes w/Tips 30-pk
25G Blue Tips 125-pk

X-80582P
X-80611N

1. Kanca, J.J. "Etchant composition and bond strength to dentin". Am J Dent 1993;6:162-164
2. M.Sc.Dt. Emre ÖZEL, Dr. Haktan YURDAGÜVEN, Yrd.Doç.Dr. Esra CAN SAY, Prof.Dr. Sesin KOCAGÖZ, Evaluation of the Antibacterial Activity of Disinfectant Solutions with Phosphoric Acids Against Streptococcus Mutans. Journal of Hacettepe Faculty of Dentistry, Volume: 29, Issue 4, Page: 8-14, 2005
3. M. TURKUN1, Z. ERGUCU, L.S. TURKUN, E.U. CELİK, and M. ATES, Is Phosphoric Acid Sufficiently Antibacterial? J Dent Res 85 (Spec Iss B):abstract number 1605, 2006 (www.dental-research.org).
4. Dr. Daniel Chan, University of Texas Health Science Center at San Antonio Dental School. Residual Effect of 1 and 2% Benzalkonium Chloride Incorporated into an Etchant on the Susceptibility of Actinomyces viscosus T14V. 1993



techniques

Self-Etch, Total-Etch, and Selective-Etch Bonding	Page 18
Pulp Exposures (Direct Pulp Capping)	Page 19
Deep Preparations (Indirect Pulp Capping)	Page 19
Sandwich Technique	Page 20
Pulpotomy	Page 20
Core Build-Ups	Page 21
Intraoral Repairs of Porcelain (PFM or PFZr)	Page 22
Conventional Cementation of Crowns (Retentive Preps)	Page 23
Bonded Cementation of Inlays/Onlays, Bridges, Crowns (Short/Tapered Preps)	Page 24
Veneer Cementation	Page 25
Direct and Indirect Tooth Preparation Treatment	Page 26

quick guides

Zirconia Bonding & Sandwich Technique	Page 27
Veneer Cementation & Cementation With a Bonding Agent	Page 28
Cementation Without a Bonding Agent & Post Cementation With Core Build-Up	Page 29

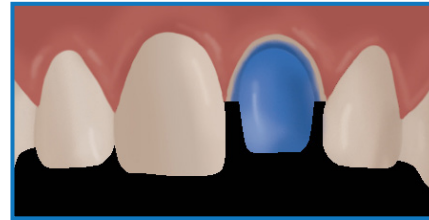


Self-Etch Technique



No phosphoric acid applied to the tooth structure.

Total-Etch Technique



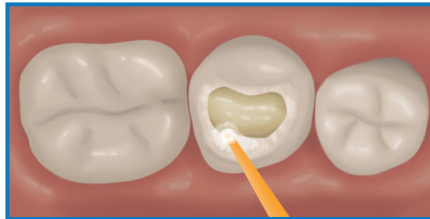
Phosphoric acid (such as Uni-Etch® w/ BAC) applied to both enamel and dentin surface.

Selective-Etch Technique

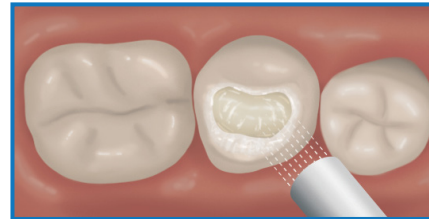


Phosphoric acid (such as Select HV® w/ BAC) applied to the enamel surface only.

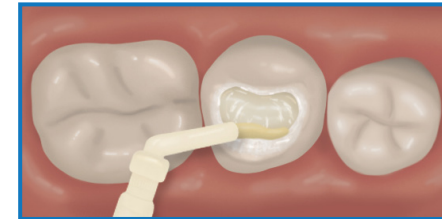
Bonding Technique* using All-Bond Universal®



1. Apply two separate coats of All-Bond Universal, scrubbing the preparation with a microbrush for 10-15 seconds per coat. Do not light cure between coats.



2. Evaporate solvent by thoroughly air-drying with an air syringe for at least 10 seconds; there should be no visible movement of the material. The surface should have a uniform glossy appearance; otherwise, repeat Step 1-2. Light cure for 10 seconds.



3. Continue with placement of the restorative material according to the manufacturer's instructions.

* Refer to instructions for complete details.

Pulp Exposures (Direct Pulp Capping)*

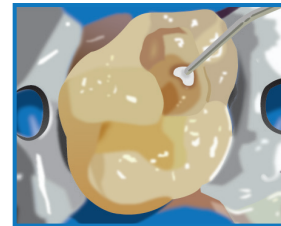
with TheraCal LC®



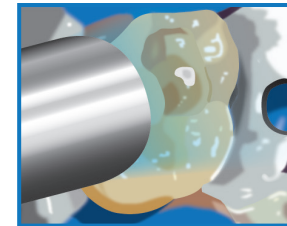
1. Under rubber dam isolation, complete cavity preparation.



2. Achieve hemostasis. Leave dentin visibly moist.



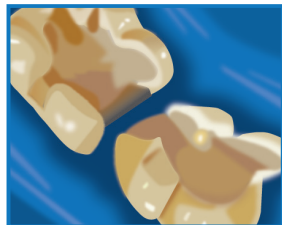
3. Apply TheraCal LC directly to the exposed pulp. Layer is not to exceed 1 mm in depth. Cover all the exposed areas and extend TheraCal LC at least 1 mm onto sound dentin surrounding the exposure.



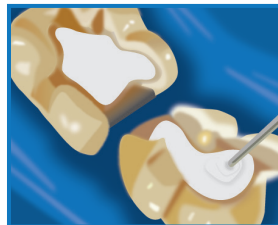
4. Light cure for 20 seconds. Place desired adhesive, base, and/or restoration following manufacturer's directions. Continue restoring tooth.

Deep Preparations (Indirect Pulp Capping)*

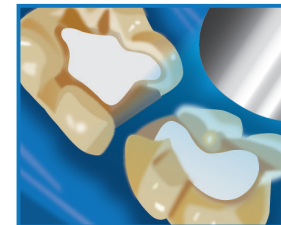
with TheraCal LC



1. Isolate the tooth and perform conventional cavity preparation. Remove all infected carious tooth structure. Leave dentin visibly moist.



2. Apply TheraCal LC directly to the cavity floor of the preparation. Layer is not to exceed 1 mm in depth. Manipulate into a smooth surface covering all deep dentin areas.



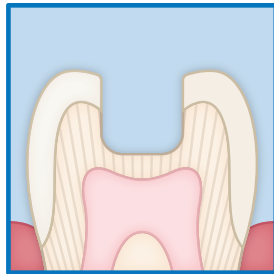
3. Light cure for 20 seconds. Place desired adhesive, base, and/or restoration following manufacturer's directions. Continue restoring tooth.



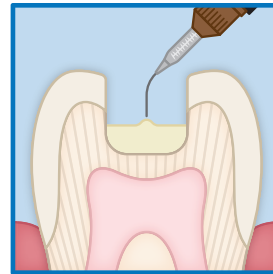
* Refer to instructions for complete details.

Sandwich Technique*

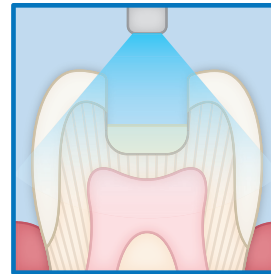
using TheraBase®



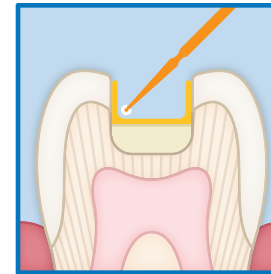
1. Prepare cavity. Clean the preparation with pumice and water. Rinse thoroughly and dry.



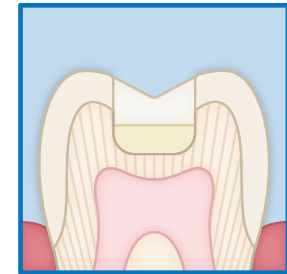
2. Apply TheraBase to the dentin surfaces of the prepared cavity directly from the syringe.



3. Light cure for 20 seconds or allow to self cure.



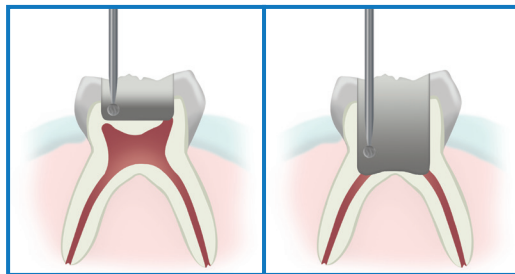
4. Proceed with bonding procedure, such as All-Bond Universal® following manufacturer's instructions.



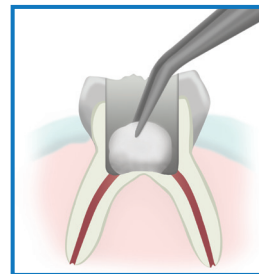
5. Restore with composite following manufacturer's instructions.

Pulpotomy Treatment*

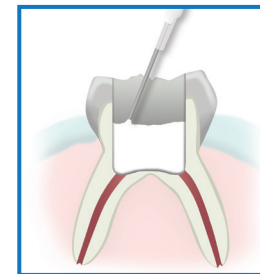
using TheraCal PT®



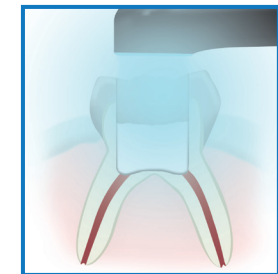
1. Perform pulpotomy treatment.



2. Achieve hemostasis.



3. Place TheraCal PT directly in the pulp chamber, and ensure good adaptation to the cavity walls and margins.

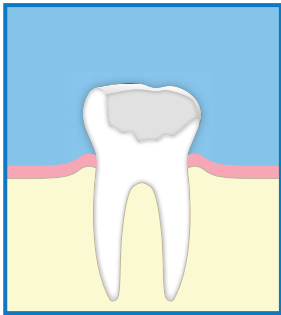


4. Light cure TheraCal PT for 10 seconds. Place desired adhesive, base, and/or restoration following manufacturer's directions for restoring tooth.

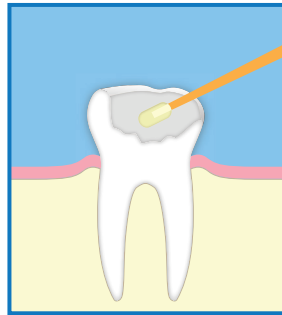
* Refer to instructions for complete details.

Core Build-ups*

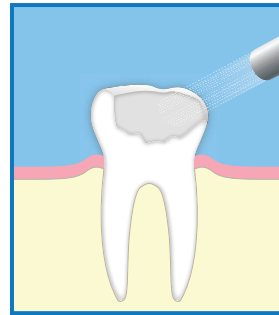
with Core-Flo™ DC or Core-Flo™ DC Lite



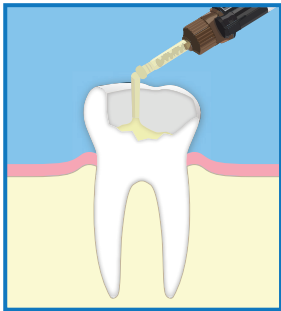
1. Isolate tooth and prepare accordingly. Rinse and dry.



2. Dispense 1-2 drops of Universal Primer™ parts A & B into a clean well. Apply two separate coats of Universal Primer parts A & B, scrubbing the preparation with a microbrush for 10-15 seconds per coat.



3. Evaporate excess solvent by thoroughly air-drying with an air syringe for at least 10 seconds; there should be no visible movement of the adhesive. The surface should have a uniform glossy appearance; otherwise, apply an additional coat of Universal Primer parts A & B and air dry.



4. Place the end of the intra-oral tip directly onto the preparation, and express Core-Flo DC or Core-Flo DC Lite.



5. Light cure the Core-Flo DC or Core-Flo DC Lite for 40 seconds and continue with final preparation.



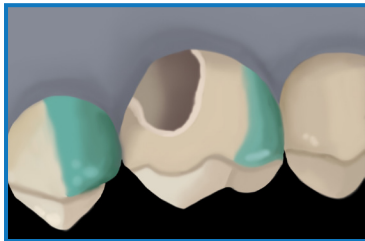
learn more about universal primer



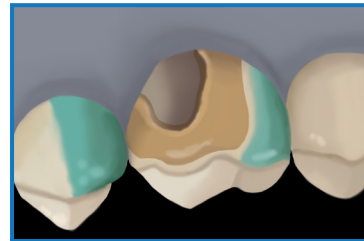
* Refer to instructions for complete details.

Intraoral Repairs of Porcelain (PFM, or PFZr)*

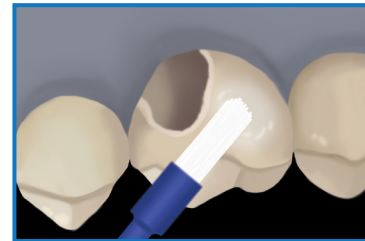
1. Isolate the area to be repaired. Remove the glaze and bevel (45 degrees) the porcelain around the area to be repaired. Sandblast or abrade with a coarse diamond bur. Rinse with water and air dry.



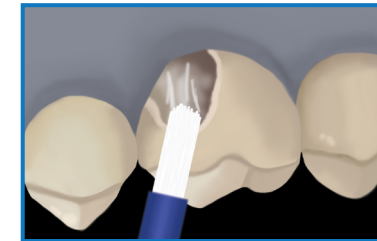
2. Place Barrier Gel on the gingival tissue and porcelain to protect areas where etching is not desired.



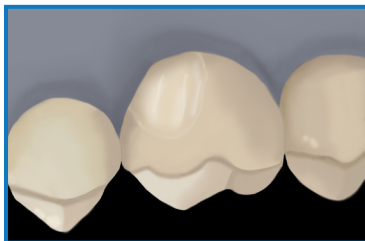
3. Apply 9.5% Porcelain Etchant to the dry porcelain surface for 90 seconds. Suction the etchant with high volume evacuation, then rinse with water and air dry. The etched porcelain should appear dull and frosty.



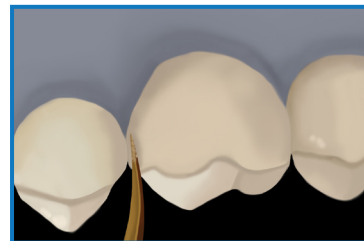
4. Apply 1 coat of silane (Porcelain Primer) to the etched porcelain and allow to dwell for 30 seconds. Dry with (warm) air syringe.



5. Apply 1 coat of Z-Prime™ Plus to the exposed metal/zirconia/alumina and dry with an air syringe for 3-5 seconds.



6. If metal masking is required, use Dual-Cured Opaquer Base and Catalyst, one drop of each, onto a mixing pad and mix with a brush tip. Apply a thin coat of the mixture only to the metal surface. Allow to self cure, or light cure for 5 seconds.



7. Apply a thin layer of Porcelain Bonding Resin to the repair site. Apply a hybrid composite (Quantium™) to replace fractured porcelain and light cure, finish/polish.

learn more about
the intraoral
repair kit

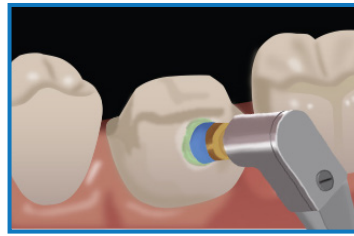


* Refer to instructions for complete details.

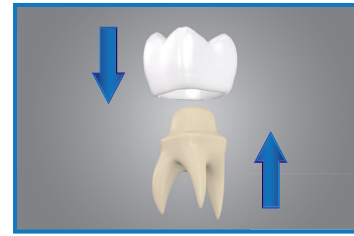
Conventional Cementation of Crowns (Retentive Preps)* using TheraCem®



1. Sandblast internal surface of restoration (unless restoration has previously been sandblasted).



2. Remove temporary restoration and clean prep with pumice and water slurry. Rinse thoroughly and dry.



3. Try-in (to check occlusion and fit). After try-in, thoroughly rinse the restoration with water spray and dry.



4. Outside of the mouth, cover all bonded surfaces of the restoration with a layer of ZirClean®. Allow 20 seconds for the cleaning action of ZirClean to take affect, then thoroughly rinse with water spray and dry.



5. Dispense TheraCem into the restoration. Seat the restoration with gentle passive pressure and remove any excess cement.

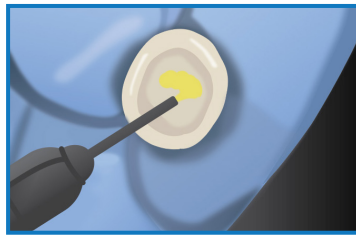
PRO TIP: To aid in the removal of excess cement, initially light cure the margins for 2-3 seconds.



6. Light cure for 20-30 seconds or allow to self cure.

* Refer to instructions for complete details.

Bonded Cementation of Inlay/Onlays, Bridges, Crowns (Short/Tapered Preps)* using Duo-Link Universal™

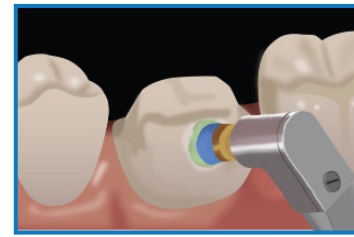


1a. Porcelain/Lithium Disilicate: Etch the internal surface of the restoration with hydrofluoric acid, such as 9.5% Porcelain Etchant, according to the manufacturers instructions.

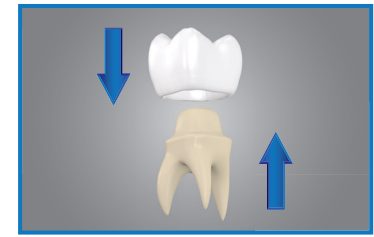
OR



1b. Metal/Zirconia/Indirect Composite: Sandblast internal surface of restoration, unless restoration has been previously sandblasted.



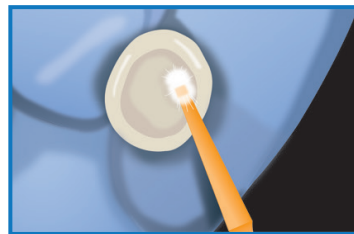
2. Remove temporary restoration and clean prep with pumice and water slurry. Rinse thoroughly and dry.



3. Try-in (to check occlusion and fit). After try-in, thoroughly rinse the restoration with water spray and dry.



4. Metal/Zirconia/Indirect Composite: Outside of the mouth, cover all bonded surfaces of the restoration with a layer of ZirClean®. Allow 20 seconds for the cleaning action of ZirClean to take affect, then thoroughly rinse with water spray and dry.

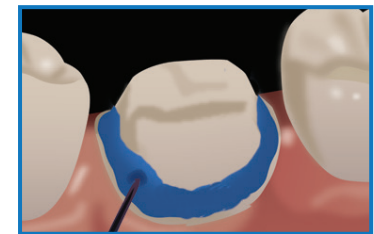


5a. Porcelain/Lithium Disilicate: Apply a thin coat of silane (Porcelain Primer) to the internal surface. Wait for 30 seconds, or dry with (warm) air.

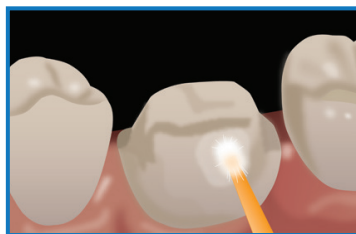
OR



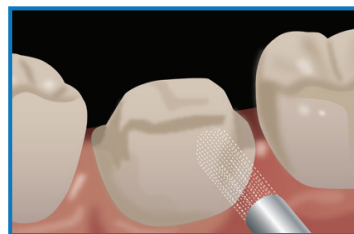
5b. Metal/Zirconia/Indirect Composite: Apply one coat of Z-Prime™ Plus to the internal surface of the restoration and air dry for 3-5 seconds.



6. If prep includes enamel, selectively etch enamel with Select HV® Etch w/BAC for 15 seconds, suction then rinse thoroughly.



7. Dispense Universal Primer™ and mix (or All-Bond Universal®) in a mixing well. Apply 2 separate coats, agitating each coat for 10-15 seconds.



8. Gently air dry until there is no visible movement of the adhesive. Then thoroughly air dry with greater air pressure. The surface should appear shiny, otherwise repeat step 7. Light cure for 10 seconds.**



9. Using a dual-cured resin cement (Duo-Link Universal), fill the internal surface of the restoration and/or the prep with the cement. Seat with gentle, passive pressure and remove excess cement while holding restoration in place. Allow the cement to self cure, or light cure each surface of the tooth for 40 seconds.

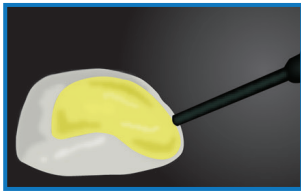


* Refer to instructions for complete details.

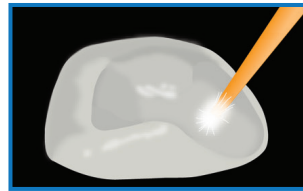
** Universal Primer does not require light cure.

Veneer Cementation*

using Choice™ 2



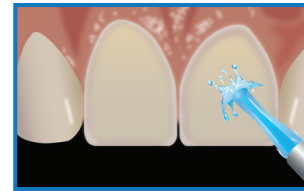
OR



1. Prepare the internal surface of the restoration as instructed by the laboratory:

a. Porcelain/Lithium Disilicate:
If needed, etch the veneer with hydrofluoric acid (4% Porcelain Etchant or 9.5% Porcelain Etchant) according to the manufacturer's instructions.

b. Apply a thin coat of silane (Porcelain Primer/Bis-Silane™) to the internal surface. Wait for 30 seconds, or dry with (warm) air.



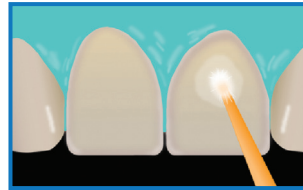
2. Remove the temporary restorations and clean the preparations (Cavity Cleanser™ and pumice slurry). Rinse thoroughly.



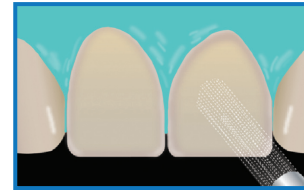
3. Try in the restorations using the corresponding shade of water-soluble try-in paste (Choice™ 2 Try-In Paste). Remove the veneers and either clean with etchant (Uni-Etch® w/BAC or Select HV® Etch w/BAC) and rinse thoroughly, or ultrasonicate in water or alcohol for 2-3 minutes. Dry the restorations.



4. Isolate. Etch preparations (Uni-Etch w/BAC or Select HV Etch w/BAC) for 15 seconds, rinse thoroughly.



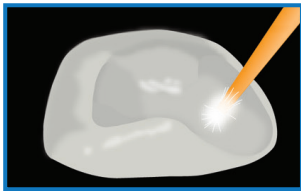
5. Dispense adhesive (All-Bond Universal®) in a mixing well. Apply 2 separate coats, agitating each coat for 10-15 seconds.



6. Gently air dry until there is no visible movement of the adhesive. Then thoroughly air dry with greater air pressure. The surface should appear shiny, otherwise apply additional coats.



7. Light cure for 10 seconds.



8. Apply a thin layer of HEMA-free resin (Porcelain Bonding Resin) to the internal surface of the veneer. Do NOT light cure.



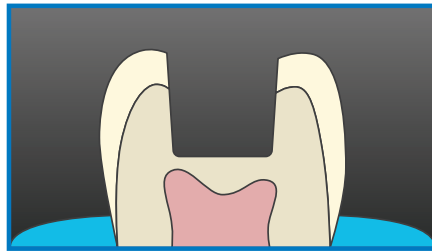
9. Using a light-cured resin cement (Choice 2), fill the internal surface of the restoration with the cement.



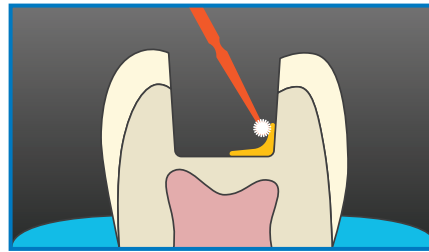
10. Seat with gentle, passive pressure and light cure for 2-3 seconds to tack the veneer into place. Remove excess cement, then light cure each veneer for 40 seconds.

* Refer to instructions for complete details.

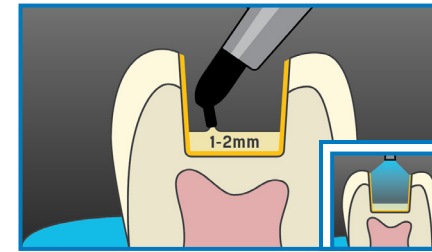
Direct Posterior Composite Restoration* using Quantum™



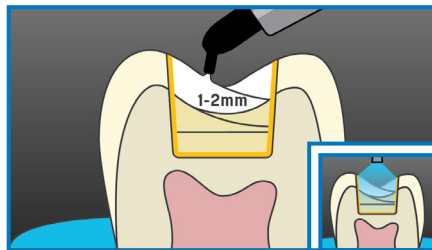
1. Select the desired Quantum shade prior to isolating and preparing the tooth. Clean, rinse and isolate.



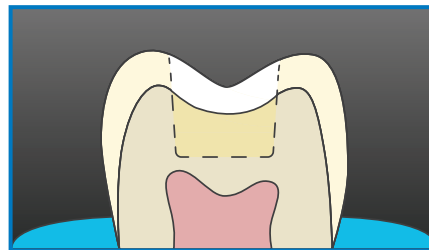
2. If needed, place a matrix, and apply an adhesive, such as All-Bond Universal®, following manufacturer's instructions.



3. Dispense desired amount of Quantum body shade onto a mixing pad by turning the syringe handle clockwise. If using unit dose tips, inject Quantum directly into preparation. Place Quantum in 1-2 mm increments into the cavity preparation up to the dentin enamel junction, leave space for a final enamel layer. Light-cure each increment with a curing light for 20 seconds.



4. Select the desired Quantum enamel shade (optional) for the last 1-2 mm increment of the restoration, apply, and light cure each increment for 20 seconds.



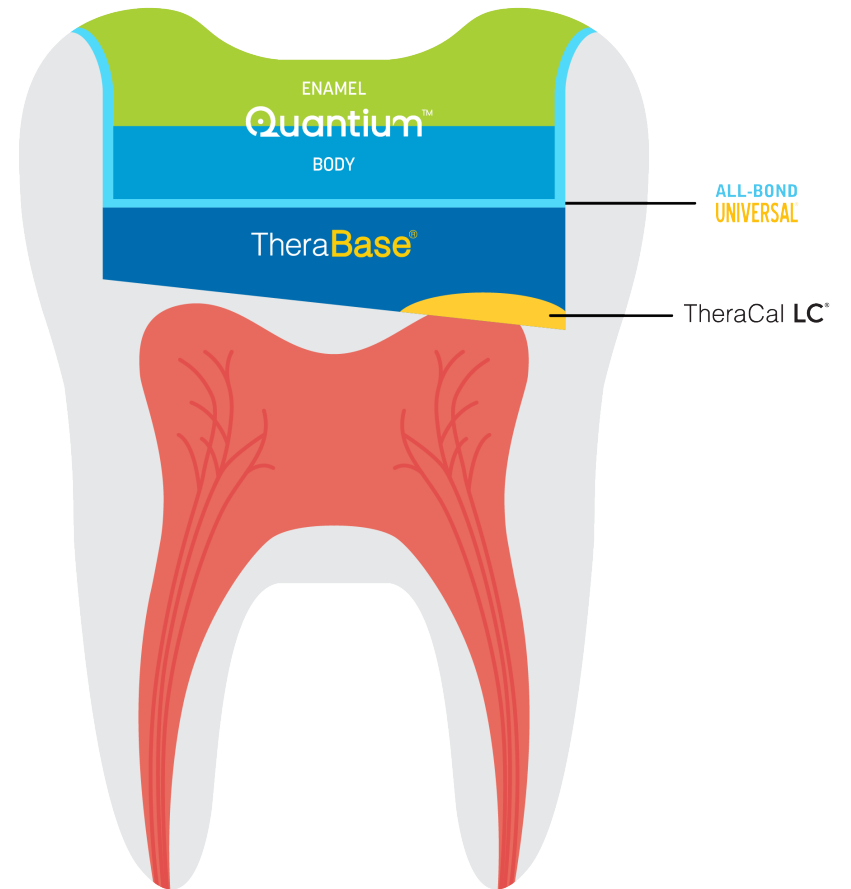
5. Check the occlusion, finish, and polish.



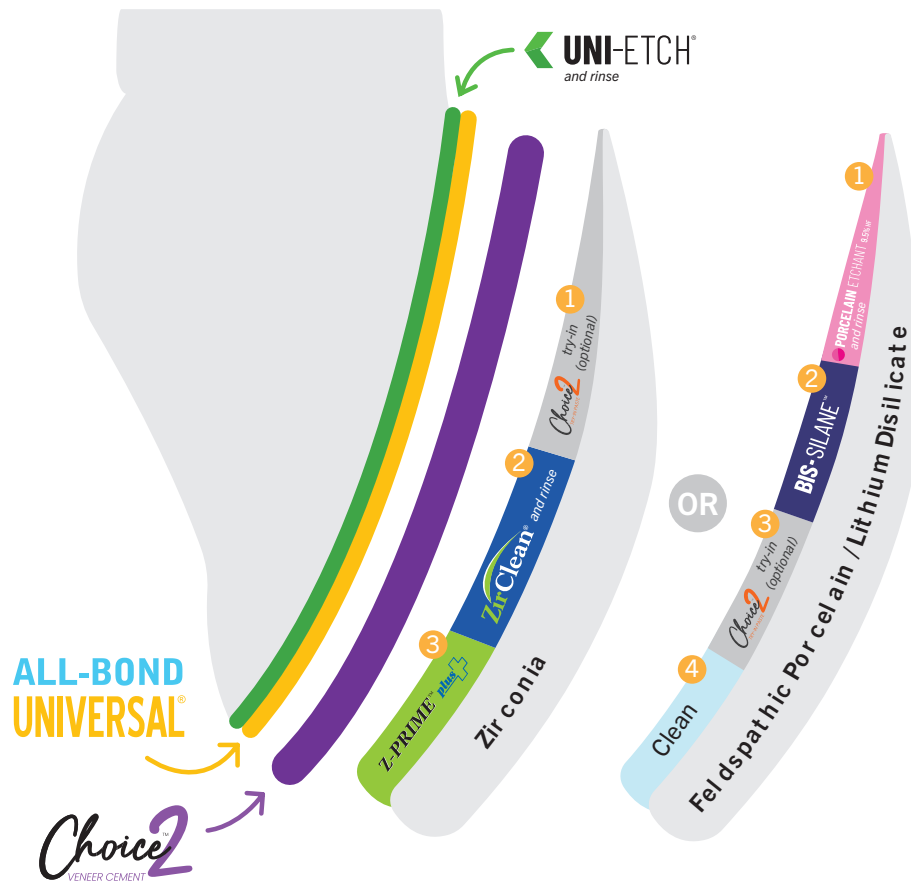
Zirconia Bonding



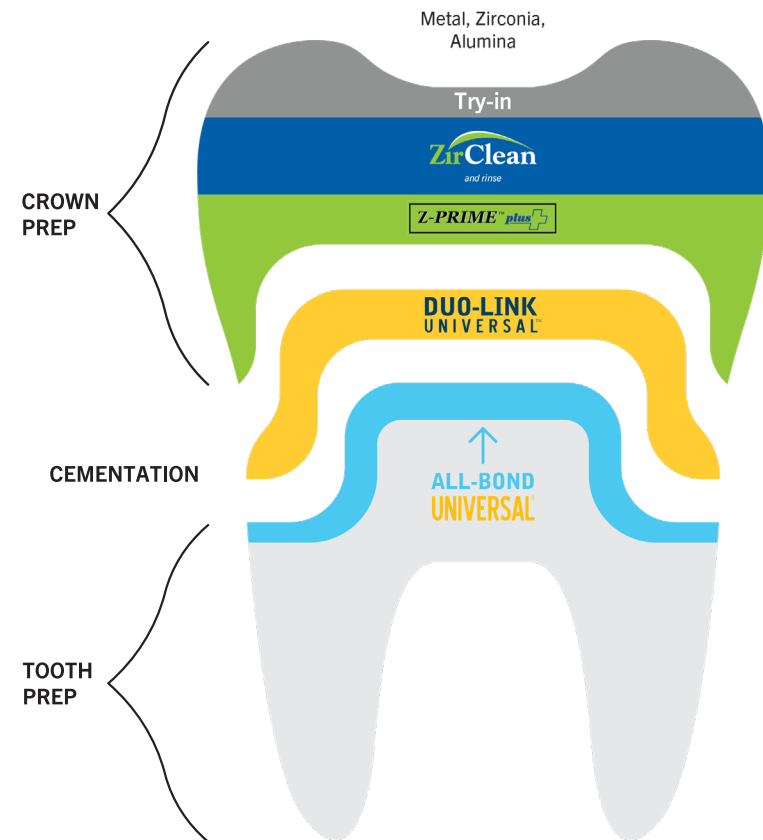
Sandwich Technique



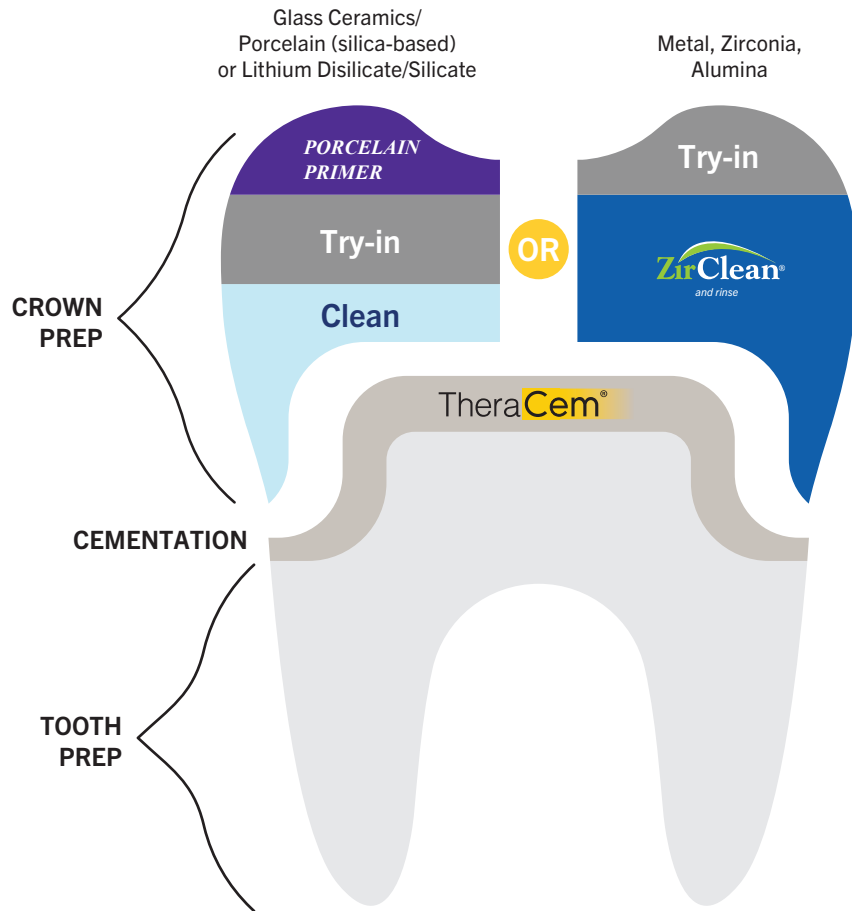
Veneer Cementation



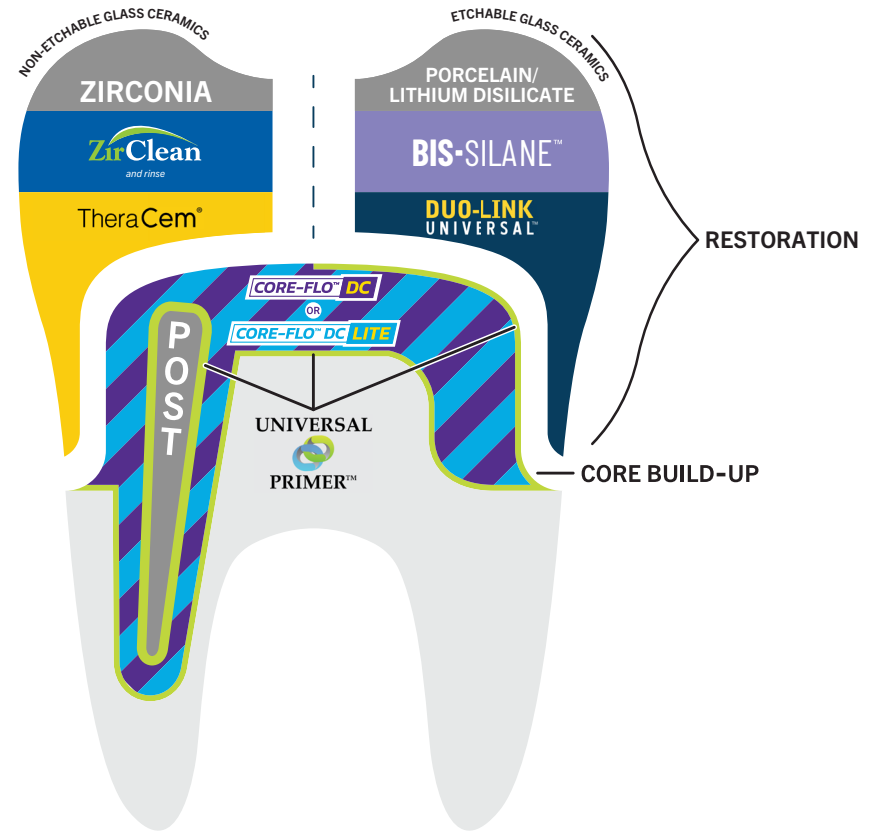
Cementation With a Bonding Agent



Cementation Without a Bonding Agent



Post Cementation With Core Build-up



LET THE REWARDS BEGIN!

At BISCO, we believe every purchase should count! That is why we are introducing BISCO's NEW Bonding Rewards Loyalty program, where it's never been easier or more fun to earn rewards! As a valued member, you'll enjoy a range of exclusive benefits designed to recognize and reward your continued loyalty.



scan to learn more



BISCO
BONDING
REWARDS

U.S. customers only.

BISCO's Direct-to-You Promise

Get the customer-driven products and services you need from the experts who make them. BISCO is a direct-to-you company, meaning we sell, ship, and serve our customers directly, and you can ONLY get BISCO products directly from us. This allows us to provide you with special advantages you can't get anywhere else. With BISCO, it's not just dental products; it's a whole lot more!



DIRECT PRODUCTION

BISCO controls every aspect of the manufacturing process to always deliver the best quality.



DIRECT CONNECTION

Your feedback guides our new offerings and continuous product improvements.



DIRECT ACCOUNTABILITY

If you're not satisfied for any reason, we'll give you a 100% refund.



DIRECT SERVICE

Speak with a BISCO expert and get real-time answers about accounts, products and inventory optimization.



DIRECT DELIVERY

Get fresh inventory straight to your door for the longest possible shelf life.



DIRECT SAVINGS

Quality, innovation and reduced inventory – without the distributor markup.



BISCO, Inc.
1100 W. Irving Park Rd.
Schaumburg, IL 60193, USA
1-800-247-3368
www.bisco.com



Exclusively distributed by Curion

curion.ca | EN: 1.800.667.8811 | FR: 1.800.211.1200

Rx Only