



## LM-Arte™ instruments for aesthetic restorations

LM-Arte™ is a range of innovative instruments for aesthetic restorations that is designed especially for composite layering. Each instrument is colour-coded and named after its main function, enabling you to administer easy, efficient and quick restorative treatments. The lightweight and ergonomic LM™ handle design, together with high-quality tip materials, provides excellent tactile sensitivity and easy handling for the best clinical results.

Reg. \$80.00

Please visit [curion.ca](http://curion.ca) to view current promotions.



**LM-Arte Applica**

LM46-49ES



**LM-Arte Applica Twist**

LM464-494ES



**LM-Arte Modella**

LM442-443ES



**LM-Arte Condensa**

LM488-489ES



**LM-Arte Misura**

LM496-497ES



**LM-Arte Posterior Misura**

LM498-499ES



**LM-Arte Cusp Misura**

LM468-469ES



**LM-Arte Fissura**

LM481-487ES



**LM-Arte Eccesso**

LM307-308ES



**LM-Arte Solo Anterior**

LM431-433ES



**LM-Arte Solo Posterior**

LM434-438ES



**LM-Arte Replica Posterior**

LM448-449ES



## New LM-Arte™ with LM Dark Diamond™ coating

LM Dark Diamond™ exclusive non-stick coated instruments are ideal for placing and contouring of composite resins. The dark color of the coating offers minimal reflections, and maximum contrast against composite. Hard and smooth surface allows for pleasant and precise restorative instrumentation protecting the tip from scratches and being easy to clean.

Reg. \$99.00

Please visit [curion.ca](http://curion.ca) to view current promotions.



### LM Dark Diamond™ offers unique benefits!

- Contemporary diamond-like carbon (DLC) coating reduces stickiness for smooth composite placement
- Hard surface protects the tip from scratches
- Smooth surface for easy cleaning
- Dark coating color for minimal reflections, and maximal contrast against fillings
- Ergonomic LM-ErgoSense



### LM-Arte™ Dark Diamond set

of LM-Arte instruments with exclusive non-stick LM Dark Diamond coating in LM-Servo 5 cassette includes Eccesso DD, Modella DD, Fissura DD, Applicata DD and Condensa DD instruments

LM6845ES





## Non-Stick Coated Instruments

LM Dark Diamond instruments with non-stick coating for easy placing and contouring of composite resins. The diamond-like coating reduces the stickiness and allows pleasant and precise restorative instrumentation.

Reg. \$88.00

Please visit [curion.ca](http://curion.ca) to view current promotions.

Scan QR Code



**Plastic Instrument - Mini Universal** LM444-445DDES  
 • For placing and contouring composite



**Burnisher-Plunger** LM471-473DDES  
 • For modeling composite, Ball-ended, 1.5-2.5 mm



**Plastic Instrument - Anterior** LM43-47DDES  
 • For placing, packing and contouring composite



**Packer-Modeller IO** LM482-483DDES  
 • For packing and modelling composite



**Plastic Instrument - Posterior** LM48-702DDES  
 • For placing, packing and contouring composite



**Modeller MH** LM708-709DDES  
 • For packing large approximal fillings



**Burnisher** LM31-32DDES  
 • For packing and modeling composite



**Modeller MH Mini** LM707-708DDES  
 • For packing small and medium approximal fillings



## LM Arte Gengiva Kit

Obtain the best clinical results while avoiding unnecessary injury to the gingiva.

- Strong, yet flexible plastic tips adapt tightly to the gingival margin with minimal trauma to soft tissue
- Protects soft tissues from burs and abrasive rubbers
- Allows finishing instruments to reach the margins of the restorations
- Minimizes potential for debonding
- Easy to modify/mold edges to better fit the tooth to be restored
- Disposable

**Kit includes:**

- LM-Gengiva Hand
- LM-Gingival Retractors (blue)
- LM-Multilever

**Reg. \$138.00**

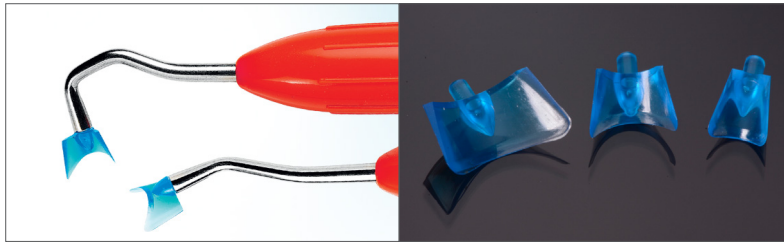
Please visit [curion.ca](http://curion.ca) to view current promotions.

Scan QR Code



### GENGIVA

The gingival retracting kit



Retraction can be traumatic for the gingiva when not done properly. The use of LM-Gingival Retractors with LM-Gengiva instrument has many advantages over the traditional rubber dam and retraction cords.

LM-Gingival Retractors - Assortment of three sizes (90 pcs, 30 pcs/size): S for incisors, M for premolars and XL for molars.



**Easy to customize**

Edges can easily be molded in order to better fit to the tooth to be restored.



**Better adaptation**

The plastic tips allow enough flexibility for more adaptation while pressured.



**Superior retraction and protection**

The retractor is optimally rigid to maximize retraction while protecting the soft tissue from burs and abrasive rubbers



**Improved reach to margins**

Allows finishing instruments to reach the margins of the restoration while minimizing soft tissue trauma