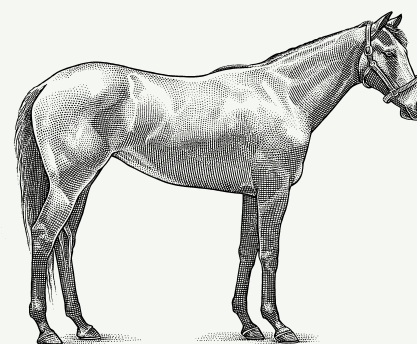
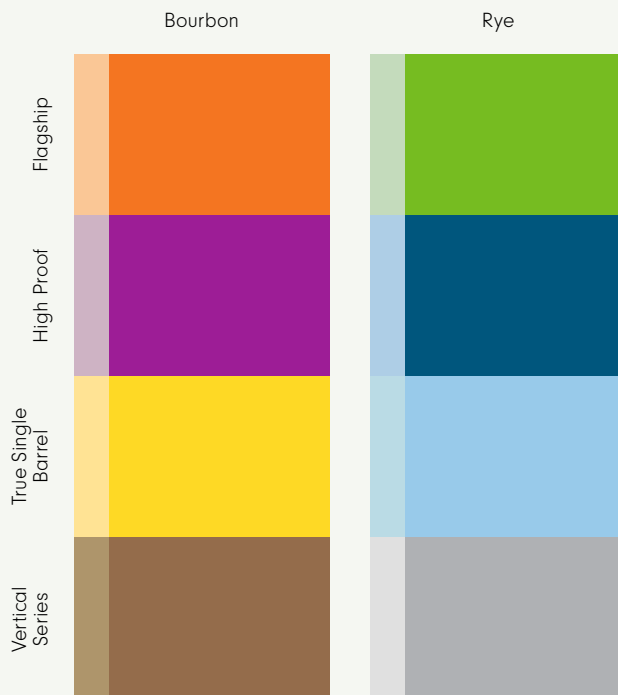
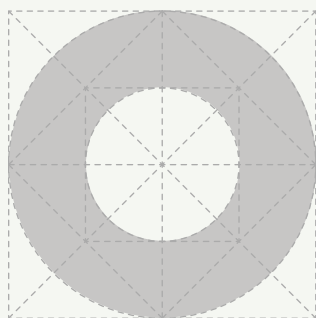
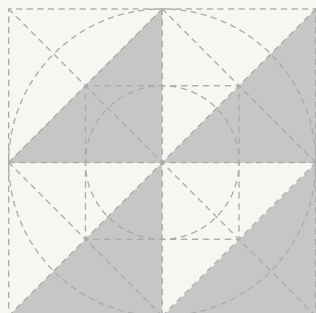




P I N H O O K

BOTTLE
ARCHITECTURE



The Geometry / Release Year

Each vintage has its own geometric shape, which appears on the label of every expression released that year.

The Colors / Style & Expression

Pinhook makes two styles of whiskey – bourbon and rye – in four different expressions of each. Every one of those eight total expressions has its own dedicated wax color, which always remains the same, year after year.

The Horses / Barrel Lot

The horse on Pinhook labels denote a lot of barrels from which that blend comes. Every year Pinhook selects two up-and-coming thoroughbreds with our partners at Bourbon Lane Stable one with a Bourbon name and one with a Rye name.