

DESIGN BY PIERRE CHARPIN

HAY

PC TABLE LAMP



HIGHLIGHTS

- Part of a progressive and technologically advanced lighting collection
- A family of refined pendants, task lights, table and portable lamps
- CE approved
- Designed for use with a replaceable standard retro fit LED dimmable bulb
- Touch step dimmer
- Table lamp suitable for both private and office environments
- Qualified for contract use

PC TABLE LAMP DESIGN BY PIERRE CHARPIN

Pierre Charpin's PC Table Lamps is a collection of refined freestanding tabletop lamps. The lamps are constructed in anodised aluminium, which makes the surface more resistant to corrosion. The light source is hidden from view by a removable polycarbonate moulded diffuser, creating both a soft directional downlight effect and determining the form of the lamp itself.

Trained as an artist, Pierre Charpin has devoted himself to furniture and object design since the early 1990s. His approach to design is strongly influenced by his artistic background. Pierre's research on form and colour characterise his work and can be seen in both, limited edition products and industrial products like the PC lamp. The use of a simple vocabulary and elementary forms is a constant aspect in his work, as well as the desire to offer sensual objects. Drawing, which he practices as a starting point for his designs, is an essential part of his creative process. Pierre Charpin's pieces have been included in exhibitions around the world and are held in many museum collections. He was elected Designer of the Year 2017 at Maison & Objet. He lives and works in Paris.



Pierre Charpin



PC Table Lamp | Aluminium anodised



PC Table Lamp | Soft black



PC Table Lamp | Soft black



PC Table Lamp | Soft black



PC Table Lamp | Aluminium anodised



PC Table Lamp | Soft black



MATERIALS

SHADE
Anodised spun aluminium shade

DIFFUSER
Injection moulded translucent polycarbonate diffuser

BASE
Anodised extruded aluminium base with a cast iron internal weight

CORD
Braided textile cord with PVC insulation. Please note that the cord is black for both colour options

PRODUCT INFORMATION

DESIGN YEAR
2019

COUNTRY OF ORIGIN
China

OPTIONS
Incl. UK Plug converter

COLOUR & FINISH

Please note that the colours are indicative

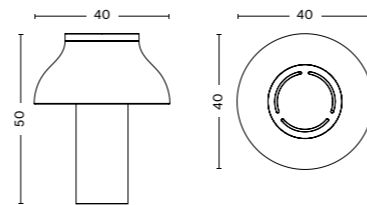


Soft black



Aluminium
Anodised

DIMENSIONS



PC TABLE LAMP
Diameter 40 cm
Height 50 cm
Weight 4,2 kg



TECHNICAL SPECIFICATION

RECOMMENDED LIGHT SOURCE

LED E27 (A19), 10-13W (max. 13W), 1000-1500lm, 2700-3000K warm white
Bulb not included. Globe style bulb is not recommended

DIMMABLE

Yes

POWER SUPPLY

220-240V AC at 50/60Hz
EU plug mounted

IP

20

CORD LENGTH

200 cm

SWITCH

Touch step dimmer (Integrated in the entire base)

TEST SPECIFICATION OUTPUTS

Photometrics and the test specification shown is taken using the recommended LED bulb fitted in the production luminaire

LUMEN (LM)

550lm

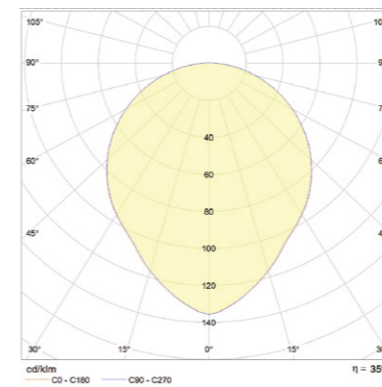
KELVIN (CCT)

2700K warm white

CRI (1-100)

80

PHOTOMETRICS



CERTIFICATES

ETL APPROVED

This product has been assessed and complies with the essential requirements of the certificate.

CE APPROVED

This product has been assessed and complies with the essential requirements of the relevant European directives.

LED   IP20  

Tested according to the following European EN IEC standards which relate specifically to electrical lighting products including.

- EN 55015:2013 (radio disturbance)
- EN 61547:2009 (EMC immunity)
- EN 61000-3-2:2014 (EMC compatibility)
- EN 61000-3-3:2013 (EMC compatibility)
- EN 60598-2-4:1997 (portable luminaires)
- EN 60598-1:2015 (general requirements)
- EN 62493:2010 (human exposure to EMC)

DOWNLOADS

Packshots and lifestyle photos, 2D / 3D files, care and maintenance, instructions, test certificates, product fact sheets, and product presentations are available in our Digital Library at hay.com.

[LINK TO DIGITAL LIBRARY](#)

