



INSTRUCTION MANUAL



CONTENTS

| | |
|---|---------------|
| 1 GENERAL | PAGE 2 |
| 2 SAFETY | PAGE 4 |
| 3 SPARE PARTS | PAGE 5 |
| 4 OPERATION | PAGE 7 |
| 5 MAINTENANCE | PAGE 7 |
| 6 TECHNICAL SPECIFICATIONS | PAGE 8 |

1 GENERAL

1.1 INTRODUCTION

Thank you for purchasing a Technifogger which has been developed for the application of diluted disinfectant as a fog in to the atmosphere.

The effect of this is that the disinfectant solution is applied thoroughly and evenly to all surfaces, ensuring an effective disinfection of the room including areas often missed by traditional methods.

1.2 WARRANTY CONDITIONS

For a period of 24 months from the date of delivery, your dealer will honour a warranty on parts that do not function properly due to material defects or manufacturing faults. The warranty is reduced to 12 months on wearing parts (highlighted in the section on spare parts). The warranty will cover replacement or repair of the defective part. Costs with regard to dismantling, forwarding and reassembly are defrayed by the purchaser. Any return shipments from the dealer following completed repairs are defrayed by the dealer. The defective parts remain the property of the dealer. Claims that may be made for legal reasons, ordinary wear and tear, as well as damage to parts that can be attributed to negligent or improper handling are not covered by the warranty.

The warranty will be void if the Technifoamer has been exposed to frost. The warranty will also be void if modifications or repairs have been carried out by unauthorised personnel. Warranty claims will only be accepted if they are reported to the dealer immediately after damage has been discovered. The warranty is terminated if there is a change of ownership of the machine. The manufacturer and its dealers cannot be held liable for personal injury, damage to equipment, loss of earnings, including production losses, losses to stock or similar that may have arisen as a result of defects or delayed delivery of the sold product, irrespective of the cause, including manufacturing faults or material defects. In addition, please refer to our general terms and conditions of sales and delivery.

1.3 PROTECTION FROM FROST

The technifogger must never be exposed to frost as may cause damage to the equipment.

Declaration of conformity

We declare that the Technifogger is in conformity with the following EU directives:

Machinery Directive 2006/42/EC

And further conform with the following EU Harmonised Standards:

EN ISO 1200:2010 & EN 809:1998+A1:2009



Director



2 SAFETY

2.1

CAUTION. The Technifogger produces atomised moisture and sprays it in to the atmosphere. In certain cases this can be extremely harmful to the respiratory system depending on the chemicals being used. A clear exit route must be established before switching on the equipment.

2.2

Please observe these safety instructions in conjunction with the safety instructions provided with the cleaning chemicals being used.

2.3

Always wear protective clothing in accordance with the instructions provided with the cleaning chemicals being used.

2.4

Do not attempt to start using the equipment until you have fully read and understood these instructions.

2.5

Ensure that the unit is not being used near to any electrical equipment

2.6

Always ensure that the chemical is correctly diluted according to the chemical manufacturers instructions. NEVER use the technifogger to apply undiluted chemical.

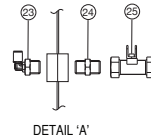
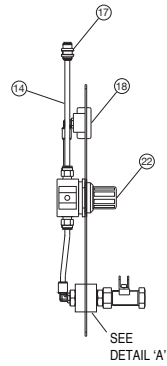
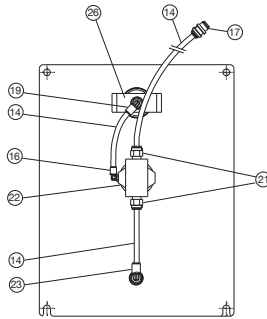
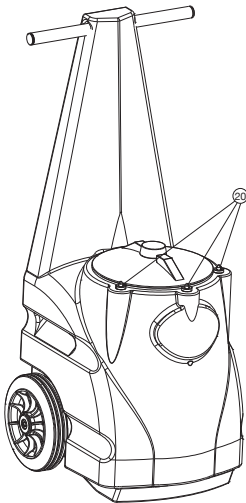
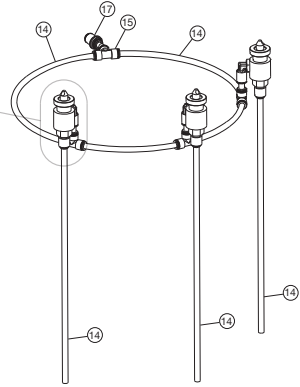
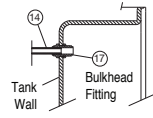
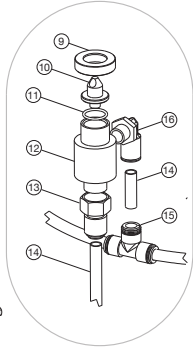
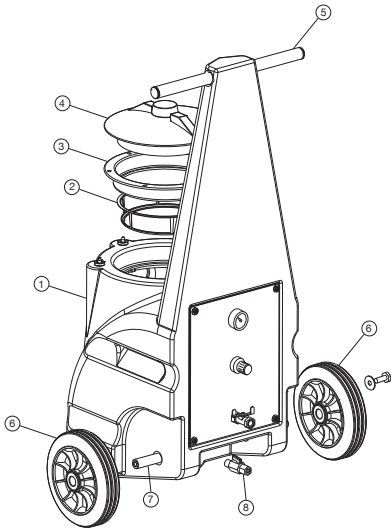
2.7

Only use disinfecting chemicals which are approved by the chemical supplier to be safe for fogging applications, and approved for use in the food and agricultural industries. Chemicals which are classified as highly corrosive, aggressive, toxic or pose a health risk to humans or animals must not be used.

2.8

The equipment must not be used with solvents or volatile liquids which pose a fire risk.

3 SPARE PARTS



3 SPARE PARTS

| POSITION | DESCRIPTION | ORDER CODE |
|----------|-------------------------------------|------------|
| 1 | Technifogger Red Tank | 9404 |
| 1 | Technifogger White Tank | 9405 |
| 1 | Technifogger Blue Tank | 9403 |
| 2 | Technifogger Basket Filter | 9183 |
| 3 | Technifogger Lid Ring | 9182 |
| 4 | Technifogger Lid | 9184 |
| 5 | Technifogger 40 handle | 9289 |
| 6 | Technifogger Hygienic Wheel | 9186 |
| 7 | Technifogger 40 st st axle | 9402 |
| 8 | 1/2 st st twist grip valve | 9410 |
| 9 | Fog Nozzle ring | 9430 |
| 10 | Fog Nozzle | 9432 |
| 11 | Nitrile O Ring For Fog Nozzle | 1886 |
| 12 | Fog nozzle body | 9431 |
| 13 | 1/4 fm - 6mm push fit adaptor | 9433 |
| 14 | Technifogger tube kit | 9436 |
| 15 | 6 x 6 x 6mm push fit tee | 9435 |
| 16 | 1/8m - 6mm push fit elbow | 9434 |
| 17 | 6mm bulkhead fitting | 9443 |
| 18 | Panel mount gauge* | 9427 |
| 19 | 1/8 fm - 6mm push fit elbow | 9426 |
| 20 | 1/2 st st lock nut | 9438 |
| 21 | 1/4m - 6mm push fit adaptor | 9425 |
| 22 | Technifogger Air Regulator* | 9126 |
| 23 | 1/4m - 6mm push fit elbow | 9421 |
| 24 | 1/4-1/4 SS LP Adaptor | 9000T |
| 25 | 1/4 St St Ball Valve (TF Air Inlet) | 9287 |
| 26 | Pressure Gauge Bracket | 9428 |

* Wearing parts

4 OPERATION

START UP, USE & CLOSE DOWN

- 4.1 The size of areas which can be fogged by one unit vary depending on humidity, air pressure and liquid viscosity. It is the responsibility of the operators and management to ascertain the effectiveness of the fogging unit by running their own trials including any relevant surface testing, in conjunction with the chemical supplier.
- 4.2 The Technifogger requires a clean, compressed air supply delivering 150-300L of compressed air at 3-6 bar pressure.
- 4.3 Ideally the air supply should be isolatable from outside of the area being treated so that the fogger can be turned off during discharge if needed.
- 4.4 Ensure that the area to be fogged is well prepared and that anything that must not be subjected to fog is isolated, covered or removed.
- 4.5 Ensure that all personnel have vacated the area.
- 4.6 Decide what quantity of chemical solution is to be discharged in to the room.
- 4.7 Fill the Technifogger with the desired quantity of pre diluted chemical solution. Bear in mind that normally all of the solution will be discharged in one application.
- 4.8 Connect Technifogger to a compressed air line
- 4.9 Switch on compressed air line and set the regulator on the back plate until the pressure gauge reads 4 bar, or until desired fog dryness is reached.
- 4.10 Vacate the area and close the exit door
- 4.11 Ensure that the area has been suitably cordoned off in accordance with site rules so that persons cannot inadvertently enter the area during application.
- 4.12 Once solution has been completely discharged, wait until the fog has completely cleared before re entering the area.
- 4.13 Switch off air supplies and remove equipment from area.
- 4.14 If the area is fitted with an extraction system we would recommend this is switched off during use and switched back on immediately after fog application.
- 4.15 Remove any cordons and hazard warning signs which were put in place at 4.11.

5 MAINTENANCE

EVERY DAY

- 5.1 After every use run the unit with clean water only in the tank to thoroughly rinse chemicals out of the nozzle system, to avoid nozzle malfunction due to chemical residue.



6 TECHNICAL SPECIFICATIONS

| | | |
|--------------------|------------------------------|---------------|
| Air | Inlet Connection | 1/4" bspfm |
| | Max inlet pressure | 6 bar |
| | Min inlet pressure | 4 bar |
| Accessories | Max Hose length | N/A |
| | Weight and dimensions | Weight |
| | Weight (empty) | 12kg |
| | Height | 965mm |
| | Width | 400 mm |
| | Depth | 400 mm |
| | Capacity | 40 Litres |



QJS, Saxilby Enterprise Park, Lincoln LN1 2LR
Tel 01522 703703 **Fax** 01522 703773
Email info@qjs.co.uk **Web** www.qjs.co.uk | www.technifoamer.com

