

HALO



Installation instructions for HALO soap dispenser

Box Contents:

- 1 Dispenser
- 1 Opening Key
- 4 Fitting Screws and Plugs

Tools Required:

- Drill
- Screwdriver

1



Open the unit with the key provided.

2

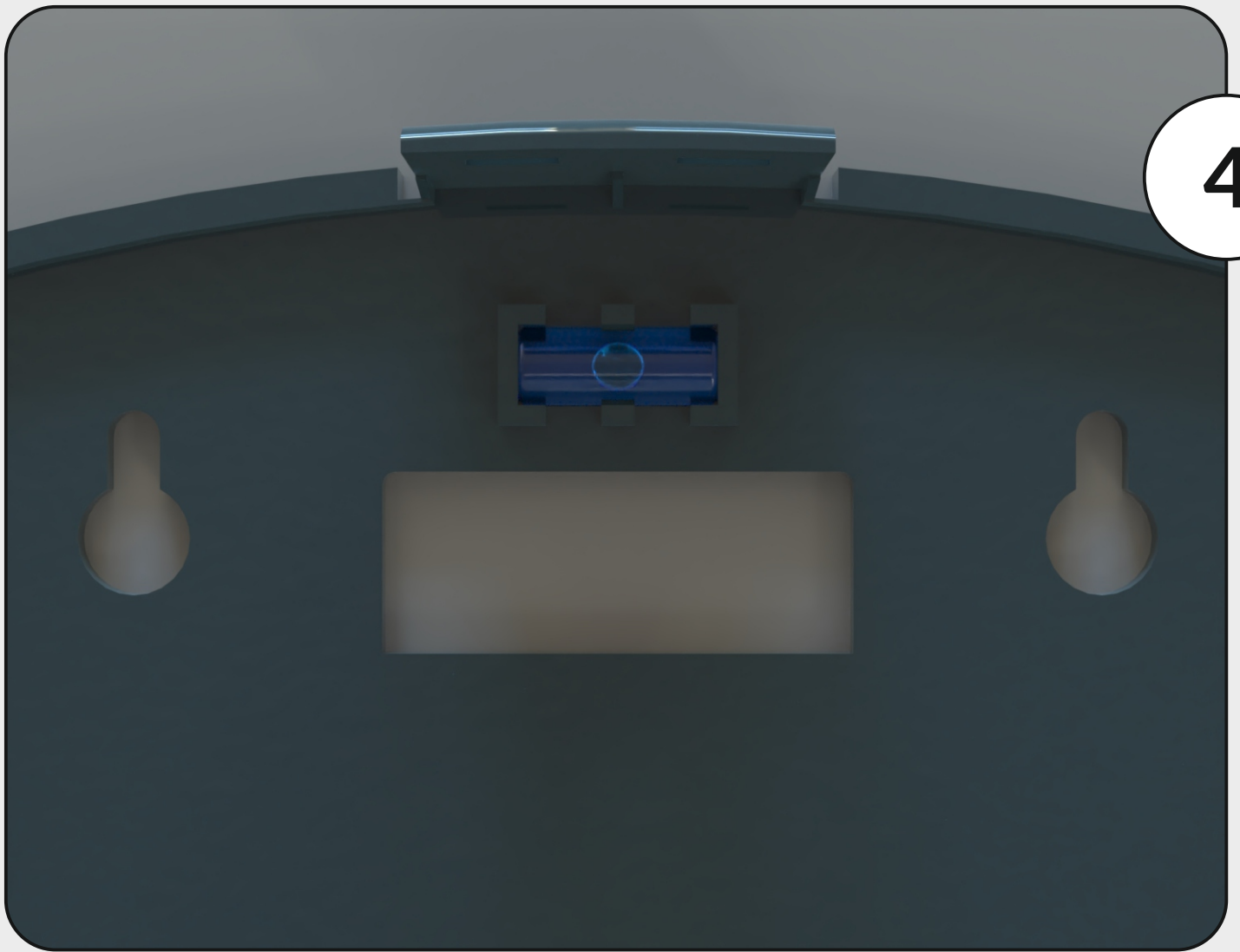


Remove the reservoir and put to a side for installation.

3



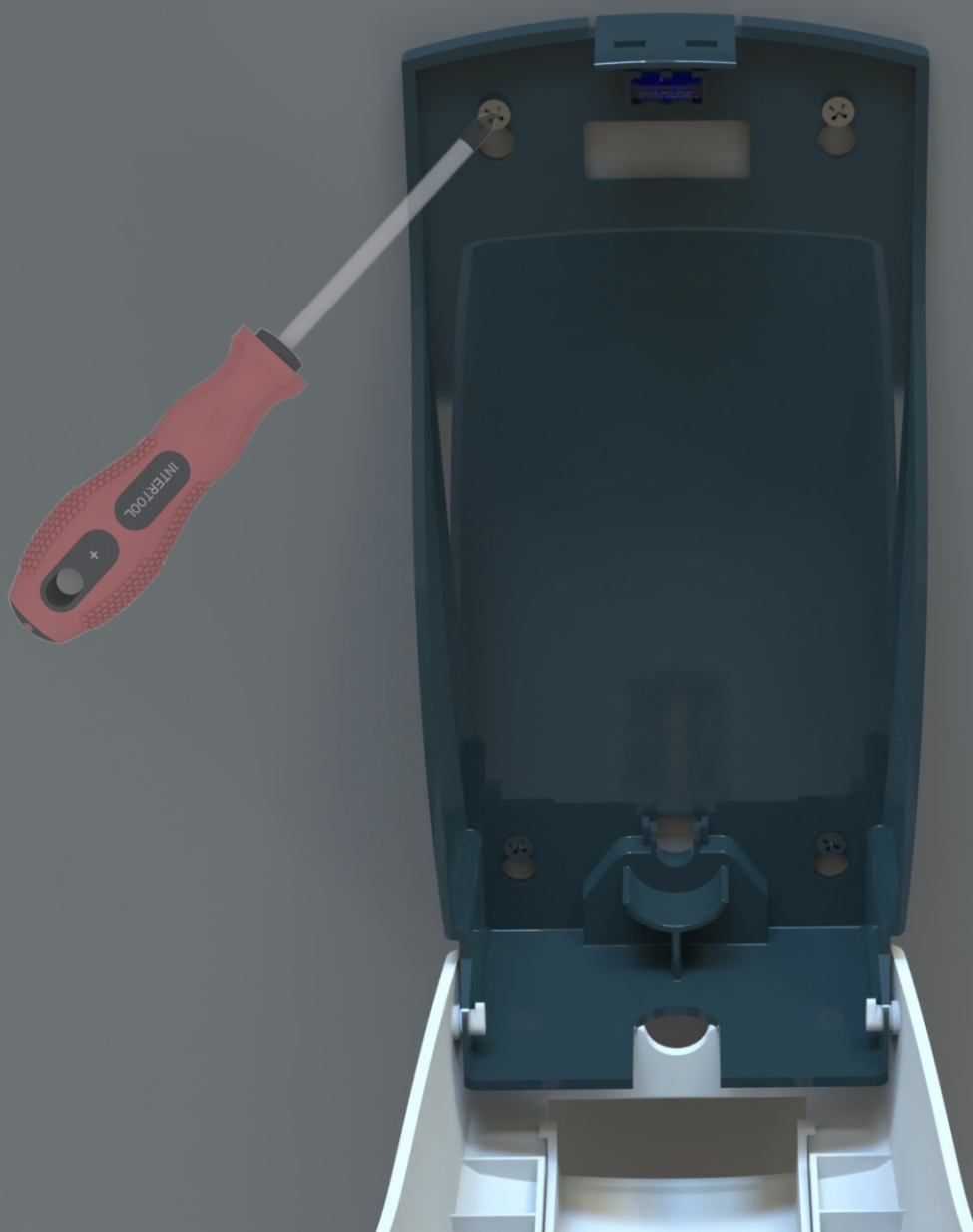
Mark out the holes for fixings.



4

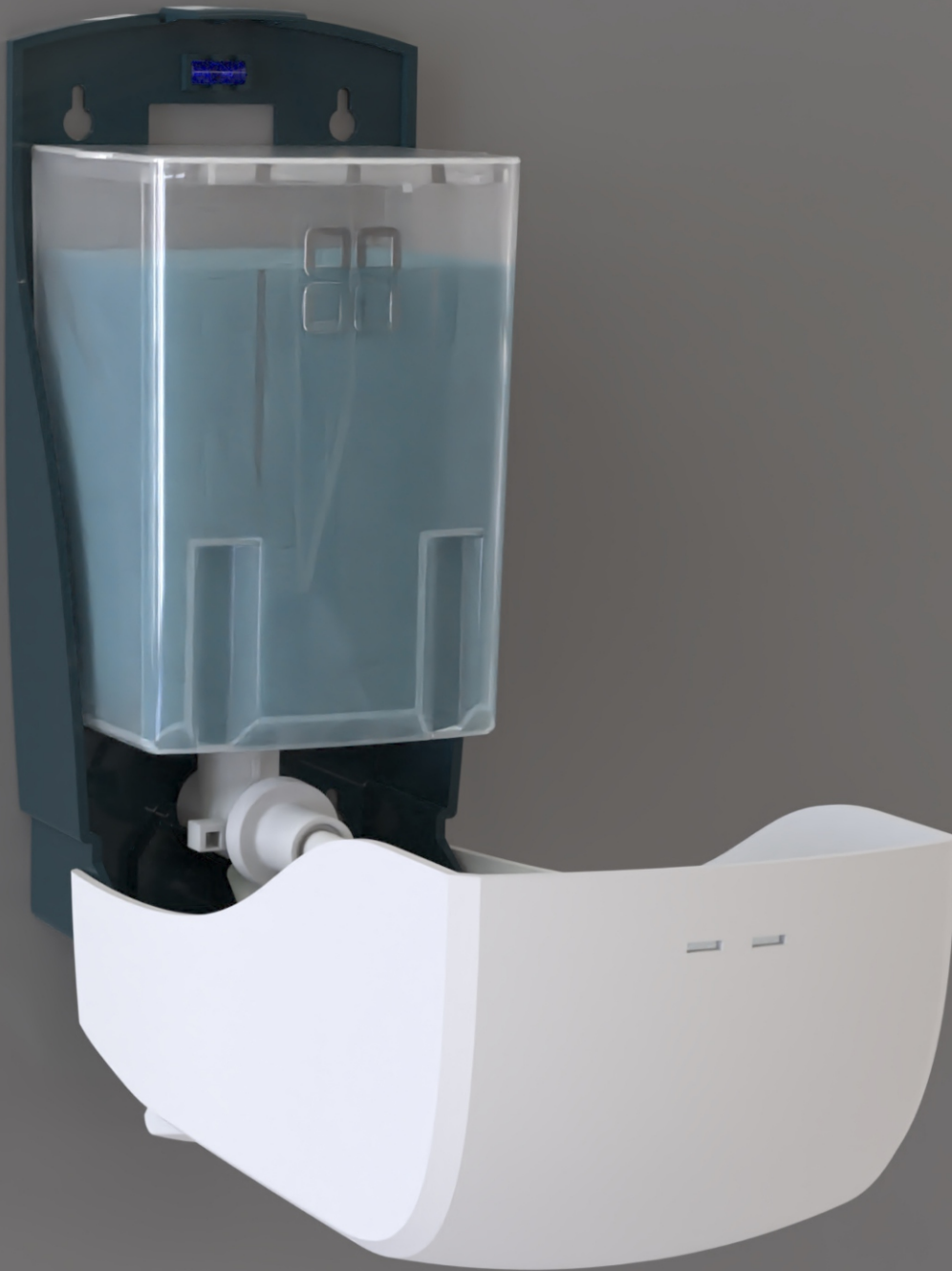
Please see the pre-installed spirit level to aid installation.

5



Drill the marked out holes to the size of the fixings provided then use a screwdriver to fix the unit to the wall. The unit should be hand tight to the wall.

6



Reattach the reservoir and fill it with the relevant product to the pump supplied.

7



Prime the dispenser by pushing the button, after a few pumps, the soap should start to flow, and the unit is ready to be used.