

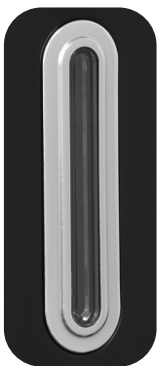
1 LITRE FOAM SOAP DISPENSER



HALO

- CONSTRUCTED IN ABS PLASTIC IN A CONTEMPORARY 'SILK TOUCH' SATIN BLACK FINISH.
- INTERCHANGEABLE METALLIC HALO VIEWING WINDOW.
- AVAILABLE IN EIGHT DIFFERENT COLOURS AND TINTS.
- SPIRIT LEVEL INSTALLED ON THE BACKPLATE TO AID INSTALLATION.
- TRANSLUCENT PUMP WITH MARINE GRADE STAINLESS STEEL SPRING.
- 1LTR RESERVOIR WITH FOAM PUMP. 0.25ML LIQUID EXPANDING TO 5ML FOAM.
- PRODUCT BRANDING AVAILABLE FOR ADDED PERSONALISATION.
- KEY OPERATED WITH EASILY DISTINGUISHABLE KEY.

WHAT COLOUR IS YOUR HALO?



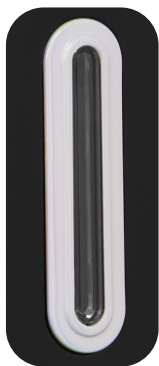
SILVER

CODE:
HAL22
BSL



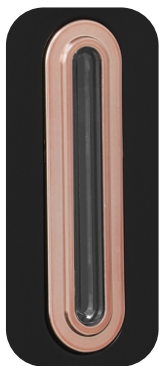
GRAPHITE

CODE:
HAL22
BGT



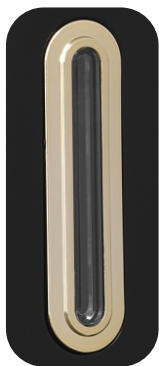
PEARL

CODE:
HAL22
BPL



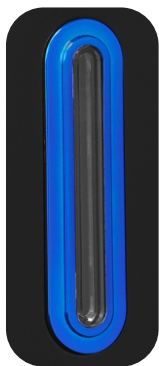
ROSE GOLD

CODE:
HAL22
BRG



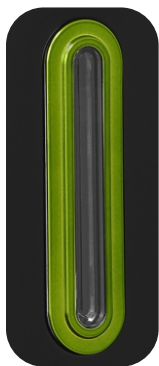
GOLD

CODE:
HAL22
BGD



SAPPHIRE

CODE:
HAL22
BSP



EMERALD

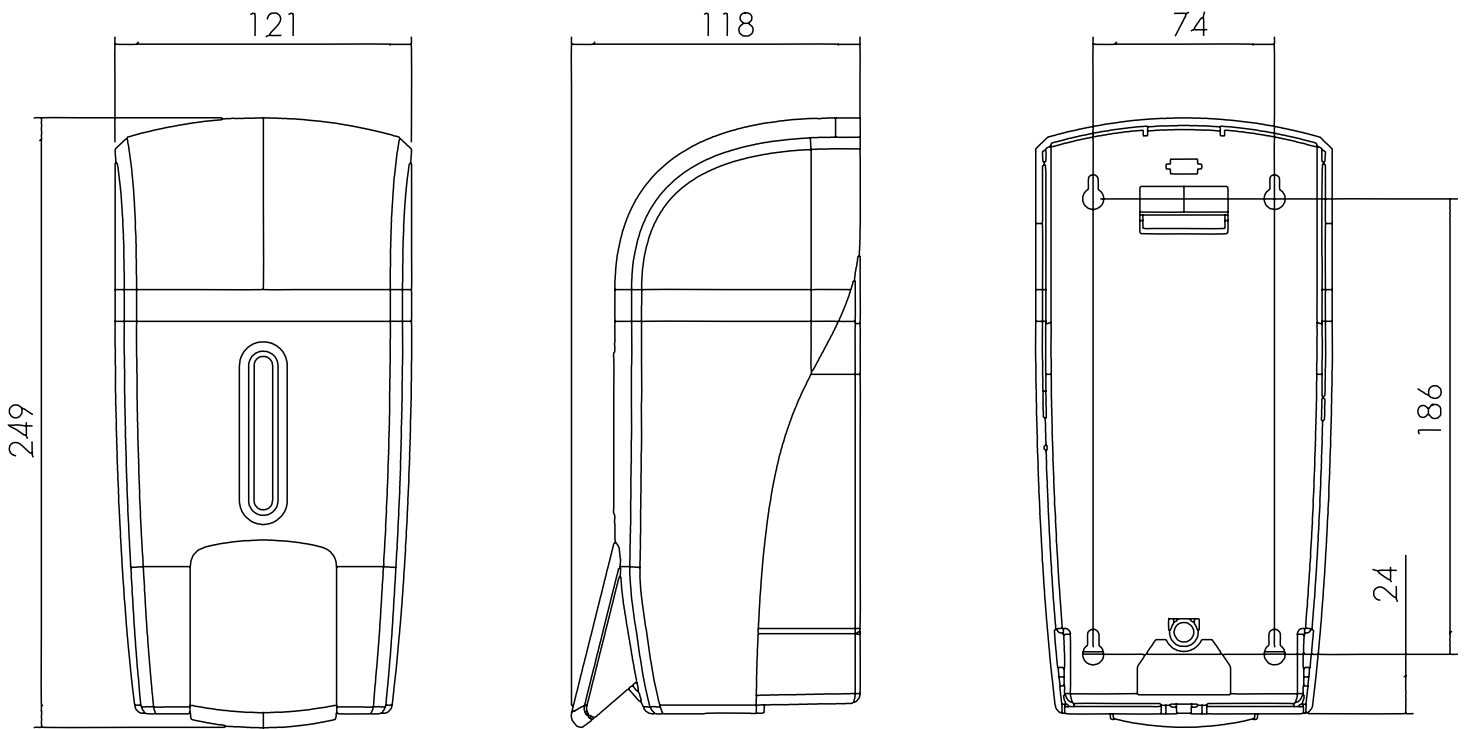
CODE:
HAL22
BED



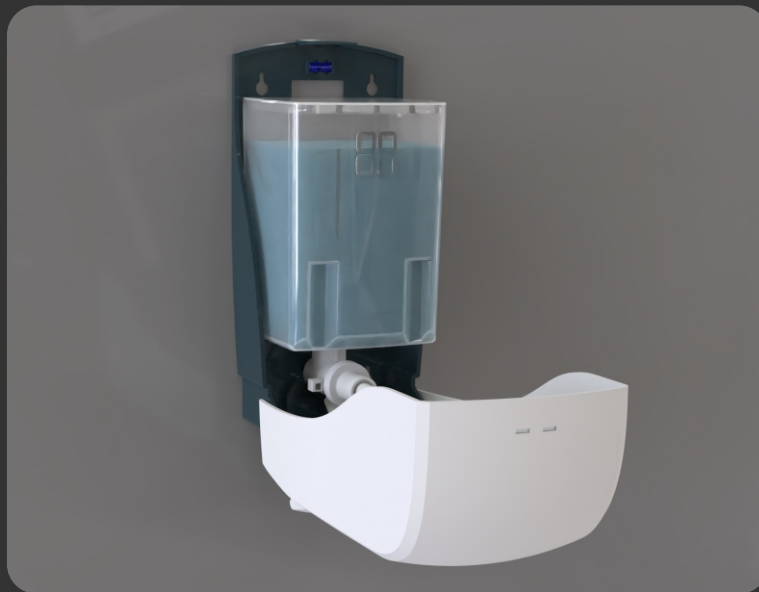
RUBY

CODE:
HAL22
BRB

DIMENSIONS IN MM:-



OPEN VIEW OF DISPENSER:-



THE SYMBOL OF A GENUINE HALO DISPENSER