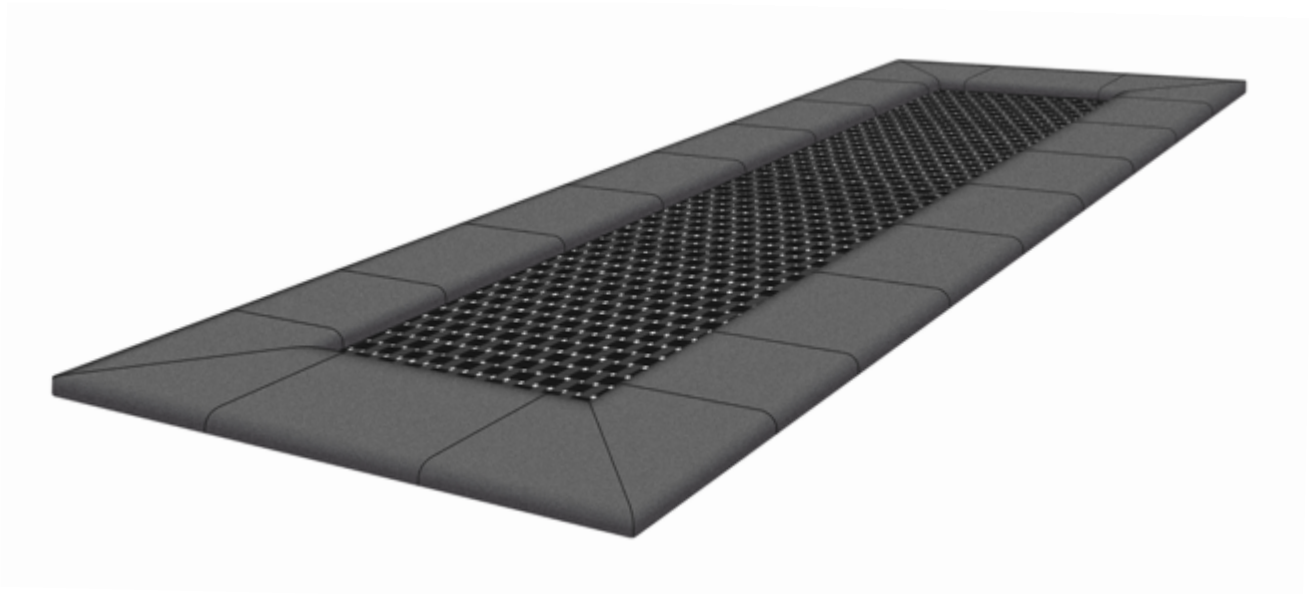


## Use, Maintenance and Assembly Instructions



### **KidsTramp Track** (Art.-Nr. 97004; 97006; 97008; 97009)

General data .....	2
Maintenance and repairs .....	3
Parts list .....	4
Safety rules .....	5
Installation drawing .....	7
Assembly instructions .....	11
TÜV-Certificates .....	12

## General data

Norm: DIN EN 1176

### Art.-No. 97004: KidsTrampTrack „Playground“ 4 m

- Frame dimensions: 400 x 156 x 71 cm

### Art.-No. 97006: KidsTrampTrack „Playground“ 6 m

- Frame dimensions: 600 x 156 x 71 cm

### Art.-No. 97008: KidsTrampTrack „Playground“ 8 m

- Frame dimensions: 800 x 156 x 71 cm

### Art.-No. 97009: KidsTrampTrack „Playground“ 10 m

- Frame dimensions: 1000 x 156 x 71 cm

## Weight

The weight per mounted frame depends on its length. One meter of the track weighs approximately 40 kg - without springs, jumping bed, screen printing boards and impact protection.

## Possible locations for Kids Tramp Track

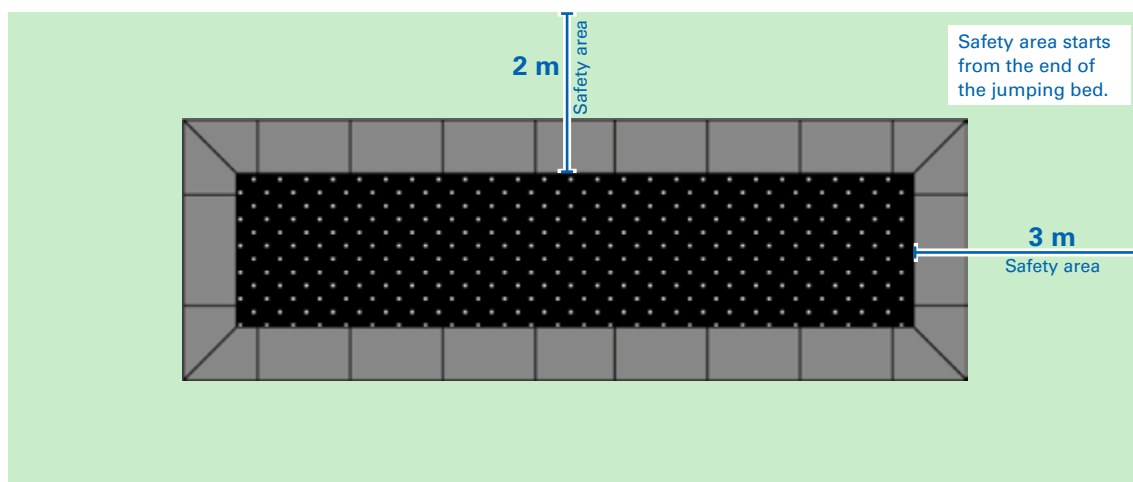
The trampoline with the yellow jumping bed (model „Kindergarten“) should basically be installed only in supervised areas. If you have a black jumping bed (model „Playground“) you will be allowed to install the trampoline in unattended areas.

- Public parks
- Garden show area
- Schools and kindergartens
- Water parks
- Recreation parks
- Camping grounds
- Shopping malls
- Pleasure grounds
- Supervised/not supervised playgrounds (depending on the jumping bed)
- Vital parcours, ↪ tness paths, ↪ tness parcours

## Safety room and distances – Please see page 6

**Above:** Over the trampoline there should be a free space of approx. 3,50 metres (no trees, power lines, etc.)

**Surrounds:** around the trampoline you must consider a **safety area of at least 2 x 3 m**.



## Planning details

The kind of arrangement of the pit and of its surrounding area depends on the local conditions. In case of doubt please ask the horticulturist respectively the responsible building company, which is in charge of trenching.

## Installation details

The trampoline is demounted when it is delivered. It will be installed on-site ready for use by a qualified staff ordered by the dealer. There should be sufficient people who help to get the trampoline down off the truck and carry it to the final location.

### Time needed to install the trampoline

The Kids Tramp Track is demounted when it is delivered. To put it into the pit and its installation takes approximately 120 minutes (depending on the length of the track). To glue the impact protection on the frame will take 30 to 60 minutes.

### Required special tools

You will need a spade or excavator to dig out the recess.

### Foundation plan

See the recommended assembly for instructions.

## Care/maintenance

### Care instructions

The Kids Tramp Track does not require any special care. During the winter months, you may need to cover the jumping bed. Large, sustained falls of snow place unnecessary strain on the springs. Carefully remove the snow at regular intervals, or dismantle the jumping bed during the winter months.

### Inspection

The trampolines must always be examined for possible damage before use. It must particularly be ensured that the impact protection, jumping bed, and springs do not show any signs of damage. Any damage must be rectified immediately. If there is any doubt concerning the correct functioning of the product, it must always be examined by an expert (e.g. equipment operator or maintenance company).

**Products installed in public areas must be regularly inspected by the appropriate maintenance services employed to examine playgrounds to ensure they are in a perfect technical condition.**

### Care/maintenance

If defects are found on the jumping bed, impact protection or the springs which prevent hazard-free jumping, the Kids Tramp Track must be taken out of use and the defects rectified immediately. If there is any doubt concerning the correct functioning of the product, it must always be examined by an expert (e.g. playground operator, equipment manager or maintenance company).

### Repairs measures

- Missing parts must be replaced;
- Damaged jumping beds must be replaced;
- Overstretched, damaged and stiff springs must be replaced. Signs of this are e.g. that the spring body has uneven coil distances or that stretched spring bodies in the relaxed state do not return to their original position

#### Replacing the springs:

- Removal: Use the assembly tool provided (spring compressor) to unhook the steel springs from the jumping bed first, and then from the welded mounting hooks.
- Fitting: Hook the steel springs onto the frame first, then onto the jumping bed. This will be easier if the mounting hooks are positioned a little higher on the bed.

**Important:** Always hook the springs on with the eyelet facing downwards in the jumping bed!



TYPE OF INSPECTION	FREQUENCY	CONTENT
Visual routine inspection	<ul style="list-style-type: none"> <li>• Infrequent use: monthly;</li> <li>• Moderately heavy use: weekly;</li> <li>• Heavy-duty use or where there is a high risk of vandalism: daily.</li> </ul>	<ul style="list-style-type: none"> <li>• Visual inspection of the jumping bed and impact protection;</li> <li>• Visual inspection that the springs are complete;</li> <li>• Check for cleanness, sharp edges, condition of the adjacent floor areas, etc.</li> </ul>
Operational inspection	<ul style="list-style-type: none"> <li>• Low use: quarterly;</li> <li>• more frequent use: monthly</li> </ul>	In addition to the visual check: <ul style="list-style-type: none"> <li>• check the ground clearance;</li> <li>• check for damage from corrosion;</li> <li>• check for missing parts;</li> <li>• check for excessive wear and tear.</li> </ul>
Annual main inspection	<ul style="list-style-type: none"> <li>• Once a year.</li> </ul>	General assessment of the safe operational condition of the equipment. In addition to visual and operational inspection, check that: <ul style="list-style-type: none"> <li>• the bed is hooked perfectly into position;</li> <li>• there are no cracks or damage in the frame;</li> <li>• the springs are not damaged or overstretched;</li> <li>• the impact protection is fitted correctly;</li> <li>• always hook the springs on with the eyelet facing downwards</li> </ul>

## Parts list (scope of delivery)

Art.Nr. 97004; 97006; 97008; 97009	Unit
Longitudinal frame parts	Depending on the length of the track
Short side frame parts	2
Base for the cross connection	Depending on the length of the track
Tension springs for the Kids Tramp Track	Depending on the length of the track
Wooden covers - lengthwise	Depending on the length of the track
Wooden covers - crosswise	2
Jumping bed	1
Impact protection	Depending on the length of the track
Typelabel with warnings	1

**\*Note:** products come with a valid TÜV certificate for the Kraiburg Relastec EUROFLEX® impact protection slabs. If impact protection systems from other companies are used, these must be permitted and certified for fall heights of minimum 1 m (in accordance with DIN EN 1177).

### All spare parts available from Eurotramp upon request



The very highest demands are placed on this high-end-product. For safety reasons, only use original replacement parts! The use of non-original replacement parts can result in a considerable risk to the user (danger of accidents, technical defects, loss of the manufacturer's liability, loss of warranty etc.).

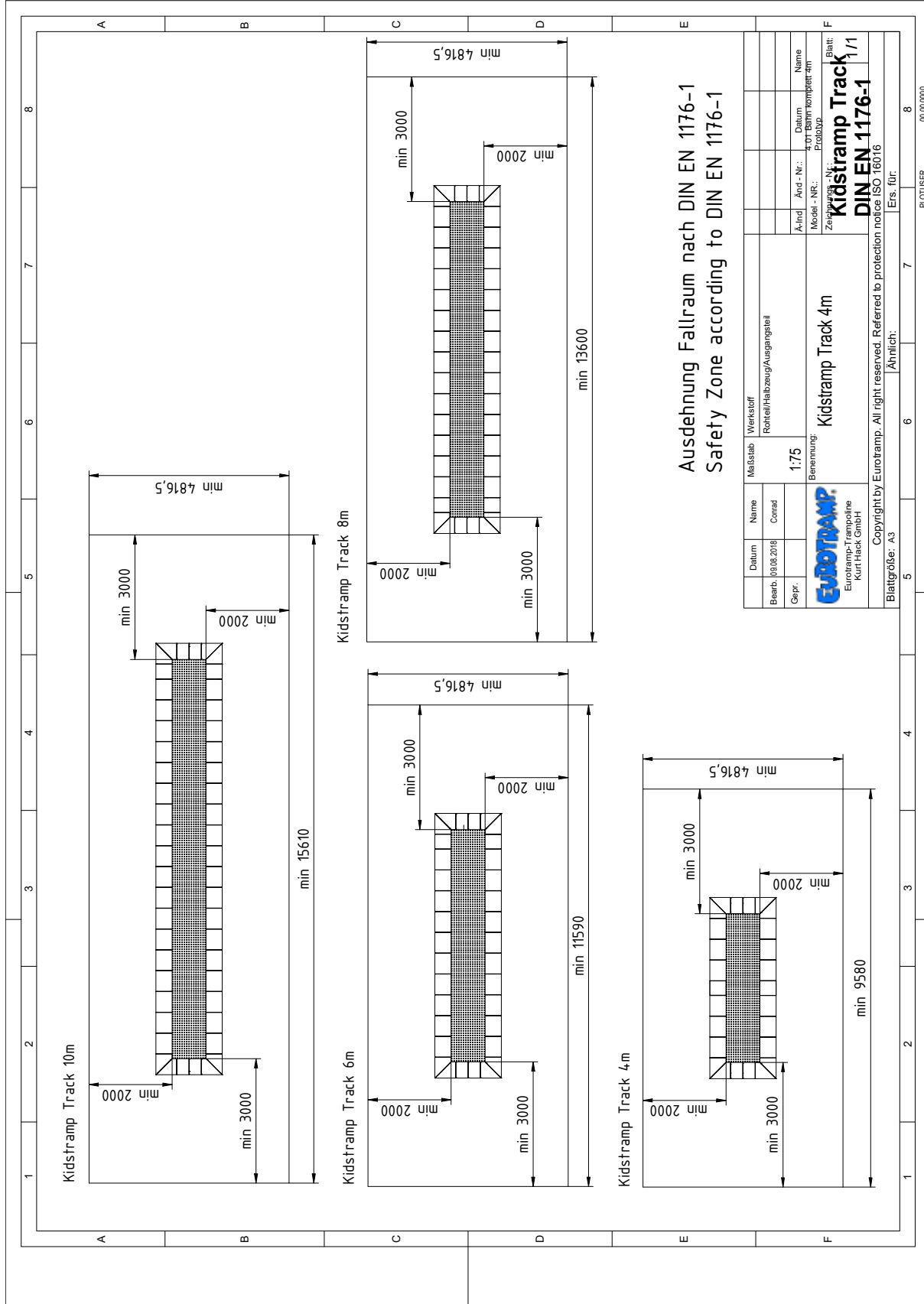
## Safety rules

Serious injury is caused not just by falling from the trampoline, uncontrolled landing on the jumping bed on the head or neck can also result in life-threatening injuries. The best protection against accidents and injury is respect when jumping and observation of a few safety rules. Before using the trampoline, ensure that the equipment is in perfect technical condition.

### The most important rules:

- Jump alone as several jumpers at one time poses a big risk.
- Never jump off the trampoline. You will put yourself at risk if you underestimate the forces on the trampoline.
- Consider your skills as far as condition and motor function are concerned.
- Jumping off the trampoline and uncontrolled jumping can cause performers to land on the head or neck leading to serious injuries. Thus all kind of exercises which include somersaults and belly jumps are strictly forbidden.
- Please act with caution in the cold season. After having removed the snow from the jumping bed it can be used again.
- Big and permanent snow load will unnecessarily weigh down the springs. The snow has to be carefully removed. As an alternative the jumping bed has to be dismantled during the winter months. There is optionally the possibility to purchase a walkable wooden coverage. It will protect the jumping bed against climatic influences and prevents the use of the trampoline.
- Strong gusts of wind are likely to affect jumping on a trampoline.
- In case of several trampolines that are installed next to each other please do not jump from the one trampoline to the other one.

# Safety area - all KidsTramp Track models

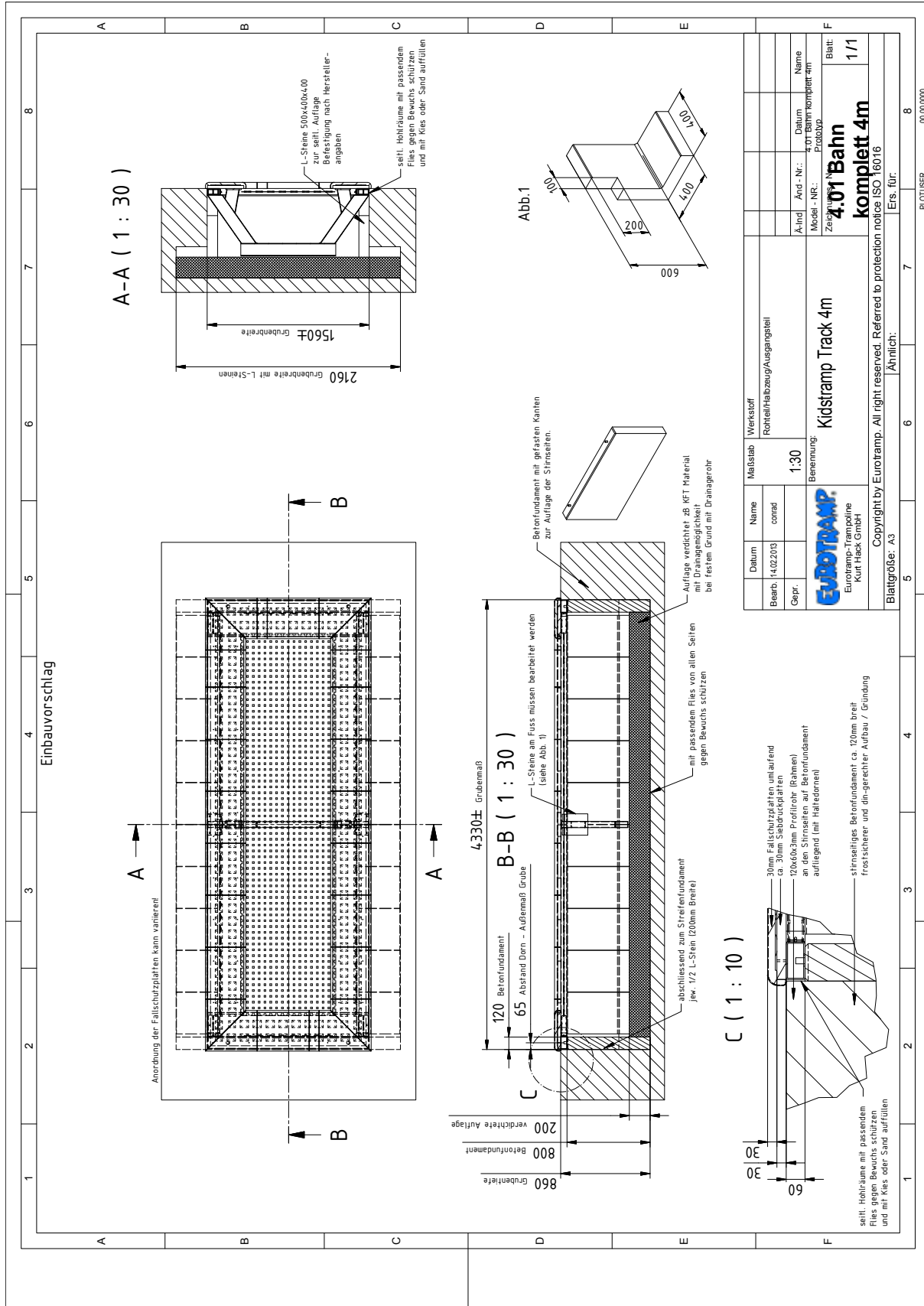


Ausdehnung Fallraum nach DIN EN 1176-1  
 Safety Zone according to DIN EN 1176-1

Datum		Name		Werkstoff		Name	
Bearb. 09.08.2018		Conrad		Rohrteil/Halbzeug/Ausgangsteil		Name	
Gepr.		1:75		Benennung:		Datum vom kompletten Prototyp	
				Kidstramp Track 4m		Modell - Nr.:	
				EUROTRAMP		Zeichnungs - Nr.:	
				Eurotramp-Trampoline Kurt Hack GmbH		Kidstramp Track 1/1	
				Copyright by Eurotramp. All right reserved. Referred to protection notice ISO 18016		DIN EN 1176-1	
Blattgröße: A3		Ähnlich:		Ers. für:		Blatt:	
						1/1	

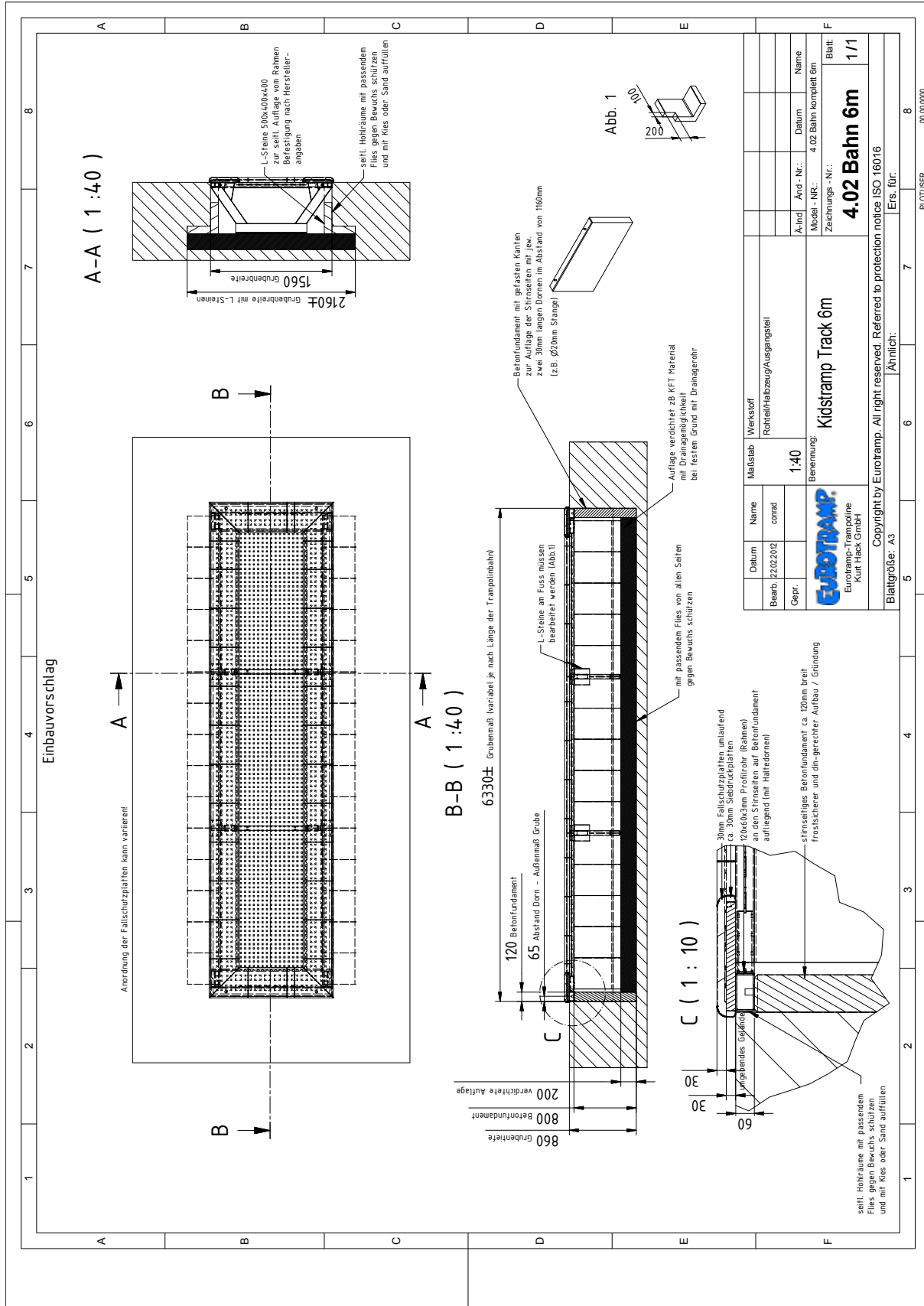
00.00.0000  
 PLOTUSER

# Installation draft Kids Tramp Track 4 m (Art.-No. 97004)



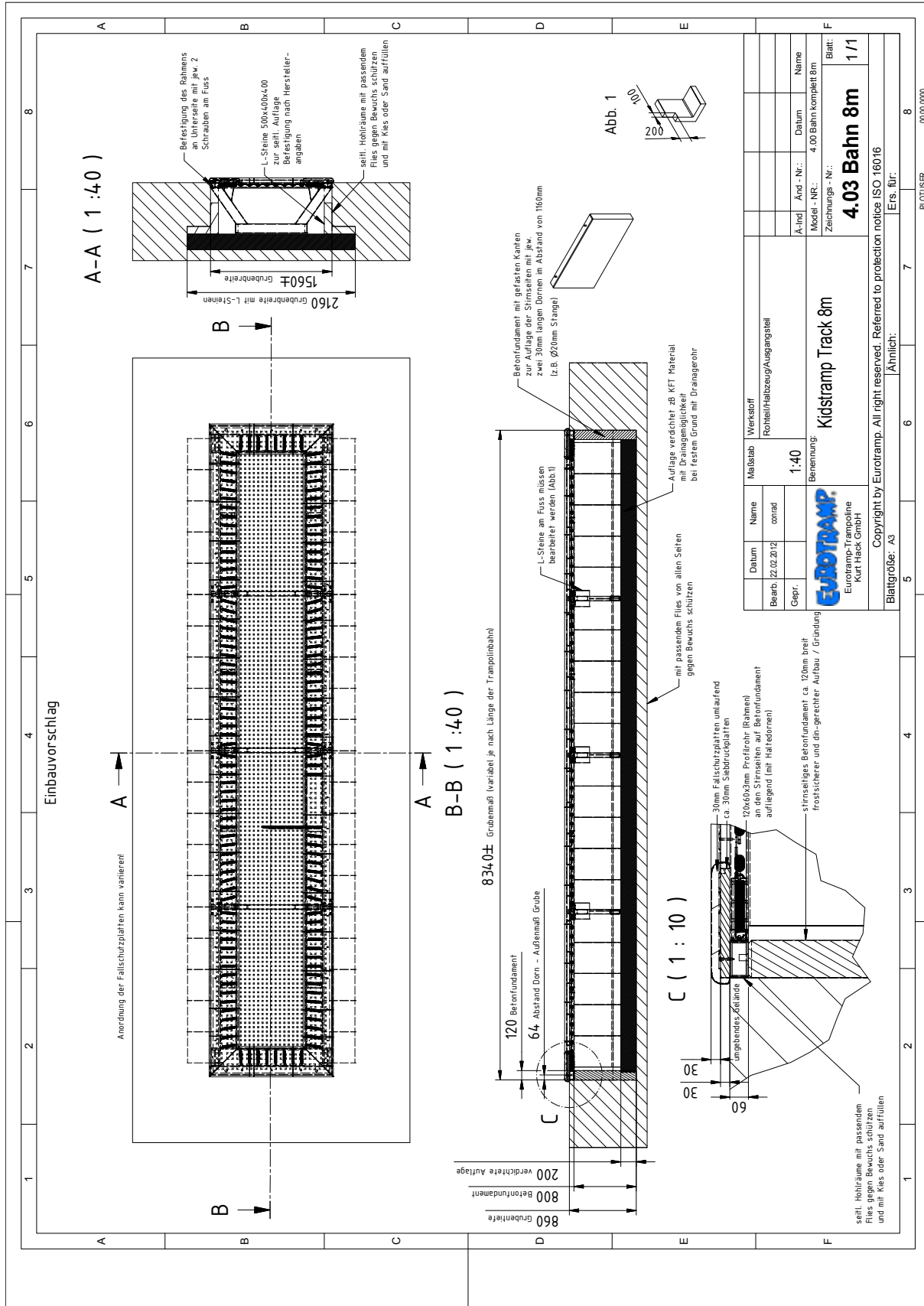
Bezeichnung	Kidstramp Track 4m	
Maßstab	1:30	
Werkstoff	Rohteil/Halbzeug/Ausgangsteil	
Datum	Name	Gepr.
14.02.2013	corad	
Eurotramp-Trampoline Kurt Hack GmbH		
Ärztlich	Änd.-Nr.	Datum
Zeich.-Nr.	Protokoll	
4.01		
Blatt	1/1	

# Installation draft Kids Tramp Track 6 m (Art.-No. 97006)

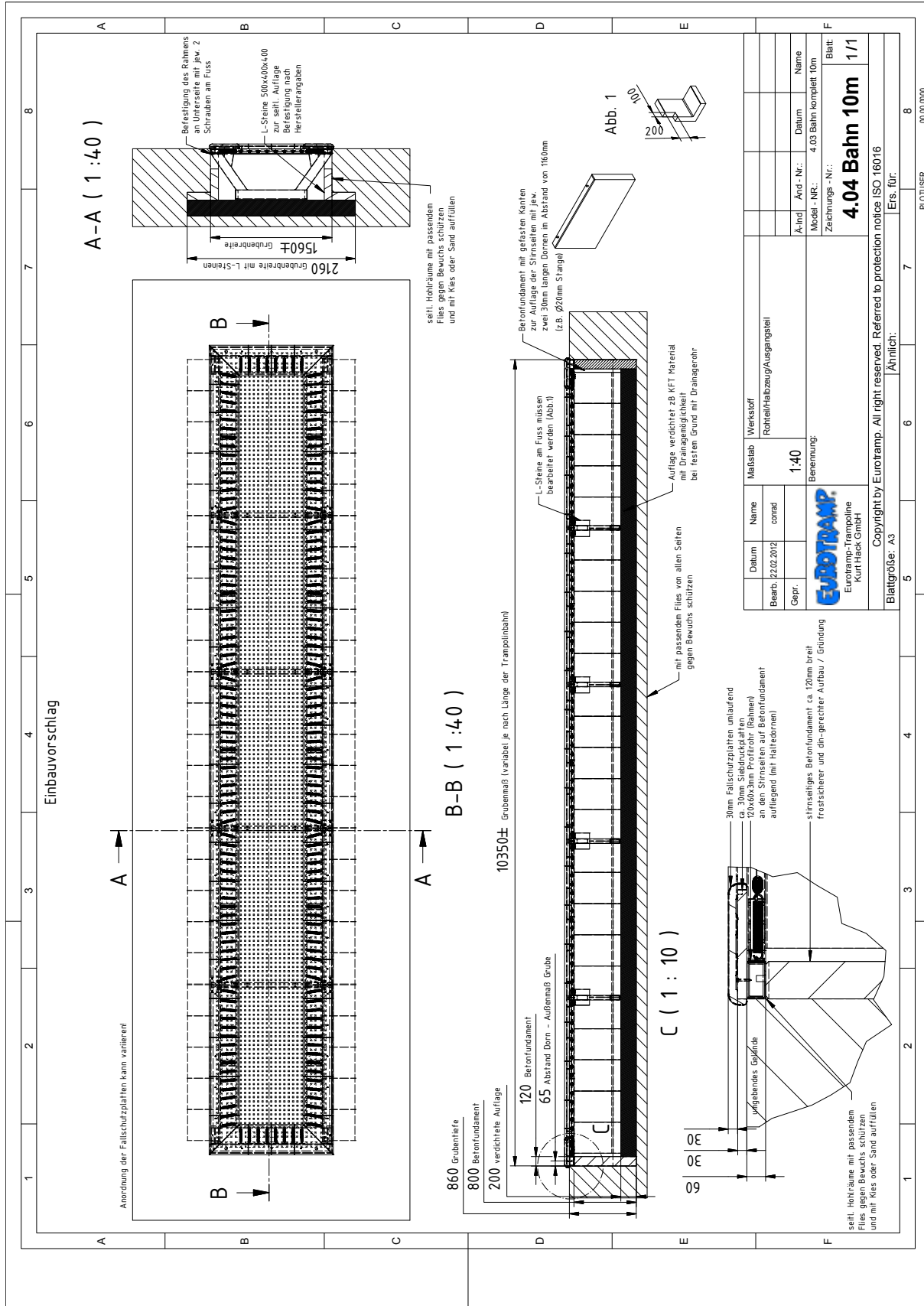




# Installation draft Kids Tramp Track 8 m (Art.-No. 97008)



# Installation draft Kids Tramp Track 10 m (Art.-No. 97009)



Datum		Name		Werkstoff	
Bearb. 22.02.2012		corad		Rohrteil/Holzbozug/Ausgangsteil	
Gepr.		1:40		Bemerkung:	
				Eurotramp-Trampoline Kurt Hack GmbH	
Ärind		Änd.-Nr.		Datum	
				4.03 Bahn komplett 10m	
Modell-Nr.:		Zeichnungs-Nr.:		Blatt:	
				1/1	
<b>4.04 Bahn 10m</b>					
Copyright by Eurotramp. All right reserved. Referred to protection notice ISO 18016					
Ers. für:					
Ähnlich:					
Blattgröße: A3					

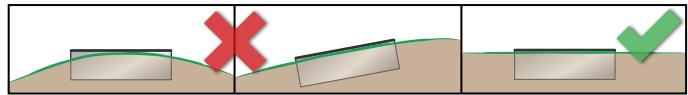
PLOTUSER 00.00.0000

## Assembly instructions

### Dig a pit

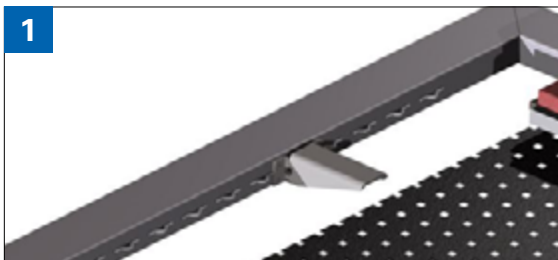
- Please dig the pit as suggested in the attached technical drawing (technical drawings from page 7-10).
- If the ground is not very stable (sandy), please  $\times$  the walls with concrete or stone plates.
- The steel frame can be put on the ground or on a circular concrete base. In the corners there should be at least provided appropriate bed-plates.
- Please consider „shoring up“ the lower sides of the pit to prevent collapsing the ground.
- If the ground does not drain naturally (water-impermeable), a suitable drainage (e.g. washed grit) must be installed. So that the water is able to infiltrate into the ground. If the ground is waterproof (e.g. brickearth, cement bed) there was the risk filling up.

**Attention:** the trampoline may only be installed on a flat surface and under no circumstances on a mound, incline or slope edge.



### Installation of the jumping bed

- First of all you will have to create a suitable base in the pit (e.g. concrete L-shape stones).
- Then put the steel frames on the pit and screw the edges together with the foot



- The metal angles shown on the left serve as a stilt for the screwed screen printing boards. The accordingly equipped frame profiles have to be mounted with the closed side of the angle pointing upwards.

- The frame has to be completely built up and screwed together in the pit before the jumping bed can be mounted.
- Installation of the jumping bed (embossed side facing up), the upper side of the reinforced belt fabric is marked (thick fibre).
- Hinging of the jumping bed (to be effected preferably by 2 persons).
- First of all hinge 2 steel springs per corner to fix the jumping bed.
- Then fix the springs at the jumping bed side.
- Fix the springs at the long frame side first and then at the front side. Please fix the springs on the opposite side simultaneously. This is to prevent the springs of being unnecessarily overstretched.
- Afterwards the screen-printing boards will be screwed together with the frame.
- Finally the bonded impact protection will be glued on the screen printing boards with the glue which is included.



**Done!**



Installation video 6 m track  
[vimeo.com/eurotramp/track6m](https://vimeo.com/eurotramp/track6m)



Installation video 8 m track  
[vimeo.com/eurotramp/track8m](https://vimeo.com/eurotramp/track8m)



**If you have any technical question, contact us any time:**

Eurotramp Trampoline - Kurt Hack GmbH  
 Zeller Straße 17/1  
 73235 Weilheim

Tel. +49 (0)7023 - 9495-0 | Fax +49 (0)7023 - 9495-10  
[welcme@eurotramp.com](mailto:welcme@eurotramp.com) | [www.eurotramp.com](http://www.eurotramp.com)

# TÜV-Certificate

ZERTIFIKAT ♦ CERTIFICATE ♦ 認証証書 ♦ СЕРТИФИКАТ ♦ CERTIFICADO ♦ CERTIFICAT

  
 Product Service

## ZERTIFIKAT

Nr. Z1 12 12 30154 023

**Zertifikatsinhaber:** Eurotramp Trampoline  
Kurt Hack GmbH  
Zeller Str. 17/1  
73235 Weiheim  
DEUTSCHLAND

**Prüfzeichen:**



**Produkt:** **Spielplatzgeräte**

Das Produkt wurde auf freiwilliger Basis auf die Einhaltung der grundlegenden Anforderungen geprüft und kann mit dem oben abgebildeten Prüfzeichen gekennzeichnet werden. Eine Veränderung der Darstellung des Prüfzeichens ist nicht erlaubt. Die Übertragung eines Zertifikates durch den Zertifikatsinhaber an Dritte ist unzulässig. Umseitige Hinweise sind zu beachten.

**Prüfbericht Nr.:** 713009167

**Gültig bis:** 2017-11-30

  
 (Bernd-Michael Neukamm)



**Datum:** 2012-12-20  
Seite 1 von 2

TÜV SÜD Product Service GmbH - Zertifizierstelle - Riderstraße 65 - 80339 München - Germany



ZERTIFIKA

  
 Product Service

## ZERTIFIKAT

Nr. Z1 12 12 30154 023

**Modell(e):** Sprungerät Thieme Adventure Tramp:  
Artikelnummer: 97505  
Sprungbahn KidsTrampTrack  
Artikelnummer: 97700, 97701, 97800, 97801

**Kenndaten:**

Artikelname:	Thieme Adventure Tramp
Rahmengröße:	300x200 cm
Art-Nr.:	94800
Tuchart:	drahtverstärktes Gittergewebe
Tuchgröße:	235x134 cm
Blechdicke:	3 mm
Anzahl der Sprungfedern:	62
<b>KidsTrampTrack:</b>	
Breite:	1565 mm
Elementlänge:	2340 mm / 2000 mm
Einbauhöhe:	530 mm
Sprungbahnbreite:	900 mm
Profilmaß:	120 x 60 x 3 mm, feuerverzinkt
Federlänge:	160 mm; Durchmesser 20 mm
<b>KidsTrampTrack Playground:</b>	
Art-Nr. 97700 Anfangs- bzw. Endelement mit drahtverstärktem Gittergewebe	
Art-Nr. 97701 Mittelsegment mit drahtverstärktem Gittergewebe	
<b>KidsTrampTrack Kindergarten:</b>	
Art-Nr. 97800 Anfangs- bzw. Endelement mit PVC beschichtetem Gittergewebe	
Art-Nr. 97801 Mittelsegment mit PVC beschichtetem Gittergewebe	

**Geprüft nach:** EN 1176-1:2008

**Produktionsstätte(n):** 30154

Seite 2 von 2

TÜV SÜD Product Service GmbH - Zertifizierstelle - Riderstraße 65 - 80339 München - Germany

