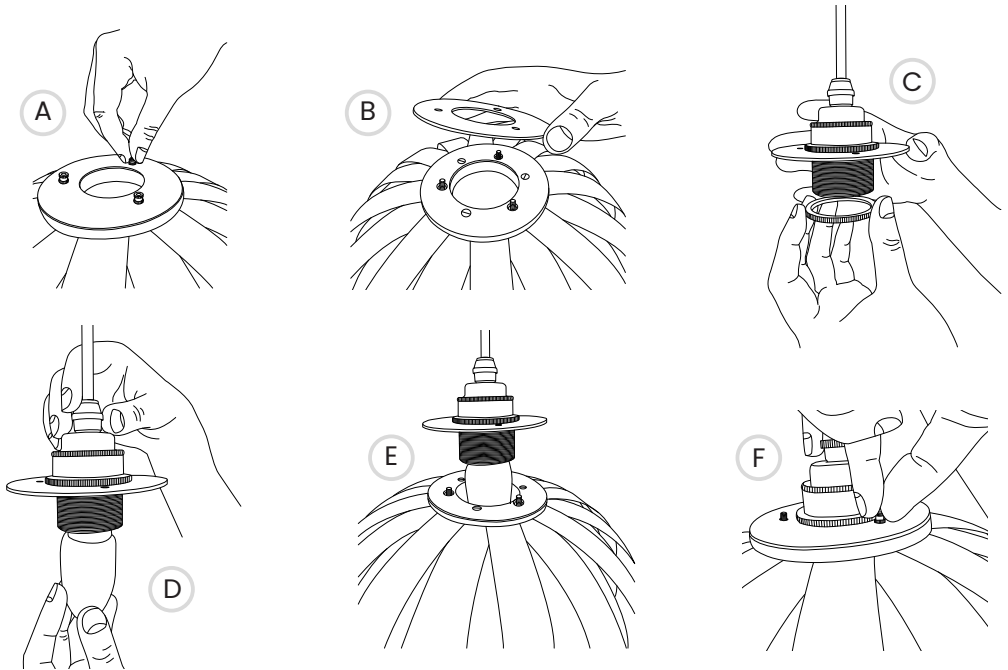


## Urchin X-Small Pendant Light Installation Instructions



**Only qualified persons should assemble the luminaire. If in doubt, consult a suitably qualified person. Installation MUST be carried out in accordance and compliance with current building regulations.**

All Tom Raffield Pendants have been designed to fit an existing E27/ES (Edison Screw) fitting and the optional E27 ceiling kit provided. This must be installed by a qualified electrician before following the instructions below.

**Ensure the electrical supply is turned OFF at the fuse board.**

1. To fit the lampshade to the ceiling kit, unscrew all three of the small brass knurled thumb-turn nuts (A). Remove the thin plywood disk (B) and sandwich it between the two brass metal shade rings on the ceiling kit, ensuring that both are screwed to the very top of the threaded part of the bulb holder (C). The thin plywood disk should be held tightly by the two shade rings.
2. Screw in an E27 (Edison screw) candle shape LED bulb (D). The lampshade has been designed to work with an **LED** bulb, up to a maximum of **25 Watts**. *Only a candle shaped E27 bulb will fit this lampshade.*
3. Once the light bulb is fitted, carefully slot the lampshade over the bulb and bulbholder (E), locating the small brass screws into the holes of the thin plywood disk.
4. Secure the shade in place by screwing the small brass knurled thumb-turn nuts (F).
5. Turn the power supply on to complete installation.