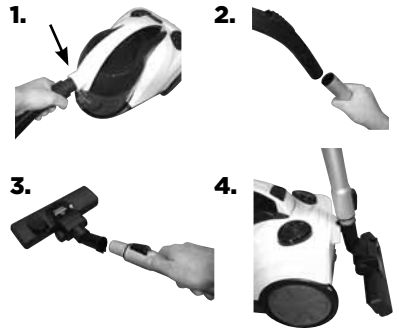


CLEANVIEW POWER™
1039, 1060, 1062

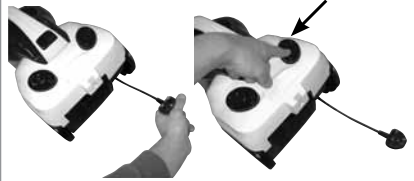
A



B



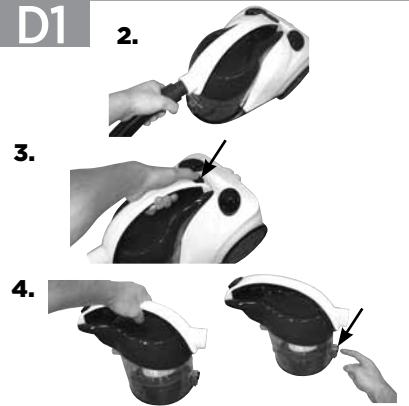
C1



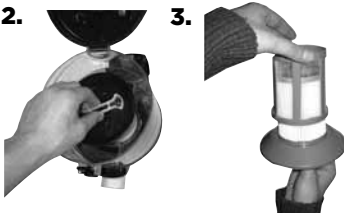
C2



D1



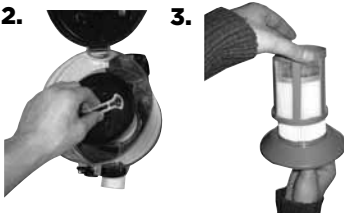
D2



D3



D2



D3



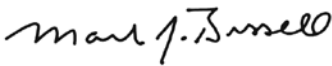
Thanks for buying a BISSELL vacuum

We're glad you purchased a BISSELL vacuum. Everything we know about floor care went into the design and construction of this complete, high-tech home cleaning system.

Your BISSELL vacuum is well made, and we back it with a limited two-year guarantee. We also stand behind it with a knowledgeable, dedicated Consumer Care department, so, should you ever have a problem, you'll receive fast, considerate assistance.





My great-grandfather invented the floor sweeper in 1876. Today, BISSELL is a global leader in the design, manufacture, and service of high-quality homecare products like your BISSELL vacuum.

Thanks again, from all of us at BISSELL.



Mark J. Bissell
Chairman & CEO

Symbol Definitions

	WARNING	AN ACTION OR ATTENTION IS NEEDED TO THIS AREA IN ORDER TO REDUCE THE RISK OF ELECTRIC SHOCK, FIRE, OR INJURY
	TIP	NOTE OR HINT WHICH IS NOT ESSENTIAL BUT MAY IMPROVE USABILITY
	GUIDE	READ USER GUIDE FOR COMPLETE SAFETY AND USER INSTRUCTIONS
	WEEE	DO NOT THROW THE APPLIANCE AWAY WITH THE NORMAL HOUSEHOLD WASTE AT THE END OF ITS LIFE, BUT HAND IT IN AT AN OFFICIAL COLLECTION POINT FOR RECYCLING. BY DOING THIS YOU WILL HELP TO PRESERVE THE ENVIRONMENT.



- » Before cleaning under low furniture, check area first for objects that might harm the unit or block the hose.
- » Hair, string and small objects can block the hose and tools. Check them occasionally for obstructions.
- » Use the air flow regulator to reduce air flow as needed when using the tools.
- » For maximum cleaning performance, check the filters often and clean or replace if necessary.

IMPORTANT SAFETY INSTRUCTIONS

READ ALL INSTRUCTIONS BEFORE USING YOUR VACUUM.

When using an electrical appliance, basic precautions should be observed, including the following:



WARNING

TO REDUCE THE RISK OF FIRE, ELECTRIC SHOCK, OR INJURY:

- » Use indoors only.
 - » For dry pick up only.
 - » Do not leave machine when it is plugged in.
 - » Do not service machine when it is plugged in.
 - » Do not use with damaged cable or plug.
 - » If appliance is not working as it should, has been dropped, damaged, left outdoors, or dropped into water, return it to a service agent.
 - » Do not handle unit with wet hands.
 - » Do not pull or carry by cable, use cable as a handle, close door on cable, pull cable around sharp corners or edges, run appliance over cable, or expose cable to heated surfaces.
 - » Do not unplug by pulling on cable. Unplug by grasping plug.
 - » Do not run appliance over cable.
 - » Do not handle plug or appliance with wet hands.
 - » Do not expose hair, loose clothing, fingers or body parts to openings or moving parts.
 - » Do not pick up hot or burning objects such as cigarettes, matches, or hot ashes.
 - » Do not pick up flammable or combustible materials (lighter fluid, petrol, kerosene, etc.) or use in the presence of explosive liquids or vapours.
- » Do not use appliance in an enclosed space filled with vapours given off by oil base paint, paint thinner, some moth proofing substances, flammable dust, or other explosive or toxic vapours.
 - » This appliance can be used by children aged from 8 years and above and persons with reduced physical, sensory and mental capabilities or lack of experience and knowledge if they have been given supervision or instruction concerning use of the appliance in a safe way and understand the hazards involved. Cleaning and user maintenance shall not be made by children without supervision.
 - » Children should be supervised to ensure that they do not play with the appliance.
 - » Remove plug from electrical socket before cleaning or maintaining the appliance.
 - » If the supply cable is damaged, it must be replaced by the manufacturer, its service agent or similarly qualified persons in order to avoid a hazard.
 - » Do not pick up toxic material (chlorine bleach, ammonia, drain cleaner, petrol, etc.).
 - » Do not use for any purpose other than described in this User's Guide.
 - » Use only manufacturer's recommended attachments.
 - » Do not use with any opening blocked; keep free of dust, lint, hair, and anything that may reduce air flow.
 - » Keep appliance on a level surface
 - » Turn off all controls before unplugging.
 - » Be extra careful when cleaning stairs.
 - » This appliance is provided with double insulation. Use only identical replacement parts.
 - » Pay close attention when working around children.

SAVE THESE INSTRUCTIONS FOR FUTURE USE

FOR OPERATION ON A 220-240 VOLT A.C. 50/60 HZ POWER SUPPLY ONLY.

This model is for household use only.

A Product View



Do not plug in your cleaner until you have completely assembled it per the following instructions and are familiar with all instructions and operating procedures.

- | | |
|---------------------------|---|
| 1 Handle | 10 Emptying Button |
| 2 Air Flow Regulator | 11 Brush Switch |
| 3 Extension Wand | 12 Multi-Surface Floor Nozzle |
| 4 Hose | a. Up / b. Down |
| 5 Carry Handle | 13 Combination Crevice Tool/
Dusting Brush |
| 6 Dirt Cup Release Button | 14 TurboBrush™ Tool |
| 7 Hose Connector | 15 Hard Floor Brush |
| 8 Dirt Cup Filter | 16 Turbine Nozzle |
| 9 Easy Empty™ Dirt Cup | |

B Assembly

1. Connect hose to vacuum by inserting hose connector on the end of the hose into the suction inlet. Make sure the hose is positioned so the tabs on the hose connector line up with the notches on the suction inlet. Once inserted into the suction inlet, turn counter clockwise to lock into place.
2. Connect hose handle to the end of the extension wand and twist slightly to tighten.
3. Connect floor nozzle to the end of the extension wand and twist slightly to tighten.
4. Once assembled, you can store your vacuum by inserting the storage clip (located on the back of the floor nozzle) into the storage slot on the rear of the vacuum.

Colours may vary from models shown.

C Operations

Power cord

The power cord is located at the rear of the vacuum. Gently pull out the power cord, watching for the yellow line. Stop pulling the power cord once the yellow line is visible. There is also a red line, which indicates the end of the usable cord. Do not pull the power cord out beyond the red line.



Before using your vacuum, make sure that the dirt cup and all filters are in place. Do not operate your vacuum without the dirt cup and filters.



Be careful to avoid injury as cord retracts very quickly.



Plastic film can be dangerous. To avoid danger of suffocation, keep away from babies and children.

C1 - Automatic cord rewind

Your vacuum is equipped with an automatic cord rewind. When cleaning is finished, press the power button OFF and grasp the plug to disconnect from the electrical outlet. Hold the plug and press the automatic cord rewind button to rewind the cord automatically.

C2 - Power button

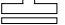
Turn the power ON or OFF by pressing lightly downward on the power button (Ⓢ).

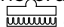
Special tools

Your BISSELL CleanView Power vacuum is not only a powerful carpet and rug vacuum cleaner, it's also a versatile bare floor and above floor vacuum cleaner when you select one of the special tools.

Floor nozzle

Use to vacuum carpets, rugs and bare floors. Swivel head turns to get into tight spaces and fits under cabinets.

1. To vacuum carpets and rugs, push the brush switch to the carpet position . This will pull the brushes up into the floor nozzle.

2. To vacuum bare floors, push the brush switch to the bare floor position . This will extend the brushes down from the floor nozzle.

Combination crevice tool/dusting brush

Use the crevice tool in tight, narrow spaces. Use the dusting brush to clean curtains, draperies, cushions and fabrics.

TurboBrush™ Tool

(1060, 1062 series only)

Use rotating brush action for small, flat areas such as cushions and beds.

NOTE: Press down gently and pull toward you in a raking motion. Too much pressure will cause the brush to stop rotating.

Turbine Head (1062 series only)

Use to vacuum carpets and rugs. Swivel head turns to get into tight spaces and fits under tight cabinets. Easy-to-remove nozzle window for cleaning threads and debris from the brush roll. Squeeze the 2 small tabs at the side of the foot to release the window. To replace, align the window tabs at the top with the 2 openings of the foot and push into place until you hear a snap and the window is securely in place.

Hard Floor Brush (1062 series only)

Specially designed to vacuum bare floors.

Air flow regulator

Open the air flow regulator by sliding the regulator down towards the extension wand to an open position. This will reduce the suction power for vacuuming delicate fabrics.

For full suction power, close the air flow regulator by sliding the regulator up to the closed position.

D Care & Storage

D1 - Empty the dirt cup

Empty the dirt cup as soon as the dirt reaches the "FULL" lines on the sides of the dirt cup.

1. Unplug the vacuum from the electrical outlet.
2. Remove the hose by turning the hose connector counter clockwise and pulling it out from the suction inlet. Set hose aside.
3. Press the dirt cup release button on the carry handle and lift up to remove the dirt cup.
4. Choose an emptying method. Method #2 is recommended for allergy sufferers.

Method #1 – Hold the dirt cup over a rubbish bin and push the emptying button to open the bottom. Close the bottom after the dirt empties.

Method #2 – Place a plastic bag over the bottom of the dirt cup. Push the emptying button through the plastic to open the bottom. After the dust settles, close the bottom and remove the bag to discard.

5. Replace the dirt cup by placing it back into the vacuum and pushing down on the carry handle until it snaps back into place.



To reduce the risk of electric shock, turn power switch off and disconnect plug from electrical socket before performing maintenance or care.



Do not operate cleaner with damp or wet filters or without all filters in place.

This product is intended for household use only and not for commercial or industrial use. Vacuuming of dust from products like plaster, concrete or ashes will damage the motor and void the warranty.

D2 - Cleaning the dirt cup filter

Use only BISSELL replacement filters in your CleanView Power.

1. Unplug the vacuum from the electrical outlet.
2. The dirt cup filters can be reached by removing the dirt cup from the vacuum, grasping the handle on the bottom of the dirt cup filter assembly and turning counter clockwise to unlock. Pull straight down to remove.
3. Remove the dirt cup filter screen by grasping the bottom of the filter frame base and pulling straight up.
4. Parts separate by slowly pulling vertically upwards on the filter. Do not use excessive force.
5. The dirt cup filter screen and dirt cup filter can be hand washed in cold water with a mild detergent. Rinse well and air dry thoroughly before placing back onto the filter frame base.
6. Attach the dirt cup filter back onto the filter frame base by lining up the tabs on the filter base with the notches on the dirt cup filter and turning clockwise to lock back into place.
7. Attach the dirt cup filter screen back on to the dirt cup filter by sliding it down over the dirt cup filter, making sure that the tabs on the bottom of the dirt cup filter screen line up with the notches on the dirt cup filter.
8. Insert the dirt cup filter assembly back into the dirt cup by lining up the tabs on the top of the dirt cup filter assembly with the notches inside the top of the dirt cup and turning the handle on the bottom of the dirt cup filter assembly clockwise to lock into place.

D3 - Replacing the post-motor filter

The post-motor filter assists in the filtration process to return cleaner air to the room. Use only BISSELL replacement filters in your CleanView Power.

1. Unplug the vacuum from electrical outlet.
2. Remove the filter door (located on the back of the vacuum) by pushing down on the tab and pulling out and away from the vacuum.
3. The post-motor filter can be hand washed in cold water with a mild detergent. Rinse well and air dry thoroughly before placing back into the vacuum.
4. Replace the filter door by placing the tabs on the bottom of the filter door into the notches on the bottom of the post-motor filter compartment and pushing the tab forward back into the vacuum to lock into place.

Clearing clogs from the dirt cup

1. Unplug the vacuum from electrical outlet.
2. Remove the dirt cup from the vacuum, following steps 1-3 of Emptying the dirt cup on page 6.
3. Remove the dirt cup filter assembly from the dirt cup, following step 2 of Clean the dirt cup filter on page 6.
4. Tap the dirt cup filter assembly over a garbage container to remove any dirt or debris from the dirt cup filter screen that surrounds the dirt cup filter.











5. Reach up into the dirt cup to clear any dirt or debris from the dirt cup.

6. Check to see if there are any clogs in the suction inlet.

7. After clearing any dirt or debris from the dirt cup, replace the dirt cup filter assembly back in the dirt cup following step 8 of Cleaning the dirt cup filter on page 6.

Replacement Parts

These items are available for purchase as accessories for your BISSELL vacuum:
To purchase visit www.BISSELL.com.

PART #	PART NAME		PART #	PART NAME	
160-1459	Dirt Cup Filter Screen		160-1460	Dirt Cup Filter	
160-1461	Post-Motor Filter		160-1462	Floor Nozzle	
203-1537	Hose with Handle		203-1579	Extension Wands (2)	
203-1539	Combination Crevice Tool/ Dusting Brush		160-1465	TurboBrush™ Tool	
160-1463	Turbine Floor Tool		160-1464	Hard Floor Tool	

Consumer Guarantee

This Guarantee only applies outside of the USA and Canada. It is provided by BISSELL International Trading Company BV ("BISSELL").

This Guarantee is provided by BISSELL. It gives you specific rights. It is offered as an additional benefit to your rights under law. You also have other rights under law which may vary from country to country. You can find out about your legal rights and remedies by contacting your local consumer advice service. Nothing in this Guarantee will replace or lessen any of your legal rights or remedies. If you need additional instruction regarding this Guarantee or have questions regarding what it may cover, please contact BISSELL Consumer Care or contact your local distributor.

This Guarantee is given to the original purchaser of the product from new and is not transferable. You must be able to evidence the date of purchase in order to claim under this Guarantee.

Limited Two-Year Guarantee

Subject to the *EXCEPTIONS AND EXCLUSIONS identified below, BISSELL will for two years from the date of purchase by the original purchaser repair or replace (with new or remanufactured components or products), at BISSELL's option, free of charge, any defective or malfunctioning part or product.

BISSELL recommends that the original packaging and evidence of the date of purchase be kept for the duration of the Guarantee period in case the need arises within the period to claim on the Guarantee. Keeping the original packaging will assist with any necessary re-packaging and transportation but is not a condition of the Guarantee.

If for your product is replaced by BISSELL under this Guarantee, the new item will benefit from the remainder of the term of this Guarantee (calculated from the date of the original purchase). The period of this Guarantee shall not be extended whether or not your product is repaired or replaced.

*EXCEPTIONS AND EXCLUSIONS FROM THE TERMS OF THE GUARANTEE

This Guarantee applies to products used for personal domestic use and not commercial or hire purposes. Consumable components such as filters, belts and mop pads, which must be replaced or serviced by the user from time to time, are not covered by this Guarantee.

This Guarantee does not apply to any defect arising from fair wear and tear. Damage or malfunction caused by the user or any third party whether as a result of accident, negligence, abuse, neglect, or any other use not in accordance with the User Guide is not covered by this Guarantee.

An unauthorised repair (or attempted repair) will void this Guarantee whether or not damage has been caused by that repair/attempt.

Removing or tampering with the Product Rating Label on the product or rendering it illegible will void this Guarantee.

SAVE AS SET OUT BELOW BISSELL AND ITS DISTRIBUTORS ARE NOT LIABLE FOR ANY LOSS OR DAMAGE THAT IS NOT FORESEEABLE OR FOR INCIDENTAL OR CONSEQUENTIAL DAMAGES OF ANY NATURE ASSOCIATED WITH THE USE OF THIS PRODUCT INCLUDING WITHOUT LIMITATION LOSS OF PROFIT, LOSS OF BUSINESS, BUSINESS INTERRUPTION, LOSS OF OPPORTUNITY, DISTRESS, INCONVENIENCE OR DISAPPOINTMENT. SAVE AS SET OUT BELOW BISSELL'S LIABILITY WILL NOT EXCEED THE PURCHASE PRICE OF THE PRODUCT.

BISSELL DOES NOT EXCLUDE OR LIMIT IN ANY WAY ITS LIABILITY FOR (A) DEATH OR PERSONAL INJURY CAUSED BY OUR NEGLIGENCE OR THE NEGLIGENCE OF OUR EMPLOYEES, AGENTS OR SUBCONTRACTORS; (B) FRAUD OR FRAUDULENT MISREPRESENTATION; (C) OR FOR ANY OTHER MATTER WHICH CANNOT BE EXCLUDED OR LIMITED UNDER LAW.

Consumer Care

If your BISSELL product should require service or to claim under our Limited Two-Year Guarantee, please visit:

Website or E-mail:
www.BISSELL.com

For UK inquiries:

Telephone: 0844.888.6644

Monday - Thursday 9am - 5pm

Friday 9am - 4pm

BISSELL Homecare (Overseas) Inc.

Ground Floor

226 Berwick Avenue

Slough, Berkshire, SL1 4QT

United Kingdom

Visit the BISSELL website: www.BISSELL.com

When contacting BISSELL, have model number of cleaner available.

Please record your Model Number: _____ Please record your Purchase Date: _____

NOTE: Please keep your original sales receipt. It provides proof of the date of purchase in the event of a Guarantee claim. See Guarantee for details.



©2015 BISSELL Homecare, Inc.
Grand Rapids, Michigan
All rights reserved. Printed in China
Part Number 160-1600 Rev 3/15
Visit our website at: www.BISSELL.com