

Model: F20MLP-SS/F20MLP-SY/
F30MLP-SS/F30MLP-SY/ F30MLP-RY

⚠ WARNING

- Only installed by a qualified technician in accordance with national and local electrical codes and the following instructions.
- Check to make sure the device's type and rating are suitable for the application.
- In case of risk of electric shock, disconnect the power before installing.
- Terminal capacity: 12AWG to 10AWG for 20Amp; 10AWG for 30Amp

Cable Color Scheme

G = Green or Green/Yellow

W = White

X, Y, Z or Blank = Other than White, Green or Green/Yellow

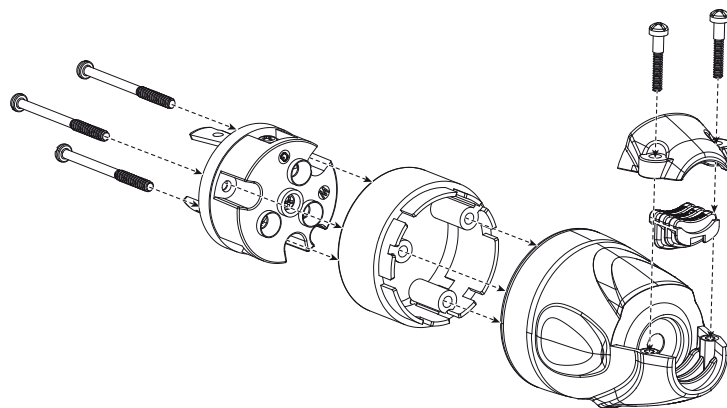
Strip Dimensions of Conductor and Jacket

The Strip Length of Conductor: 16mm (5/8 Inches)

The Strip Length of Jacket: 40mm (1½ Inches)

Installation

- Strip conductor and jacket using strip gauge on device.
- Loosen terminal screws.
- Insert conductors fully into copper terminals.
NOTE: Take caution that there are no stray wire strands. Use copper conductors only.
- Tighten terminal screws using 14~16 in-lbs torque.





Furrion Innovation Center & Institute of Technology

● 52567 Independence Ct., Elkhart, IN 46514, USA ● Toll free:1-888-354-5792

● Email: support@furrion.com

©2007-2018 Furrion Ltd. Furrion® and the Furrion logo are trademarks licensed for use by Furrion Ltd. and registered in the U.S. and other countries.

FURRION.COM

IG-FET00002 V4.0