

FURRION

Soundbar Speakers

Operating and Installation Instructions



This manual is for use with

**Furrion FSBT43S-BL
Soundbar Speakers**

Welcome

Furrion® FSBT43S-BL Soundbar Speakers

Thanks you for purchasing Furrion FSBT43S-BL soundbar speakers.

Before installation and use, please read all instructions carefully.
This will ensure safe use and reduce the risk of injury.

Contents

IMPORTANT SAFETY INSTRUCTION	3
UNPACKING	4
EQUIPMENT YOU WILL NEED	4
STEPS OF INSTALLATION	5
- Before you make any holes	
- Drill a pilot hole for testing the wall space	
PREPARE THE WALL FOR INSERTING THE SPEAKER	6-7
- Measure and mark the hole to be cut	
- Attaching rectangular grille frames	
CIRCUIT DIAGRAM	7

! IMPORTANT SAFETY INSTRUCTION

Please read all of the information in this operating manual, including all safety, operating, and maintenance information. To avoid the potential risk of fire, electric shock, or injury to persons, users should follow the directions and warnings in this manual.

1. Read these instructions for all components before using this product.
2. Keep these instructions for future reference.
3. Heed all warnings on the product and in the owner’s guide.
4. Follow all instructions.
5. Do not block any ventilation openings. Install in accordance with the manufacturer’s instructions.
6. Only use attachments/accessories specified by the manufacturer.

UNPACKING

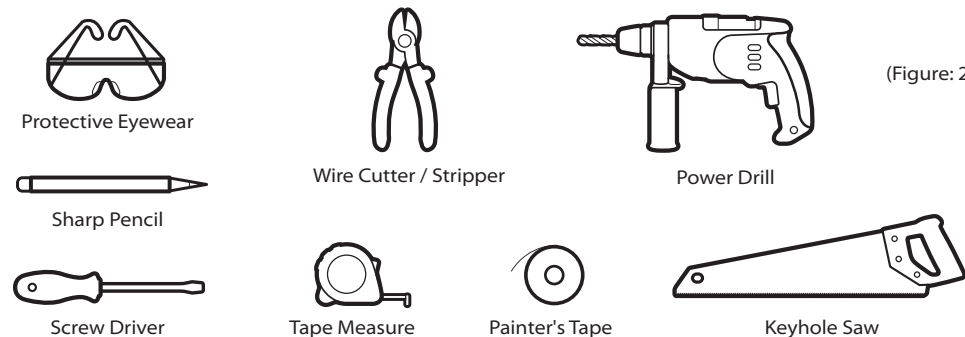
Carefully unpack the speakers. Check to be sure the carton includes all the parts shown below. If any part of the speaker pair appears damaged, do not use them. Notify your Furrion dealer immediately.

Note: Now is a good time to find the date code on the back of each speaker and copy the numbers onto your warranty card.



(Figure: 1)

EQUIPMENT YOU WILL NEED



(Figure: 2)

- A carpenter's level is suggested for use when installing the speakers in a wall
- Speaker cord specifications are provided in the reference section of this guide
- Painter's tape or other tape with light adhesive that will not damage paint or wallpaper
- Cutting tool- For drywall: a keyhole saw, drywall saw, rotary cutting tool, or jigsaw
For plaster and lath: a saber saw or a rotary cutting tool

STEPS TO INSTALLING

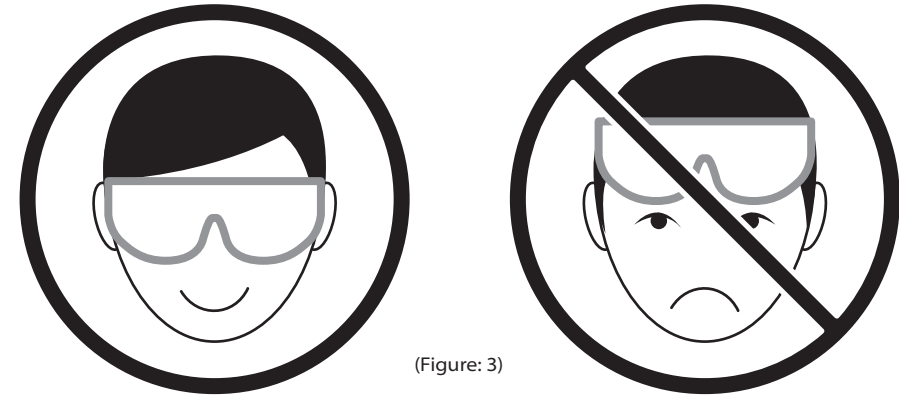
Before you make any holes

Be sure you have read and understand the considerations provided in "Important Safety Instruction" starting on page 2, so you can proceed with confidence.

CAUTION: If you are unsure of your ability to complete this process, contact a professional installer.

Drill a pilot hole for testing the wall space

Before you make a large cut into the wallboard, check the space by probing behind the wall or ceiling through a small pilot hole. Time spent now can help ensure a successful installation.



(Figure: 3)

WARNING: Use eye protection and be sure to observe all safety precautions while using a drill or cutting tool

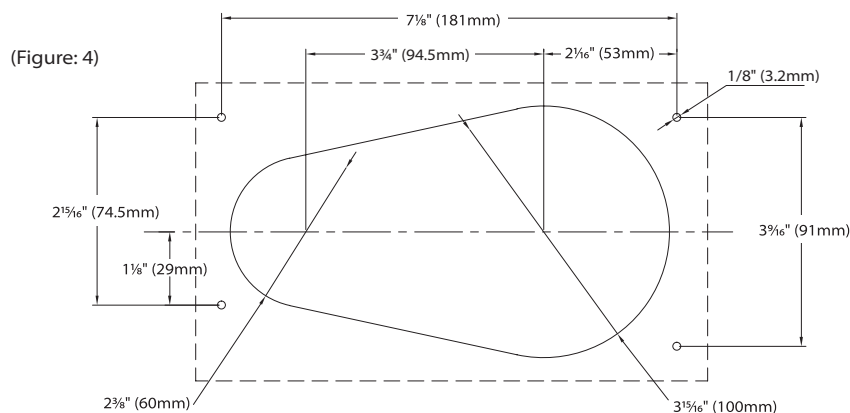
Caution against drilling without eye protection

PREPARE THE WALL FOR INSERTING THE SPEAKER

Measure and mark the hole to be cut

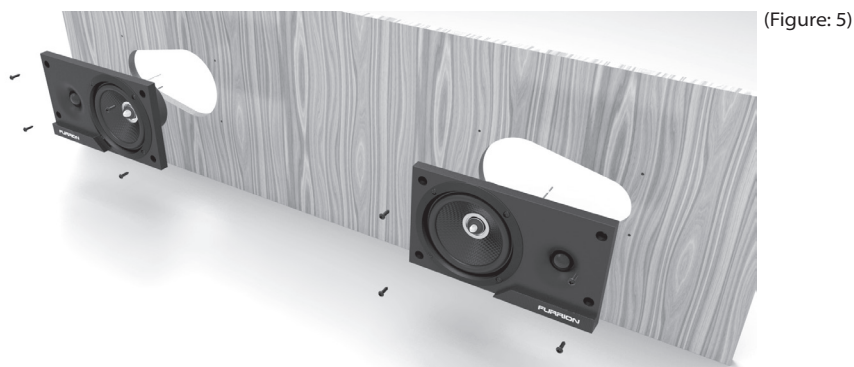
You need a carpenter's level, a sharp pencil, and optional tape with the template to complete this step.

1. Position the template carefully over the pilot hole where you want to install one speaker.
2. Make sure the template is level (Figure 4).



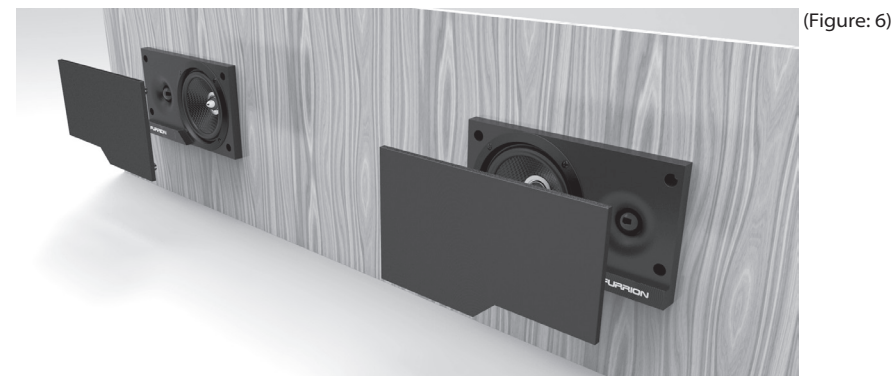
Attaching rectangular grille frames

1. Line up the curved edge of the grille with the curve over and press that edge into the speaker frame first (Figure 5).
2. Press the top of the grille firmly into place until you feel some resistance. When the grille lines up flush with the frame of the speaker, it is seated properly.



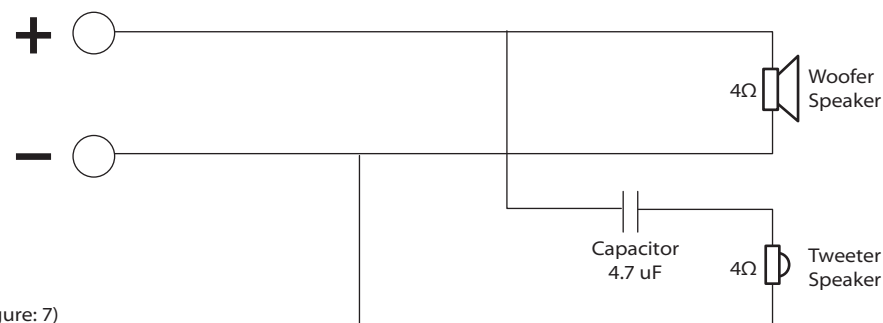
Drill two holes (refer to figure 4). Connect the speaker wires to the amplifier and mount the speakers on the wall

PREPARE THE WALL FOR INSERTING THE SPEAKER



Snapping the grille into place

CIRCUIT DIAGRAM



(Figure: 7)



FURRION

Furrion Innovation Center & Institute of Technology

- 52567 Independence Ct., Elkhart, IN 46514, USA • Toll free: 1-888-354-5792
- Email: info@furrion.com

©2007-2017 Furrion Ltd. Furrion and the Furrion logo are trademarks licensed for use by Furrion Ltd. and registered in the U.S. and other countries.

FURRION.COM

IM-FSBT43S-BL V1.3