

DV5700

# 180W DVD Entertainment System with Bluetooth



## Main Features



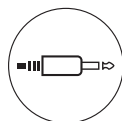
CLIMATESMART™



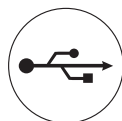
VIBRATIONSMART™



SIGNALSMART™



AUXILIARY  
IN



USB  
INTERFACE

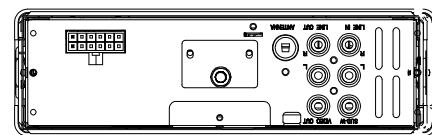
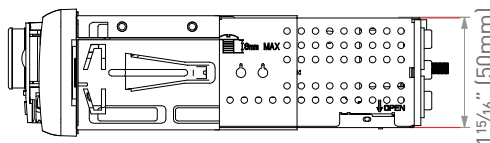
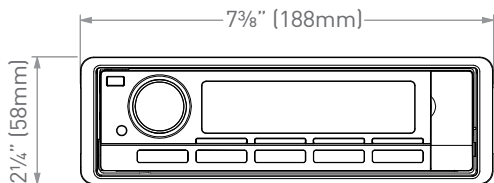
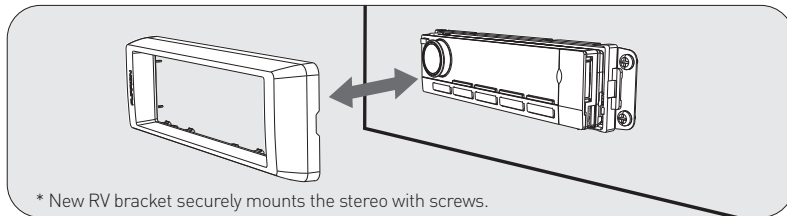
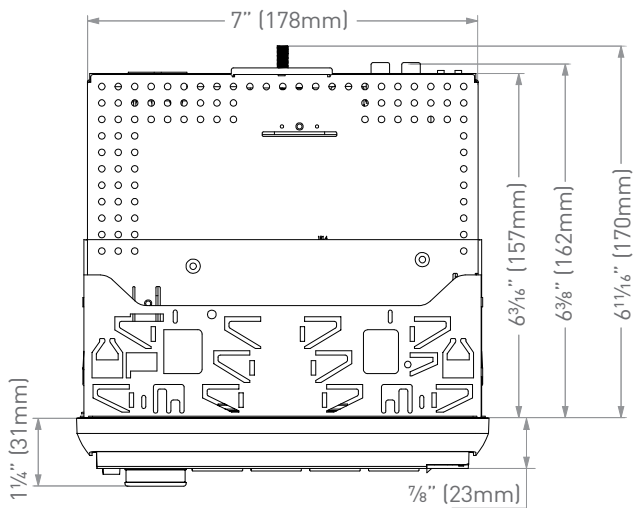


MEMORY CARD  
READER



SUBWOOFER  
OUT

FURRION



## Specifications

Din Type	1-din
Front Panel Type	Detachable
Supported Disc Format	CD & DVD
Supported Media Format	MP3/WMA/AVI
Tuner Type	AM & FM
Number of Preset Stations	30
RDS	•
USB	✓
USB Charge (500mA)	✓
Card Reader	✓
Memory Card Support	SD/MMC
AUX-IN	✓
AUX-IN Video Support	✓
HDMI-IN	•
Bluetooth	2.1
Display Type	LCD (VA Segment)
Display Size (inch)	3.7"
Display Backlight Color	White
Key Illumination Color	White
Rotary Volume Control	✓
Accessories Included	Remote Control with Batteries Mounting Bracket 12-pin Connecting Wires Manual Warranty Card
Power Output (Watt)	4 x 45W (MAX)
Power Connector Type	12-pin

## Inputs & Outputs

# of RCA (Audio LR) Inputs, Rear Panel	1
# of RCA (Audio LR) Outputs, Rear Panel	1
# of Video Inputs, Rear Panel	•
# of Video Outputs, Rear Panel	1
# of Subwoofer Outputs, Rear Panel	1
# of HDMI Outputs, Rear Panel	•
# of Optical Audio Inputs, Rear Panel	•
# of Coaxial Audio Inputs, Rear Panel	•
# of Camera Inputs, Rear Panel	•

## Dimensions & Weight

Individual Packaging Dimensions (W x H x D)	8.46 x 9.25 x 3.35" (215 x 235 x 85mm)
Net Weight (lbs/kg)	2.9/1.32
Gross Weight (lbs/kg)	3.5/1.58

## Master Carton

Quantity Per Box (pcs)	5
Master Carton Dimensions (W x H x D)	17.44 x 10.04 x 9.06" (443 x 255 x 230mm)
Master Carton Gross Weight (lbs/kg)	17.4/7.9

