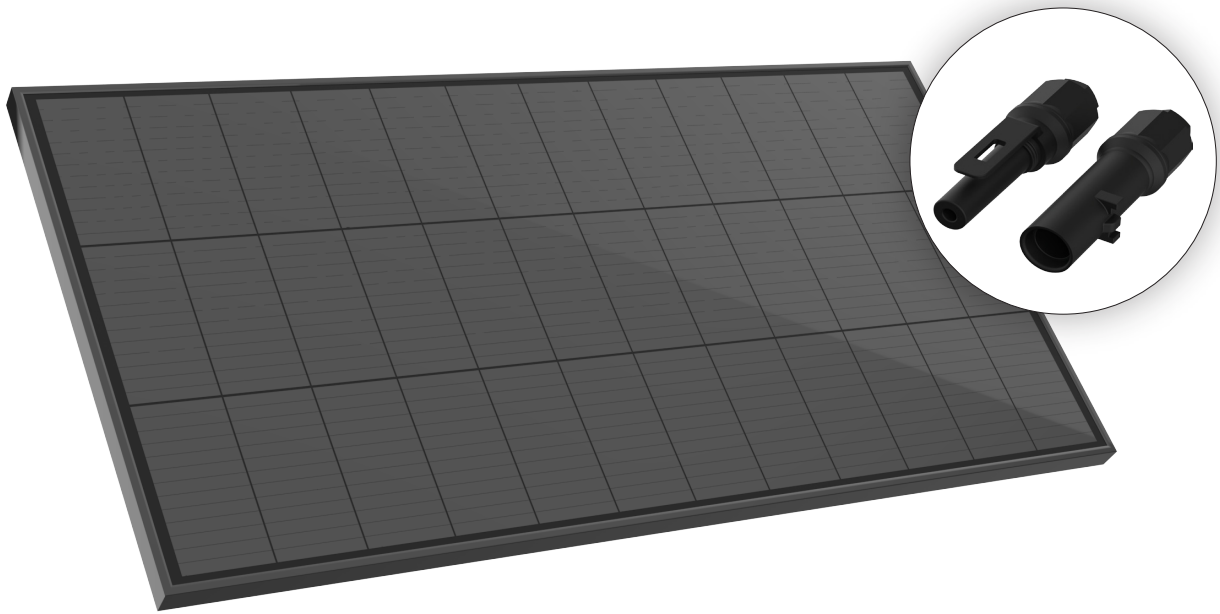


FSFP16MW-BL

165W Rigid Solar Panel



Main Features



POWER



HIGH
EFFICIENCY



WITHSTANDS
HAIL, HIGH WIND AND
SNOW LOADS



WATERPROOF

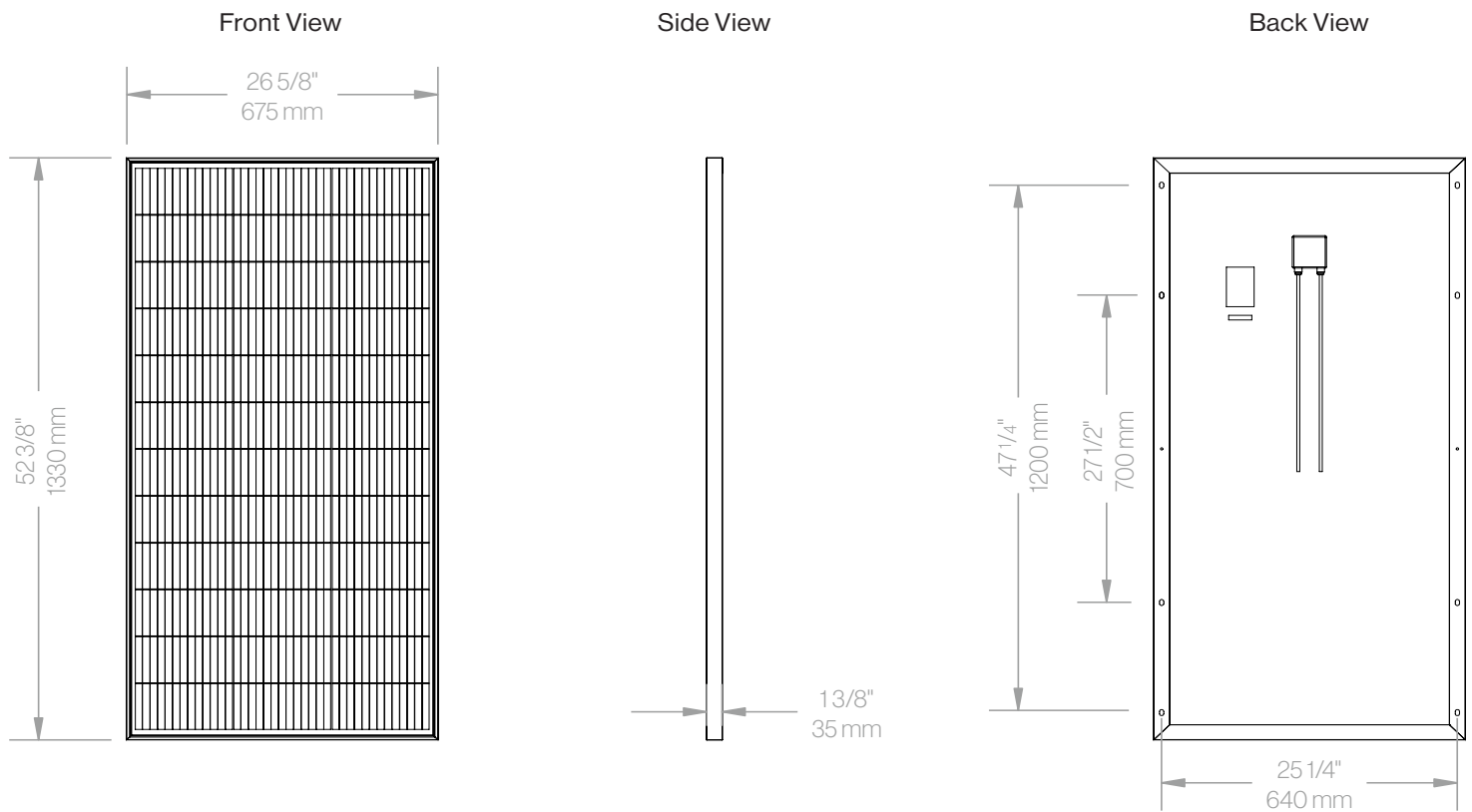


VIBRATIONSMART™



CLIMATESMART™

FURRION



Note: Controller, Mounting Bracket Kit, Rooftop Connection Box and Extension Cable Pair are sold separately.

Specifications

Maximum power (Pmax)	165W
Max Power Voltage (Vmp)	19.4V
Max Power Current (Imp)	8.5A
Open Circuit Voltage (Voc)	23.83V
Short Circuit Current	8.91A
Power Tolerance	± 3%
Series Fuse Rating	20A
Temperature Co-efficient (Power)	-0.41%/ °C
Temperature Co-efficient (Voltage)	-0.30%/ °C
Temperature Co-efficient (Current)	+0.06%/ °C
NOCT (Air 25°C; Sun 1.0kW/m²)	45±2°C
Cable	2.5mm² PV1-F, 35.4"
Connector	Furrion Solar connectors
Operation Temperature	-40°F to 185°F (-40°C to 85°C)
IP rating	IP65

Dimensions/Weight

Product Dimensions (W x H x D)	26 5/8" x 52 3/8" x 1 3/8" 675 x 1330 x 35mm
Packaging Dimensions (W x H x D)	27 3/8" x 53 1/8" x 2" 695 x 1350 x 50mm
Gross Weight (lbs/kg)	24.25 / 11kg
Net Weight (lbs/kg)	21lbs / 9.7kg

