

Imperial XLS Built-In Cabinet

957484 LP / 957487 NG

POWER FEATURES

- 60,000 BTU stainless steel Dual-Tube™ burner system
- 10,000 BTU commercial grade side burner
- 15,000 BTU stainless steel rear rotisserie burner
- Premium rotisserie kit included

COOKING SYSTEM

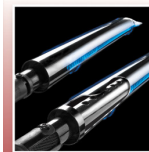
- 500 sq. in. primary cooking surface - left
- 250 sq. in. primary cooking surface - right
- 90 sq. in. porcelain coated warming rack - right
- 195 sq. in. porcelain coated warming rack - left
- Heavy duty cast stainless steel cooking grids
- Stainless steel Flav-R-Wave™ cooking system
- Six stainless steel Dual-Tube™ burners
- Linear-Flow™ valves with 180° Sensi-Touch™ control
- Sure-Lite™ electronic ignition system
- Deluxe Accu-Temp™ thermometer

DESIGN AND STYLING

- Stainless steel hood panel with rugged cast aluminium end caps
- Stainless steel cookbox with cast aluminium end caps
- Stainless steel slide-out drip tray
- Rigid steel cabinet with stainless steel doors and drawers
- Pull out tank drawer (LP model)
- Built in control panel and oven lights

WARRANTY

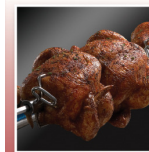
- Limited lifetime warranty on cookbox
- 10 years on stainless steel Dual-Tube™ burner system
- 5 years on stainless steel Flav-R-Wave™ cooking system
- 2 years on remaining parts and paint



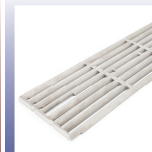
Stainless Steel
Dual-Tube™
Burner System



Commercial Grade
Side Burner



Premium
Rotisserie Kit



Heavy Duty Cast
Stainless Steel
Cooking Grids



Slide-Out Grease
Tray System