

Baron S490

922584 LP / 922587 NG

POWER FEATURES

- 40,000 BTU stainless steel Dual-Tube™ burner system
- 10,000 BTU powerful side burner
- 15,000 BTU stainless steel rear rotisserie burner
- Premium rotisserie kit included

COOKING SYSTEM

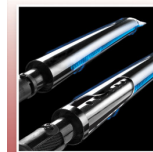
- 644 sq. in. total cooking surface including porcelain coated warming rack
- 444 sq. in. primary cooking surface
- Heavy duty cast iron cooking grids
- Stainless steel Flav-R-Wave™ cooking system
- Four stainless steel Dual-Tube™ burners
- Linear-Flow™ valves with 180° Sensi-Touch™ control
- Sure-Lite™ electronic ignition system
- Deluxe Accu-Temp™ thermometer

DESIGN AND STYLING

- Stainless steel hood panel with rugged cast aluminium end caps
- Stainless steel cookbox with cast aluminium end caps
- Stainless steel drop down side shelves
- Enclosed cabinet with stainless steel cabinet doors
- Stainless steel control panel
- Heavy-duty locking swivel casters with level setting

WARRANTY

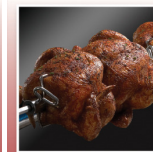
- Limited lifetime warranty on cookbox
- 10 years on stainless steel Dual-Tube™ burner system
- 3 years on stainless steel Flav-R-Wave™ cooking system
- 2 years on remaining parts and paint



Stainless Steel Dual-Tube™ Burner System



Powerful Side Burner



Premium Rotisserie Kit



Heavy Duty Cast Iron Cooking Grids



Drop Down Side Shelves