

The Bravo fire pit is handmade by Dekko in North America. Ships with your choice of NG or LP burner, one decorative aggregate option and chrome On/Off key.

Size: 32"W x 32"D x 13" H*
 Certification: CSA/UL Approved



* 16" H for Electronic Ignition

	Manual Ignition	Electronic Ignition
BTU/Hr	65,000	65,000
Weight	115 lbs	115 lbs
Fuel Options	NG/LP	NG/LP

Optional Accessories:

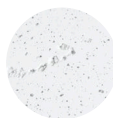
Propane Tank Cover 16"W x 16"D x 21"H

Glass Wind Guard 23"D x 6"H

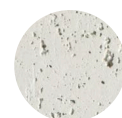
Vinyl Weather Cover

Powder Coated Aluminium Table Top 32"W x 32"D

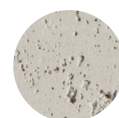
Colour Options



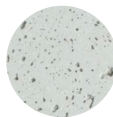
NATURAL



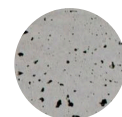
LIMESTONE



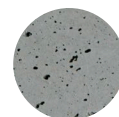
CLAY



ASH



SANDSTONE



CHARCOAL

Decorative Aggregate Options



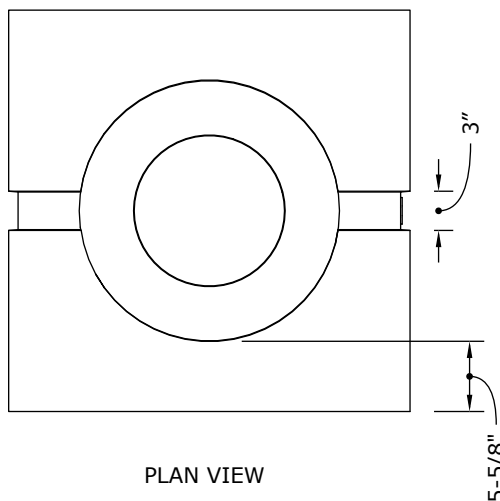
IVORY BEACH
STONE



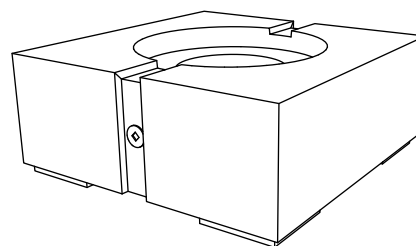
SLATE BEACH
STONE



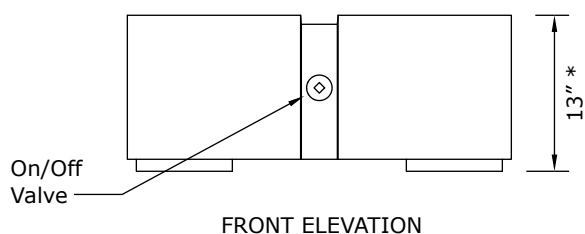
BLACK LAVA
ROCK



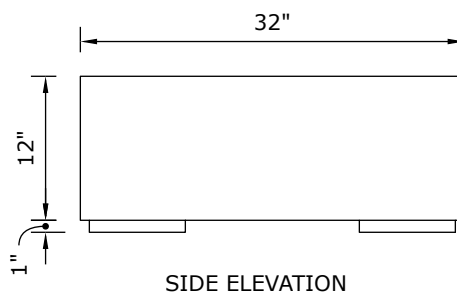
PLAN VIEW



PERSPECTIVE VIEW



FRONT ELEVATION

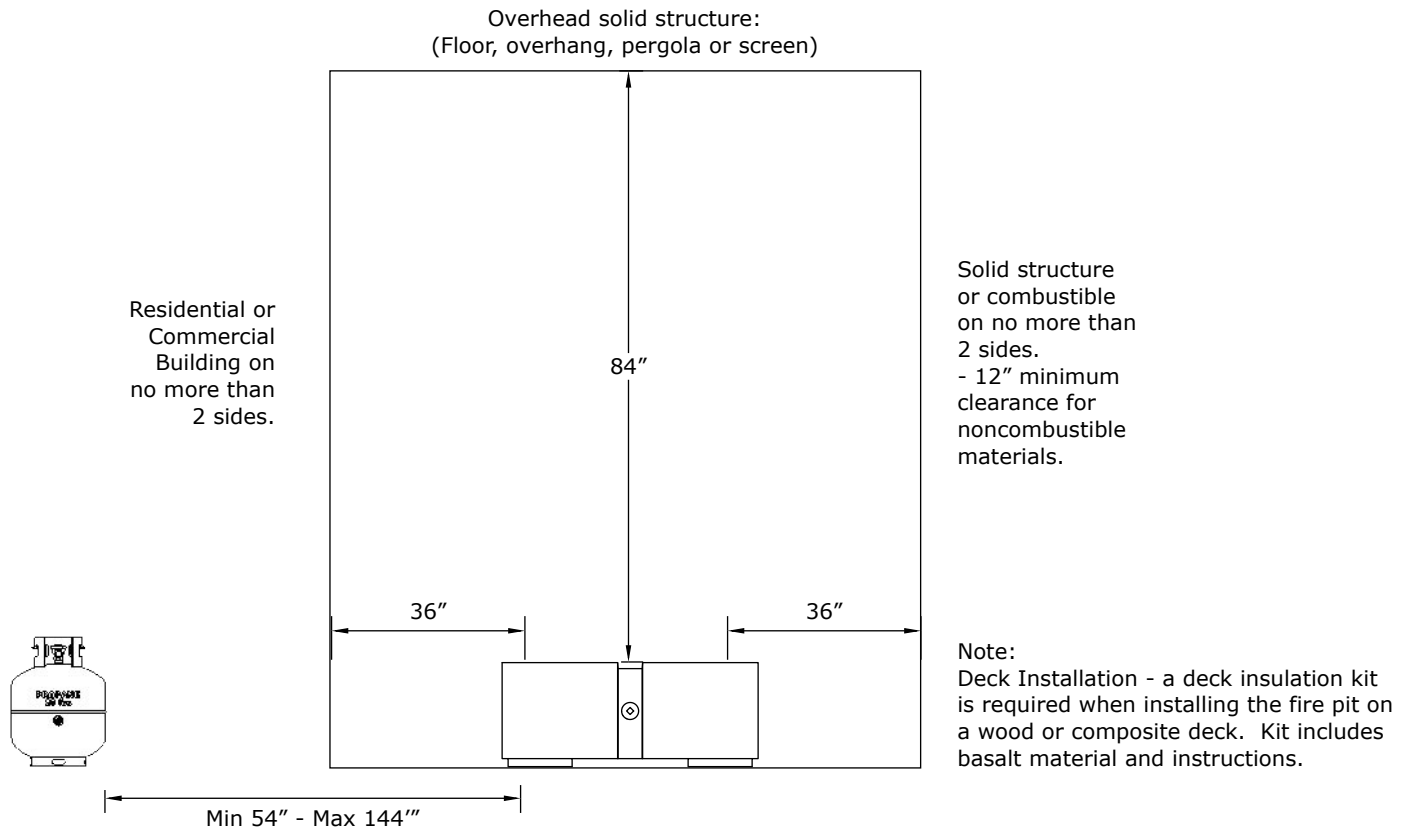


SIDE ELEVATION

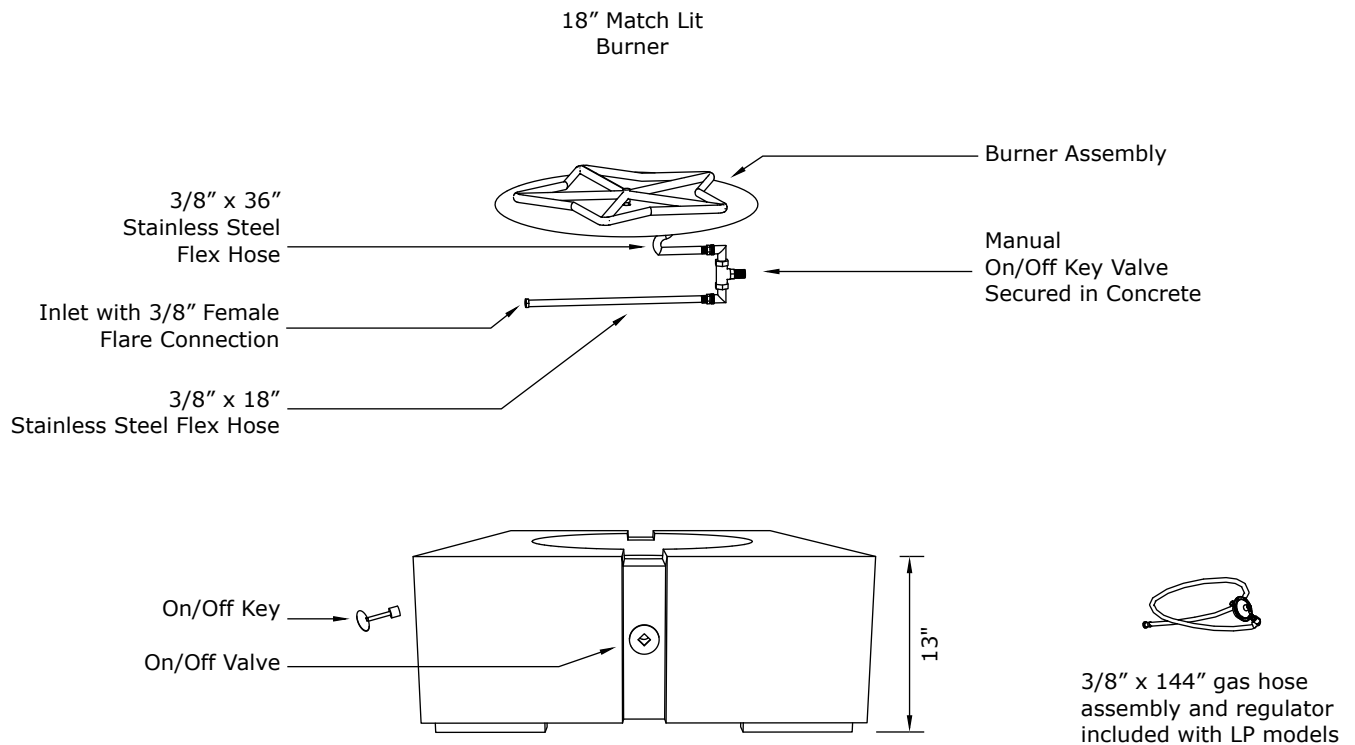
NOTE: 16" high for Electronic Ignition



Clearances

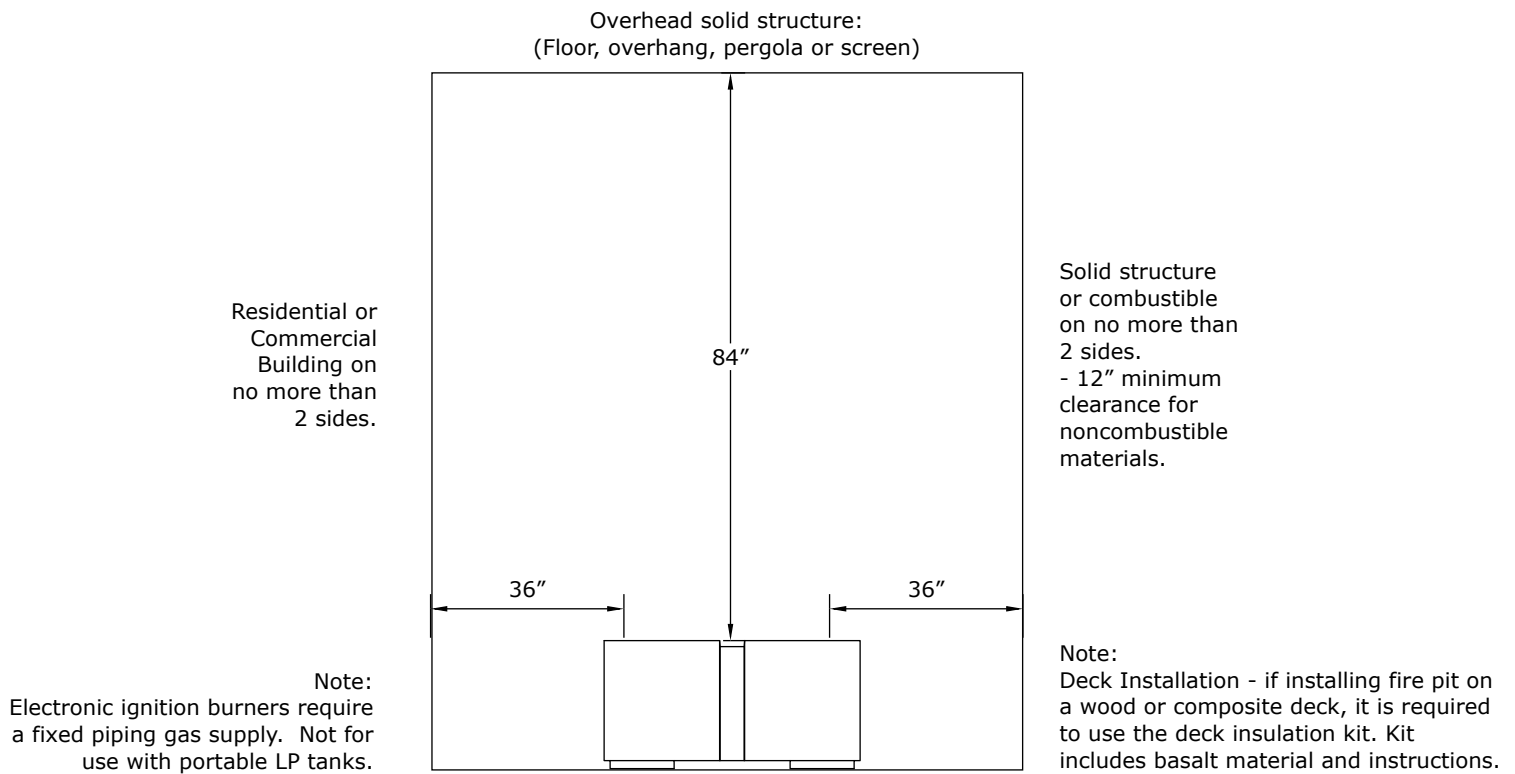


Burner Assembly





Clearances

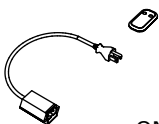
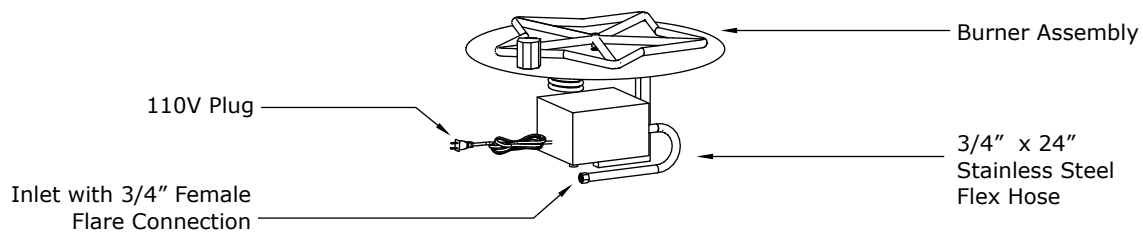


Burner Assembly

Electrical:

120V Outdoor receptacle required.
Must be installed and grounded in accordance with local codes.

18" Electronic Ignition
Burner



ON/OFF remote
control included
with Electronic
Ignition models

