

TRAVELQ™ 285

TQ285-BL-1 BLUE



FEATURES

- » 12,000 BTU'S
- » 2 BURNERS
- » 285 IN² TOTAL COOKING AREA

OPTIONS / ACCESSORIES



Dual Stainless Steel Burners for Direct or Indirect Grilling



Porcelainized Cast Iron **Iconic WAVE™ Cooking Grids**



ACCU-PROBE™ Temperature Gauge



Ergonomic Control Knobs



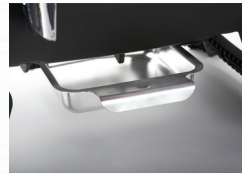
High-Top Lid for **Versatile Grilling**



Instant **JETFIRE™** Ignition



Folding Legs for Storage



Easy Access Aluminum Grease Tray



PREMIUM FITTED COVER #61286



STAINLESS STEEL 3 PIECE TOOLSET #70024