

The Sonoma fire pit is handmade by Dekko in North America. Ships with your choice of NG or LP burner, one decorative aggregate option and chrome On/Off key.

Size: 72"W x 33"D x 16"H
 Certification: CSA/UL Approved

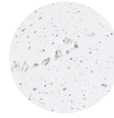


	Manual Ignition	Electronic Ignition
BTU/Hr	65,000	100,000
Weight	215 lbs	215 lbs
Fuel Options	NG/LP	NG/LP

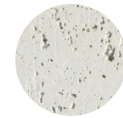
Optional Accessories:

- Propane Tank Cover 16"W x 16"D x 21"H
- Glass Wind Guard 55"W x 15"D x 6"H
- Vinyl Weather Cover
- Powder Coated Aluminium Table Top 72"W x 33"D

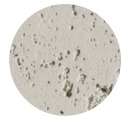
Colour Options



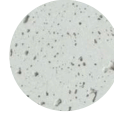
NATURAL



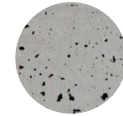
LIMESTONE



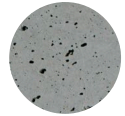
CLAY



ASH



SANDSTONE



CHARCOAL

Decorative Aggregate Options



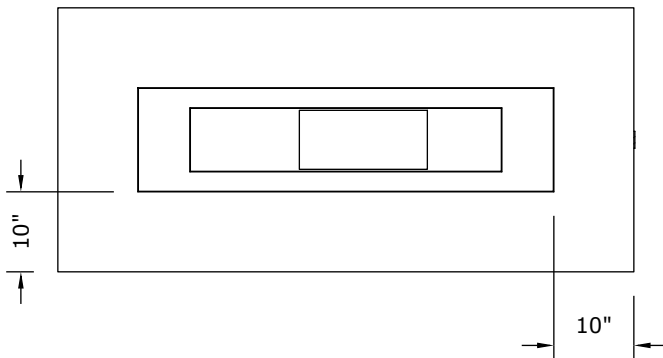
IVORY BEACH STONE



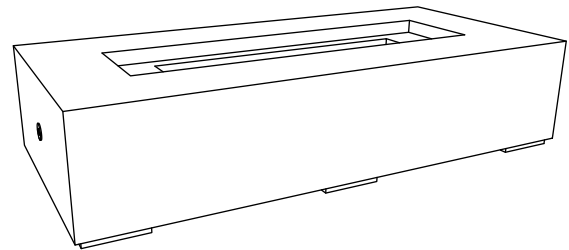
SLATE BEACH STONE



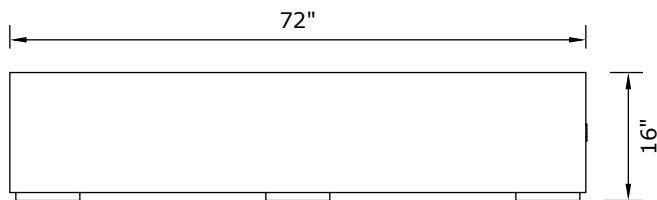
BLACK LAVA ROCK



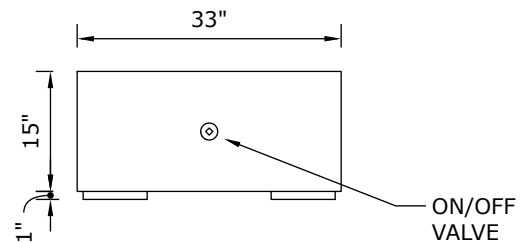
PLAN VIEW



PERSPECTIVE VIEW



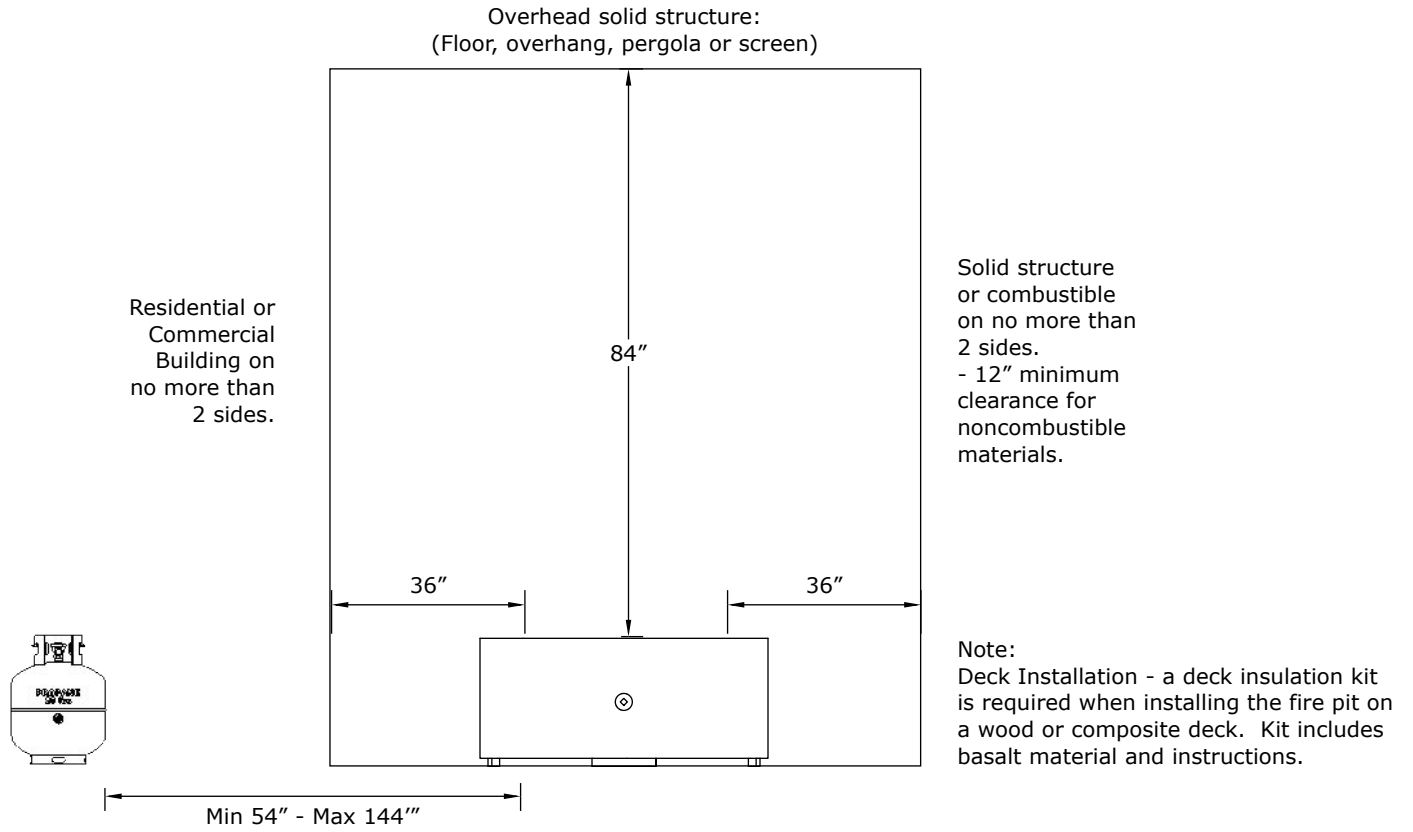
FRONT ELEVATION



SIDE ELEVATION

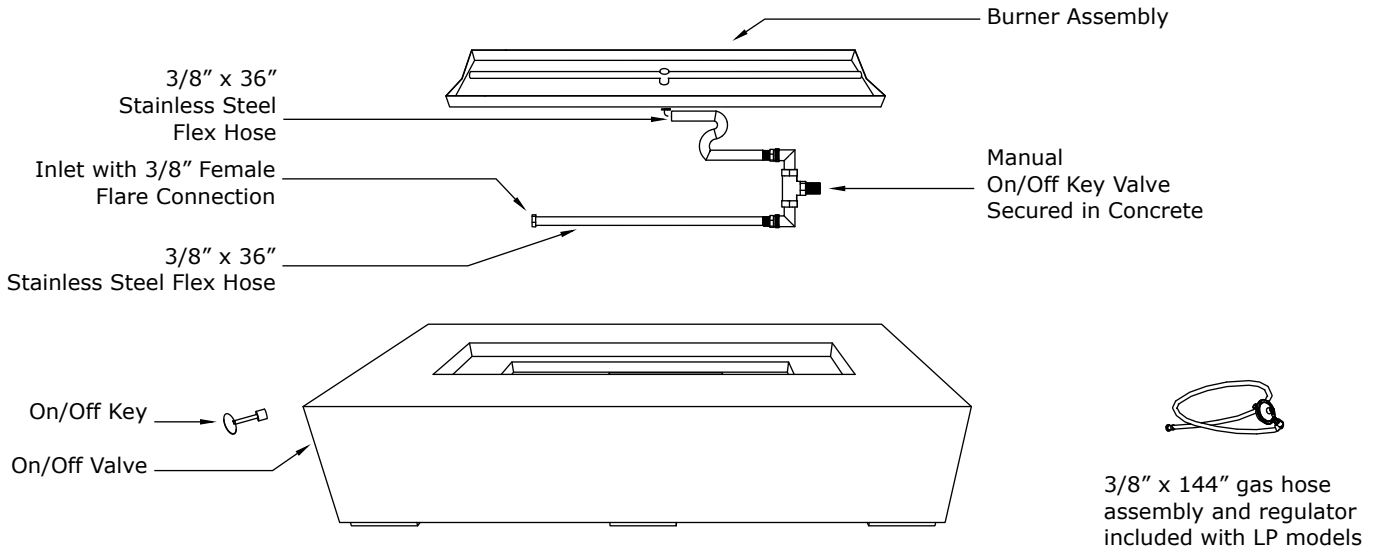


Clearances



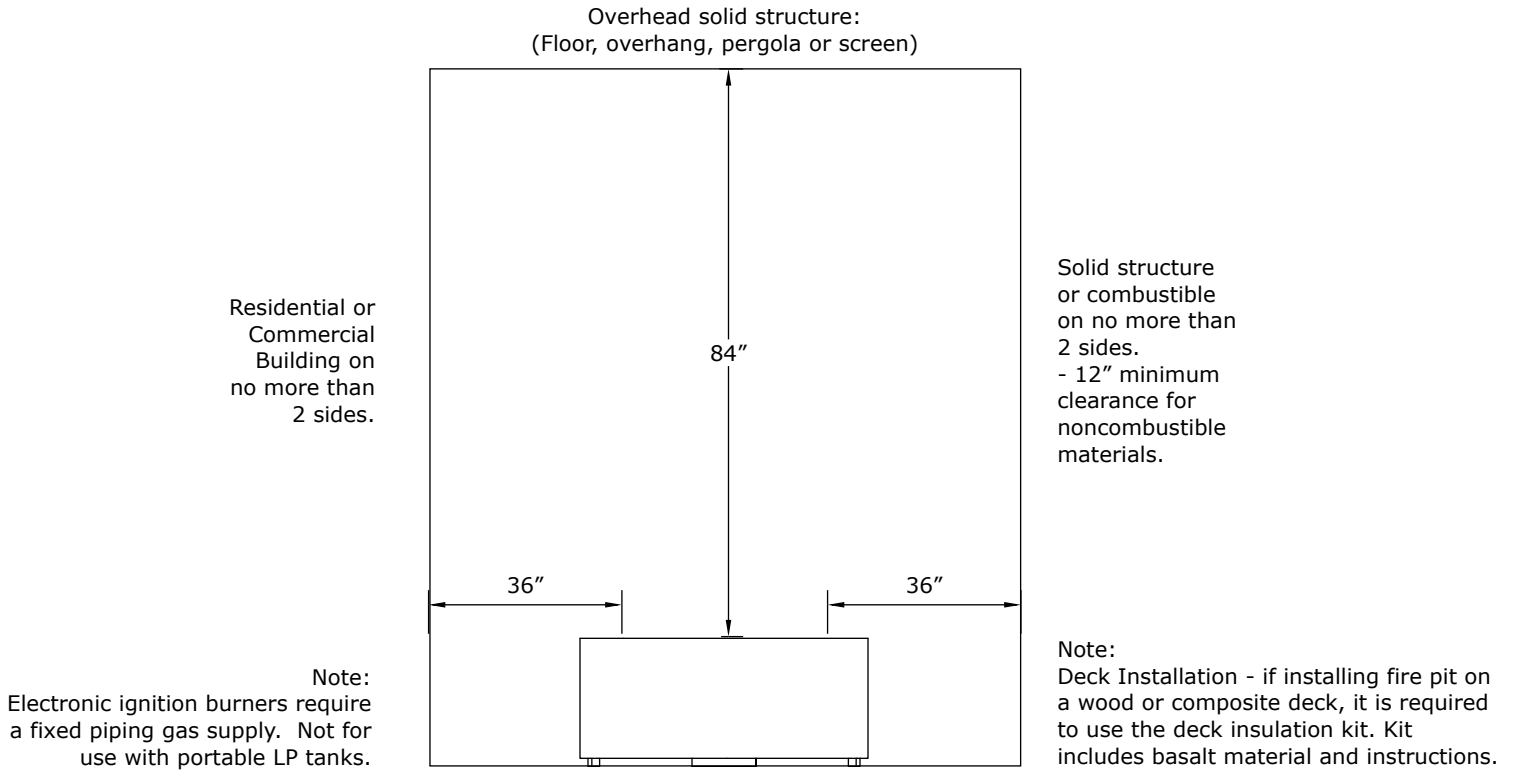
Burner Assembly

49" Match Lit Burner





Clearances:



Burner Assembly

Electrical:

120V Outdoor receptacle required. Must be installed and grounded in accordance with local codes.

49" Electronic Ignition Burner

