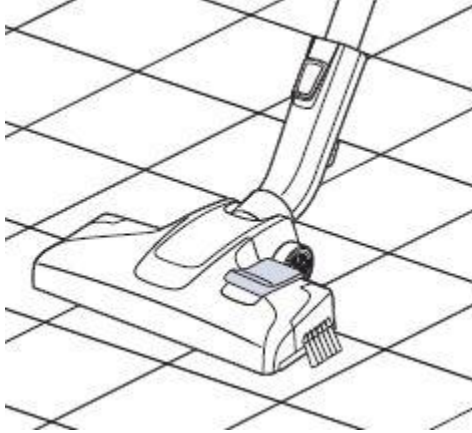
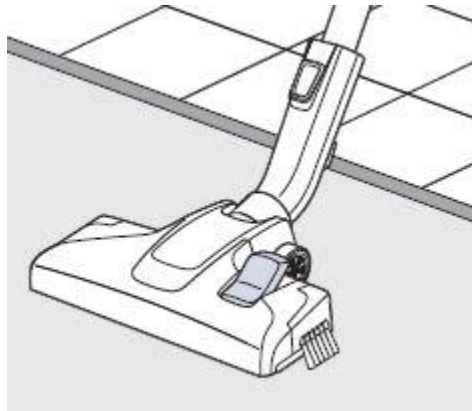


My SmartClean Canister Vacuum is hard to push | Support

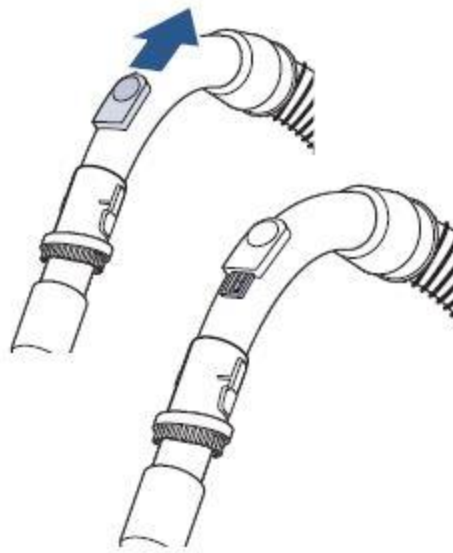
- Lower the brush to vacuum bare floors



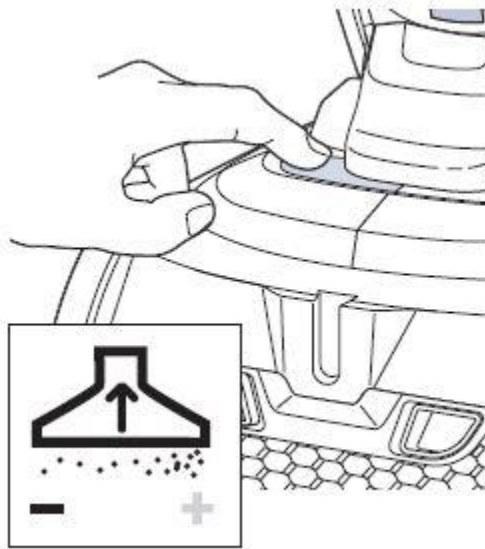
- Lift the brush up when doing carpet



- The Airflow Valve is located on the top of the handle at the connection point between hose and handle
 - Opening this should relieve the problem



- Decreasing the suction power can make it easier to push on plusher carpets



- Also, extending the wand slightly - so the backward/forward movement is happening further away from you
 - This should be easier than starting the 'push' stroke near your body