

PLEASE NOTE:

This manual contains safety, assembly, use, and maintenance instructions. Read these instructions carefully before use and keep them for future reference. DO NOT DISCARD.

Contents

1 Safety and Assembly Warnings Page 2 - 3

- Assembly Warnings
- Child Warnings
- Trailer Use Warnings
- Safe Riding Warnings
- Recommendations
- Care

2 Parts and Features Page 4

3 Assembly Page 5 - 7

1. Install Safety Guards
2. Unfold Frame
3. Attach Canopy
4. Extend & Secure Tow Bar
5. Attach Wheels
6. Install Flag

4 Trailer Attachment to Bicycle Page 7 - 8

1. Using Quick-Release, Using Nutted Axle
2. Securing Safety Strap

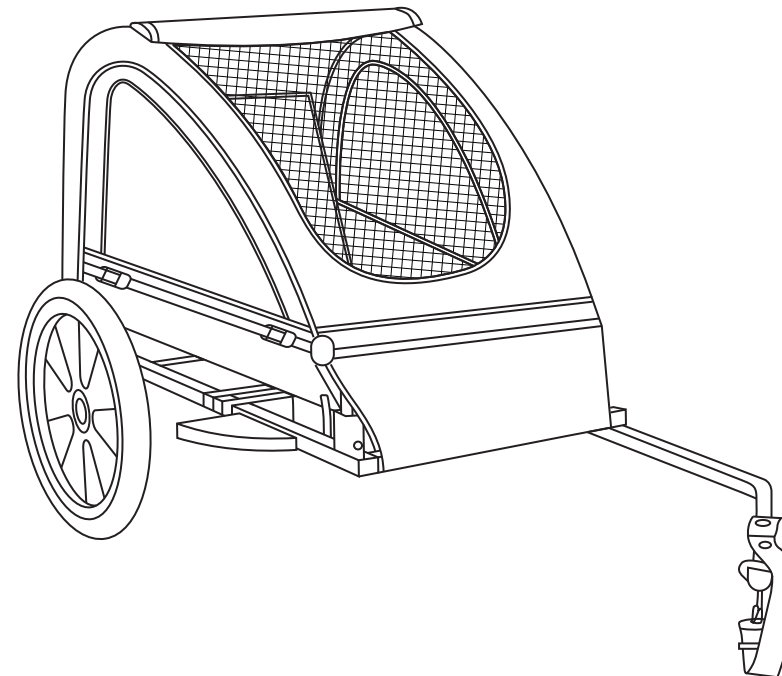
5 Using the Safety Harness Page 8 - 9

1. Adjusting The Shoulder Straps
2. Converting The Safety Harness For One Child Use

6 Disassembly and Storage Page 10 -11

1. Removing Trailer From Bicycle
2. Removing The Flag
3. Removing The Wheels
4. Folding The Tow Bar
5. Removing The Canopy
6. Folding The Frame

7 Warranty Page 11



1 Safety and Assembly Warnings

FAILURE TO FOLLOW THESE INSTRUCTIONS LISTED BELOW MAY RESULT IN SERIOUS INJURY OR DEATH.

- Always read and understand the information and warnings in this manual before using the Bicycle Trailer.
- If you are unsure of any information in this manual or have a question regarding assembly or use please call customer service.
- Always keep this manual for reference and include it with resale of the Cargo Trailer.

Assembly Warnings

- An adult who has read and understands the information and warnings in this manual must assemble this product according to manufacturer's instructions.
- Do not use the product if there are any missing or damaged parts.
- Dispose of all plastic bags and wrapping material immediately and responsibly.
- Check the assembly (i.e.: crossbar locked, screws tight) before using the product. Use caution to avoid pinch points when folding or unfolding the trailer.
- Never allow children to assemble, fold, or disassemble the trailer.
- Use caution to avoid pinch points when folding or unfolding the trailer.

Child Warnings

- The maximum weight capacity per child is 40lbs. The total weight (children & cargo) in the double trailer cannot exceed 87 lbs. The total weight (child & cargo) in the single trailer cannot exceed 49lbs.
- Do not use children who exceed the weight limitations as it increases the risk of tipping the trailer.
- Avoid serious injury from falling or sliding out. Always use the 5-point Safety Harness.
- Never leave children unattended in or around the trailer.
- Never have more than two children in the trailer at a time.
- When using the double trailer with one child, seat them in the center.
- Never use with children that cannot support their own head.
- Never use the trailer with children who cannot sit unaided.
- Check the trailer (Pram) body or seat until attachment devices are correctly engaged before use.
- Always use the crotch strap in combination with the waist belt.
- Do not allow any of the child's body, clothing, shoe laces, or toys come in contact with a moving trailer.
- Take proper steps (clothing, ventilation, hydration) to protect the child from exposure hazards such as wind chill & heat exhaustion.
- Always wear a helmet that complies with local regulations.

Trailer Use Warnings

- Failure to comply with manufacturer's instructions can lead to serious injury or death of the passenger/rider
- Do not add a seat pad (mattress) thicker than 40mm.
- Parcels or accessories placed on the trailer may cause the trailer to become unstable.
- Do not place items on the trailer. Hazardous conditions may exist if package carrying accessories are added to the product.
- Check the trailer for damage. Do not use if damaged.
- Be sure the fasteners are tight. Tighten if necessary.
- Over inflation of tires may result in failure and risk of serious injury. Do not exceed maximum pressure as show on tires.
- If necessary, inflate the tires to within the range shown on the tire sidewall. Always use a foot or hand pump to inflate the tires.
- The safety flag and reflectors must be in place. Do not use the trailer without the safety flag and reflectors in place.
- Always have the canopy in place.
- Do not make any modifications to the trailer as it increases the risk of failure.
- Accessories not approved by the manufacturer must not be used.

Safety Riding Warnings

- Be sure the brakes work properly. Braking distance is increased when pulling a trailer.
- Avoid braking suddenly.
- Always maintain a safe speed. The trailer is not intended for use at high speeds. Do not exceed 10MPH
- The trailer requires a wide turning radius. Do not turn sharply. Sharp changes in any direction may cause a tip over.
- Use caution when turning on loose or uneven surface and when going downhill.
- Allow extra clearance for the trailer when near curbs, parked cars, and other obstacles.

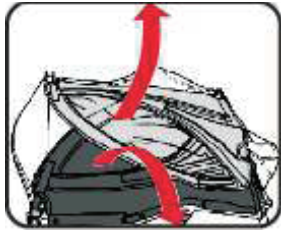
WARNING!

- Do not ride over curbs, bumps or holes.
- Do not use the trailer in hazardous weather or at night.
- Do not pull or push the trailer with a vehicle.
- This product is not suitable for running or skating.
- Red reflectors must be visible on the rear of the trailer.
- Never ride a bicycle at night without adequate lighting. Obey all local legal requirements for lighting.

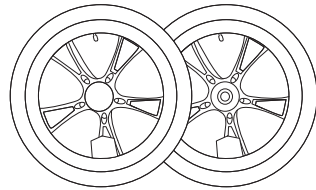
Care

- To clear the trailer: use only mild soap and water. Do not use cleaning solvents.
- Routinely check that all fasteners and equipment (wheels, reflectors, flag, etc.) are tight and properly assembled.
- Check the tire pressure regularly. The recommended tire pressure ranges are printed on the tire sidewall. Only use a foot or hand pump to inflate. Do not use high-compressed air, high-pressure compressors.

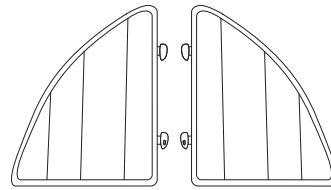
2 Parts and Features



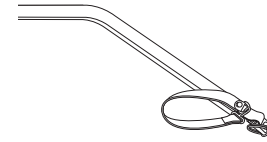
Frame & Canopy



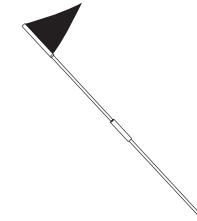
Wheels (2)



Wheel Safety Guards (2)



Tow Bar



Safety Flag

Requirements for passengers	1 Child	2 Child
Permissible total weight (Product + children + luggage)	88lbs/40kgs	132lbs/60kgs
Maximum weight per child	40lbs/18kgs	
Minimum Age	1 year old	
Maximum Age	6 years old	
Maximum height	46in(~3.8ft)/116cm	
Requirements for baggage storage space	11lbs/5kgs	
Pouch for small items	4lbs/2kgs	
Maximum permissible speed	10mph/16kph	

3 Assembly

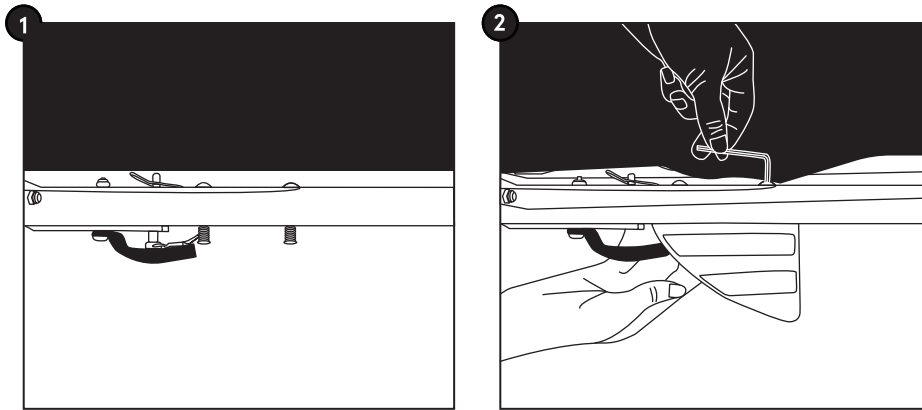
⚠ WARNING

Read and understand the manual before assembling.

1 Install Safety Guards

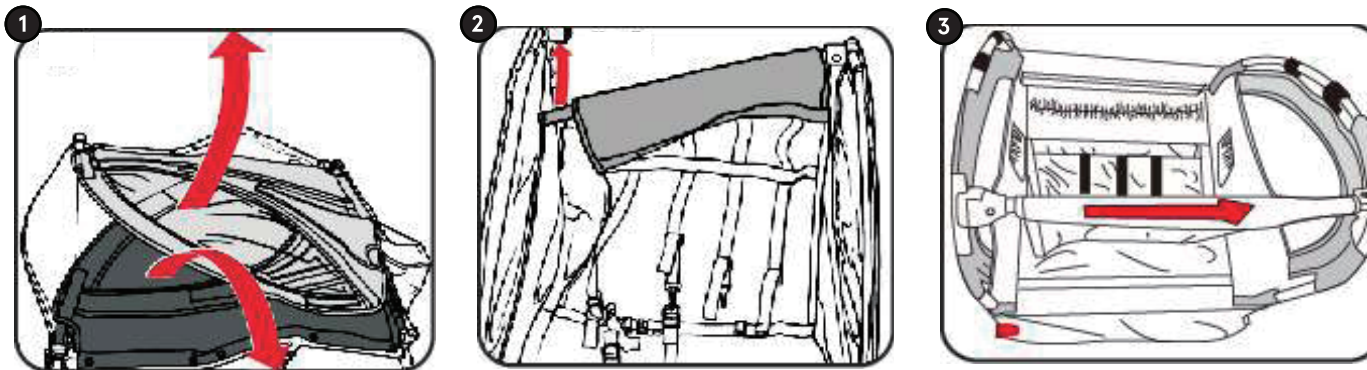
Take out the screw rod and thread is through the frame inside (**See #1**). Distinguish the left and right side of the angle guards, then lock the screws (**See #2**)

NOTE - The supplied nuts have a Nylon threadlocker to prevent them from vibrating loose. When installing the nuts onto the supplied bolts they will thread on easily until the bolt reaches the outer end of the nut. After that you will feel some resistance as the nut is threaded onto the remainder of the bolt. Make sure nuts are fully threaded onto bolts.



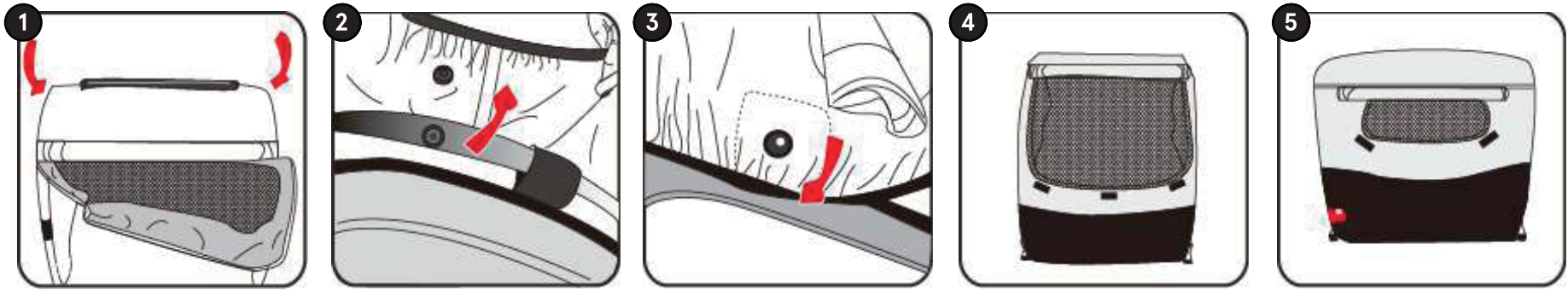
2 Unfold Frame

Lift the right side window with side rail up into a vertical position. (**See #1**). Lift the left side wall up into a vertical position (**See #2**). Rotate the crossbar into the crossbar latch. (**See #3**). Check the crossbar is locked into place by pulling up and down on it.



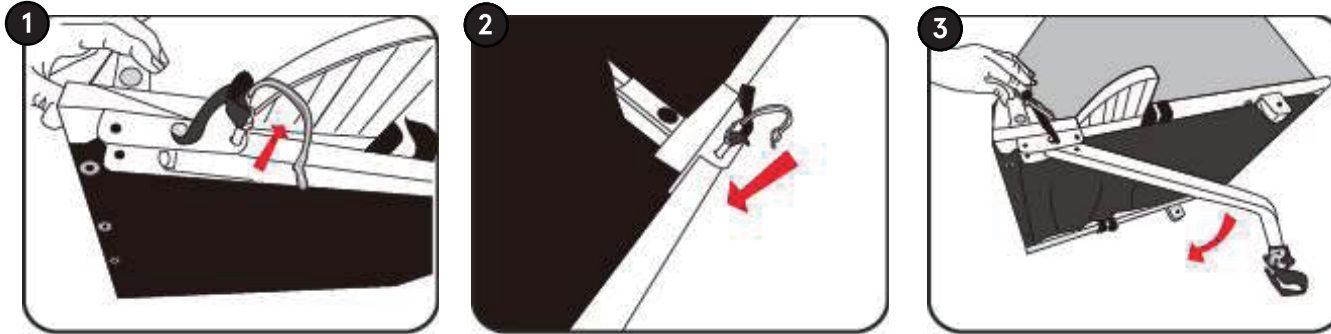
3 Attach Canopy

Distinguish the canopy's front and rear direction, button the snaps on either side (See #1, 2, 3). Attach the Velcro tabs on the front and rear (See #4, 5).



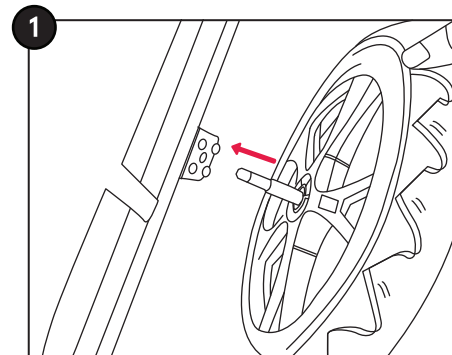
4 Extend & Secure Tow Bar

Place the trailer on its side with the tow bar facing up. Remove the locking pin from the tow bar bracket (See #1). Rotate the tow bar until it rests on the front end of the frame (See #2). Insert the locking pin through both the bracket and tow bar (See #3). Slide the metal safety loop on the end of the locking pin. Check that it is securely in place.



5 Attach Wheels

Insert the axle of the wheel into the rear wheel bracket hole (See #1). Interlock the gear on the wheel with the gear on the rear brake. Push the wheel into the bracket until you hear the axle click into place.

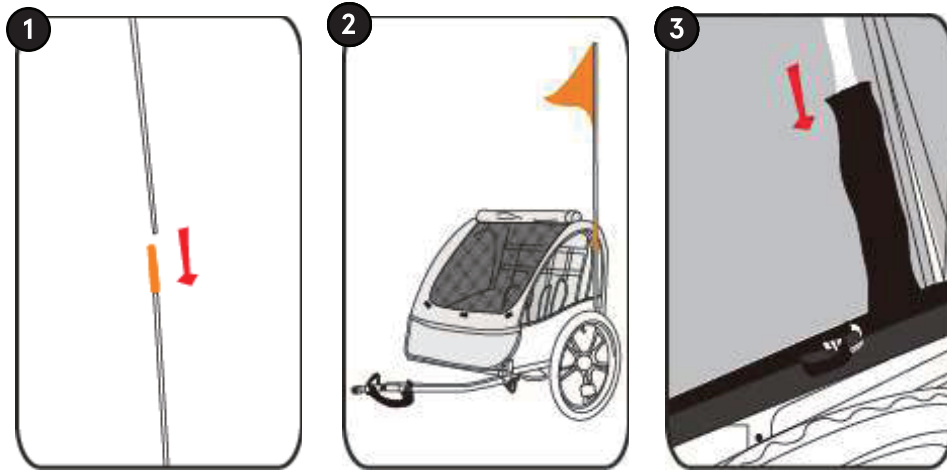


⚠ WARNING

Always check that the wheels are securely locked in place before use.
Wheels that are not securely locked in place may fall-off the trailer and cause serious injury or death.

6 Install Flag

Assemble the flag pole sections by sliding the top half of the pole into the opening of the bottom half of the pole. Then, insert the flag pole into the sleeve located at the rear corner of the trailer.

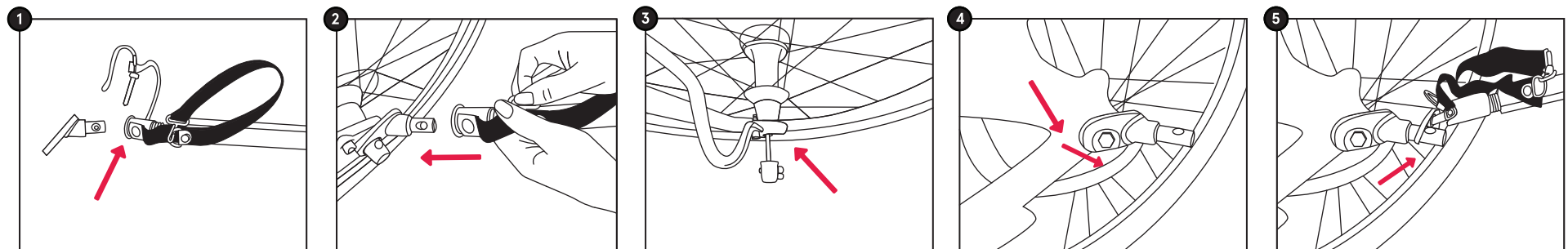


4 Trailer Attachment to Bicycle

IMPORTANT! Make sure the connector and tow bar are in-line, this ensures the trailer tracks straight with little resistance.

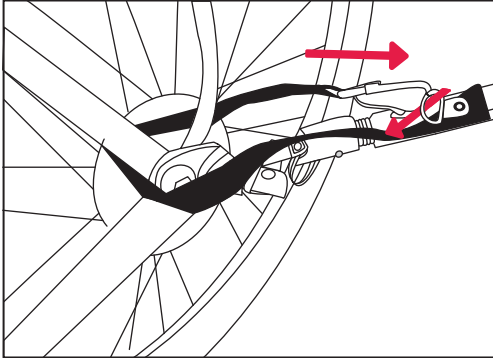
1 Using Quick-Release & Using Nutted Axle

Remove the Axle Connector from the trailer Tow Bar (**See #1**). Then, remove the Quick-Release Skewer (QR) or Hub Axle Nut from the left (non-drivetrain) side of the bicycle (**See #2**). Next, insert the QR skewer through the Axle Connector and affix to the axle. Tighten the QR skewer. Keep the Axle Connector parallel to the ground (**See #3**). For Nutted hub axles, slide the Axle Connector over the axle, affix the nut to the axle and tighten (**See #4**). Lastly, connect the trailer Tow Bar to the Axle Connector (now mounted to the hub axle (**See #5**)).



2 Securing Safety Straps

Wrap the tow bar safety strap around the bicycle frame. Clip the safety strap to the tow bar ring on the end of the tow bar. Be sure the tow bar safety strap is securely attached before using the trailer.



⚠ WARNING

Always attach the tow bar safety strap to the bicycle when using the trailer. Using the trailer without the safety strap attached to the bicycle may result in serious injury or death.

5 Using the Safety Harness

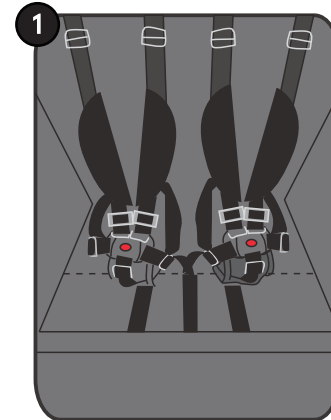
⚠ WARNING!

- Avoid serious injury from falling or sliding out. Always properly secure passenger(s) with safety harness.
- Place the shoulder straps over the child's shoulders with the waist belt under the child's arm.
- Never leave your child (children) unattended in or near the bicycle trailer.
- Unbuckle the shoulder straps from the center of the lap buckle.
- Passenger must be seated in the center compartment.
- Place the center lap buckle between the child's legs.

IMPORTANT! Adjust the straps into the lap belt buckle, and adjust the shoulder straps. Clip the shoulder straps into the lap belt buckle, and adjust the shoulder straps. (See #1)

To remove the child from the trailer:

Unfasten the clips from the lap buckle. Pull the straps away from the body and remove the child from the trailer.

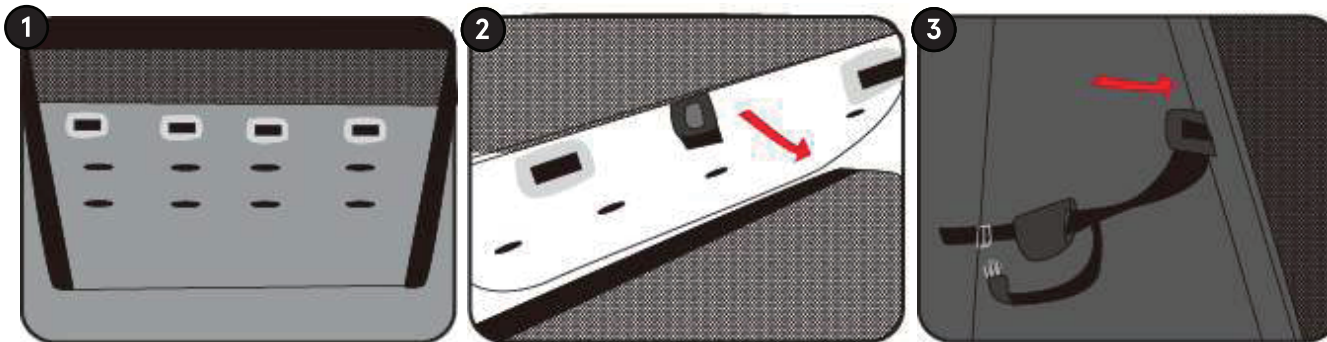


1 Adjusting the Shoulder Straps

There are three slots on the back of the seat. These slots are used to adjust the proper height of the shoulder straps to your child's height. **(See #1)**

To adjust the shoulder strap height:

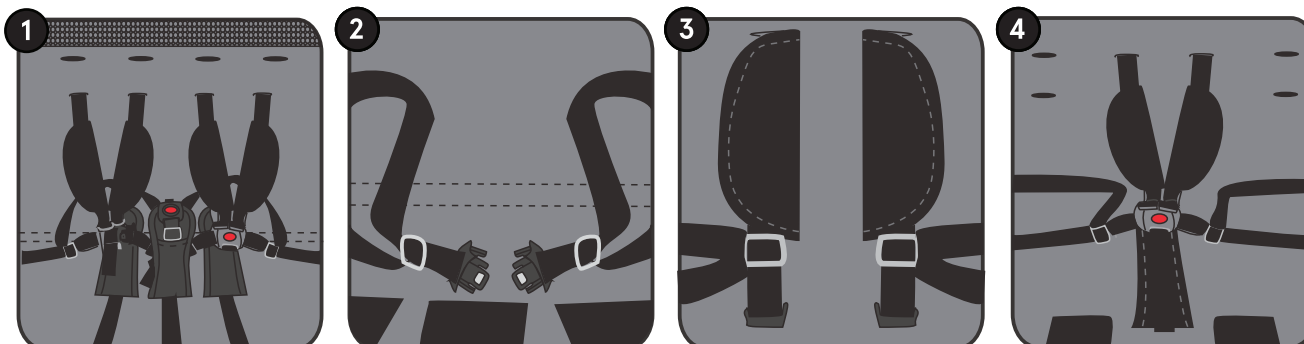
- Starting from the back of the seat, pull the shoulder strap anchor away from the seat **(See #2)**.
- Insert the anchor through the slit in the seat to the front of the seat at the desire height **(See#3)**.
- Pull the strap and anchor all the way through to the back. Make sure the strap is properly anchored on the seat back. Repeat the steps for the opposite strap.



2 Converting the Safety Harness for One Child Use

To convert the safety harness for one child:

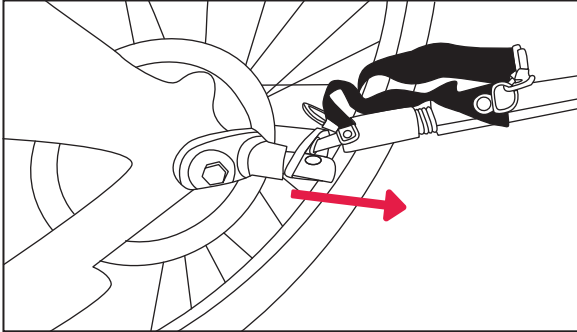
- Install the clasp with red bottom at the middle position **(See #1)**
- Changing the buckles positions on both sets of safety harnesses **(See #2)**
- Changing the two complete shoulder straps. See "Adjust the Shoulder Strap Height" section for more details **(See#3)**.
- Clip the shoulder straps into the lap belt buckle, and adjust the shoulder straps **(See #4)**.



6 Disassembly and Storage

1 Removing Trailer From Bicycle

To remove the tow bar from bicycle, unfasten the clip on the safety strap from the tow bar ring, and unwrap it from the bicycle frame. Then, clip the strap back on the D-ring of the tow bar. Remove the locking pin from the tow bar connector, then remove the tow bar from the connector.

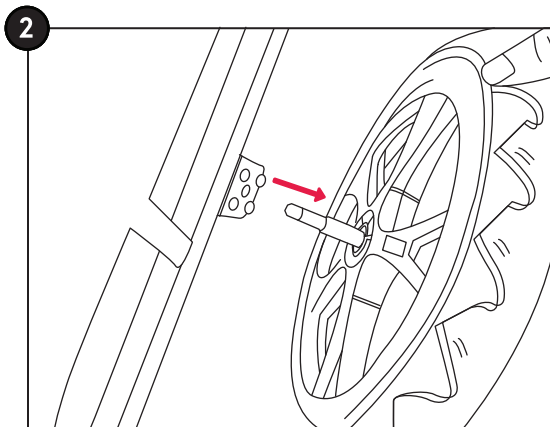
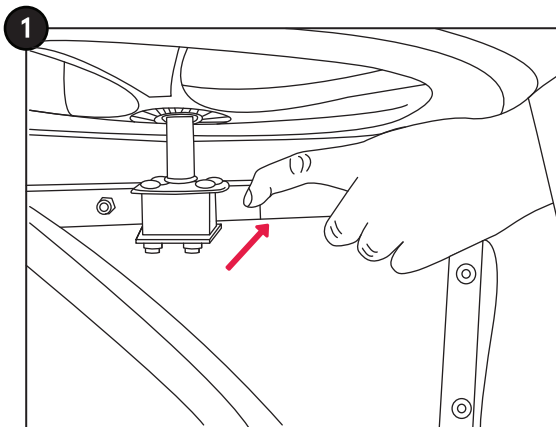


2 Removing the Flag

Next, remove the flag and separate the flag pole sections. Remove the flag from the fabric.

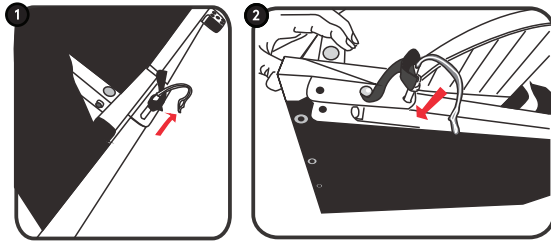
3 Removing the Wheels

To remove the wheel, pull the wheel release lever out and hold (**See #1**). Remove the wheel, and release the lever (**See #2**).



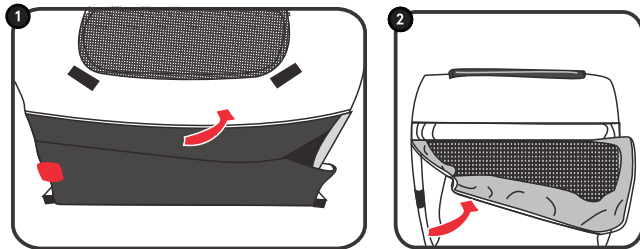
4 Folding the Tow Bar

Fold the tow bar by removing the locking pin from the tow bar bracket. **(See #1)**. Then, rotate the tow bar back 180 degrees into the trailer frame bottom. Lastly, secure the tow bar with the locking pin. Make sure the safety strap is snapped into place **(See #2)**.



5 Detaching the Canopy (Partially)

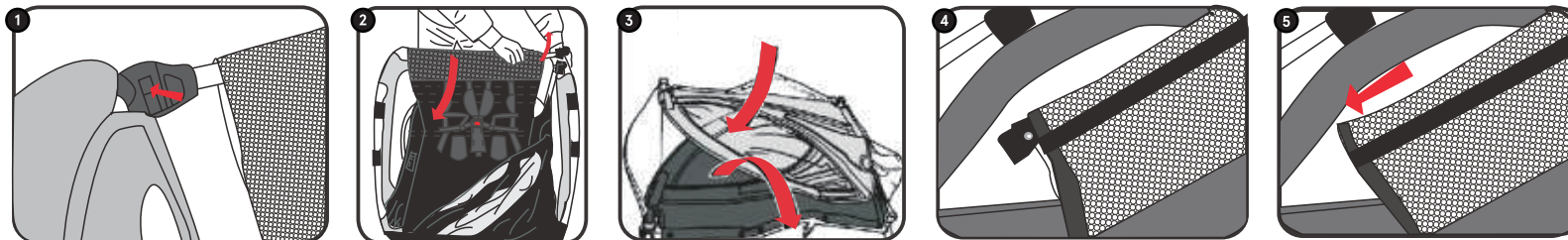
Unfasten the velcro stickers on the front and back **(See #1)**. Unfasten the hooks and loops on the top **(See #2)**



6 Folding the Frame

- Firmly press the release tab on the crossbar latch and lift **(See #1)**.
- Lift and rotate the crossbar across and down until flat against the side wall/window **(See #2)**.
- Carefully fold the side wall/windows over one another until flat to the trailer floor **(See #3)**.

IMPORTANT! Please make sure the crossbar end is protected/padded, tucked into the fabric sleeve, and properly folded/positioned so it does not damage the side frame plastic windows **(See #5 & #6)**.



7 Warranty

Retrospec warrants this product to be free of defective materials and workmanship for 1 year from the date of original purchase.