

# delta

## Bike Hitch™ Pro

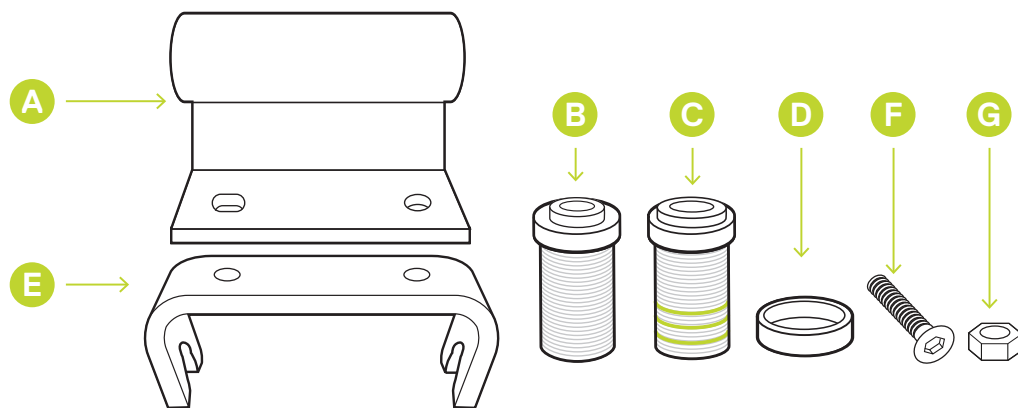
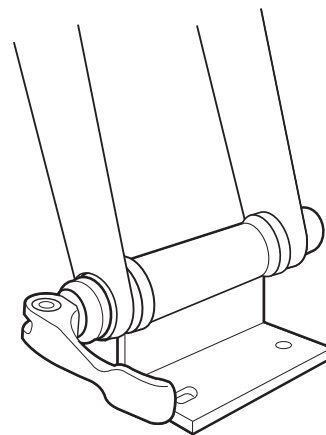
### Assembly instructions BH6002-PRO

#### Parts

- A** x1 — Base
- B** x2 — 12mm Inserts
- C** x2 — 15mm Inserts
- D** x2 — Locking Nuts
- E** x1 — Roof Rack Adaptor  
(fits 9 and 12mm axles)
- F** x2 — Bolts
- G** x2 — Nuts

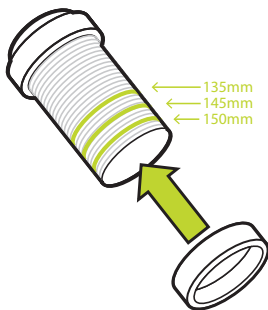
#### Tool Required

Allen Key

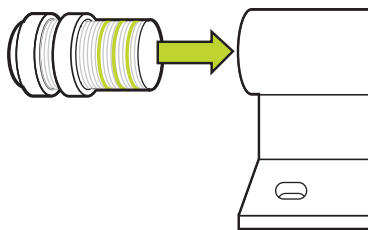


#### For 135, 145, 150mm Widths (15mm)

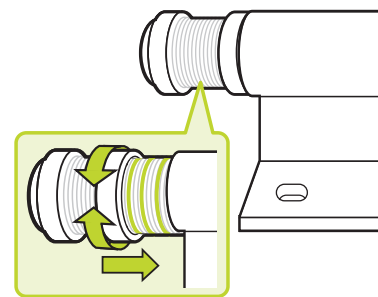
- 1 Screw the locking nuts onto the inserts past the three lines.



- 2 Screw the insert into the base up until the desired width line is flush with the base. 135 (outer line), 145 (middle line) and 150 (inner line).

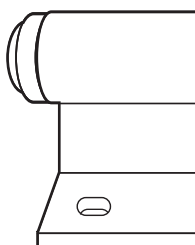


- 3 Screw the locking nut towards the base and tighten against base until secure.



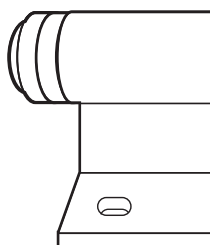
#### For 100mm Widths (12 and 15mm)

- 1 Use only the insert required tightened flush to outer end of base.



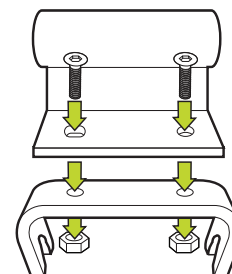
#### For 110mm Widths (15mm)

- 1 Use the insert required with lock nut tightened flush to outer end of base.



#### Base Adapter Attachment

- 1 Use allen key to bolt base to roof rack adaptor as shown.



#### WARNING

The Bike Hitch Pro is designed to hold a bicycle only and has not been designed to support a rider and should never be used with a person on the bike.