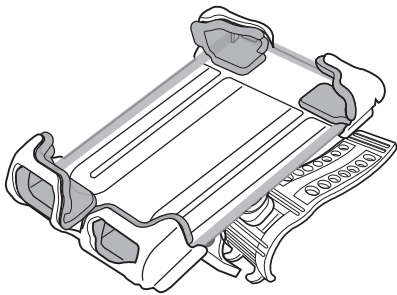


delta_Δ

Hefty+ Deluxe Phone Holder

Assembly instructions HL6300

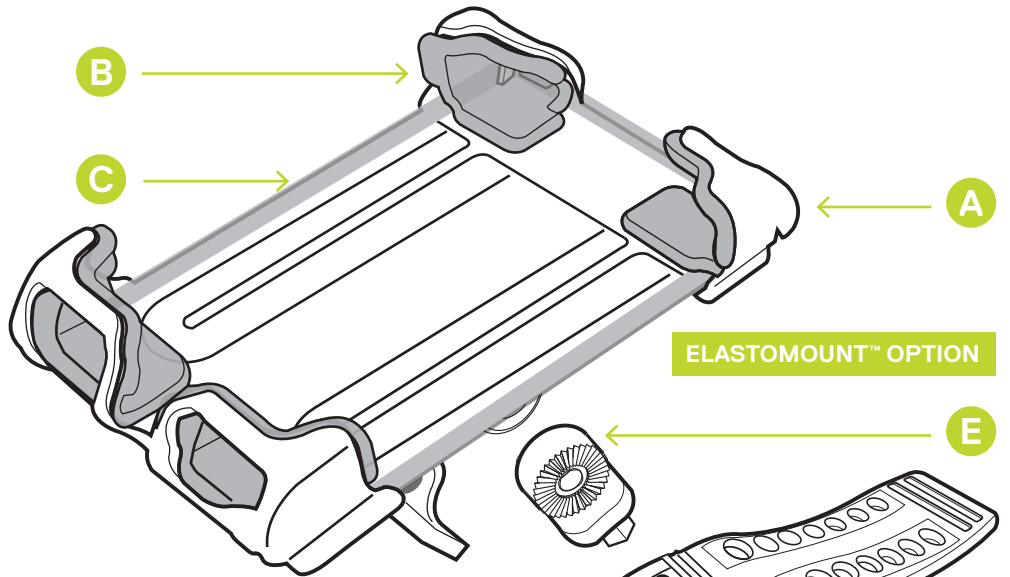


Parts

- A** x1 — Phone Holder
- B** x4 — Optional Rubber Inserts
(remove for extra large cases)
- C** x1 — Bungee
- D** x1 — ElastoMount Clamp
- E** x1 — ElastoMount Gear
- F** x1 — ElastoMount Screw
- G** x1 — Bolt
- H** x1 — Stem Mount
- I** x1 — Handlebar Clamp
- J** x2 — Rubber Shim
- K** x1 — Thumb Screw
- L** x1 — Dry Bag
- M** x4 — Replacement Bumpers

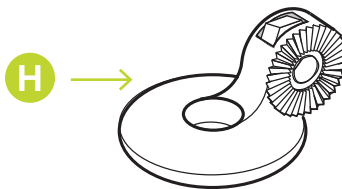
Tool Required

Phillips Head
Screwdriver

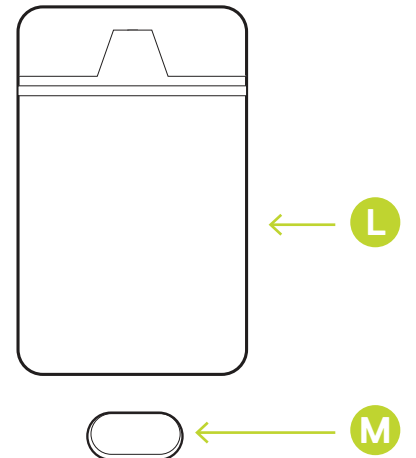
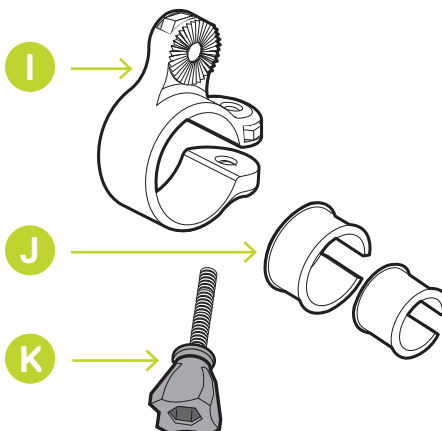


ELASTOMOUNT™ OPTION

STEM MOUNT OPTION



HANDLEBAR CLIP OPTION



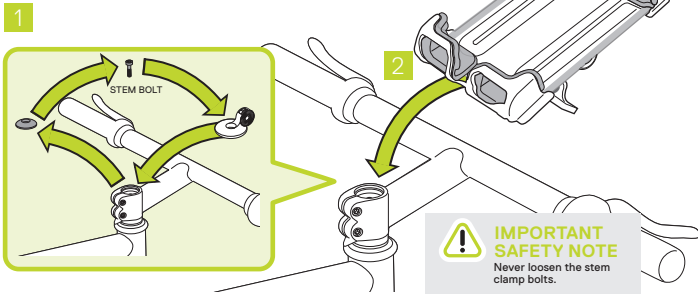
WARNING

Using phone device while riding can cause accidents resulting in serious injury.

Important: Nuts and bolts can loosen over time, resulting in serious danger should the item fall off while in motion. Check frequently to ensure all bolts are properly tightened. Ensure the device fits snugly in the holder before riding. Not for off-road use.

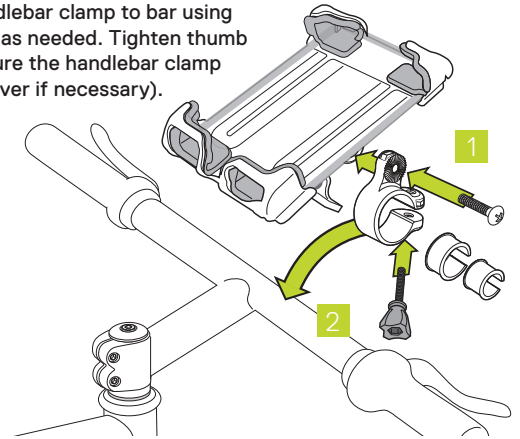
Using the Stem Mount

- 1 Remove existing stem cap from bicycle. Use existing stem bolt to install Smartphone Holder stem mount on to your bicycle stem.
- 2 Connect holder to stem mount using short bolt and adjust angle before full tightening.



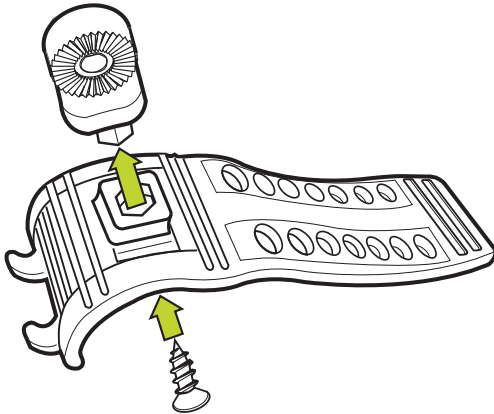
Using the Handlebar Clamp

- 1 Connect holder to handlebar clamp using short bolt and adjust angle before full tightening.
- 2 Connect handlebar clamp to bar using rubber shims as needed. Tighten thumb screw to secure the handlebar clamp (use screwdriver if necessary).



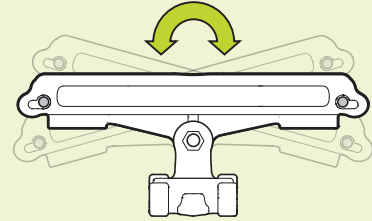
Using the ElastoMount™

- 1 Determine the most appropriate and preferential position according to your riding position. Attach ElastoMount Gear to the ElastoMount Clamp, before attaching to Phone Holder.

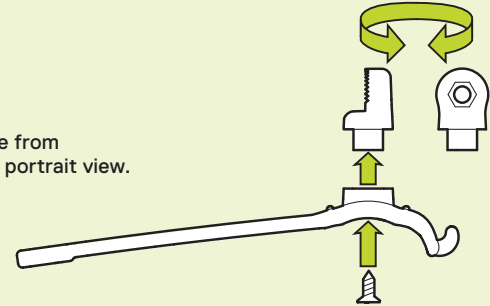


ElastoMount Instructions:

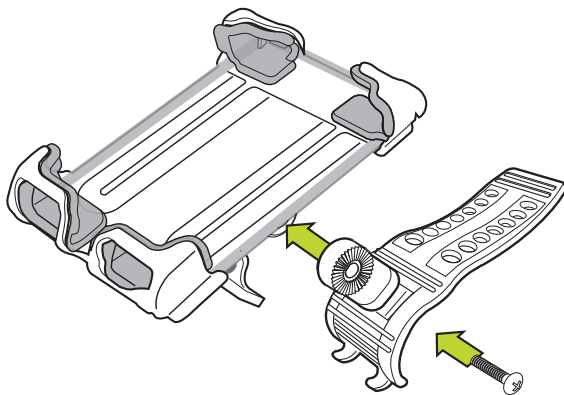
Easily change angle of phone.



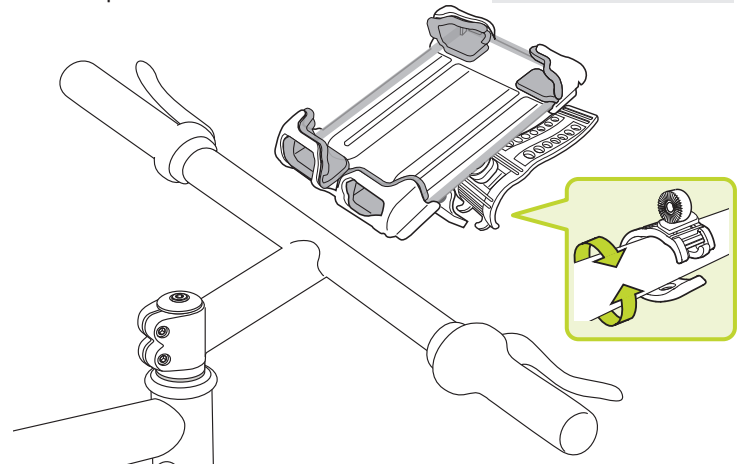
Switch phone from landscape to portrait view.



- 2 Connect holder to handlebar clamp using short bolt and adjust angle before full tightening.



- 3 Secure ElastoMount to Handlebar or stem Mounts onto any bar up to 1 3/8".



Need help?

Email us at service@designbydelta.com & we'll help solve your issue.

Assembly video

Visit designbydelta.com/downloads

