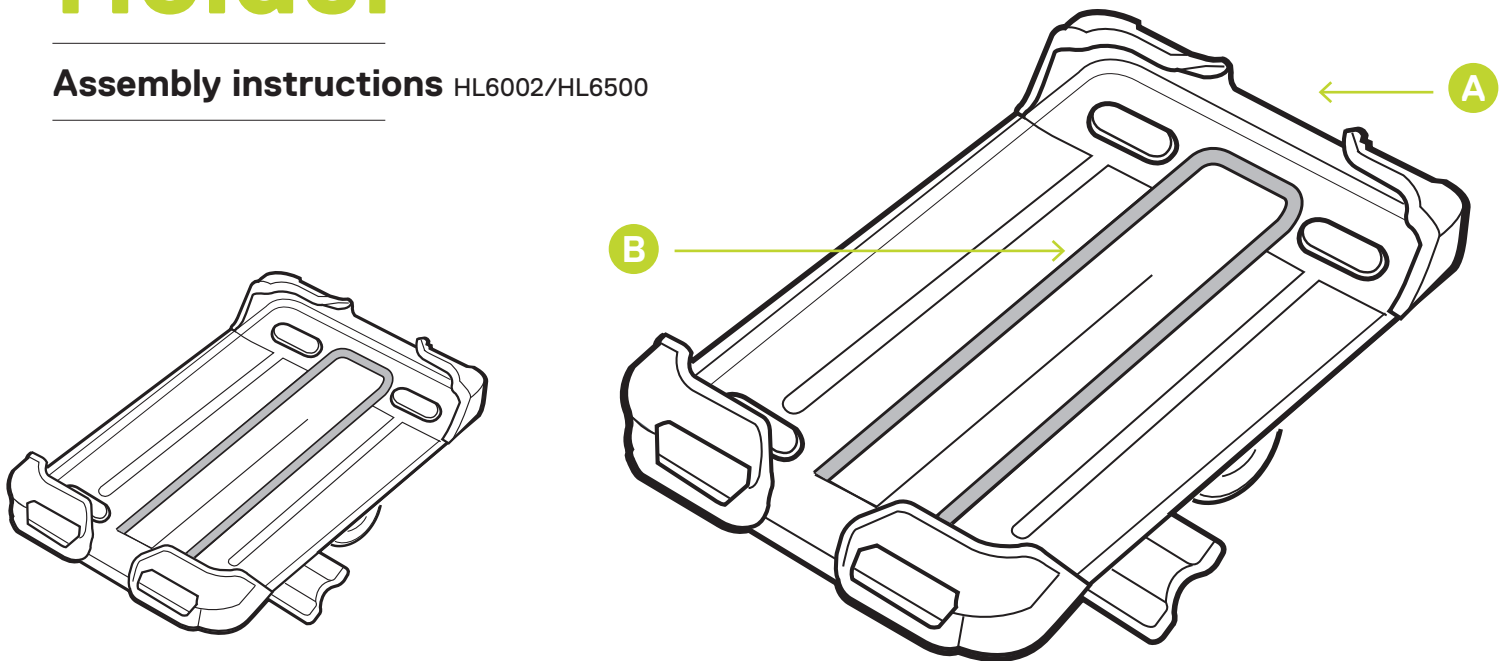


delta<sub>Δ</sub>

# Smartphone Holder

**Assembly instructions** HL6002/HL6500



## Parts

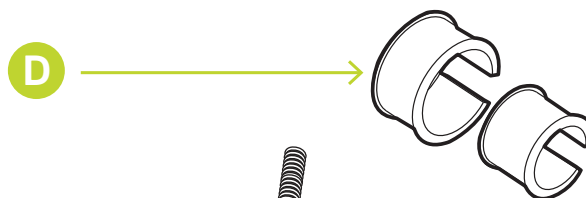
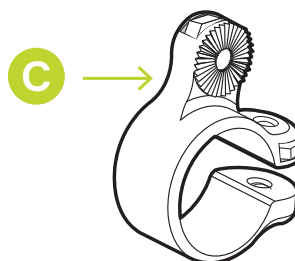
- A** x1 — Phone Holder
- B** x1 — Bungee
- C** x1 — Handlebar Clamp Bolt
- D** x2 — Rubber Shim
- E** x1 — Thumb Screw
- F** x1 — Stem Mount
- G** x1 — Short Bolt

## Tool Required

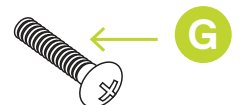
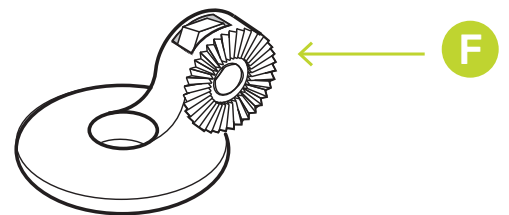
Phillips Head Screwdriver



## HANDLEBAR CLIP OPTION



## STEM MOUNT OPTION



## WARNING

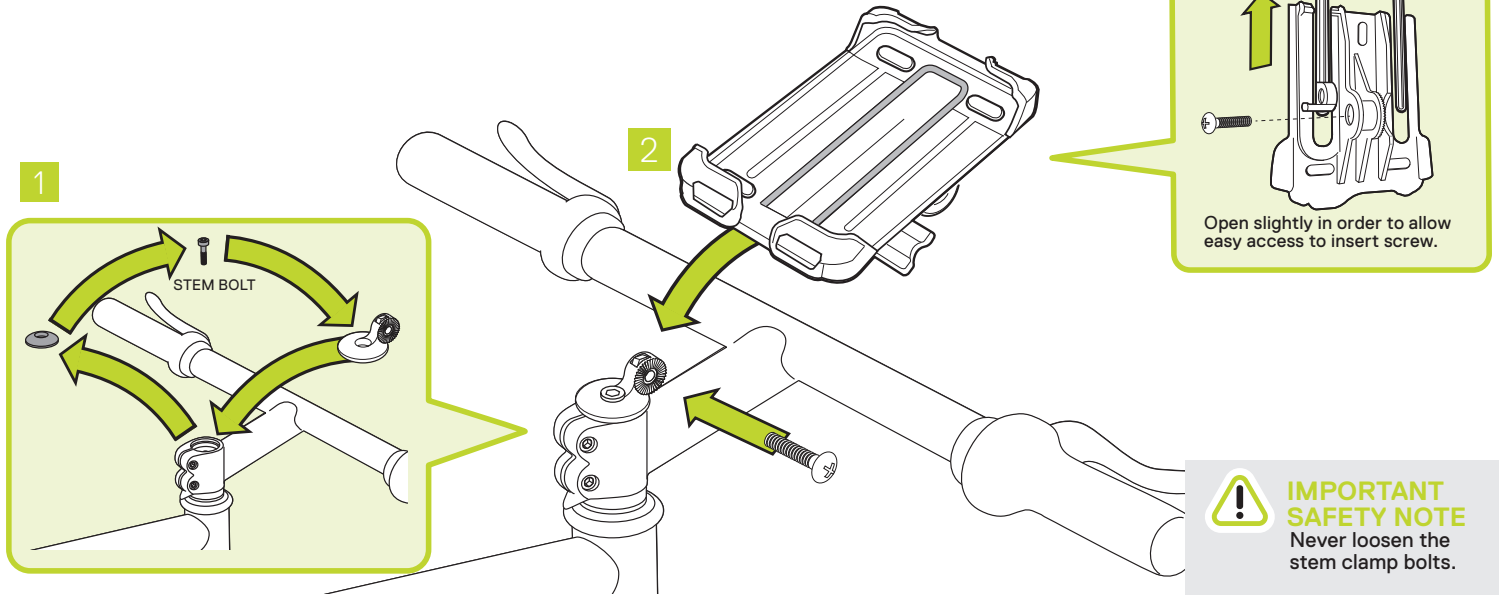
Using phone device while riding can cause accidents resulting in serious injury.

Important: Nuts and bolts can loosen over time, resulting in serious danger should the item fall off while in motion. Check frequently to ensure all bolts are properly tightened. Ensure the device fits snugly in the holder before riding. Not for off-road use.

## Using the Stem Mount

- 1 Remove existing stem cap from bicycle.  
Use existing stem bolt to install Smartphone Holder stem mount on to your bicycle stem.

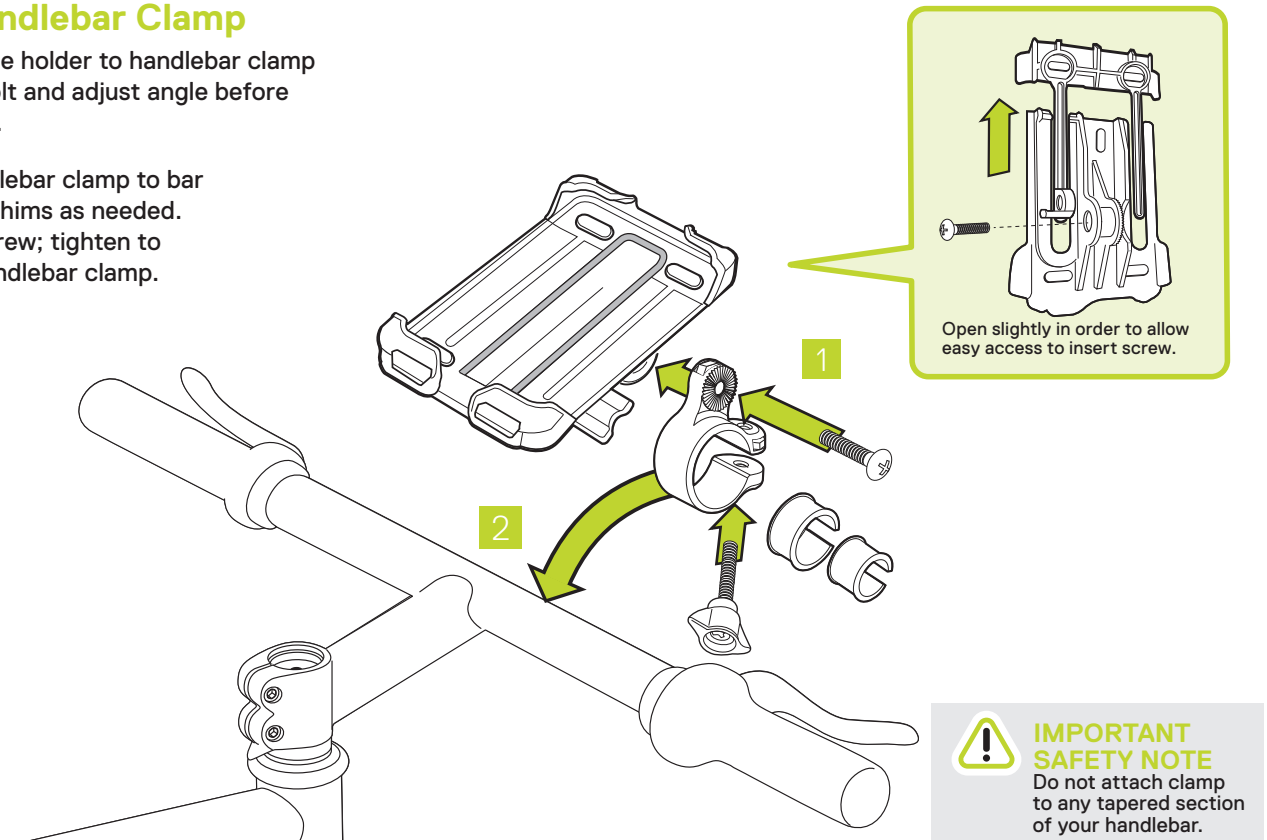
- 2 Connect phone holder to stem mount using short bolt and adjust angle before full tightening.



## Using the Handlebar Clamp

- 1 Connect phone holder to handlebar clamp using short bolt and adjust angle before full tightening.

- 2 Connect handlebar clamp to bar using rubber shims as needed. Use thumb screw; tighten to secure the handlebar clamp.



## Need help?

Email us at [service@designbydelta.com](mailto:service@designbydelta.com)  
& we'll help solve your issue.

## Assembly video

Visit [designbydelta.com/downloads](http://designbydelta.com/downloads)

