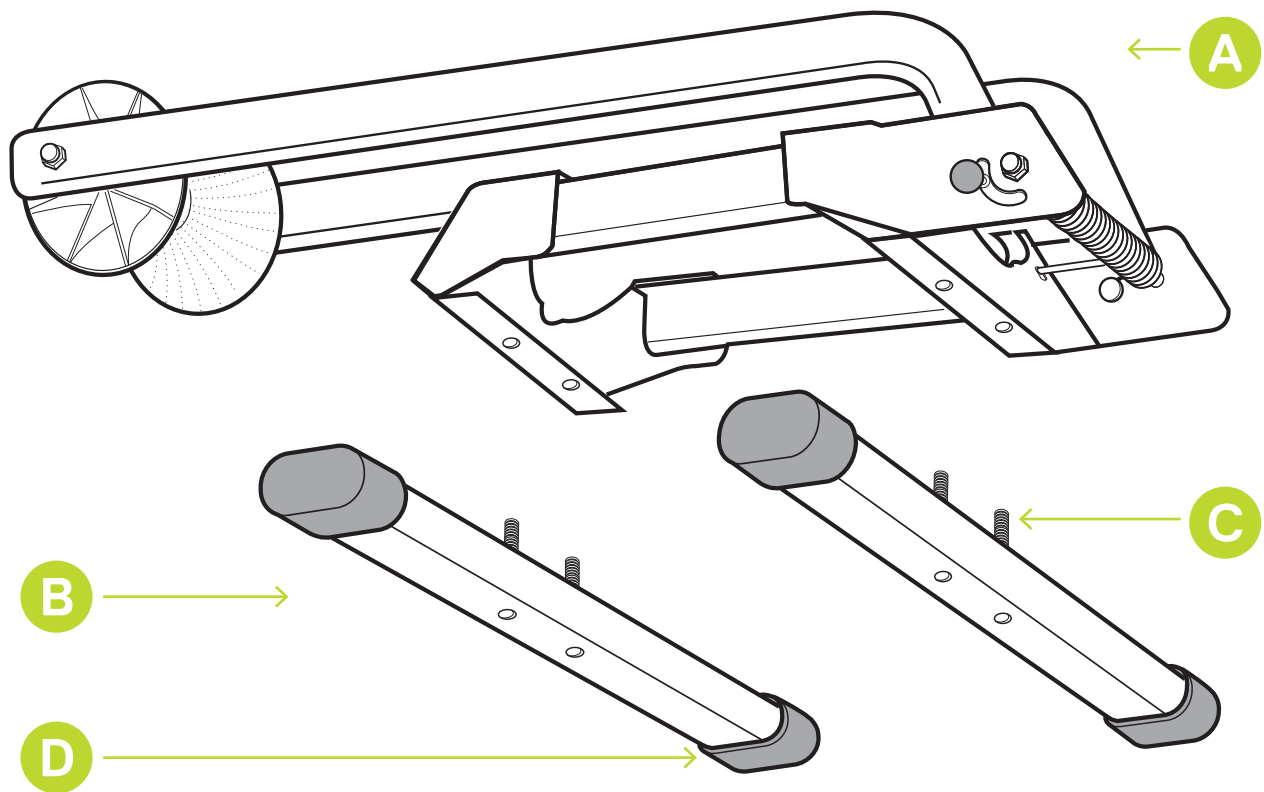


delta<sub>▲</sub>

# Adjustable Spring Floor Stand

Assembly instructions RS8700

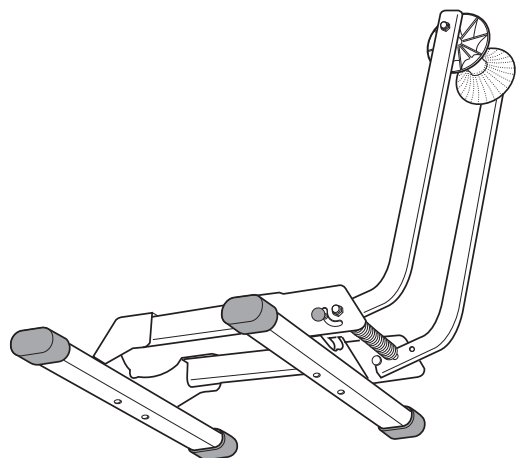


## Parts

- A** x1 — Wheel Holder Assembly
- B** x2 — Base Legs
- C** x4 — Bolts M5 (pre installed)
- D** x4 — Rubber Feet (pre installed)

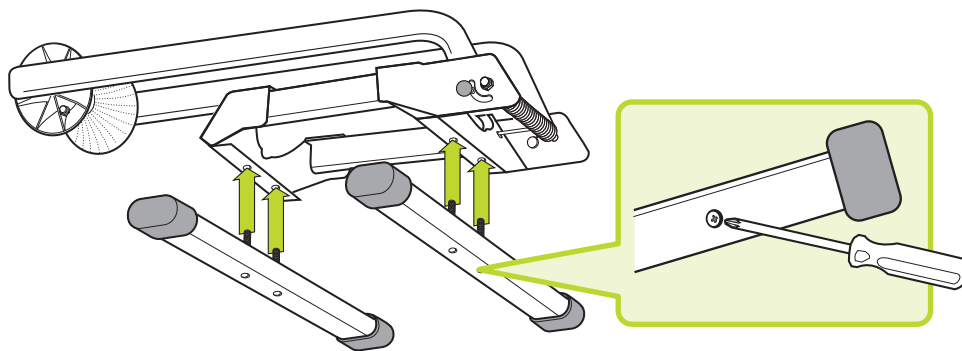
## Tool Required

Phillips Head  
Screwdriver



1

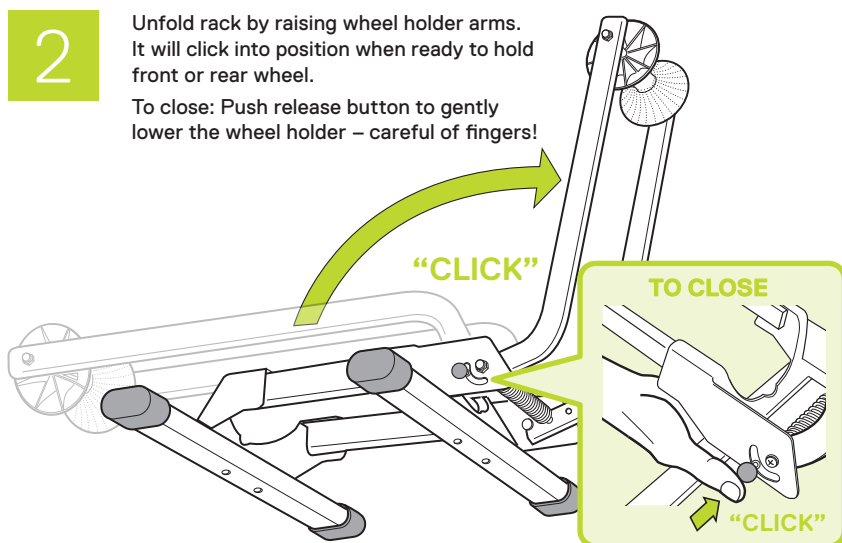
Mount legs to the wheel holder assembly.  
Tighten bolts with screwdriver.



2

Unfold rack by raising wheel holder arms.  
It will click into position when ready to hold front or rear wheel.

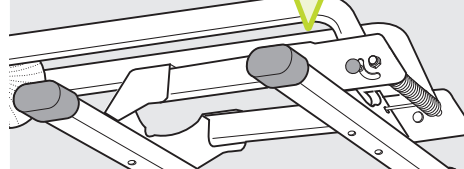
To close: Push release button to gently  
lower the wheel holder – careful of fingers!



## IMPORTANT SAFETY NOTE

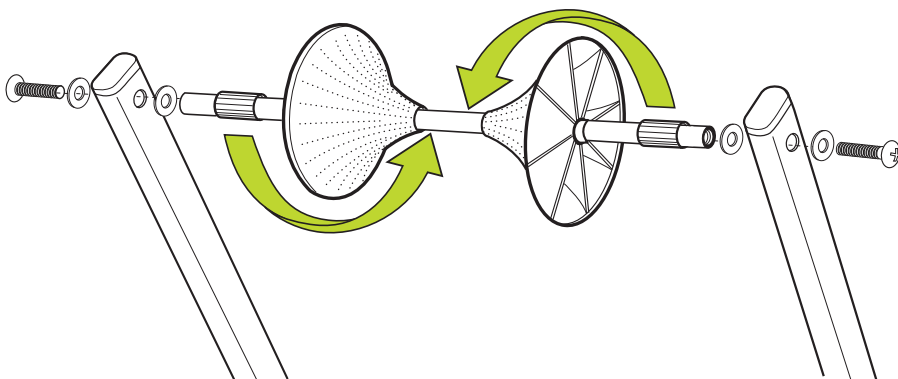
Be careful of fingers when  
releasing wheel holder spring.

CAUTION

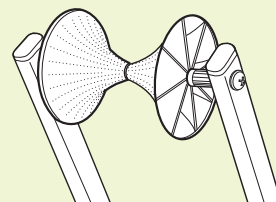


3

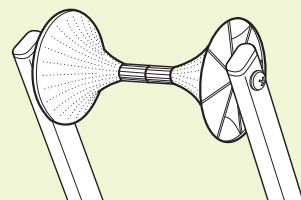
To adjust for widest tires:  
Disassemble rotating wheel guide & reposition ridged spacers as shown.  
Take care to replace all washers in correct position.  
Do not over tighten bolts; allow wheel guides to rotate in place.



Works with most tire widths



For tires wider than 4.5 inches



## Need help?

Email us at [service@designbydelta.com](mailto:service@designbydelta.com)  
& we'll help solve your issue.

## Assembly video

Visit [designbydelta.com/adjustable\\_spring\\_floor\\_stand](http://designbydelta.com/adjustable_spring_floor_stand)

