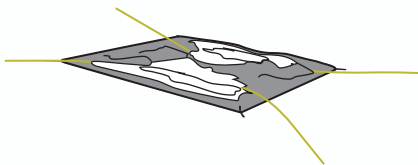


INSTRUCTIONS FOR SETUP

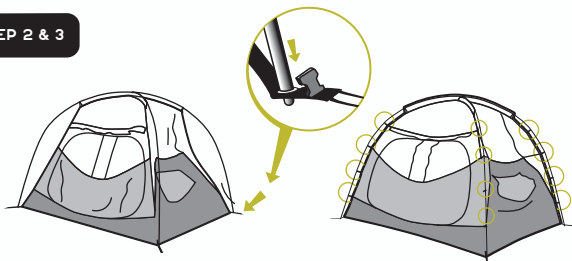
AURORA HIGHRISE™ SERIES

STEP 1



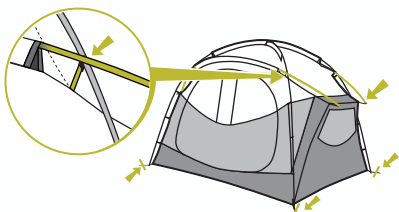
- A.** Find a level area and lay the body of the tent on the ground with the plaid side (floor) facing down. The larger of the two doors is the main entrance: position accordingly. Stake loosely if there is any wind.
- B.** Build your pole set by connecting all segments and ensure that each section is seated properly. Feed the two long main poles through the top pole sleeves so they crisscross and their tips match the four corners. Place the separate, shorter cross poles to the side.

STEP 2 & 3



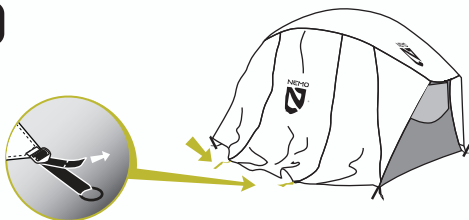
- A.** Insert the locking pole tips into the four corresponding grommeted corner anchors and then attach the inner tent canopy to the poles using the pole clips.

STEP 4



- A.** Slide each cross pole into the pole sleeves above the doors, positioning them on top of the main poles. Insert each pole tip into the grommeted green webbing on the sides of the inner tent.

STEP 5



- A.** Cover the inner tent with the rain fly, keeping the vestibules lined up with the doors. Match the webbing on the corner of the fly with the corresponding color webbing on the inner tent (blue to blue, green to green). To confirm that the rain fly isn't inside out, make sure that the NEMO screen-printed logo and zipper flaps face outward.
- B.** Locate the grommeted webbing on the inside of the fly and attach to the pole tips on either side of the shorter cross poles.
- C.** Secure the poles to the rain fly with the four internal Velcro® pole wraps.
- D.** Locate the webbing straps on the corners of the fly and buckle them to the anchor tent webbing. Moderately adjust the tension in the fly using the webbing straps and ladder lock buckles, saving room for final adjustment.

STEP 6



- A.** Position your tent as desired, preferably with the doors facing toward the prevailing wind direction.
- B.** Secure anchors at each corner by placing the anchor loop around a stake. Pull moderately and pound the stake into the ground with a hard object. If the ground is too hard for stakes, you can tie anchors to rocks or other heavy objects.
- C.** For final tensioning, stake out the vestibules and pull firmly on all adjustable corner anchors and tension lines for a tight setup. To create additional sun cover with an awning, hiking poles can fit into the rings on either side of the door and hold it up.
- D.** Add guylines for additional strength. A properly tensioned tent ensures maximum water shedding and wind resistance!