

PUZZLE TALES

Jumping Guardian / LP202

Attention:

- Please assemble the product according to the guide.
- Please keep the instructions sheet for reference in the future.
- Assemble with glue. Please take off the parts carefully.
- Make sure each part is fixed firmly.



Pattern Side



Blank Side

1

First assemble

1

and then assemble

2

Special attention for mechanism:

- Mechanism is easy to break for much small parts, please don't drop and impact it.
- Don't wind with much big strength.
- Don't touch the roller of mechanism in case of any hurt.

2

Parts List

Item	Round Stick	Round Stick	Round Stick	Rope
Number	P1	P2	P3	P4
Illustration				
	L=19mm	L=25mm	L=45mm	
Quantity	2	2	1	1

Manufacturer:

Robotime Technology(suzhou) Co.,Ltd.
Manufacturer Address
 5# 3rd Floor Building C Ascendas-Xinsu
 Industrial Square, No.5 Xinghan Street, Suzhou,
 China.

Post code: 215021

All our products have been applied for patents and we preserve the right to pursue legal actions against counterfeiting!
Please visit our website:
<http://www.robotime.com>



Glue (excluded)



Special attention in assembly

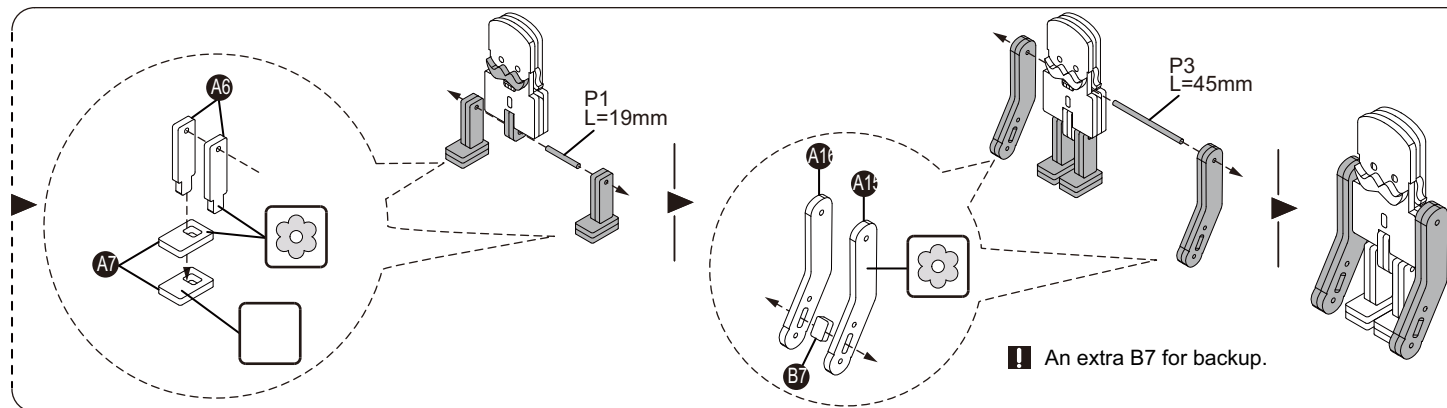
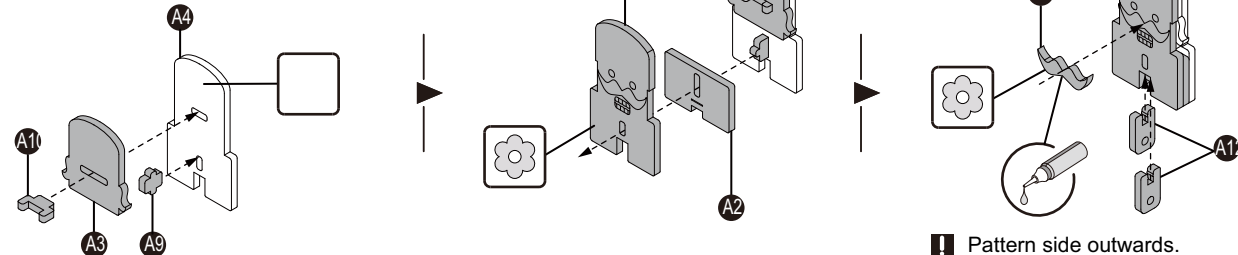


Perspective changed.
 Rotate the product based on the direction of arrow

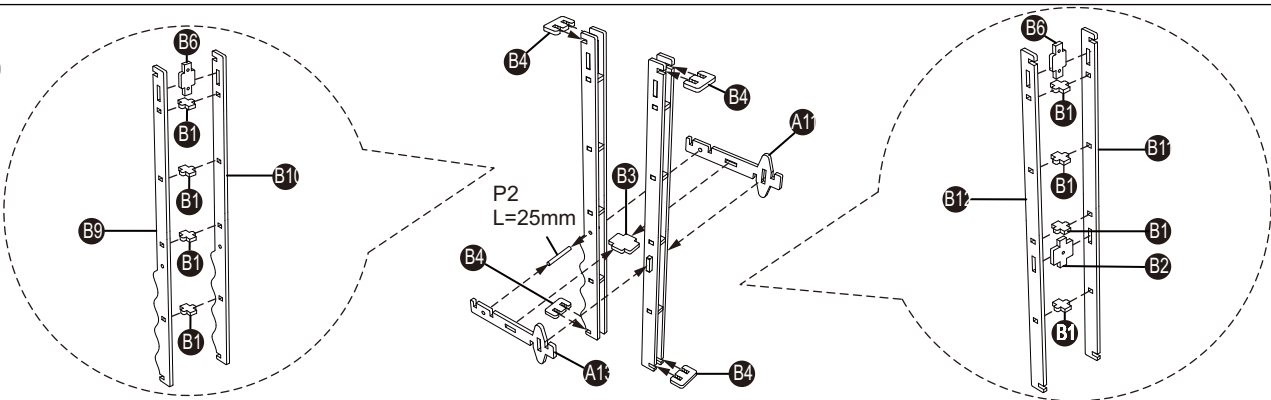
1

Warm tips:

Please snip the diagram of part numbers overleaf for reference.



2



3

