



Pediatric Blended Meals

1.0 cal/mL

Flavor: Squash & Carrot

Plant-based, organic blenderized meal made with whole foods, pea protein, and vitamins and minerals – designed for children 1-13 to help support healthy growth and development.



Features

- Made without common allergens – including milk, eggs, fish, shellfish, tree nuts, peanuts, wheat, soybeans, or sesame
- USDA Organic
- Non-GMO Project Verified
- Kosher
- Gluten free

Created With Your Child in Mind

- Helps increase normalcy during mealtime at school with a kid friendly pouch and a fun design
- Easily go between tube and oral feeds, either on a spoon or drinking directly from the pouch
- Easily connects to common ENFit™ compatible tube feeding devices, reducing prep time and mess
- Flows easily through tubes with minimal manipulation, thinning, or dilution
- Available in 3 delicious flavors: Banana & Blue, Squash & Carrot, and Mango & Straw

Storage and Use

- Prior to use, turn upside down and shake well
- For tube feeding, twist off cap and attach spout to the tube or extension set
- Once opened, keep refrigerated and use within 24 hours
- Store in a dry place
- Do not microwave
- Protect from heating or freezing

Product Specifications

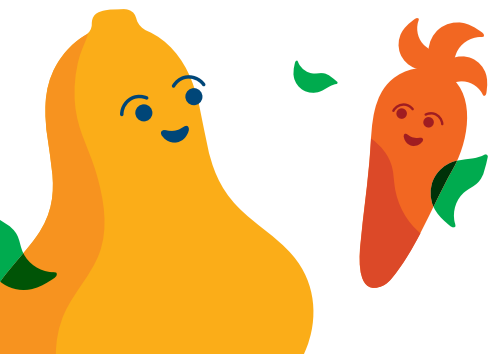
- 9 grams of protein in every serving
- Contains 27 vitamins and minerals, including vitamins A, C, D, and E, and zinc to help support a healthy immune system
- Rich in Vitamin D
- Good source of fiber
- Contains both soluble and insoluble fiber
- Made without artificial or non-nutritive sweeteners
- No added sugar**

Ingredients

Purified Water, Buckwheat Flour†, Butternut Squash†, Carrot†, Purple Sweet Potato†, High Linoleic Sunflower Oil†, Pea Protein†, Apple†, Beet†, **Contains 1.5% or Less of:** Flaxseed Oil†, Medium Chain Triglycerides (MCT from Coconut)†, Rosemary Extract†, **Vitamins and Minerals** (Tricalcium Phosphate, Dipotassium Phosphate, Choline Bitartrate, Calcium Carbonate, Dimagnesium Phosphate, Potassium Chloride, Sodium Ascorbate, Sodium Chloride, Beta Carotene, Calcium Pantothenate, Cholecalciferol [Vitamin D3], DL-Alpha-Tocopheryl Acetate, Ferric Pyrophosphate, Vitamin A Palmitate, Biotin, Chromium Picolinate, Copper Sulfate, Cyanocobalamin [Vitamin B12], Folic Acid, Manganese Sulfate, Niacinamide, Phylloquinone, Potassium Iodide, Pyridoxine Hydrochloride, Riboflavin, Sodium Molybdate, Sodium Selenite, Thiamine Hydrochloride, Zinc Oxide), Inositol, L-Cysteine, L-Carnitine, L-Leucine, L-Lysine Hydrochloride, L-Threonine, L-Tryptophan, Taurine. †Organic

Nutrition Information

Nutrient Composition	Unit	Amount Per Pouch (250 mL)	%Daily Value (250 mL)	Amount Per Liter (1000 mL)
Calories	kcal	250	N/A	1000
Total Fat	g	11	14%	44
Saturated Fat	g	3	15%	12
Trans Fat	g	0	N/A	0
Polyunsat. Fat	g	4	N/A	16
Monounsat. Fat	g	2	N/A	8
Cholesterol	mg	0	N/A	0
Sodium	mg	160	7%	640
Total Carb.	g	28	10%	112
Dietary Fiber	g	3	11%	12
Soluble Fiber	g	1	N/A	4
Insoluble Fiber	g	2	N/A	8
Total Sugars	g	5	N/A	20
Added Sugars	g	0	0%	0
Protein	g	9	18%	36
Vitamin D	IU	300	N/A	1200
	mcg	7.5	40%	30
Calcium	mg	280	20%	1120
Iron	mg	3.5	20%	14
Potassium	mg	410	8%	1640
Vitamin A	mcg RAE	320	35%	1280
Palmitate	mcg RAE	140	N/A	560
Beta Carotene	mcg RAE	180	N/A	720
Vitamin C	mg	15	15%	60
Vitamin E	IU	4.2	N/A	17
	mg	1.9	15%	7.6
Vitamin K	mcg	16	15%	64
Thiamin	mg	0.6	50%	2.4
Riboflavin	mg	0.5	40%	2
Niacin	mg	3.5	20%	14
Vitamin B6	mg	0.6	35%	2.4
Folate	mcg DFE	75	20%	300
Folic Acid	mcg	45	N/A	180
Vitamin B12	mcg	1.5	60%	6
Biotin	mcg	6	20%	24
Pantothenic Acid	mg	2.5	50%	10
Phosphorus	mg	220	20%	880
Iodine	mcg	26	15%	104
Magnesium	mg	80	20%	320
Zinc	mg	1.5	15%	6
Selenium	mcg	10	20%	40
Copper	mg	0.2	20%	0.8
Manganese	mg	0.5	20%	2
Chromium	mcg	9.5	25%	38
Molybdenum	mcg	20	45%	80
Chloride	mg	220	10%	880
Choline	mg	80	15%	320
L-Carnitine	mg	35	N/A	140
Taurine	mg	35	N/A	140
Inositol	mg	20	N/A	80



Questions?

Contact our Customer Care team by visiting katefarms.com/contactus

* Independent plant-based formula survey.
 ** Not a low-calorie food. See nutrition information for calorie and sugar content.
 Not suitable for infants less than 1 year old. • Patent pending

