

phil&teds[®]
adapt&survive![™]

dash[™]
instructions

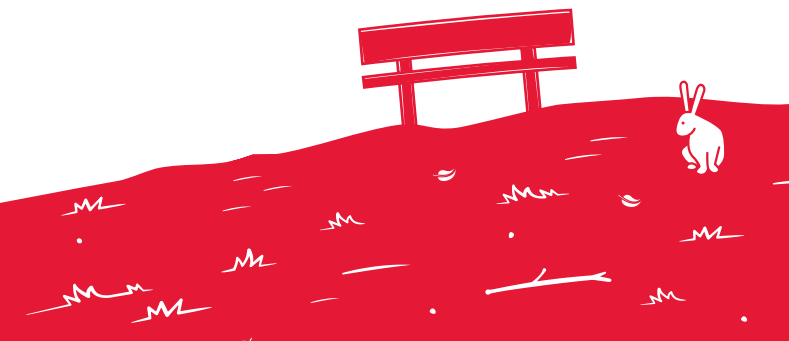
IMPORTANT:

**This document contains instructions
and must be kept for future reference.**

Please read thoroughly before use.

please register your product
purchase online now at
philandteds.com/register







cleaning ~ caring

check dash™ for cuts ~ bruises. if your product is damaged in any way, or you're not sure how to use it, please consult our web support (www.philandteds.com/support). here you can get in touch with a local customer care team, made of real live people.

caring for dash™

unlike your children, your dash™ likes to stay clean.

- code brown got you down? never fear! dash™ fabric can be sponge cleaned with warm water, using mild natural soap. do not use detergents or bleach on dash™.
- improper care will void any warranties. do not use dash™ if deterioration is detected or suspected.

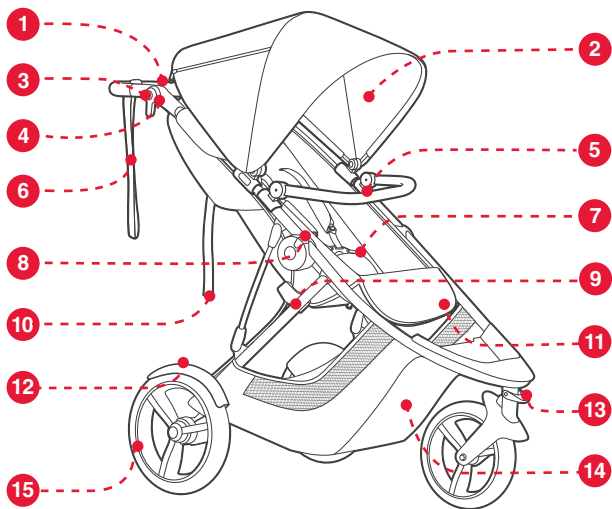
important information

aeromaxx tyres™

- tyres are not under warranty, however dash™ uses *aeromaxx*™ tyres which are immune from punctures ~ eliminate the need for tube replacements.



for more information on caring for your dash™, visit philanteds.com/support





- 1 handlebar
- 2 sunhood
- 3 brake
- 4 handlebar adjustor
- 5 bumper bar
- 6 wrist strap
- 7 harness
- 8 fast fold
- 9 frame lock
- 10 seat recline strap
- 11 adjustable foot rest
- 12 rear guards
- 13 front wheel lock
- 14 parcel tray
(max load 10kg / 22lbs)
- 15 aeromaxx wheels



- | | | | |
|----|--|----|--|
| 1 | guidon multi positions | 1 | Mehrfach verstellbarer Griff |
| 2 | Capote | 2 | Sonnenverdeck |
| 3 | frein à main d'un seul geste | 3 | One-Touch-Bremse: am Griff |
| 4 | Ajustement du guidon | 4 | Verstell-mechanismus der Schiebestange |
| 5 | repose mains amovible | 5 | abnehmbarer Buggybügel |
| 6 | dragonne de sécurité | 6 | Sicherheitsarmband |
| 7 | Harnais 5 points standard | 7 | 5-Punkt-Sicherheitsgurt |
| 8 | pliage rapide | 8 | Schnelles Zusammenklappen |
| 9 | clip de verrouillage | 9 | Rahmenverschlussclip |
| 10 | Sangle qui permet de mettre le siège en position allongé | 10 | Verstellgurt zur Sitzneigung |
| 11 | Repose pied ajustable de la poussette | 11 | verstellbare Fußstütze |
| 12 | Garde boue | 12 | Schutzbleche |
| 13 | Verrou pour la roue avant | 13 | Vorderradsperr |
| 14 | Large panier de rangement (10kg / 22lbs) | 14 | großes Gepäckfach (10kg / 22lbs) |
| 15 | aeromaxx roues | 15 | aeromaxx Räder |



- | | | | |
|----|---|----|---------------------------------------|
| 1 | manillar | 1 | duwbeugel met meerdere standen |
| 2 | Capote | 2 | Achterover |
| 3 | freno en el manillar/Freno de un solo toque: en el manillar | 3 | Rem met één beweging: op duwbeugel |
| 4 | Ajuste del manillar | 4 | duwstang versteller |
| 5 | barra protectora delantera desmontable | 5 | afneembare beschermbeugel |
| 6 | correa de seguridad para la muñeca | 6 | veiligheid polsband |
| 7 | arnés de seguridad de 5 puntos | 7 | 5-puntsveiligheidsgordel |
| 8 | Plegable con un solo brazo | 8 | Snel in te klappen |
| 9 | seguro del chasis | 9 | framevergrendelingsclip |
| 10 | correa de ajuste para reclinar la silla | 10 | verstelriempje voor rugleuning |
| 11 | Reposapiés regulable | 11 | verstelbare voetensteun |
| 12 | guardabarros | 12 | spatborden |
| 13 | seguro de la rueda delantera | 13 | voorwiel lock |
| 14 | Gran cesta (10kg / 22lbs) | 14 | Grote boodschappenmand (10kg / 22lbs) |
| 15 | aeromaxx ruedas | 15 | aeromaxx wielen |



max load
25kg / 55lbs



max load
9kg / 20lbs



C1 max load
15kg / 33lbs

C2 max load
9kg / 20lbs



D1

max load

15kg / 33lbs*

*parent facing mode

is for single use only



E1

max load

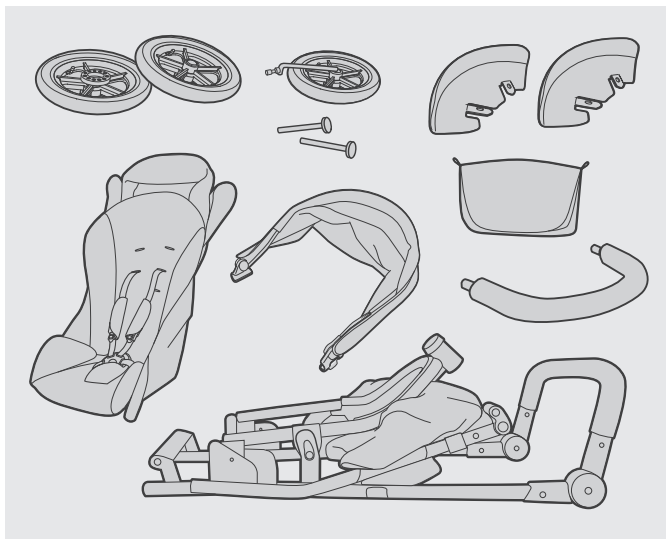
15kg / 33lbs

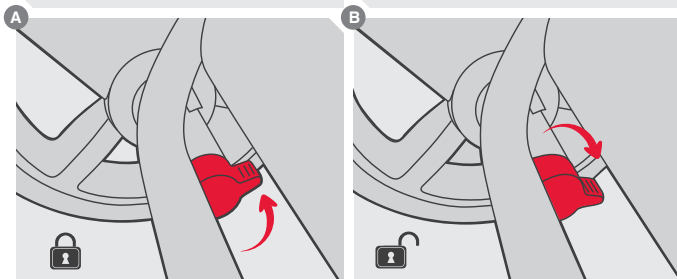
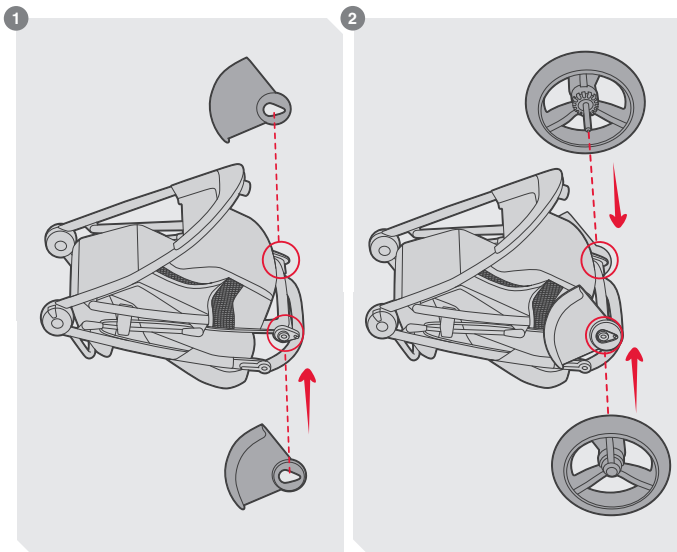
E2

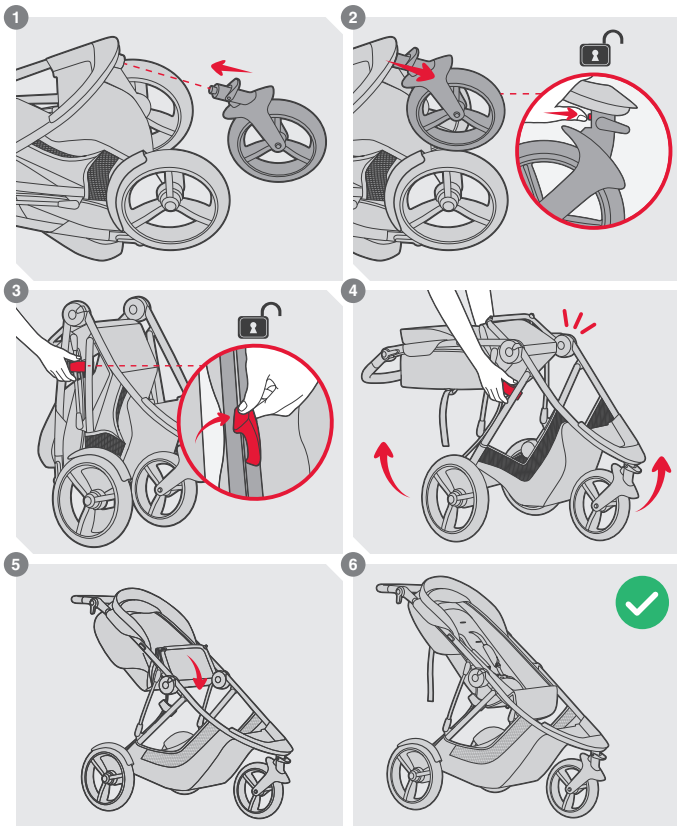
max load

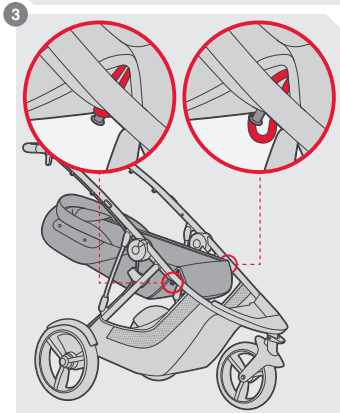
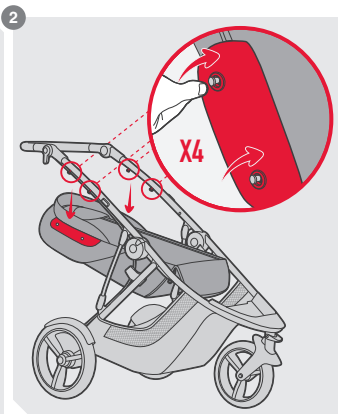
20kg / 44lbs







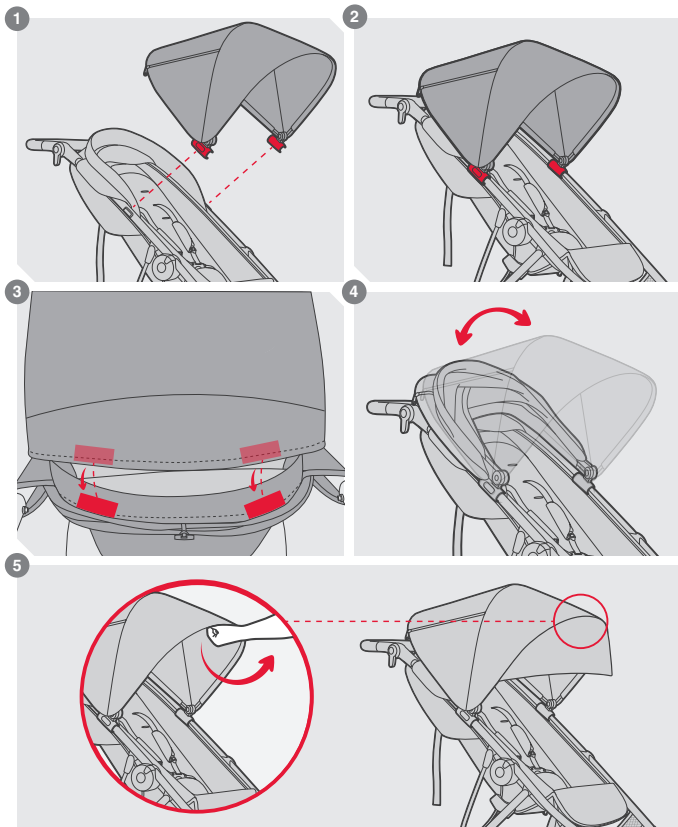






max load

25kg / 55lbs

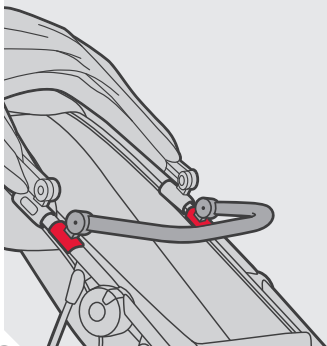




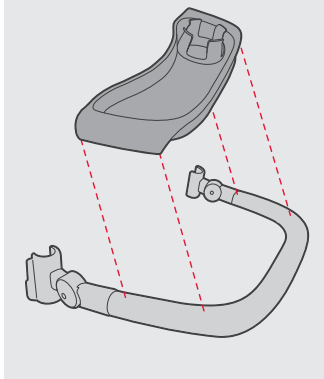
1



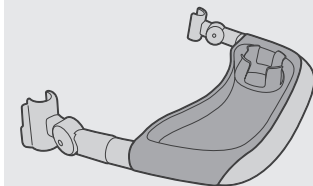
2



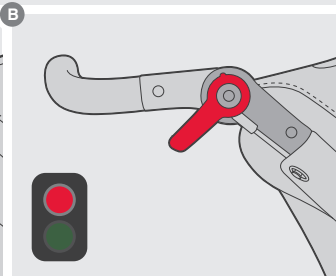
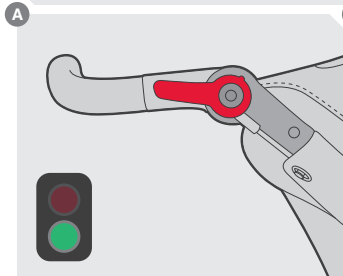
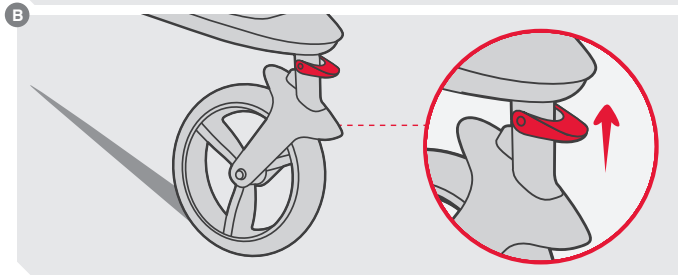
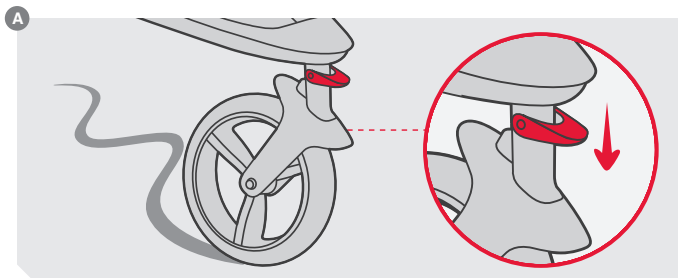
3



4

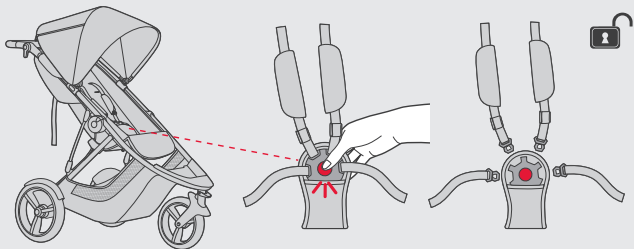


*food tray not included

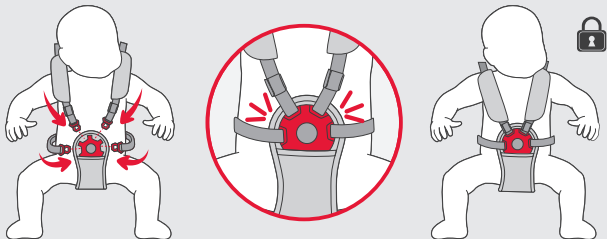




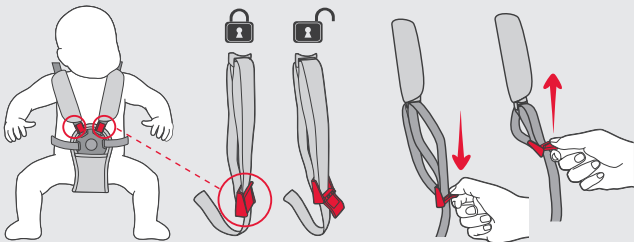
1

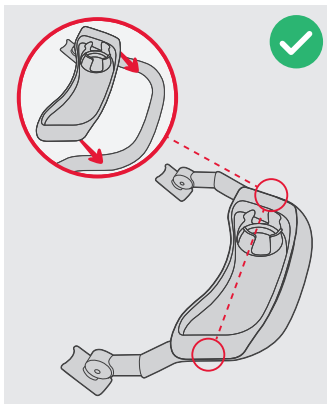
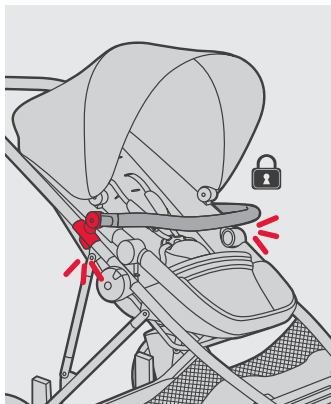
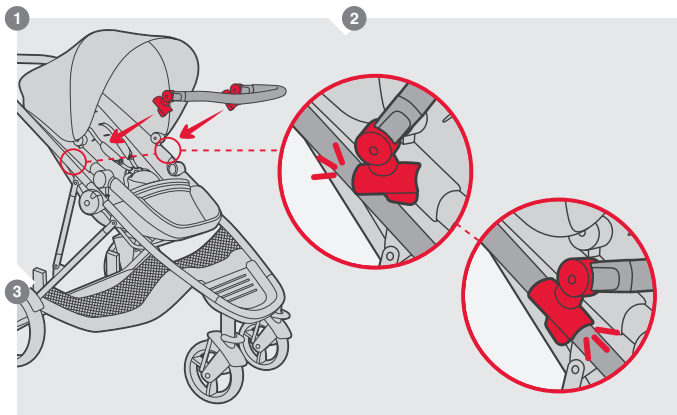


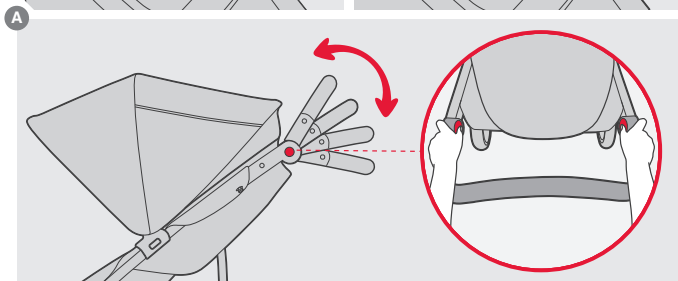
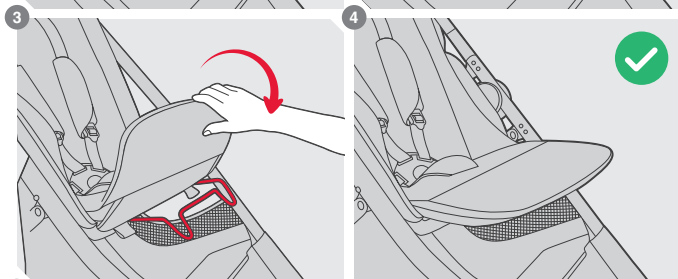
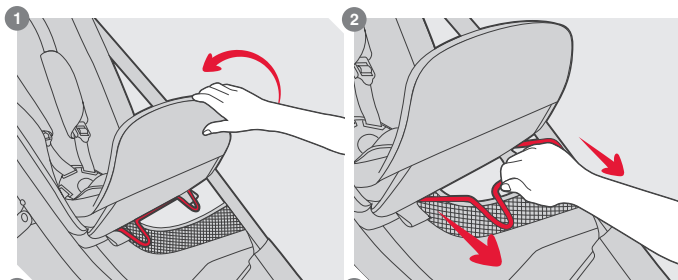
2

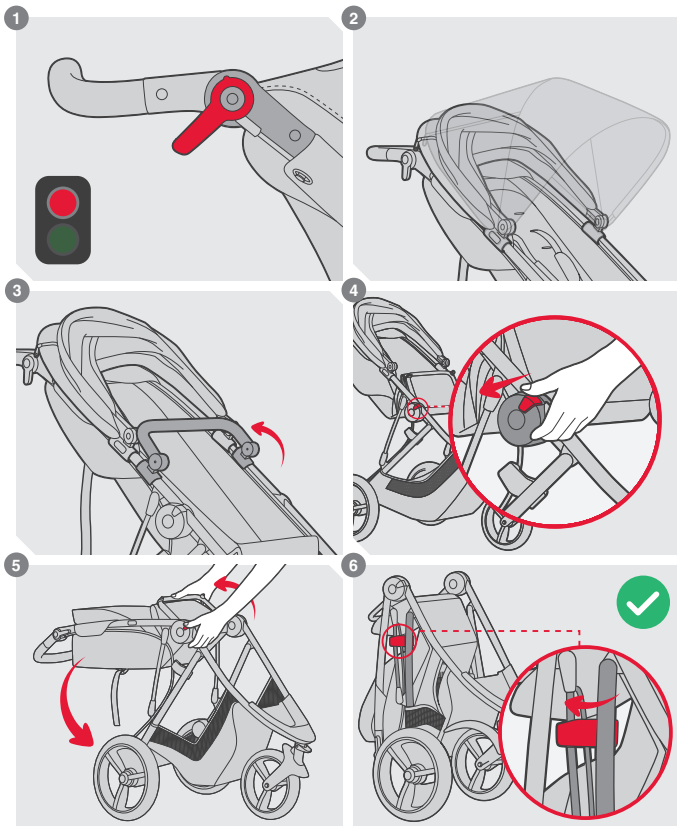


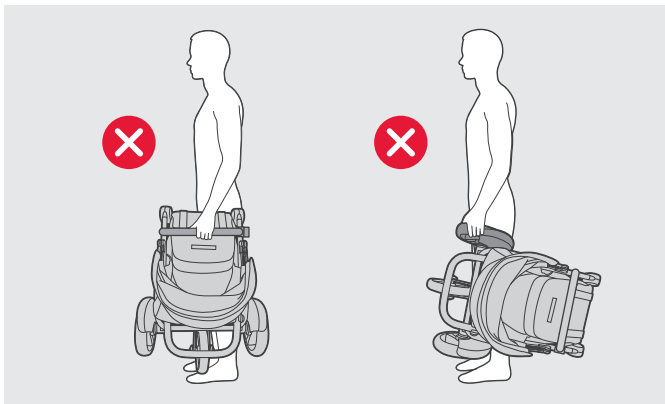
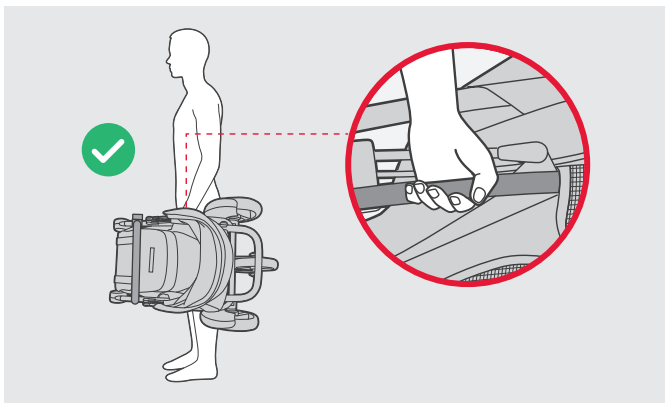
3













1



2



3

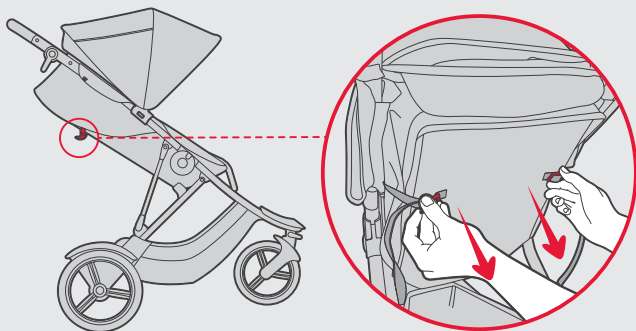




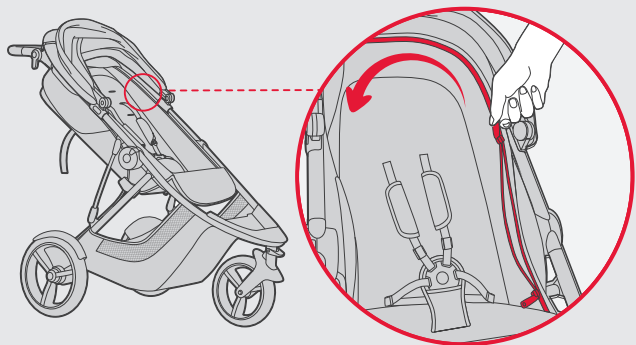
max load
9kg / 20lbs



1

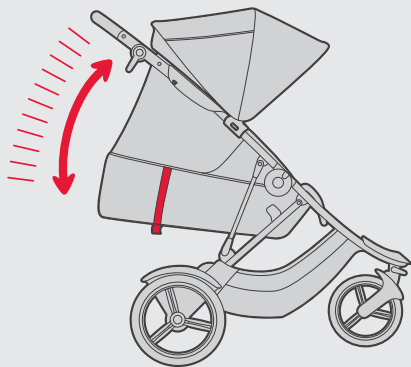


2

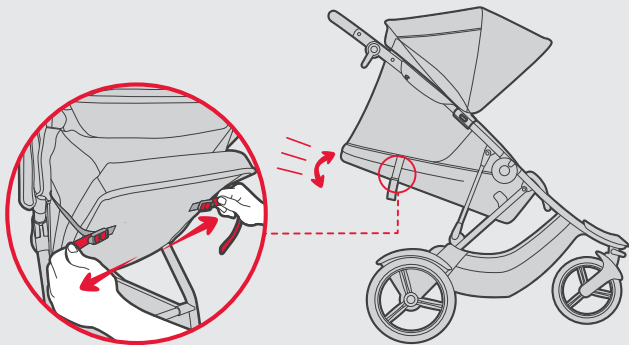


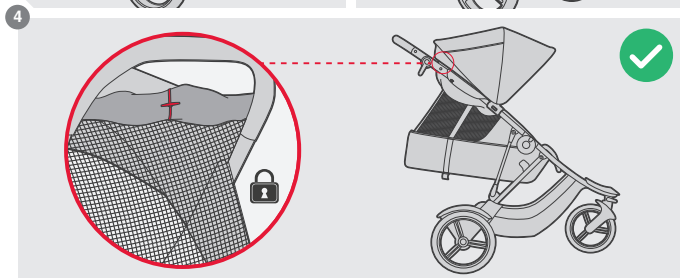
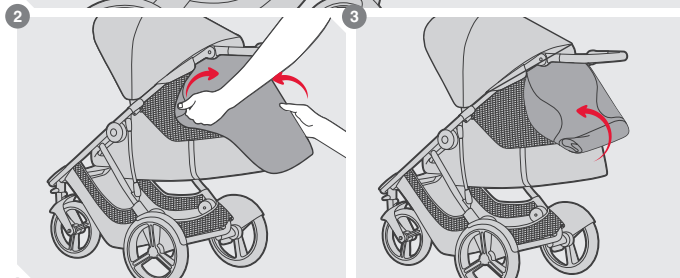
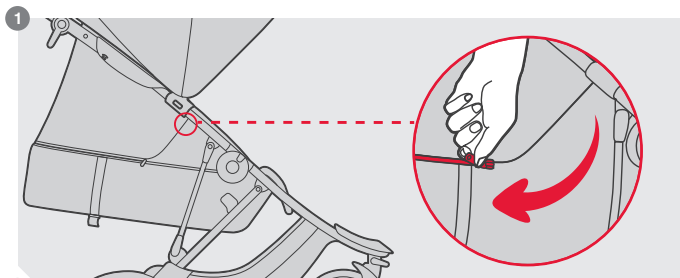


3



4

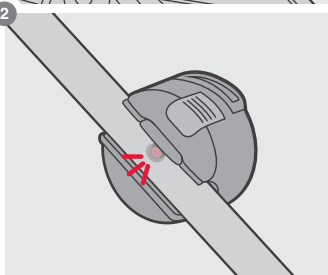
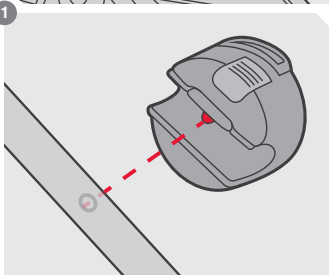
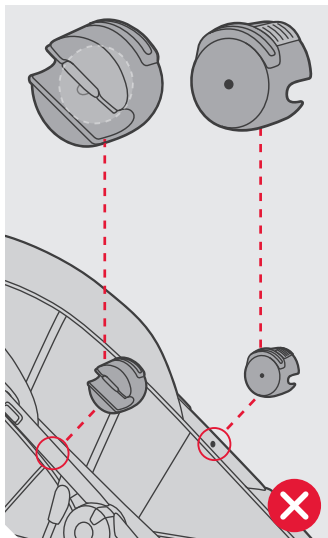
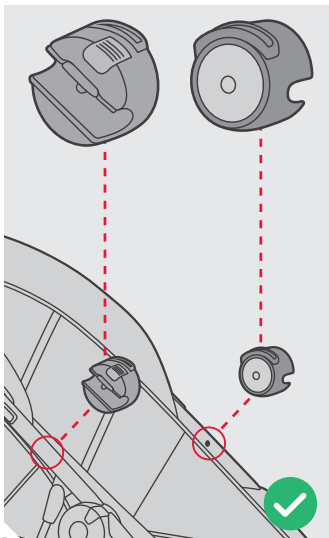






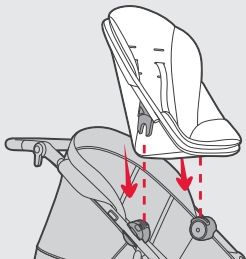
C1 max load
15kg / 33lbs

C2 max load
9kg / 20lbs





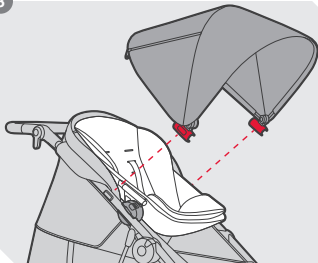
1



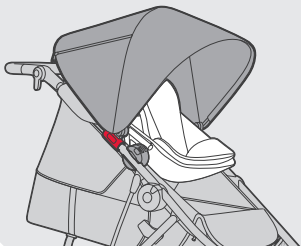
2



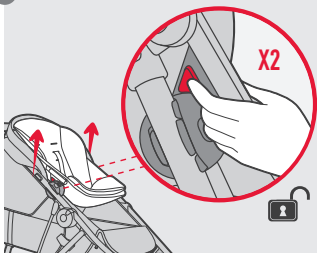
3



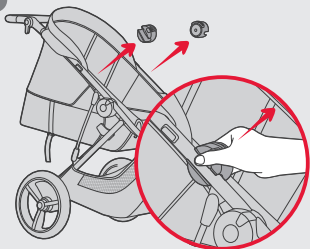
4



1



2







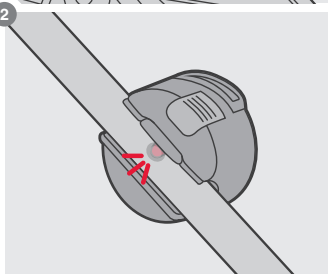
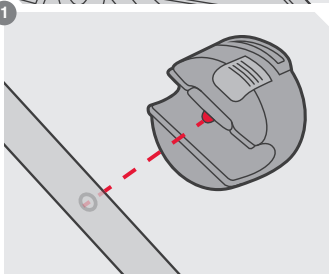
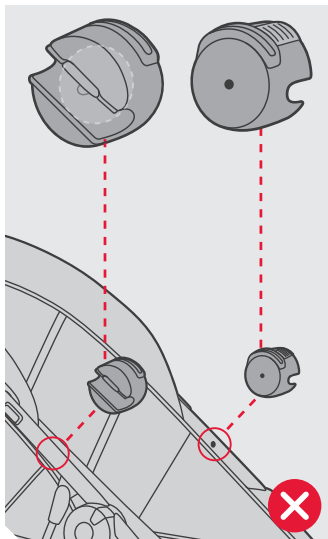
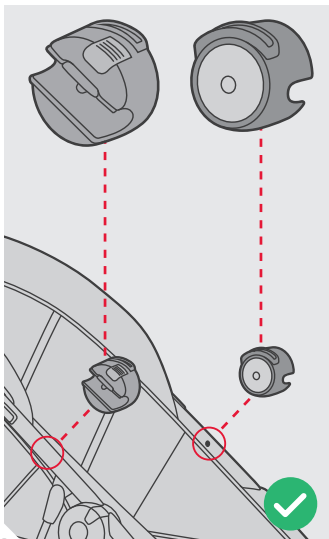
D1

max load

15kg / 33lbs*

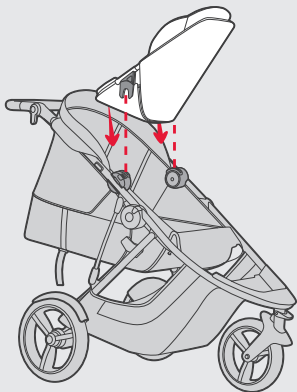
*parent facing mode

is for single use only





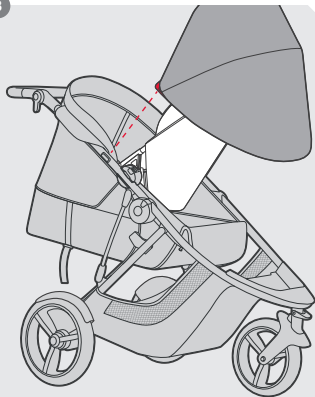
1



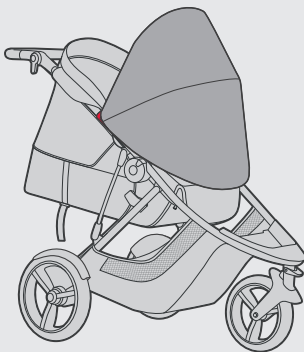
2

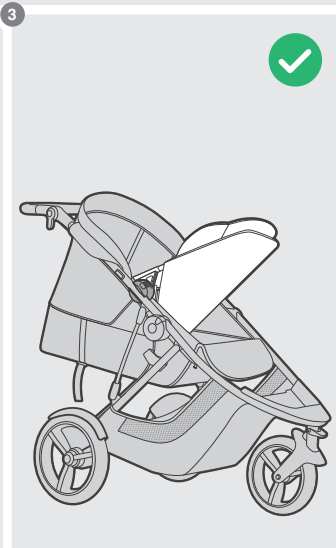
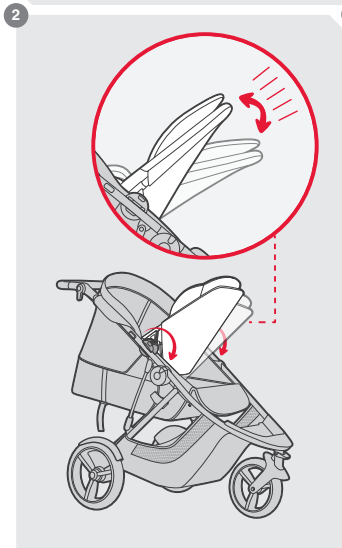
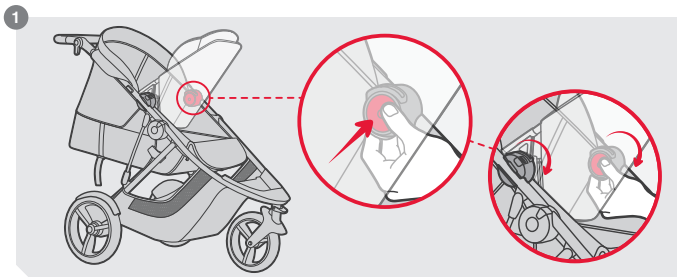


3



4

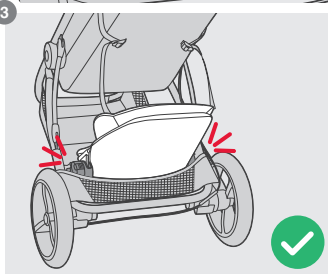
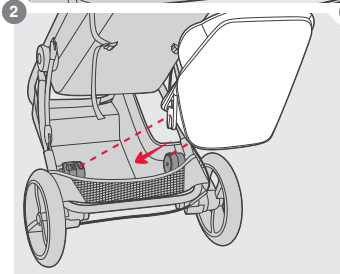
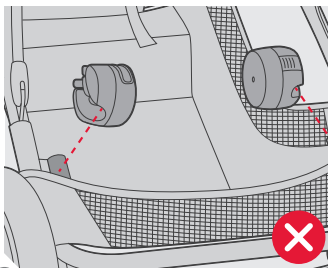
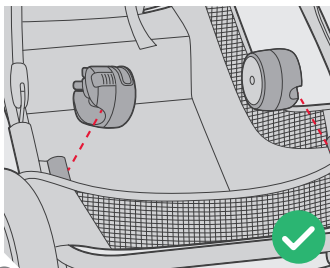
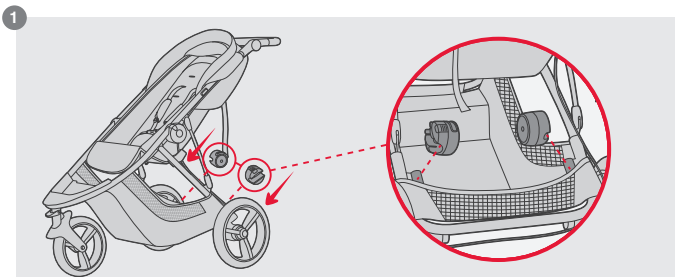






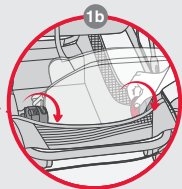
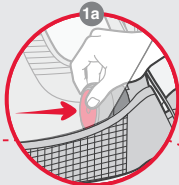
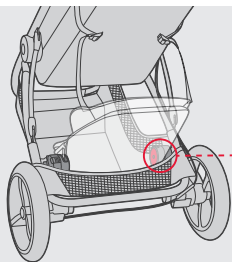
E1 max load
15kg / 33lbs

E2 max load
20kg / 44lbs

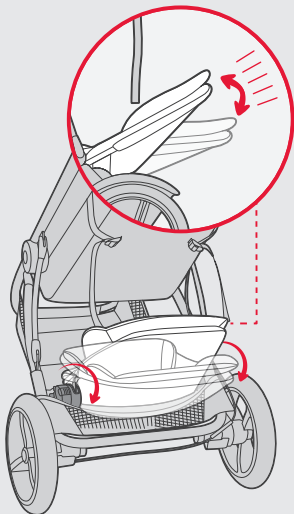




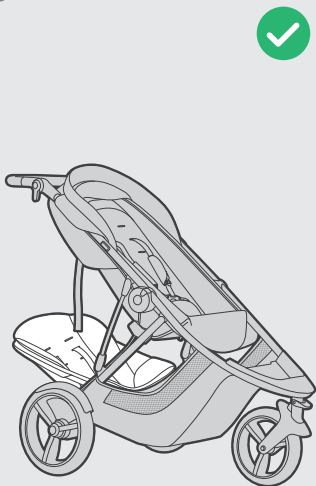
1

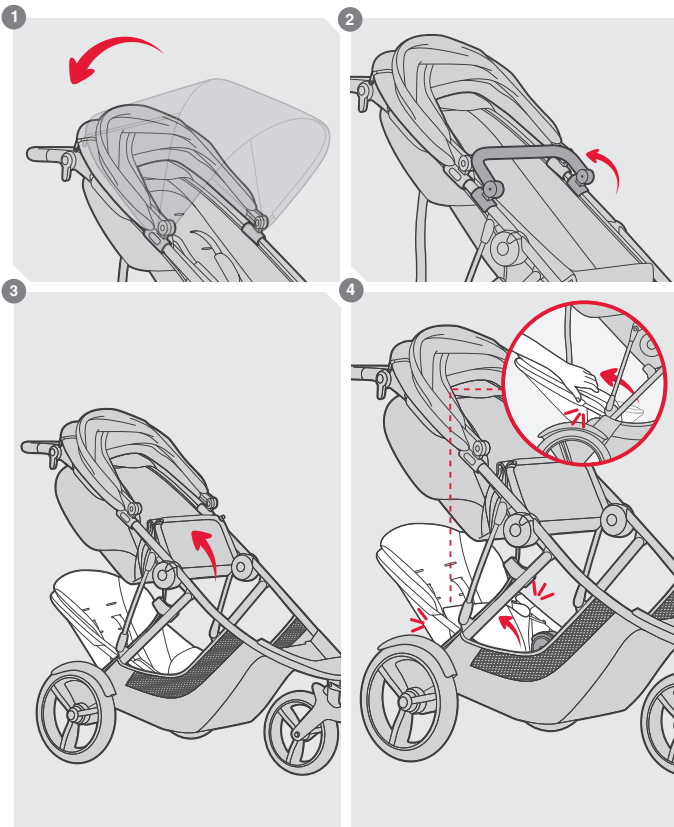


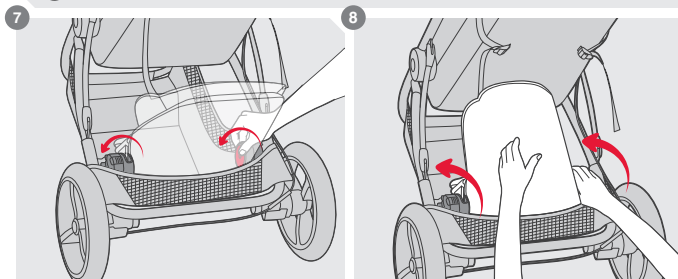
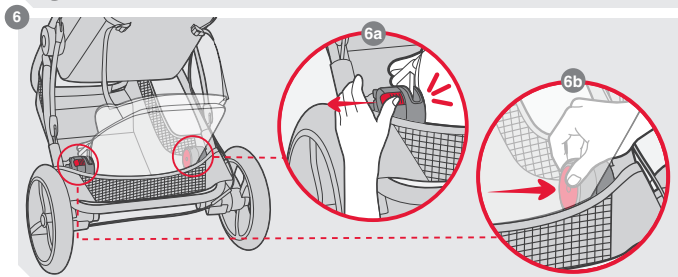
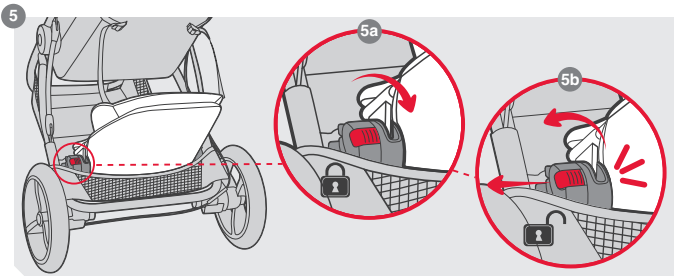
2



3

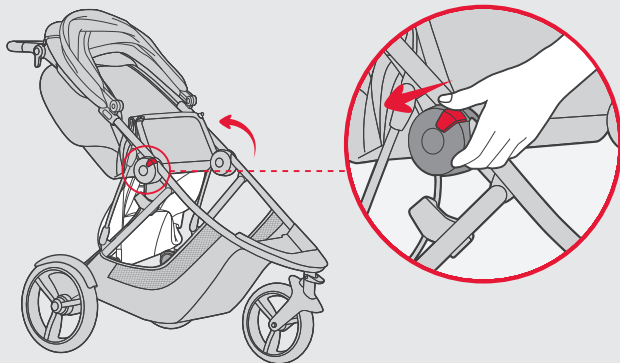




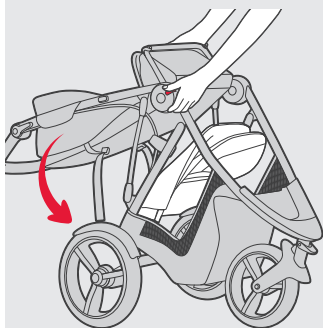




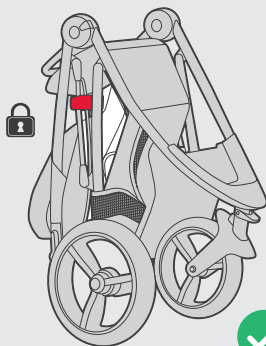
9



10



11





AUS/NZL

phil&teds
102-112 Daniell Street
Newtown, Wellington 6021
New Zealand
+64 4 3800 833

USA/CAN

phil&teds USA Inc
221 Jefferson Street
Fort Collins, CO 80524
USA.
+1 800 839 4985

GBR

phil&teds UK
71-73 Victoria St
Windsor, Berkshire
SL4 1EH, United Kingdom
+44 20 3051 9264

EUR/FRA

phil&teds Spain
Calle Linaje, 3
Malaga 29001,
Spain
+34 91 290 14 82

CHN

phil&teds China
No.10 East Chuangyeyuan
Road, Yangzhou
China
+86 514 8763 4533

Designed in New Zealand. Made in China
Conçu en Nouvelle-Zélande. Fabriqué en Chine

Conforme aux exigences de sécurité

8170-05