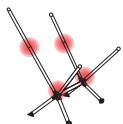


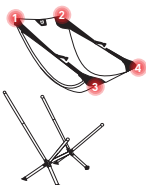
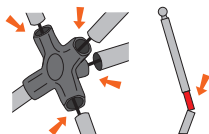
INSTRUCTIONS FOR SETUP

To contact NEMO Customer Service
Email: journey@nemoequipment.com
Phone: 800-997-9301



1. Assemble Frame

On level ground, assemble the shock-corded frame, making sure to completely join poles together and insert fully into the hubs.



2. Assemble Seat

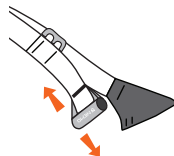
Locate the top two corners of the seat. Align the corners with the ball ends at the top of the frame and snap into place to connect. Repeat at bottom two corners to fully connect the seat.

NOTE: It is easier to assemble with the seat adjustments in the reclined position.



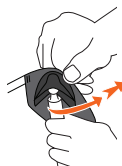
3. Recline and Relax

Located on each side of the chair, pull the handles back to recline. To sit up, push handles forward while sitting up for desired support.



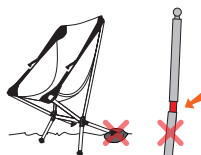
4. Disassemble

With the seat in the reclined position, rotate each corner connection away from the seat to easily pop off the frame.



Warnings

Use chair on stable and level ground.
Completely join poles together and insert fully into hubs.
Ensure hardware is properly attached.
Always test the chair before applying full weight.
Do not aggressively sit or jump in the chair.
Do not permit children to use unattended.
Max Capacity: 300 lbs / 135 kg



©2021 NEMO Equipment, Inc.

Remember to Leave No Trace. Before leaving your campsite, take a thorough look around making sure you have not left anything behind, out of place, or damaged.

MOONLITE™
RECLINING CHAIR