




ISOFIX

The ISOFIX complies with requirements applicable in market of sale. For rights & remedies, and important online product registration please visit:

www.mountainbuggy.com/register

 mountainbuggy.com

Congratulations on choosing your new car seat isofix base!



Features



Instructions



Configurations



Product Care



Safety Warnings



GENERAL INSTRUCTIONS

Group 0+

Suitable for birth to 13kg.

THIS DOCUMENT CONTAINS IMPORTANT INFORMATION AND MUST BE KEPT WITH THE SEAT FOR FUTURE REFERENCE.

This product should be used rearward facing until the child is too large for the seat or exceeds 13kgs.

This product should never be used forward facing.

CLEANING & CARING

Check your car seat for cuts & bruises. If your product is damaged in any way, or you're not sure how to use it, please consult our web support from where you can access a local customer care team.

Caring for your car seat

Unlike children, your car seat likes to stay clean.

Cleaning the fabric cover:

- Read the label on the removable cover for washing instructions.
 - Hand wash in warm water only.
 - DO NOT tumble dry.
 - The fabric cover can be easily removed for washing.
1. Remove the harness by gently feeding it through from the front to the back of the seat.
 2. Next remove the crotch strap, including buckle, by rotating it a quarter turn and feeding it out through the seat shell. The cover should now be free of obstruction.
 3. Remove the cover and machine wash it at 30°C; line dry only.
 4. To replace the cover follow the instructions above in reverse.



Cleaning the harness, chest pads and seat:

- Sponge clean only. Use hand soap and warm water.
- DO NOT attempt to remove the harness straps from the seat when cleaning. It is unnecessary and dangerous to do so.
- DO NOT use solvents, detergents or washing up liquids as these may weaken the harness and seat.
- DO NOT lubricate or oil any part of the seat.
- DO NOT wring.
- Dry thoroughly before storage.
- Store in a well ventilated space, away from direct sunlight which could damage or fade your product.
- Store in a safe place when it is not being used. Avoid placing heavy objects on top of it.
- DO NOT allow to come into contact with corrosive substances e.g. battery acid.

The correct use and maintenance of your carseat will ensure it gives long and trouble free use. When somebody else is using your car seat, ensure that they also know how to use it and especially the correct way to adjust it. The safety of your child is your responsibility.

IMPORTANT

Please read thoroughly before commencing installation as an incorrect installation could be dangerous.

1. This is a "Universal" child restraint; it is approved to ECE Regulation 44.04 for general use in vehicles and will fit most, but not all, vehicle seats.
2. A correct fit is likely if the vehicle manufacturer has declared in the vehicle handbook that the vehicle is capable of accepting a "Universal" child restraint for this group.
3. This child restraint has been declared "Universal" under more stringent conditions than those applied to earlier designs which do not carry this notice.
4. If in doubt, consult Mountain Buggy or a retailer.

Extreme Hazard

- Do not use in passenger seats equipped with airbags.

Vehicle seat belt requirements

- Your child seat can only be installed using a three-point lap and diagonal seat belt in the rear passenger seats of the car.



WARNINGS

- PLEASE READ THOROUGHLY BEFORE COMMENCING INSTALLATION AS AN INCORRECT INSTALLATION COULD BE DANGEROUS.
- THIS CHILD SEAT SHOULD NOT UNDER ANY CIRCUMSTANCES BE USED ON A PASSENGER SEAT EQUIPPED WITH AN AIRBAG.
- The child seat must only be installed in a rear facing position.
- Never use the child seat without fastening the child's harness correctly, and never attempt to use it without fastening it into the car as described in these fitting instructions. If the height of the shoulder straps is not ok please re-install the seat with the straps in the appropriate locations.
- It is important that the seat belt be correctly routed and the child seat held down on the upholstery as firmly as possible to ensure maximum protection for the child occupant. A recommended method is shown in these instructions.
- Do not add to or modify this product in any way.
- Never use this child seat if it has been in an accident or become badly worn. Periodically inspect the harness for wear, paying particular attention to attachment points, stitching and adjustment devices.
- Do not leave a child in the seat unattended at any time.
- Ensure that no part of the seat or seat belt is trapped in a door or a folding seat. If your car has a folding rear seat, ensure that it is correctly latched in its upright position.

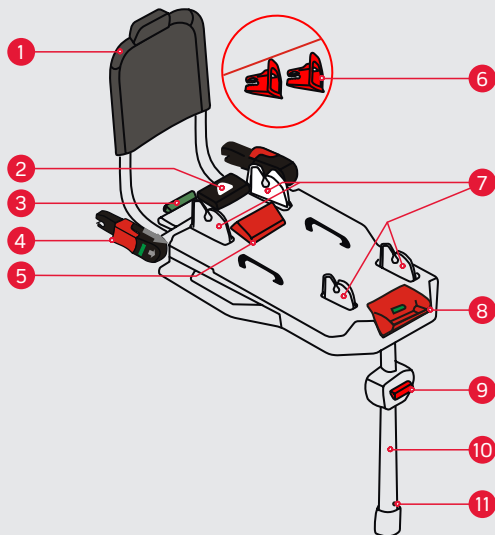


- A car's interior can become very hot if the car is left parked in direct sunlight. It is therefore recommended that the child seat, when not in use, is covered by a towel etc. This prevents components, particularly those attached to the child seat, becoming hot and burning the child.
- In the event of an emergency it is important that the child can be released quickly. This means that the buckle is not fully tamper proof and a child occupant should be persuaded never to play with the buckle.
- Luggage and other heavy objects should be secured in the car. Loose objects are liable to cause injury in the event of an accident.
- The child seat must not be used without the fabric cover.
- Never place your child seat on a table or work surface.
- This seat can be used for children of 0 -13kg in weight and in conjunction with a 3-point lap and diagonal safety belt in the rear-facing position only.
- When the child seat is not in use it is recommended that it is fastened into the car with a seat belt to avoid it flying loose and causing injury in the event of an accident.
- In an emergency your child can be released quickly by pressing the red button on the harness buckle.
- Store this child seat in a safe place when it is not being used. Avoid placing heavy objects on top of it.
- If you travel with passengers using both the front and rear passenger seats, the lighter occupants should be in the rear

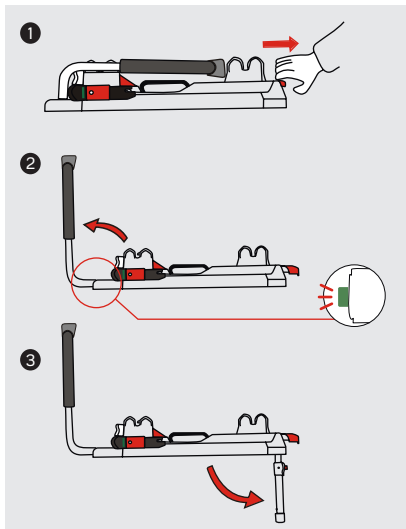


and the heavier occupants in the front of the vehicle.

- Do not allow your child seat to come into contact with corrosive substances e.g. battery acid.
- Do not leave the child seat with a child in it on a raised surface, such as a table work top, bed or shopping trolley, due to the risk of falling.
- The manufacturer can only guarantee the safety of the seat if it is used by the original owner and according to the instructions.
- We strongly advise against using a secondhand product, as you can never be sure of its history.
- Always check to make sure the seat fits in your car properly before purchasing it.
- This seat cannot be used as a rocker.
- The car seat is only suitable for use in vehicles fitted with 3 point safety belts, approved to UN/ECE regulation 16 or equivalent standards.
- After an accident this product and your car seat belts should be replaced. They may not look damaged but in the event of another accident, this product and your car seat belts may not be able to protect your child as well as they should.
- When fitting the belt, it may become gathered or bunched. Ensure the belt is firm and there is no slack.
- Do not use this product without the fabric cover.
- Do not make any alterations or addition to the product.



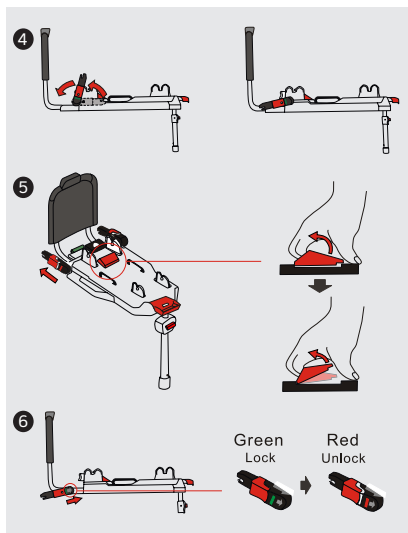
- 01 Roll bar
- 02 Isofix release button
- 03 Green button
- 04 Isofix connectors
- 05 Flat handle
- 06 Isofix guides
- 07 Car seat receivers (4)
- 08 Pull Handle
- 09 Leg release button
- 10 Leg
- 11 Leg indicator



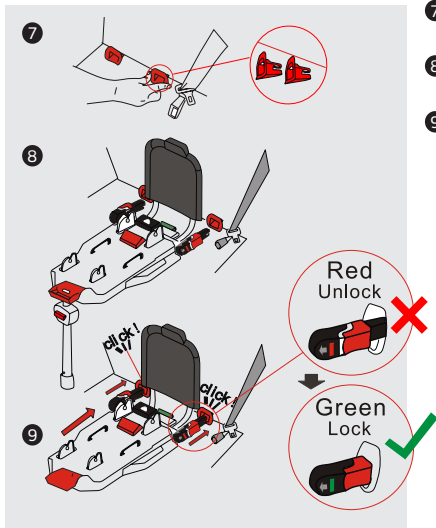
WARNING: To install the ISOFIX CHILD RESTRAINT SYSTEM read the instruction manual carefully as the safety of your child is at stake. It is important that you take the time to read these instructions carefully.

Check that the ISOFIX CHILD RESTRAINT SYSTEM has been installed correctly.

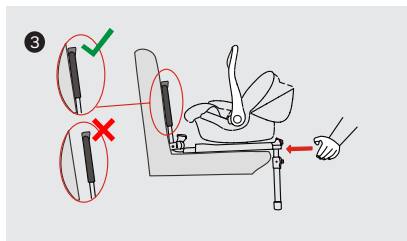
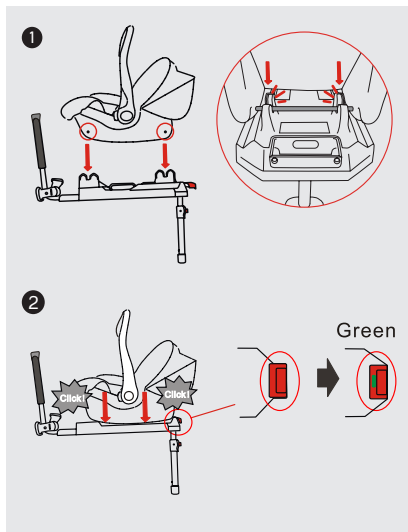
- 1 Locate the red pull handle and pull until you hear a "click".
- 2 Adjust the vertical platform to the upright position until you hear a "click" and the green button is extended. Check that the platform is locked in the vertical position and will not fall back down.
- 3 Extend the support leg (beneath the base) into the vertical position.



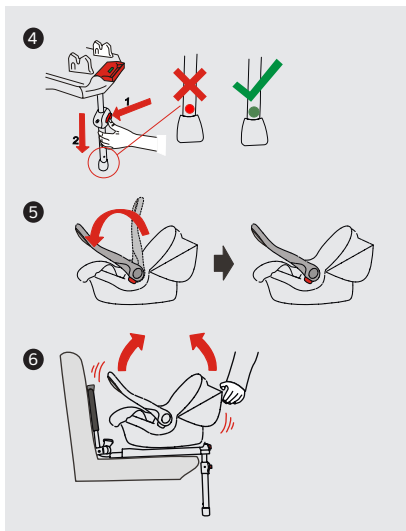
- 4 Press down on the white isofix release button located in middle of the isofix connector cross bar and rotate the isofix connectors out until you hear a "click". Check that the isofix connectors are moving within an angle of 15degrees only, and cannot rotate fully.
- 5 Pull up on the red flat handle, and ensure that the isofix connectors are fully extended.
- 6 Pull the black plastic cover of the isofix connectors back to reveal the small window beneath. Red indicates that they are unlocked.



- 7** Put the isofix guides over the isofix anchors in the vehicle seat.
- 8** Place the isofix base on the vehicle seat and align the isofix connectors with the isofix anchors.
- 9** Push the isofix base onto the car's anchor points and ensure you hear a "click, click". To ensure that the connectors are correctly locked in place check that you can now see green through the windows on the sides of the connectors.

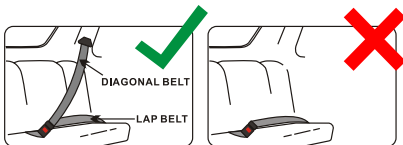


- 1 Place the car seat in the correct position on the isofix base. Position the car seat in a rear facing position.
- 2 Click the child seat onto ISOFIX BASE until you hear "Click". Ensure that the car seat is fully locked on the ISOFIX BASE, front and back.
- 3 Push the baby car seat towards the backrest of the seat of car until the vertical platform of the isofix base is firmly against the seat of car.



- 4 Press the red button on the support leg and extend it to the floor of the car. Check that you can see a green indicator within the lower part of the support leg and that the red button has reset (popped back out).
- 5 Adjust the child seat carry handle against the backrest of the car's seat, ready to place a baby into the child seat.
- 6 Test car seat is secure in Isofix base by pulling up and forward on the car seat.





WARNING:

This car seat can only be fitted into the passenger seat of a car with a lap and diagonal seat belt and no air bag.

APPROVED SEAT BELT TYPES:

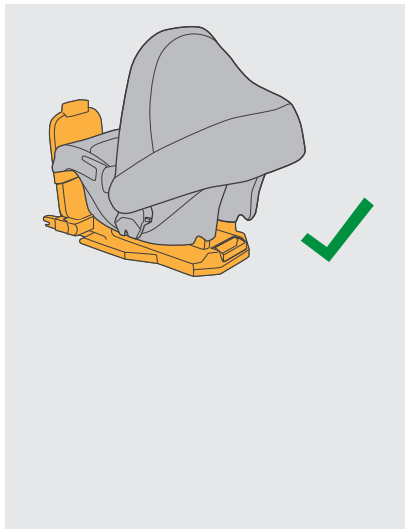
Your child seat must only be installed rear facing using a lap and diagonal seat belt in the rear passenger seat of the car.

The car seat is only suitable if the vehicle is fitted with 3-point static or 3-point retractor safety belt, approved to UN/ECE Regulation No. 16 or other equivalent standards.

✓	On outer rear seat	YES
⚠	On centre rear seat with 3-point belt	YES
✗	On a rearward-facing seat	NO
✗	On seats facing sideways	NO
✗	On rear seat with lapbelt only	NO
⚠	Front seat with airbag off	YES

Do not use on a passenger seat with a front airbag.



**Danger!**

In an accident enormous forces occur.

Never try to secure a child on your lap with the vehicle seat belt or by holding onto them. Secure your child in the car seat for every journey!

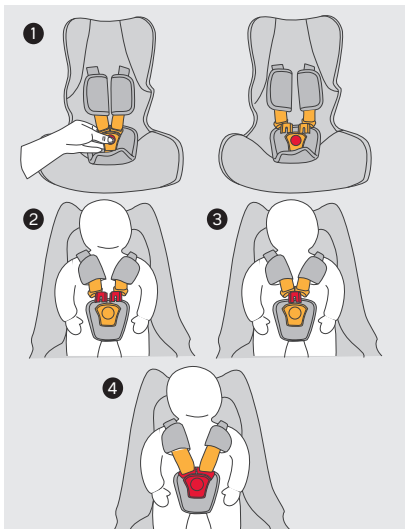
Always secure the child seat in a rear-facing position in the vehicle.

Danger! An airbag hitting the baby seat can cause serious injuries or death to the child occupant.

DO NOT use on a passenger seat with a front airbag! For seats with side airbags, please observe the instructions in your vehicle owner's manual.



Instructions



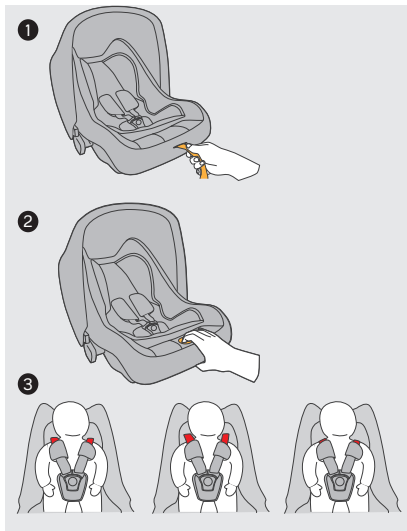
1. Open the harness buckle (press the red release button).
2. Place your child into the child seat. Put the shoulder straps over the child's shoulders.
4. Slot together the two plastic sections of the buckle connectors.
5. Slide the two connectors into the slot in the top of the buckle until they "click" into place.

Caution!

- Ensure the two buckle tongues are together and engaged in the harness buckle with an audible CLICK!CLICK!
- Always check that the harness is correctly engaged by pulling above and below the buckle and ensuring that the connectors do not come free from the harness.

Caution!

- Do not twist or interchange the shoulder straps.
- Tighten the straps until they are in contact with the child's body.
- The hip belt must lie as low as possible over the child's hips.
- The straps of the child safety seat must be close to the body without constricting the child.
- The shoulder straps must be adjusted correctly.
- The straps must not be twisted.
- The tongue from the adult seatbelt must be correctly engaged in its corresponding seat belt buckle.



The harness should be adjusted as tightly as possible without causing discomfort to the child. A loose harness is dangerous and should be checked each time that you use the seat.

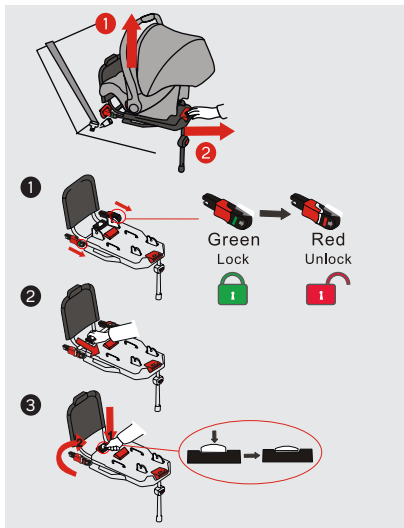
1. To tighten the harness pull down on the adjustment strap until the harness is appropriately firm.

Caution!

- Pull on the adjustment straps until the harness lies flat against the child's body.
- There should never be more than one finger's width of space between the shoulder straps and the child's shoulders.

2. The harness is loosened by pulling on both straps at the same time and pressing down on the harness adjuster that is located beneath the embroidered word "Press" on the cover.

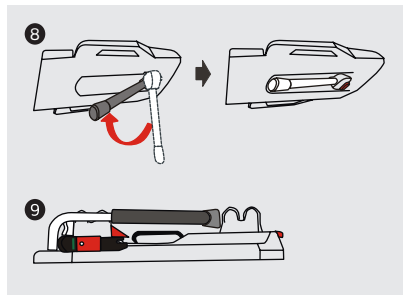
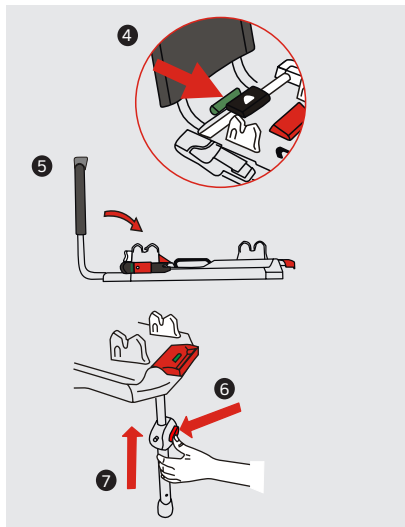
3. The harness has 2 positions. The straps should go into the slots at the height of the child's shoulders, or the nearest slots above. To adjust the harness remove each strap by passing it through the slots from the front to the back of the seat. Re-route the straps through the appropriate slots. If the shoulder height is not ok, please re-install the seat.



Remove the child seat from the Isofix base: first move the child seat carry handle to the upright position (1). Locate the red pull handle on the front edge of the Isofix base and pull outwards (2). Lift the child seat up and away from the base.

Remove the Isofix base:

- 1 Pull back on the black plastic covers of the Isofix connectors, revealing red (NOT green) in the small indicator windows on the sides of the connectors. The connectors are now separated from the car's anchor points.
- 2 Retract the connectors into the base by pulling back on the bar that connects the left and right connectors.
- 3 Press the small white button in the middle of that connector bar and rotate the connectors forward, back onto the base.



- 4** Press the Green Button on the Isofix base, to release the Roll Bar. Lay bar flat **5**.
- 6** Press the red button on the support leg and retract it **7**.
- 8** Place the support leg into the underside of the Isofix base.
- 9** Store Isofix base flat.



use only original mountain buggy car seat adapters to secure capsule to a buggy.



This child seat can be used as a travel system in conjunction with selected strollers only.

Installing:

Having attached an appropriate car seat adapter (sold separately) to your stroller, position the child seat on the car seat adapter so that the seat's attachment points on both sides are aligned with the car seat adapter. Press down on the child seat until you hear each side "click" into place, signalling that the child seat is locked to the car seat adapter. Ensure that the child seat is fully attached by pulling the child seat up and forward; it should not come free from the car seat adapter.

Removing the child seat:

Red release levers are located on both sides of the child seat, immediately above the connector points (as shown). Lift up on both levers then lift the child seat off the stroller using the carry handle.



© Phil and Teds Most Excellent Buggy Company Ltd 2012.

We (Phil and Teds Most Excellent Buggy Company Ltd) own the intellectual property rights in our brands, designs and inventions featured in this publication. These include, without limitation, the phil&teds, adapt&survive!, &, INLINE trade marks and INLINE DOUBLE BUGGY shape. We actively pursue people who infringe our intellectual property.

©Phil & Teds Most Excellent Buggy Company Ltd 2012.

Nous (Phil and Teds Most Excellent Buggy Company Ltd) sommes détenteurs de tous les droits de propriété intellectuelle associés à nos marques, modèles et inventions mentionnés dans le présent document. Ceux-ci incluent, sans que cela soit limitatif, les marques commerciales phil&teds, adapt&survive !, &, et INLINE et la forme du INLINE DOUBLE BUGGY. Nous engageons des poursuites contre tous ceux qui enfreignent nos droits de notre propriété intellectuelle.

© Phil and Teds Most Excellent Buggy Company Ltd 2012.

Wir (Phil and Teds Most Excellent Buggy Company Ltd) sind Eigentümer aller geistigen Eigentumsrechte bezüglich unserer in dieser Veröffentlichung aufgeführten Marken, Designs und Erfindungen. Diese schließen die Marken phil&teds, adapt&survive!, &, und INLINE sowie die Form INLINE DOUBLE BUGGY ohne Einschränkungen ein. Personen, die unsere Eigentumsrechte verletzen, werden von uns aktiv verfolgt.

© Phil and Teds Most Excellent Buggy Company Ltd 2012.

Nos pertenecen a nosotros (Phil and Teds Most Excellent Buggy Company Ltd) los derechos de propiedad intelectual de nuestras marcas, diseños e inventos mostrados en la presente publicación. Se incluyen, sin limitarse a, las marcas phil&teds, adapt&survive!, &, e INLINE la forma de INLINE DOUBLE BUGGY. Iniciaremos acciones legales contra aquéllos que violen nuestra propiedad intelectual.

© Phil and Teds Most Excellent Buggy Company Ltd 2012.

Wij (Phil and Teds Most Excellent Buggy Company Ltd) bezitten de intellectuele eigendomsrechten op onze merken, ontwerpen en uitvindingen die in deze publicatie worden vermeld. Dit zijn, zonder beperking, de handelsmerken phil&teds, adapt&survive!, &, INLINE en de INLINE DOUBLE BUGGY-vorm. We dienen daadwerkelijk een aanklacht in tegen degenen die inbreuk maken op ons intellectueel eigendomsrecht.

AU/NZ

✉ Mountain Buggy Australasia
102-112 Daniell Street
Newtown, Wellington 6021
New Zealand / Nouvelle-Zélande.
☎ + 64 4 3800 833

EUR

✉ Mountain Buggy Europe
Klavermaten 37C
7472 DD Hof van Twente (Goor)
NETHERLANDS / Pays-Bas.
☎ + 31 (0) 547 352 727

USA/CAN

✉ Mountain Buggy USA
221 Jefferson Street
Fort Collins, CO 80524
USA.
☎ 1 800 916 8442

FRA

✉ Mountain Buggy France
15 rue Gertrude Bell
56000 Vannes
FRANCE.
☎ + 33 (0) 2 97 44 88 26
@ france@mountainbuggy.com

Designed in New Zealand. Made in China
Conçu en Nouvelle-Zélande. Fabriqué en Chine
Conforme aux exigences de sécurité

AU/NZ

✉ phil&teds
102-112 Daniell Street
Newtown, Wellington 6021
New Zealand / Nouvelle-Zélande.
☎ + 64 4 3800 833

EUR

✉ phil&teds Europe BV
Klavermaten 37C
7472 DD Hof van Twente (Goor)
NETHERLANDS / Pays-Bas.
☎ + 31 (0) 547 352 727

USA/CAN

✉ phil&teds USA Inc
221 Jefferson Street
Fort Collins, CO 80524
USA.
☎ 1 800 839 4985

FRA

✉ phil&teds France
15 rue Gertrude Bell
56000 Vannes
FRANCE.
☎ + 33 (0) 2 97 44 88 26
@ france@philandteds.com

Designed in New Zealand. Made in China
Conçu en Nouvelle-Zélande. Fabriqué en Chine
Conforme aux exigences de sécurité