



Baron Pellet 500

494051

COOKING SYSTEM

- 800 sq. in. total cooking surface
- 560 sq. in. primary cooking surface
- Reversible heavy duty cast iron cooking grids
- 2 electronic meat probes
- Equipped with a powerful 2.0 RPM motor and durable auger

DESIGN AND STYLING

- Agitator and ash cleanout system
- Large diameter stainless steel lid handle with soft touch grip
- 18 lbs hopper capacity with sealed hopper cleanout
- WiFi and bluetooth enabled digital interface with enhanced PID temperature control
- Integrated bottle opener
- 8" wheels and 2 heavy duty leg levellers

DURABILITY

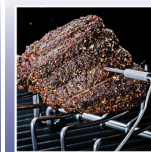
- Quality 1000°F high heat paint - Dragon Black
- Grill body constructed from 1.5 mm thick steel

WARRANTY

- 5 years on steel cookbox
- 2 years on remaining parts and paint



Heavy Duty
Cast Iron
Cooking Grids



Electronic
Meat Probes



Burn Pot
Agitator



Digital Control
Display with
Smart-Touch System



Large Crack-Proof
Wheels

UPC: 062703940519