

LED PROFILES

Nano Line

NANO

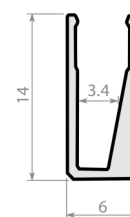


Small linear LED extrusion with an IP67 rated encapsulation that meets wet environment requirements such as showers, bathrooms and swimming pools. The Nano Line can be surface mounted or recessed and is walk-over safe, producing an indirect light.

Light source: LED Ribbon (Sold separately)

Dimensions mm: H14 x W6

Accessories: End Cap [EC]



ALU Pinstripe

ALUP



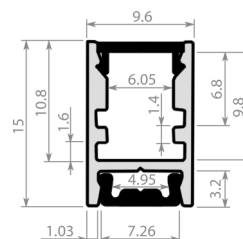
Ultra thin profile for a pinstriped effect, incorporating a click-in base for recessed or surface mount installation.

Light source: LED Ribbon (Sold separately)

Dimensions mm: H15 x W9.6

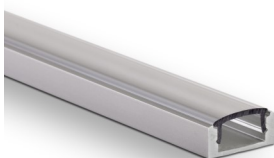
Diffuser: Opal [O] | Clear [C]

Accessories: End cap [EC] | End Cap with Cable Entry [ECH] | Installation Base [IB] | Aluminum End Cap [AEC] | Aluminum End Cap with Cable Hole [AECH]



Slim-Line 7

SL7



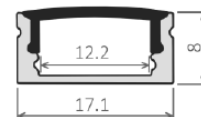
Low profile LED extrusion with a polycarbonate diffuser for surface mount or recessed application.

Light source: LED Ribbon (Sold separately)

Dimensions mm: H8 x W17.1

Diffuser: Opal [O] | Clear [C] | Ice [I] 30° Clear Lens [30C] | 30° Ice Lens [30I] | 60° Clear Lens [60C] | 60° Ice Lens [60I]

Accessories: End Cap [EC] | End Cap with Cable Entry [ECH] | Mounting Bracket [MB] | Aluminum End Cap [AEC] | Aluminum End Cap with Cable Hole [AECH] | Aluminum End Cap for 30° Lens [AEC30] | Aluminum End Cap for 60° Lens [AECH60]



Slim-Line 7 Recessed

SL7R



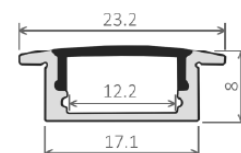
Low profile recessed LED extrusion with a polycarbonate diffuser.

Light source: LED Ribbon (Sold separately)

Dimensions mm: H8 x W17.1 (Including flange 23.2)

Diffuser: Opal [O] | Clear [C] | Ice [I]

Accessories: End cap [EC] | End Cap with Cable Entry [ECH] | Aluminum End Cap [AEC] | Aluminum End Cap with Cable Hole [AECH]



Slim-Line Wide 8

SLW8



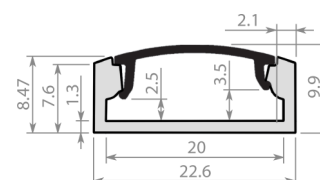
LED profile with a polycarbonate diffuser for surface mount or recessed application. Suitable for wider LED strips or running two strips side-by-side for extra light output.

Light source: LED Ribbon (Sold separately)

Dimensions mm: H8.47 x W22.6

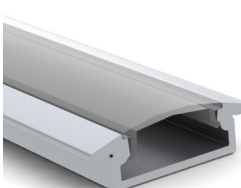
Diffuser: Opal [O] | Clear [C]

Accessories: End cap [EC] | End cap with cable entry [ECH] | Mounting Bracket [MB] | Aluminum End Cap [AEC] | Aluminum End Cap with Cable Hole [AECH]



Slim-Line Wide 8 Recessed

SLW8R



LED profile with a polycarbonate diffuser for recessed application. Suitable for wider LED strips or running two strips side-by-side for extra light output.

Light source: LED Ribbon (Sold separately)

Dimensions mm: H8.47 x W22.6 (Including flange 29.6)

Diffuser: Opal [O] | Clear [C] | Ice [I]

Accessories: End cap [EC] | End cap with cable entry [ECH] | Aluminum End Cap [AEC] | Aluminum End Cap with Cable Hole [AECH]

