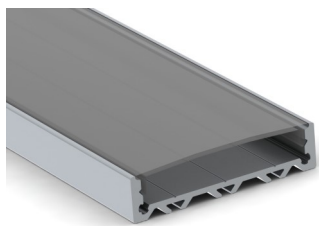


LED PROFILES

Slim-Line 10

SL10



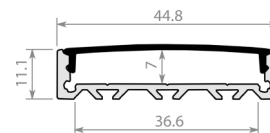
Super wide LED profile with room for multiple rows of LED ribbon.

Light source: LED Ribbon (Sold separately)

Dimensions mm: H11.1 x W44.8

Diffuser: Opal [O] | Clear [C] | Ice [I]

Accessories: Aluminum End Cap [AEC] | Aluminium End Cap with Cable Entry [AECH]



Slim-Line 15

SL15



Low profile LED extrusion with a polycarbonate diffuser for surface mount or recessed application.

Light source: LED Ribbon (Sold separately)

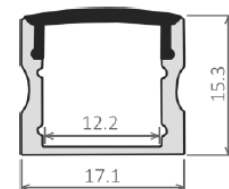
Dimensions mm: H15.3 x W17.1

Diffuser: Opal [O] | Clear [C] | Ice [I] | 30° Clear Lens [30C] | 30° Ice Lens [30I] | 60° Clear Lens [60C] | 60° Ice Lens [60I]

Accessories: End cap [EC] | End cap with cable entry [ECH] | Mounting bracket [MB] |

Aluminum End Cap [AEC] | Aluminum End Cap with Cable Hole [AECH] |

Aluminum End Cap for 30° Lens [AEC30] | Aluminum End Cap for 60° Lens [AECH60]



Slim-Line 15 Recessed

SL15R



Low profile recessed LED extrusion with a polycarbonate diffuser.

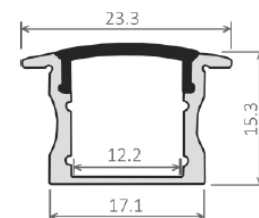
Light source: LED Ribbon (Sold separately)

Dimensions mm: H15.3 x W17.1 (Including flange 23.3)

Diffuser: Opal [O] | Clear [C] | Ice [I]

Accessories: End cap [EC] | End cap with cable entry [ECH] | Aluminum End Cap [AEC] |

Aluminum End Cap with Cable Hole [AECH]



Slim-Line Wide 15

SLW15



LED deep profile with a polycarbonate diffuser for surface mount or recessed application.

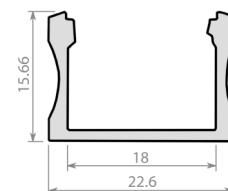
Suitable for wider LED strips or running two strips side-by-side for extra light output.

Light source: LED Ribbon (Sold separately)

Dimensions mm: H15.6 x W22.6

Diffuser: Opal [O] | Clear [C]

Accessories: End Cap [EC] | End Cap with Cable Entry [ECH] | Mounting Bracket [MB]



Slim-Line 20

SL20



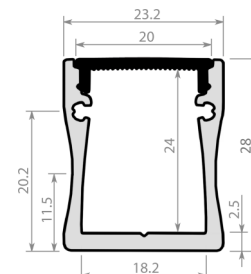
LED profile with a polycarbonate diffuser.

Light source: LED Ribbon (Sold separately)

Dimensions mm: H28 x W23.20

Diffuser: Opal [O] | Clear [C]

Accessories: Mounting Bracket [MB]



Slim-Line 20 Recessed

SL20R



LED recessed profile with a polycarbonate diffuser.

Light source: LED Ribbon (Sold separately)

Dimensions mm: H28 x W23.20 (Including flange 34.2)

Diffuser: Opal [O] | Clear [C]

Accessories: Aluminum End Cap [AEC] | Aluminum End Cap with Cable Hole [AECH]

