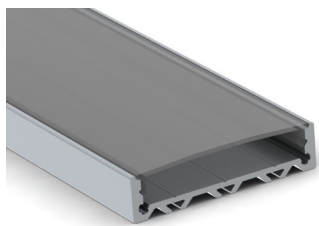


## LED PROFILES

## Slim-Line 10

SL10



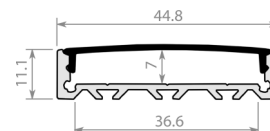
Super wide LED profile with room for multiple rows of LED ribbon.

**Light source:** LED Ribbon (Sold separately)

**Dimensions mm:** H11.1 x W44.8

**Diffuser:** Opal [O] | Clear [C] | Ice [I]

**Accessories:** Aluminum End Cap [AEC] | Aluminium End Cap with Cable Entry [AECH]



## Slim-Line 15

SL15



Low profile LED extrusion with a polycarbonate diffuser for surface mount or recessed application.

**Light source:** LED Ribbon (Sold separately)

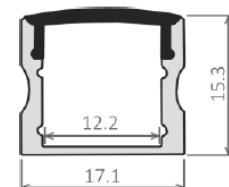
**Dimensions mm:** H15.3 x W17.1

**Diffuser:** Opal [O] | Clear [C] | Ice [I] | 30° Clear Lens [30C] | 30° Ice Lens [30I] | 60° Clear Lens [60C] | 60° Ice Lens [60I]

**Accessories:** End cap [EC] | End cap with cable entry [ECH] | Mounting bracket [MB] |

Aluminum End Cap [AEC] | Aluminum End Cap with Cable Hole [AECH] |

Aluminum End Cap for 30° Lens [AEC30] | Aluminum End Cap for 60° Lens [AECH60]



## Slim-Line 15 Recessed

SL15R



Low profile recessed LED extrusion with a polycarbonate diffuser.

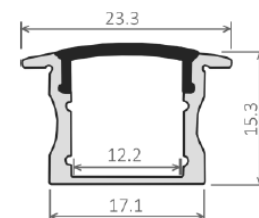
**Light source:** LED Ribbon (Sold separately)

**Dimensions mm:** H15.3 x W17.1 (Including flange 23.3)

**Diffuser:** Opal [O] | Clear [C] | Ice [I]

**Accessories:** End cap [EC] | End cap with cable entry [ECH] | Aluminum End Cap [AEC] |

Aluminum End Cap with Cable Hole [AECH]



## Slim-Line Wide 15

SLW15



LED deep profile with a polycarbonate diffuser for surface mount or recessed application.

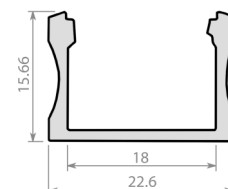
Suitable for wider LED strips or running two strips side-by-side for extra light output.

**Light source:** LED Ribbon (Sold separately)

**Dimensions mm:** H15.6 x W22.6

**Diffuser:** Opal [O] | Clear [C]

**Accessories:** End Cap [EC] | End Cap with Cable Entry [ECH] | Mounting Bracket [MB]



## Slim-Line 20

SL20



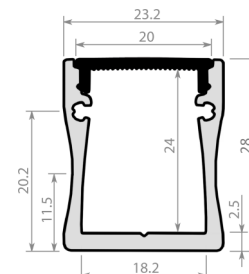
LED profile with a polycarbonate diffuser.

**Light source:** LED Ribbon (Sold separately)

**Dimensions mm:** H28 x W23.20

**Diffuser:** Opal [O] | Clear [C]

**Accessories:** Mounting Bracket [MB]



## Slim-Line 20 Recessed

SL20R



LED recessed profile with a polycarbonate diffuser.

**Light source:** LED Ribbon (Sold separately)

**Dimensions mm:** H28 x W23.20 (Including flange 34.2)

**Diffuser:** Opal [O] | Clear [C]

**Accessories:** Aluminum End Cap [AEC] | Aluminum End Cap with Cable Hole [AECH]

