

# Shading with Pastel Pencils



## Making your mark, and blending

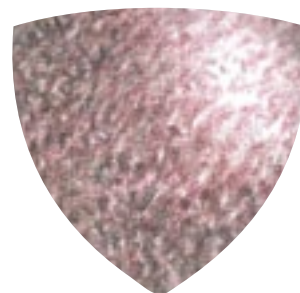
Use varied lines with subtle shifts in width and darkness for a more interesting sketch. Control takes some practice, but experimenting with grades and holding the pencil at different angles will allow you to create a variety of marks.



Hatching:  
Gray



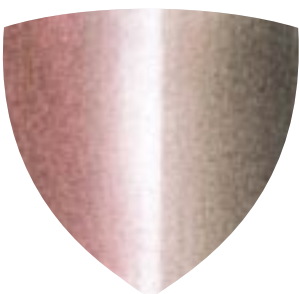
Cross Hatching:  
Sepia/Red Brown



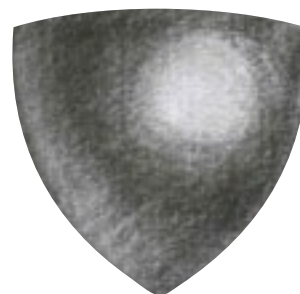
Stippling: Red Brown/  
Sepia/Gray/Black



Paper Blender:  
Red Brown

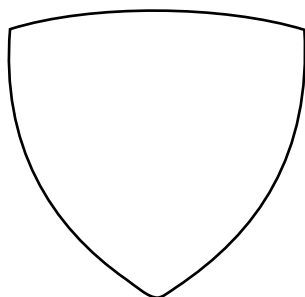


Twin Tip Blender:  
Red Brown/Sepia/Black

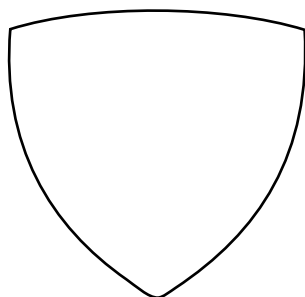


Kneadable Eraser removal  
technique: Black

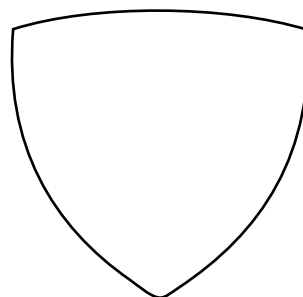
## Try it yourself



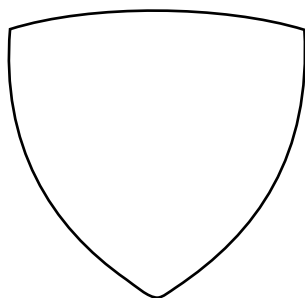
Hatching:  
Gray



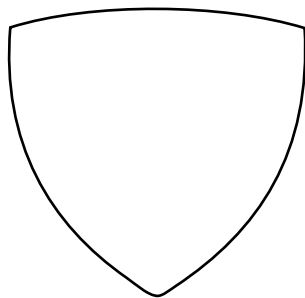
Cross Hatching:  
Sepia/Red Brown



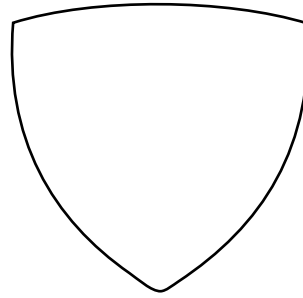
Stippling: Red Brown/  
Sepia/Gray/Black



Paper Blender:  
Red Brown



Twin Tip Blender:  
Red Brown/Sepia/Black



Kneadable Eraser removal  
technique: Black