



At the Heart of Creativity

How to colour in your Valentine Truffle Heart Surprise in 5 easy stages

castlearts.co.uk castlearts.com #castlearts

STAGE 1

To create this gorgeous confectionery treat, we begin with an outline drawing, adding layers to gradually build up colour and tone.



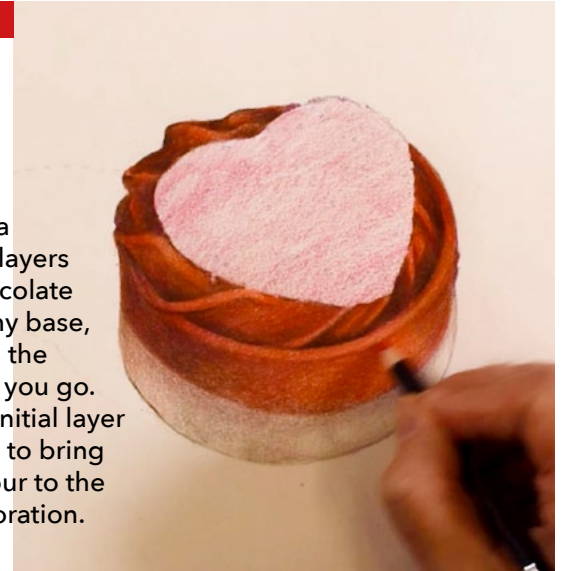
STAGE 2

First provide a base of colour with a soft layer of various browns for the main chocolate section. Start adding a little shade for definition.



STAGE 3

Next add a few more layers to the chocolate and creamy base, increasing the density as you go. Apply an initial layer of soft red to bring some colour to the heart decoration.



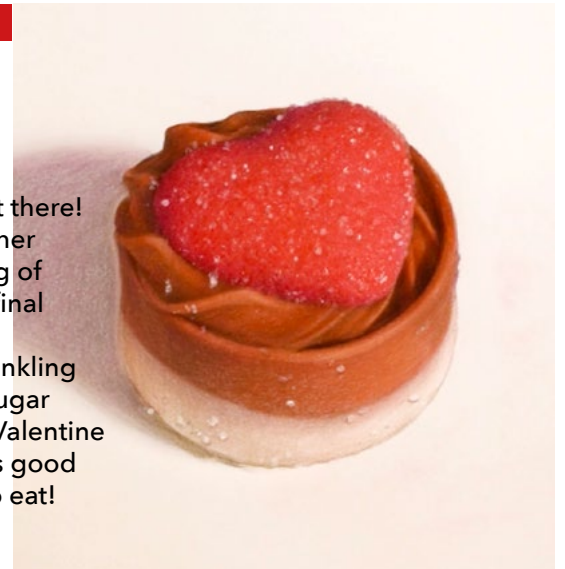
STAGE 4

Starting to look tempting, now it's time to build up the colours and tones while intensifying the shade and shadow with darker browns and a touch of black.

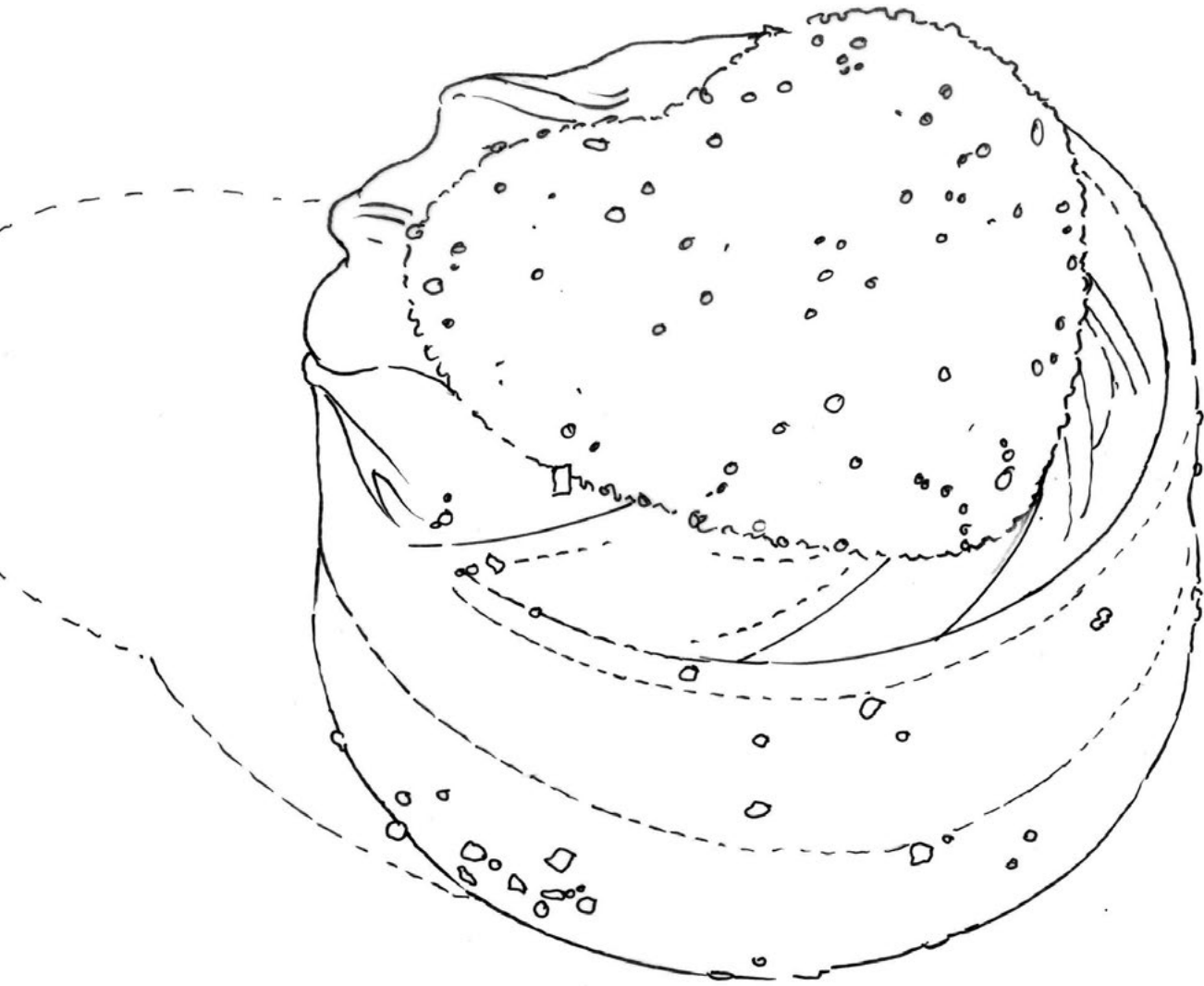


STAGE 5

Just about there! Some further deepening of tone and final highlights with a sprinkling of white sugar and your Valentine treat looks good enough to eat!



At the
Heart
of Creativity



 *At the
Heart
of Creativity*

Your Valentine Truffle Heart Surprise colour reference

