

## LED PROFILES



## Power-Line 30

PL30

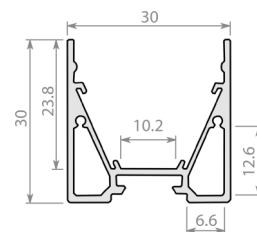
LED profile with a polycarbonate diffuser for surface mount application. Two parallel hollow spaces can be used as a cable channel and incorporates an integrated reflector due to the angle of the inner walls.

**Light source:** LED Ribbon (Sold separately)

**Dimensions mm:** H30 x W30

**Diffuser:** Opal [O] | Clear [C]

**Accessories:** End Cap [EC] | End Caps with screw-less visible surface [ECS] | Reflector Tape [RT] | 90° Profile Connector [90PC] | Suspension 1500 x 2 [S152] | Suspension 1500 x 4 [S154]



## Power-Line 30 Recessed

PL30R

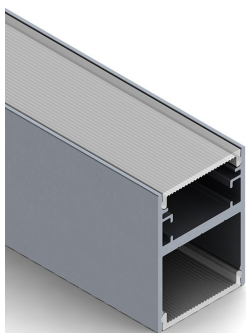
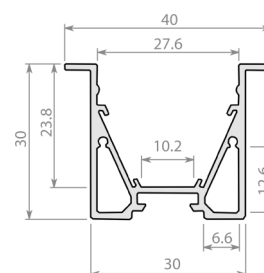
LED profile with a polycarbonate diffuser for recessed application. Two parallel hollow spaces can be used as a cable channel and incorporates an integrated reflector due to the angle of the inner walls.

**Light source:** LED Ribbon (Sold separately)

**Dimensions mm:** H30 x W30 (Including flange 40)

**Diffuser:** Opal [O] | Clear [C]

**Accessories:** End Cap [EC] | Reflector Tape [RT] | 90° Profile Connector [90PC]



## Power-Line 30H

PL30H

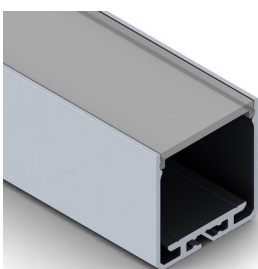
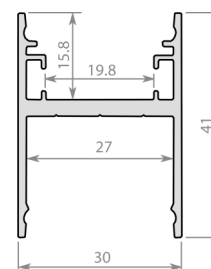
A double-sided LED profile where the light is directed up and down, for suspended or surface mount application.

**Light source:** LED Ribbon (Sold separately)

**Dimensions mm:** H41 x W30

**Diffuser:** Opal [O]

**Accessories:** End Cap [EC]



## Slim-Line 35

SL35

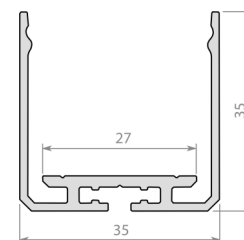
LED profile with a polycarbonate diffuser for surface or suspended application.

**Light source:** LED Ribbon (Sold separately)

**Dimensions mm:** H41 x W30

**Diffuser:** Opal [O]

**Accessories:** End Cap [EC]



## U Rectangular

UREC

LED profile with polycarbonate diffuser.

Especially suitable for LED Strip with high lumen and heat output.

**Light source:** LED Ribbon (Sold separately)

**Dimensions mm:** H44 x W40

**Diffuser:** Opal [O] | Clear [C]

**Accessories:** Aluminum End Cap [AEC] | Rear Mounting Cord System [RMCS] | Mounting Profile [MP] | Rope Suspension with ceiling attachment [SCA]

