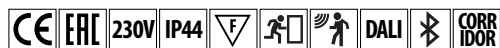
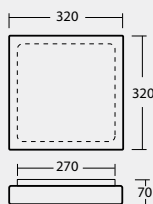


320x320 mm



NEW



Montura kovová  
 Stínidlo třívrstvé opálové sklo s matovaným povrchem  
 Držení stínidla sklápovací držáky  
 Montáž na stěnu nebo na strop

Fixture metal  
 Shade three-layer glass with matt surface  
 Shade attachment with folding two-step clamp holders  
 Light mounting on the ceiling or on the wall

Náhradní stínidlo  
spare shade

kód / code typ / type

20112 232

## STANDARD IP44

| kód code | typ type     | zdroj source | příkon input [W] | objímka socket | se senzorem with sensor kód / code | stmívatelné DALI DIM DALI kód / code |
|----------|--------------|--------------|------------------|----------------|------------------------------------|--------------------------------------|
| 55311    | IN-22NU2/232 |              | 2x40             | 2xE27          | 55312                              |                                      |
| 55313    | E-26NU2/232  |              | 2x26             | 2xG24q3        |                                    |                                      |

## LED IP44

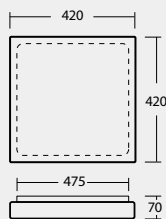
| kód code   | typ type                     | příkon input [W] | světelný tok LED luminous flux LED [lm] | světelný tok svítidla luminous flux of luminaire [lm] | se senzorem with sensor kód / code | stmívatelné DALI DIM DALI kód / code | corridor function DALI + sensor kód / code | 2 okruhy 2 circuits kód / code |
|--|------------------------------|------------------|---|---|------------------------------------|--------------------------------------|--|--------------------------------|
| <b>3000K</b>   |                              |                  |   |   |                                    |                                      |  |                                |
| 59105  | LED-1L32C07NU2/232 3000      | 19               | 2460                                    | 1670  | 59106                              | 59107                                | 59108                                      |                                |
| 59109  | LED-1L32B07NU2/232 3000      | 25               | 3230                                    | 2200  | 59110                              | 59111                                | 59112                                      | 59113*                         |
| <b>NOUZOVÉ KOMBINOVANÉ / EMERGENCY COMBINED – 3H</b> |                              |                  |   |   |                                    |                                      |  |                                |
| 59114  | LED-1L32C07NU2/232/NK1W 3000 | 19               | 2460                                    | 1670  | 59115                              |                                      |  |                                |
| 59116  | LED-1L32B07NU2/232/NK1W 3000 | 25               | 3230                                    | 2200  | 59117                              |                                      |  |                                |
| <b>4000K</b>   |                              |                  |   |   |                                    |                                      |  |                                |
| 59605  | LED-1L32C07NU2/232 4000      | 19               | 2590                                    | 1760  | 59606                              | 59607                                | 59608                                      |                                |
| 59609  | LED-1L32B07NU2/232 4000      | 25               | 3380                                    | 2300  | 59610                              | 59611                                | 59612                                      | 59613*                         |
| <b>NOUZOVÉ KOMBINOVANÉ / EMERGENCY COMBINED – 3H</b> |                              |                  |   |   |                                    |                                      |  |                                |
| 59614  | LED-1L32C07NU2/232/NK1W 4000 | 19               | 2590                                    | 1760  | 59615                              |                                      |  |                                |
| 59616  | LED-1L32B07NU2/232/NK1W 4000 | 25               | 3380                                    | 2300  | 59617                              |                                      |  |                                |

\*3000K - 1940+1290lm

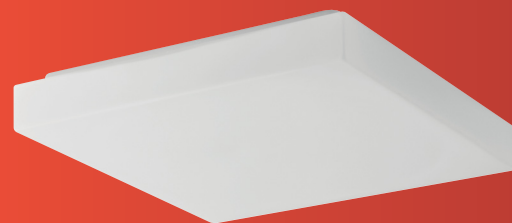
\*4000K - 2030+1350lm

Montura kovová  
 Stínidlo třívrstvé opálové sklo s matovaným povrchem  
 Držení stínidla sklápovací držáky  
 Montáž na stěnu nebo na strop

Fixture metal  
 Shade three-layer glass with matt surface  
 Shade attachment with folding two-step clamp holders  
 Light mounting on the ceiling or on the wall



NEW



Náhradní stínidlo  
 spare shade

| kód / code | typ / type |
|------------|------------|
| 20113      | 233        |

### STANDARD IP44

| kód code | typ type        | zdroj source | příkon input [W] | objímka socket | se senzorem with sensor kód / code | stmívatelné DALI DIM DALI kód / code |
|----------|-----------------|--------------|------------------|----------------|------------------------------------|--------------------------------------|
| 55314    | IN-32NU3/233    |              | 3x40             | 3xE27          | 55315                              |                                      |
| 55316    | E-26NU3/233 32W |              | 2x32             | 2xGX24q3       |                                    |                                      |

### LED IP44

| kód code   | typ type                     | příkon input [W] | světelný tok LED luminous flux LED [lm] | světelný tok svítidla luminous flux of luminaire [lm] | se senzorem with sensor kód / code | stmívatelné DALI DIM DALI kód / code | corridor function DALI + sensor kód / code | 2 okruhy 2 circuits kód / code |
|--|------------------------------|------------------|---|---|------------------------------------|--------------------------------------|--|--------------------------------|
| <b>3000K</b>   |                              |                  |   |   |                                    |                                      |  |                                |
| 59118  | LED-1L33C10NU3/233 3000      | 28               | 3690                                    | 2320  | 59119                              | 59120                                | 59121                                      |                                |
| 59122  | LED-1L33B07NU3/233 3000      | 36               | 4850                                    | 3060  | 59123                              | 59124                                | 59125                                      | 59126*                         |
| <b>NOUZOVÉ KOMBINOVANÉ / EMERGENCY COMBINED – 3H</b> |                              |                  |   |   |                                    |                                      |  |                                |
| 59127  | LED-1L33C10NU3/233/NK1W 3000 | 28               | 3690                                    | 2320  |                                    |                                      |  |                                |
| 59128  | LED-1L33B07NU3/233/NK1W 3000 | 36               | 4850                                    | 3060  |                                    |                                      |  |                                |
| <b>4000K</b>   |                              |                  |   |   |                                    |                                      |  |                                |
| 59618  | LED-1L33C10NU3/233 4000      | 28               | 3890                                    | 2650  | 59619                              | 59620                                | 59621                                      |                                |
| 59622  | LED-1L33B07NU3/233 4000      | 36               | 5070                                    | 3450  | 59623                              | 59624                                | 59625                                      | 59626*                         |
| <b>NOUZOVÉ KOMBINOVANÉ / EMERGENCY COMBINED – 3H</b> |                              |                  |   |   |                                    |                                      |  |                                |
| 59627  | LED-1L33C10NU3/233/NK1W 4000 | 28               | 3890                                    | 2650  |                                    |                                      |  |                                |
| 59628  | LED-1L33B07NU3/233/NK1W 4000 | 36               | 5070                                    | 3450  |                                    |                                      |  |                                |

\*3000K - 2700+2150lm

\*4000K - 3040+2030lm