

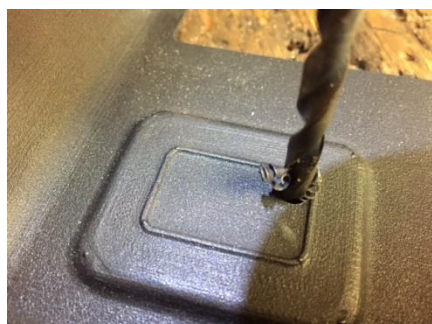
The MUD Half-Door Trim has been designed to fit the two-piece/split Series style doors found on the Series II/IIa/III and some Defender 90/110 models, e.g. military, North American Specification 90.

The MUD Half-Door Trim has been designed to accommodate both the early Series Handles and the later anti-burst handles. You can identify the two different types of door handles below by their respective latches.



There is a small amount of trimming required to the plastic trims before they will fit the doors.

On the 'anti-burst' style handles, you will need to trim the area of the trims around the lock & handle mechanisms. Removing the rectangular area indicated on the back of the trim will accommodate the lock mechanism. To do this, drill a hole in each corner, then remove the material with a Dremel style tool, jig-saw, pad-saw or similar.



Removing the area around the handle opening, indicated in yellow in the picture below will provide clearance for the anti-burst door handle mechanism. The range of movement between handles varies greatly.

We recomend measuring 10mm inwards in the area indicated below and remove the material.



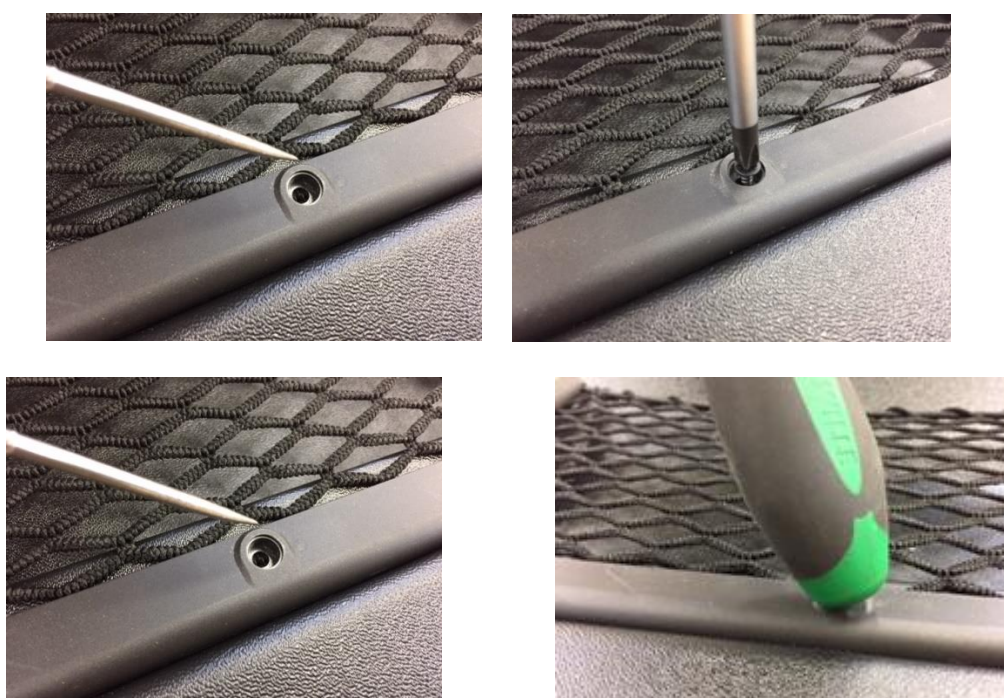
Once the lock and handle mechanisms moves freely through their full range of travel without interference, finish off the trimmed areas with a file to tidy any rough cut edges.



On the earlier Series handles with the push-and turn locks the only trimming required to the trim is to create a hole for the lock to protrude through the door panel. We recommend using a hole-saw with a minimum diameter of 27mm to clear the lock handle. Alternatively, remove the rectangular recess as described above for the anti-burst style handles.



Position the nets within the recess on the trims and use a 2.5mm drill or bradawl to create the net fixing holes. Fix the nets in place using the small self-tapping screws. Push the screw cap into place. Use the head of a screwdriver if the screw-caps are a tight fit.



To fix the trim to the door, drill through the pre-drilled holes around the outside of the trim into the door frame with a 5.5mm drill. Fix the trims in place on the doors using the fir-tree fasteners.



Drill the fixing holes for the handles into the rib that runs horizontally across the door with a 4mm drill. Fix the handles in place with the larger self-tapping screws. Fold over the screw caps and snap them into the place on the handles.



Before attaching the MUD logo badges, we recommend you rub the recessed area on the trim with an abrasive paper to create a good key for the adhesive on the logo.



www.mudstuff.co.uk